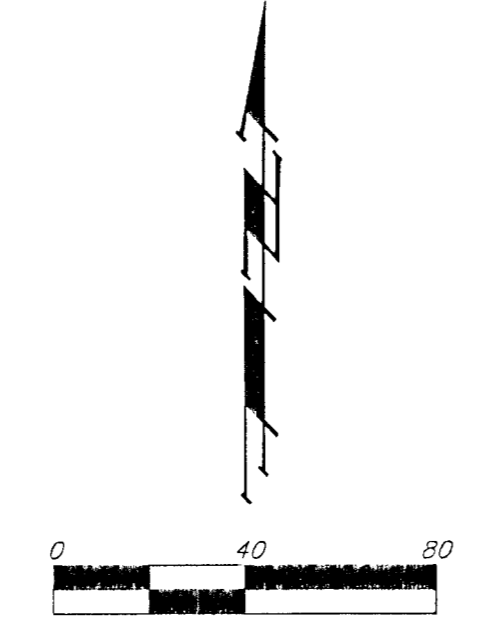
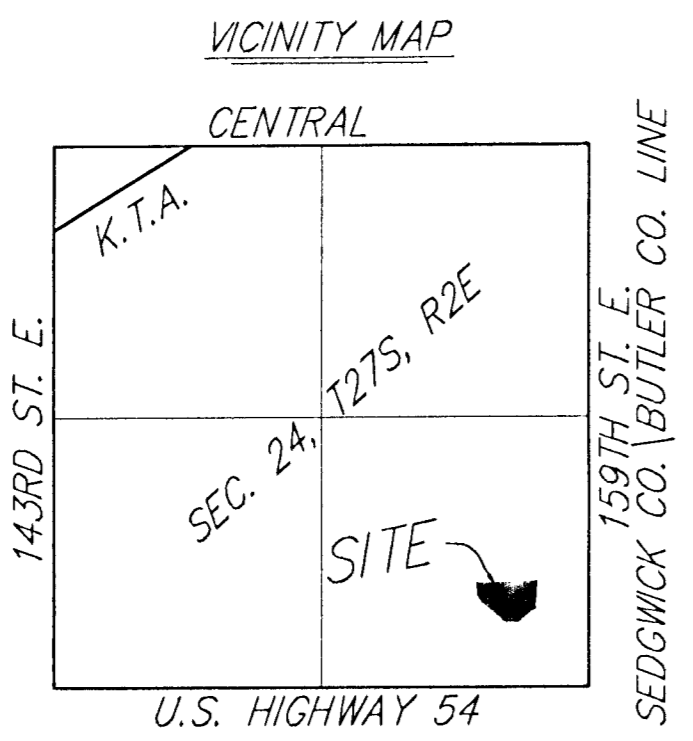
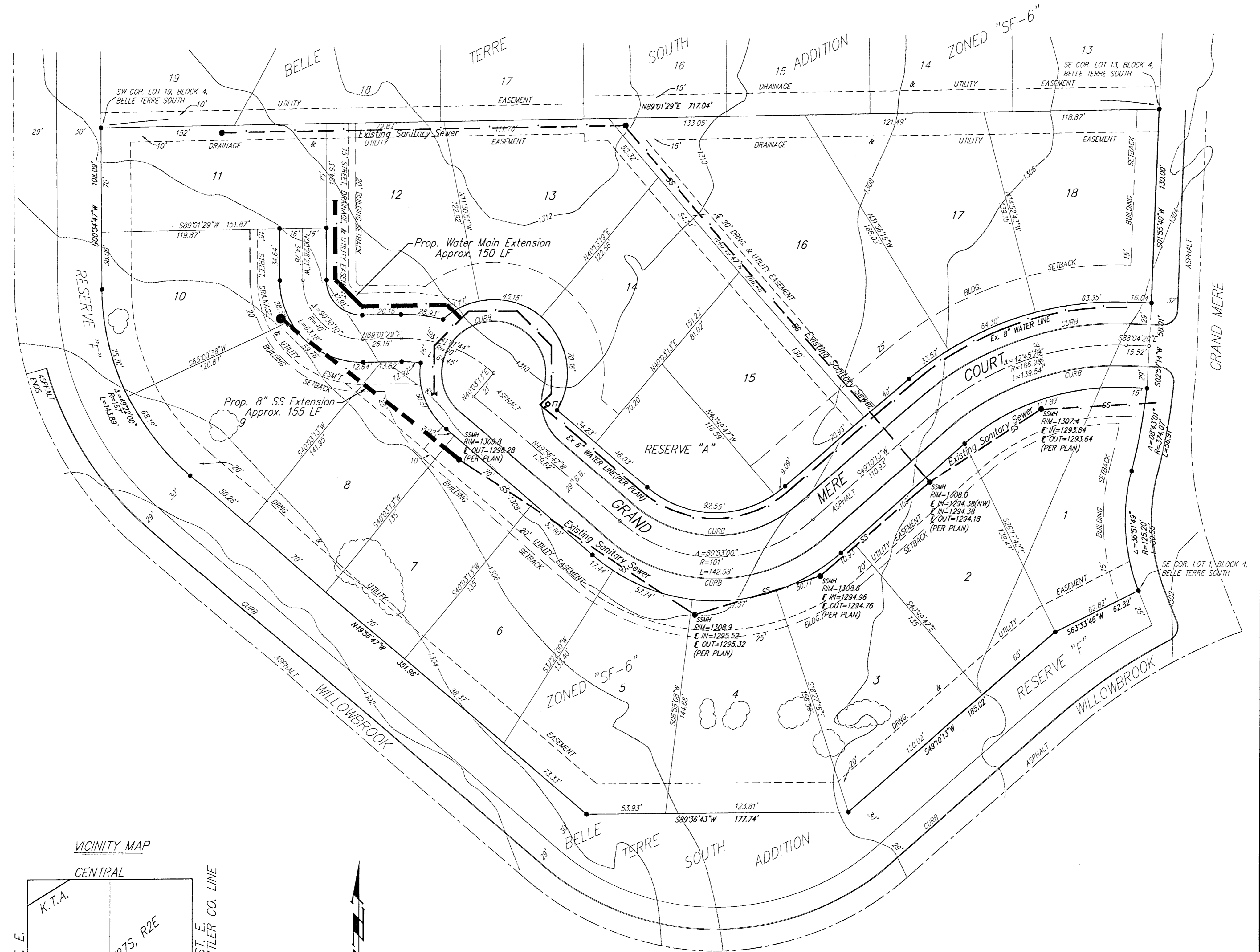


UTILITY PLAN

BELLE TERRE SOUTH 2ND

AN ADDITION TO SEDGWICK COUNTY, KANSAS

SCANNED



NOTE: SANITARY SEWER AND WATER LINE ARE PER PLAN.
DATE OF TOPOGRAPHY: 12 FEBRUARY 1999

BENCHMARK:
U.S.G.S. STANDARD TABLET 75' NORTH AND 42' EAST OF S.E. CORNER SEC. 24, AT U.S. HIGHWAY 54 AND 159TH STREET EAST.
ELEV=1301.83 M.S.L.

- = #4 REBAR W/ "BAUGHMAN" CAP (SET)
- (M) = MEASURED
- (P) = PLATTED
- SSMH ● = Sanitary Sewer Manhole
- FH ● = Fire Hydrant
- WV ● = Water Valve

4 July 1999

MD BAUGHMAN COMPANY P. A.
ENGINEERING, SURVEYING, & PLANNING
316-262-7271 • 316 ELLIS • WICHITA, KANSAS 67211
P: PLAN BELTSS22-DWG-0000