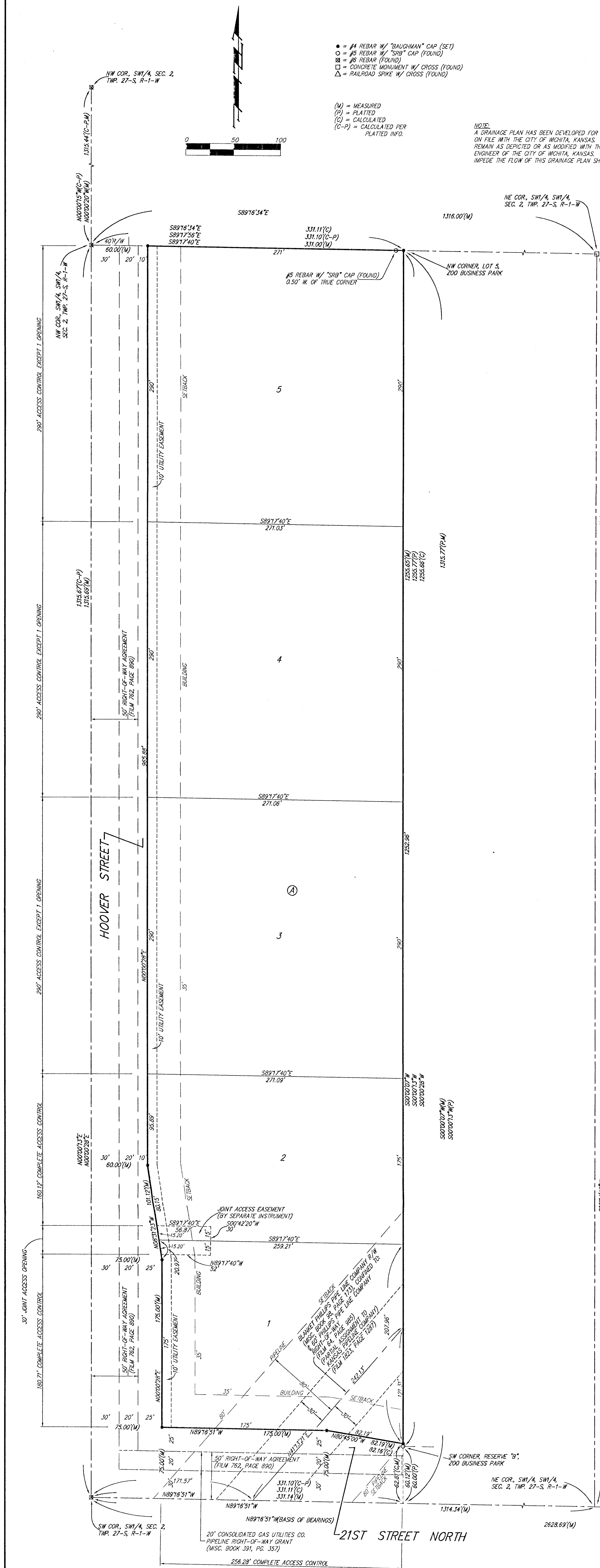


BURLESON ADDITION

WICHITA, SEDGWICK COUNTY, KANSAS



State of Kansas) SS
 Sedgwick County) We, *Baughman Company, P.A.*, Surveyors in
 of said county and state do hereby certify that we have surveyed and
 platted "BURLESON ADDITION", Wichita, Sedgwick County, Kansas and that
 the accompanying plat is a true and correct exhibit of the property
 surveyed, described as the west ten acres of the SW 1/4 of the SW 1/4
 of Sec. 2, Twp. 27-S, R-1-W of the 6th P.M., Sedgwick County, Kansas.
 Existing public easements and dedications
 being vacated by virtue of K.S.A. 12-512(b).
Baughman Company, P.A.

Michael G. Conroy, Surveyor
 Michael G. Conroy

Know all men by these presents that we,
 the undersigned, have caused the land in the surveyors certificate to be
 platted into Lots, a Block, and Streets, to be known as "BURLESON
 ADDITION", Wichita, Sedgwick County, Kansas. The utility easement is
 hereby granted as indicated for the construction and maintenance of all
 public utilities. The streets are hereby dedicated to and for the use of
 the public. All abutters rights of access to or from Hoover Street and
 to or from 21st Street North shall be as depicted on the face of the
 plat and are hereby granted to the City of Wichita, Kansas. The permitted
 opening locations shall be as determined by the City Engineer of the City
 of Wichita, Kansas.
Nu-Line Co., Inc., a Kansas corporation

James D. Burleson, President
 James D. Burleson

State of Kansas) SS
 Sedgwick County) The foregoing instrument acknowledged before
 me, this 23rd day of MAY, 2001, by James D. Burleson, President
 of *Nu-Line Co., Inc., a Kansas corporation*, on behalf of the corporation.

JUDITH M. TERHUNE
 Notary Public - State of Kansas
 My Appl. Expires 11-7-2001
Judith M. Terhune, Notary Public
 JUDITH M. TERHUNE

My App't. Exp. 11-7-2001

We the undersigned holders of a mortgage on the
 above described property, do hereby consent to this plat of "BURLESON
 ADDITION", Wichita, Sedgwick County, Kansas.
The Prairie State Bank

Carmen Campbell, VP
 CARMEN CAMPBELL

State of Kansas) SS
 Sedgwick County) The foregoing instrument acknowledged be-
 fore me, this 23 day of May, 2001, by CARMEN CAMPBELL,
 VP of *The Prairie State Bank*, on behalf of the bank.

JUANITA C. DANKERT
 Notary Public - State of Kansas
 My Appl. Expires 9/30/04
Juanita C. Dankert, Notary Public
 JUANITA C. DANKERT

My App't. Exp. 9-30-04

This plat of "BURLESON ADDITION", Wichita,
 Sedgwick County, Kansas has been submitted to and approved by the
 Wichita-Sedgwick County Metropolitan Area Planning Commission, Wichita,
 Kansas.
 Dated this _____ day of _____,
 Wichita-Sedgwick County Metropolitan Area Planning Commission

J. D. Michaelis, Acting Chair
 Marvin S. Krout, Secretary

This plat approved and all dedications
 shown hereon accepted by the City Council of the City of Wichita,
 Kansas, this _____ day of _____, 2001.
 At the direction of the City Council

Chris Cherches, City Manager
 Pat Burnett, City Clerk

Reviewed in accordance with K.S.A. 58-2005
 on this _____ day of _____, 2001.

Tricia L. Robello, L.S. #1246
 Deputy County Surveyor
 Sedgwick County, Kansas

Entered on transfer record this _____ day
 of _____, 2001.
 Don Brace, County Clerk

State of Kansas) SS
 Sedgwick County) This is to certify that this plat has been
 filed for record in the office of the Register of Deeds, this _____ day
 of _____, 2001 at _____ o'clock _____ M., and is duly recorded.

Bill Meek, Register of Deeds
 Linda Kizzire, Deputy