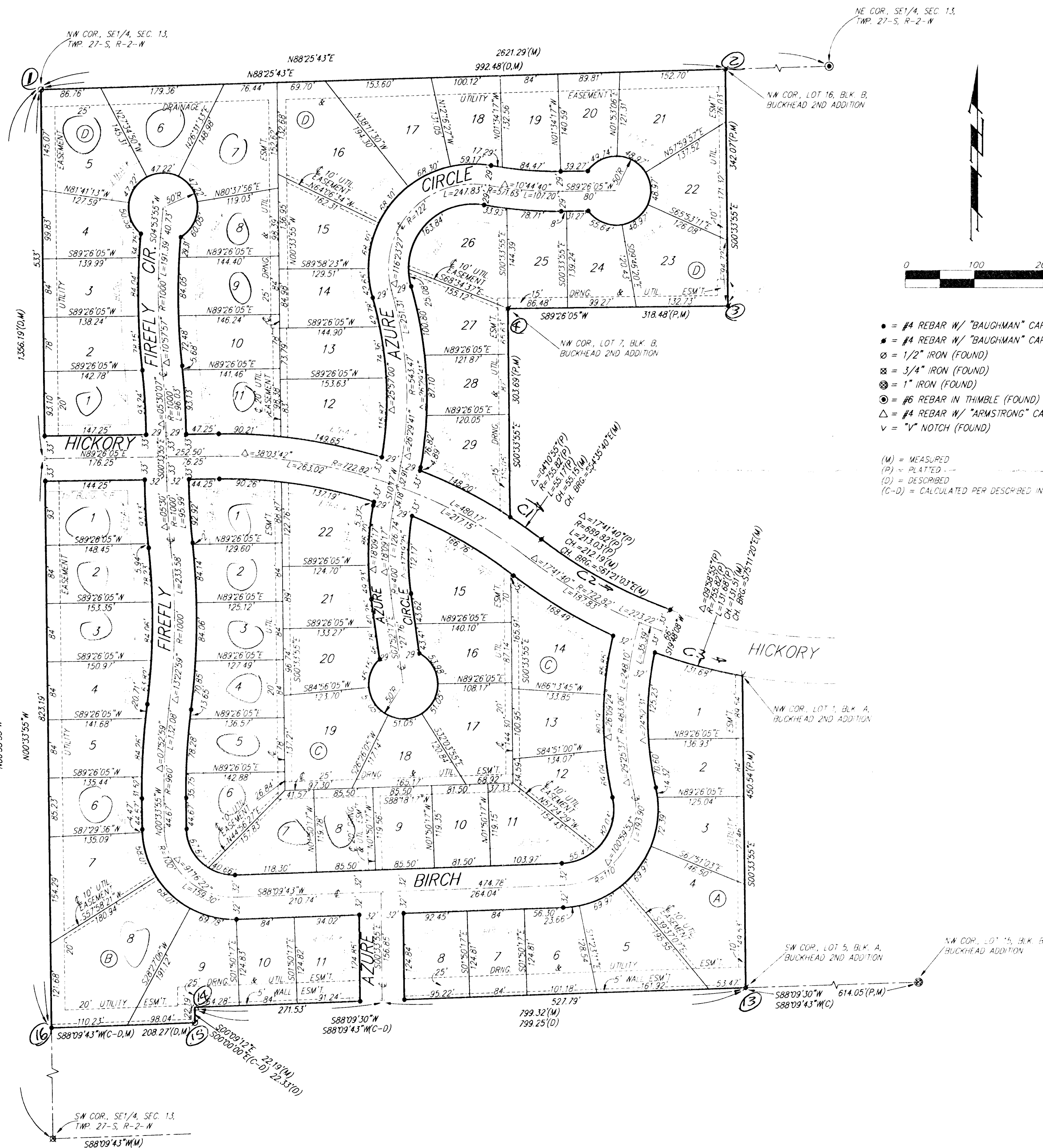


BUCKHEAD 3RD ADDITION

WICHITA, SEDGWICK COUNTY, KANSAS



- = #4 REBAR W/ "BAUGHMAN" CAP (SET)
- = #4 REBAR W/ "BAUGHMAN" CAP (FOUND)
- = 1/2" IRON (FOUND)
- ⊗ = 3/4" IRON (FOUND)
- ⊙ = 1" IRON (FOUND)
- ⊕ = #6 REBAR IN THIMBLE (FOUND)
- △ = #4 REBAR W/ "ARMSTRONG" CAP (FOUND)
- ∇ = "V" NOTCH (FOUND)

- (M) = MEASURED
- (P) = PLATTED
- (D) = DESCRIBED
- (C-D) = CALCULATED PER DESCRIBED INFO.

State of Kansas) SS We, Baughman Company, P.A., Surveyors in Sedgwick County) do hereby certify that we have surveyed and plotted "BUCKHEAD 3RD ADDITION", Wichita, Sedgwick County, Kansas and that the accompanying plat is a true and correct exhibit of the property surveyed, described as follows: Beginning at the SW corner of Lot 5, Block A, Buckhead 2nd Addition, Wichita, Sedgwick County, Kansas; thence west parallel with the south line of the SE1/4 of Sec. 13, Twp. 27-S, R-2-W of the 6th P.M., Sedgwick County, Kansas and 1,320 feet north of the south line of said SE1/4 as measured parallel with the east line of said SE1/4, 799.25 feet; thence south parallel with the east line of said SE1/4, 22.33 feet, more or less, to a point 1297 feet north of the south line of said SE1/4 as measured perpendicular to said south line; thence west parallel with the south line of said SE1/4, 208.27 feet, more or less, to a point on the west line of said SE1/4; thence north along the west line of said SE1/4, 1,356.19 feet, more or less, to the NW corner of said SE1/4; thence east along the north line of said SE1/4, 992.48 feet to the NW corner of Lot 16, Block B, in said Buckhead 2nd Addition; thence S00°33'55"E, 342.07 feet to the NE corner of Lot 8 in said Block B; thence S89°26'05"W, 318.48 feet to the NW corner of Lot 7 in said Block B; thence S00°33'55"E, 303.69 feet to the SW corner of Lot 5 in said Block B, said SW corner being on a curve to the right, thence southeasterly along said curve, having a central angle of 04°10'55" and a radius of 755.82 feet, an arc distance of 55.17 feet to the P.R.C. of a curve to the left; thence southeasterly along said curve, having a central angle of 17°41'40" and a radius of 689.82 feet, an arc distance of 213.03 feet to the NW corner of Hickory as platted in said Buckhead 2nd Addition; thence S19°48'08"W, 66 feet to the SW corner of said Hickory, said SW corner being on a curve to the left; thence southeasterly along said curve, having a central angle of 09°58'55" and a radius of 755.82 feet, an arc distance of 131.68 feet to the NW corner of Lot 1, Block A, in said Buckhead 2nd Addition; thence S00°33'55"E, 450.54 feet to the point of beginning.

Existing public easements and dedications being vacated by virtue of K.S.A. 12-512(b).

Baughman Company, P.A.

Michael G. Conroy 4-8-98, Surveyor
Michael G. Conroy

Know all men by these presents that we, the undersigned, have caused the land in the surveyors certificate to be platted into Lots, Blocks, and Streets, to be known as "BUCKHEAD 3RD ADDITION", Wichita, Sedgwick County, Kansas. The utility easements are hereby granted as indicated for the construction and maintenance of all public utilities. The wall easements are hereby granted as indicated for the construction and maintenance of a private wall and utility main lines and service lines shall be allowed to cross these easements. The drainage and utility easements are hereby granted as indicated for drainage purposes and for the construction and maintenance of all public utilities. The streets are hereby dedicated to and for the use of the public.

Kelsey Development, Inc.

Paul E. Kelsey, President
Paul E. Kelsey

State of Kansas) SS The foregoing instrument acknowledged before me, this 4th day of MAY, 1998, by Paul E. Kelsey, President of Kelsey Development, Inc., on behalf of the corporation.

Judith M. Terhune, Notary Public
JUDITH M. TERHUNE

My App't. Exp. 11-7-2001

We, the undersigned, holders of a mortgage on the above described property, do hereby consent to this plat of "BUCKHEAD 3RD ADDITION", Wichita, Sedgwick County, Kansas.

Prairie State Bank

Carmen Campbell, Vice-President
Carmen Campbell

State of Kansas) SS The foregoing instrument acknowledged before me, this 7th day of MAY, 1998, by Carmen Campbell, Vice-President of Prairie State Bank, on behalf of the bank.

Judith M. Terhune, Notary Public
JUDITH M. TERHUNE

My App't. Exp. 11-7-2001

This plat of "BUCKHEAD 3RD ADDITION", Wichita, Sedgwick County, Kansas has been submitted to and approved by the Wichita-Sedgwick County Metropolitan Area Planning Commission, Wichita, Kansas.
Dated this 4th day of MAY, 1998.
Wichita-Sedgwick County Metropolitan Area Planning Commission

Richard Lopez, Chairman

Marvin S. Krout, Secretary

This plat approved and all dedications shown hereon accepted by the City Council of the City of Wichita, Kansas, this 4th day of MAY, 1998.

Bob Knight, Mayor

Pat Burnett, City Clerk

Entered on transfer record this 4th day of MAY, 1998

James Alford, County Clerk

State of Kansas) SS This is to certify that this plat has been filed for record in the office of the Register of Deeds, this 7th day of MAY, 1998, at 10:00 o'clock A.M. and is duly recorded.

Register of Deeds

Deputy