

BEST SUPPLY ADDITION WICHITA, SEDGWICK COUNTY, KANSAS

State of Kansas) SS We, *Baughman Company, P.A.*, Surveyors in Sedgwick County) and state do hereby certify that we have surveyed and platted "BEST SUPPLY ADDITION", Wichita, Sedgwick County, Kansas and that the accompanying plat is a true and correct exhibit of the property surveyed, described as a tract in the S1/2 of the SW1/4 of the SW1/4 of Sec. 4, Twp. 27-S, R-1-E, of the 6th P.M., Sedgwick County, Kansas, further described as commencing at the SW corner thereof; thence east along the south line of the S1/2 of the SW1/4 of said SW1/4, 359.8 feet for a place of beginning; thence north with a deflection angle to the left of 89°40', 396.9 feet; thence east with a deflection angle to the right of 89°55', 239 feet; thence south with a deflection angle to the right of 90°05', 395.86 feet to a point on the south line of the S1/2 of the SW1/4 of said SW1/4; thence west, 239 feet to the place of beginning.

Existing easements and dedications being vacated by virtue of K.S.A. 12-512(b).

Baughman Company, P.A.

This plat of "BEST SUPPLY ADDITION", Wichita, Sedgwick County, Kansas has been submitted to and approved by the Wichita-Sedgwick County Metropolitan Area Planning Commission, Wichita, Kansas.

Dated this _____ day of _____, 2002.
Wichita-Sedgwick County Metropolitan Area Planning Commission

_____, Acting Chair
J. D. Michaels

_____, Secretary
Marvin S. Krout

This plat approved and all dedications shown hereon accepted by the City Council of the City of Wichita, Kansas, this _____ day of _____, 2002.

At the direction of the City Council

_____, City Manager
Chris Cherches

_____, City Clerk
Pat Burnett

Reviewed in accordance with K.S.A. 58-2005 on this _____ day of _____, 2002.

_____, Deputy County Surveyor
Tricia L. Robello, L.S. #1246
Sedgwick County, Kansas

Entered on transfer record this _____ day of _____, 2002.

_____, County Clerk
Don Brace

State of Kansas) SS The foregoing instrument acknowledged before me, this 9TH day of APRIL, 2002, by Paul Suhr, President, of Best Supply Company, Inc., on behalf of the corporation.

JUDITH M. TERHUNE
Notary Public - State of Kansas
My Appt. Expires 11-7-2005

Judith M. Terhune, Notary Public
JUDITH M. TERHUNE

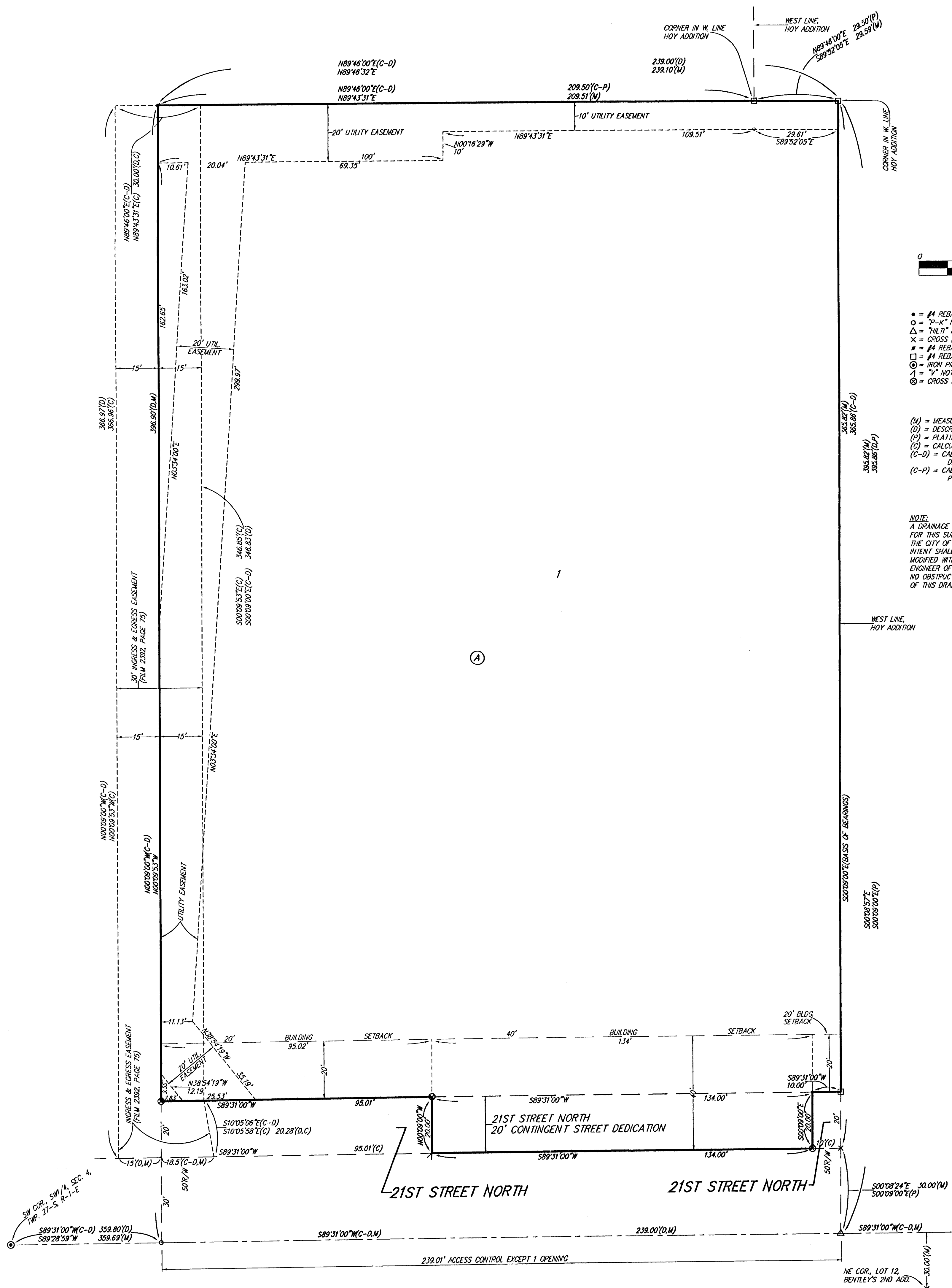
My App't. Exp. 11-7-2005

State of Kansas) SS This is to certify that this plat has been filed for record in the office of the Register of Deeds, this _____ day of _____, 2002 at _____ o'clock _____ M.; and is duly recorded.

_____, Register of Deeds
Bill Meek

_____, Deputy
Linda Kizzire

BAUGHMAN COMPANY P.A.
ENGINEERING, SURVEYING, & PLANNING
316-262-7271 • 315 ELLIS • WICHITA, KANSAS 67211
P:\PLAT\BEST SUPPLY ADD\DWG\BESTADD.DWG-MOC



- #4 REBAR W/ "BAUGHMAN" CAP (SET)
- "P" NAIL (FOUND)
- △ "HILT" NAIL (FOUND)
- × CROSS (FOUND)
- #4 REBAR (FOUND)
- #4 REBAR W/ "SOB" CAP (FOUND)
- ⊙ IRON PIN IN THIMBLE (FOUND)
- ∟ "Y" NOTCH (SET)
- ⊗ CROSS (SET)

- (M) = MEASURED
- (D) = DESCRIBED
- (P) = PLATTED
- (C) = CALCULATED
- (C-D) = CALCULATED PER DESCRIBED INFO.
- (C-P) = CALCULATED PER PLATTED INFO.

NOTE:
A DRAINAGE PLAN HAS BEEN DEVELOPED FOR THIS SUBDIVISION AND IS ON FILE WITH THE CITY OF WICHITA, KANSAS. DRAINAGE INTENT SHALL REMAIN AS DEPICTED OR AS MODIFIED WITH THE APPROVAL OF THE CITY ENGINEER OF THE CITY OF WICHITA, KANSAS. NO OBSTRUCTIONS WHICH IMPEDE THE FLOW OF THIS DRAINAGE PLAN SHALL BE ALLOWED.

NOTE:
CLAIM OF EASEMENT BY ARKANSAS LOUISIANA GAS COMPANY, INC., FILED IN MISC. BOOK 552, PAGE 144 AND DESIGNATED THEREIN AS R/W NO. 21710, OVER A PORTION OF THE SW1/4 OF SEC. 4, TWP. 27-S, R-1-E.

NOTE:
K.G.B.E. GUY AND ANCHOR EASEMENT, (MISC. BOOK 454, PAGE 161).