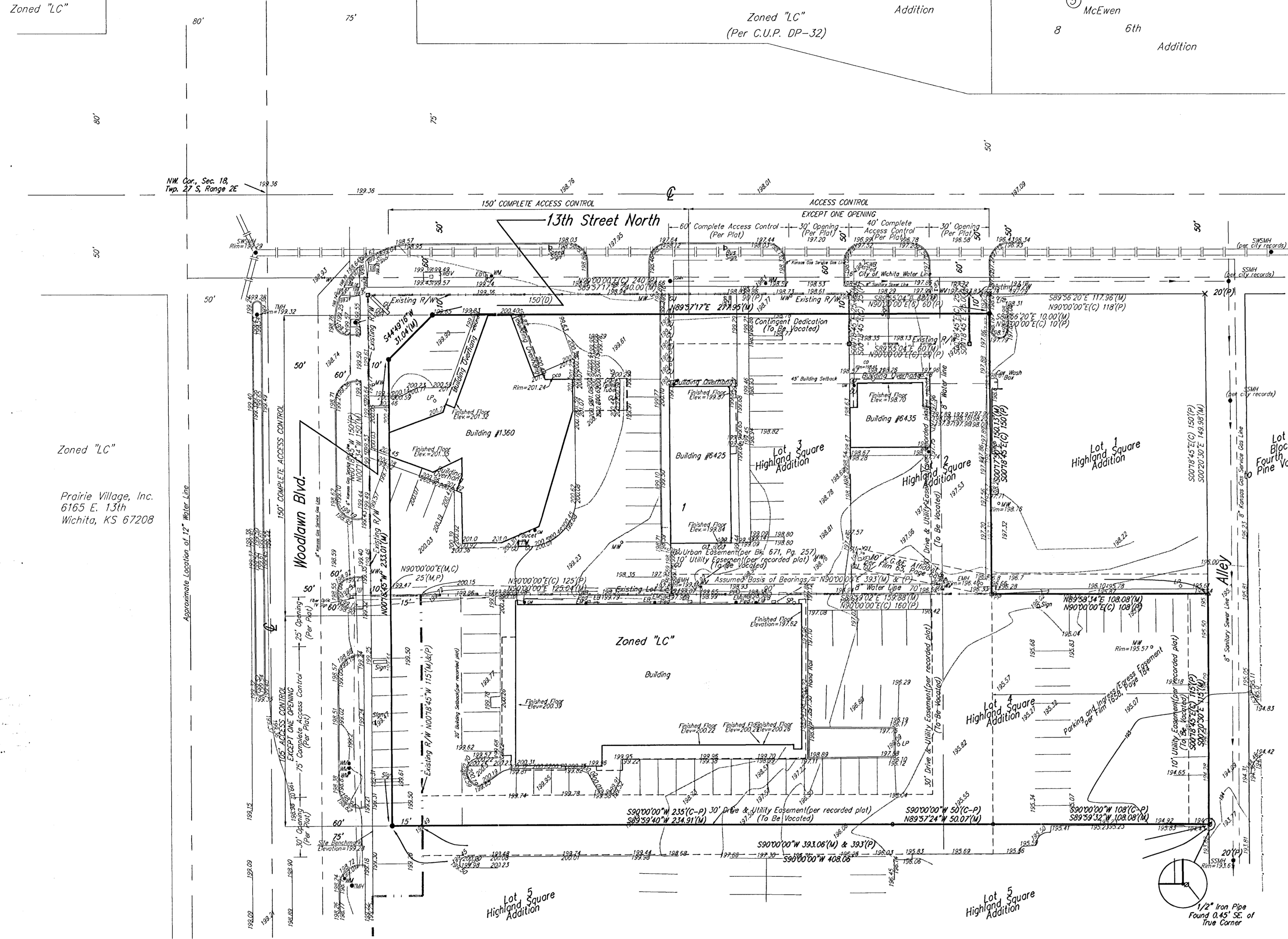


SCANNED PRELIMINARY PLAT
BENCOR ADDITION
WICHITA, SEDGWICK COUNTY, KANSAS

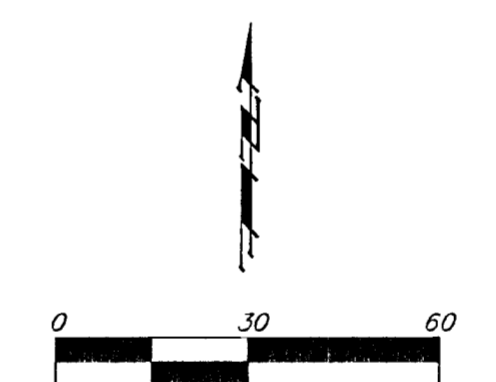
Replat of Spring Acres
 54
 Zoned "LC"



Zoned "LC"
 Prairie Village, Inc.
 6165 E. 13th
 Wichita, KS 67208

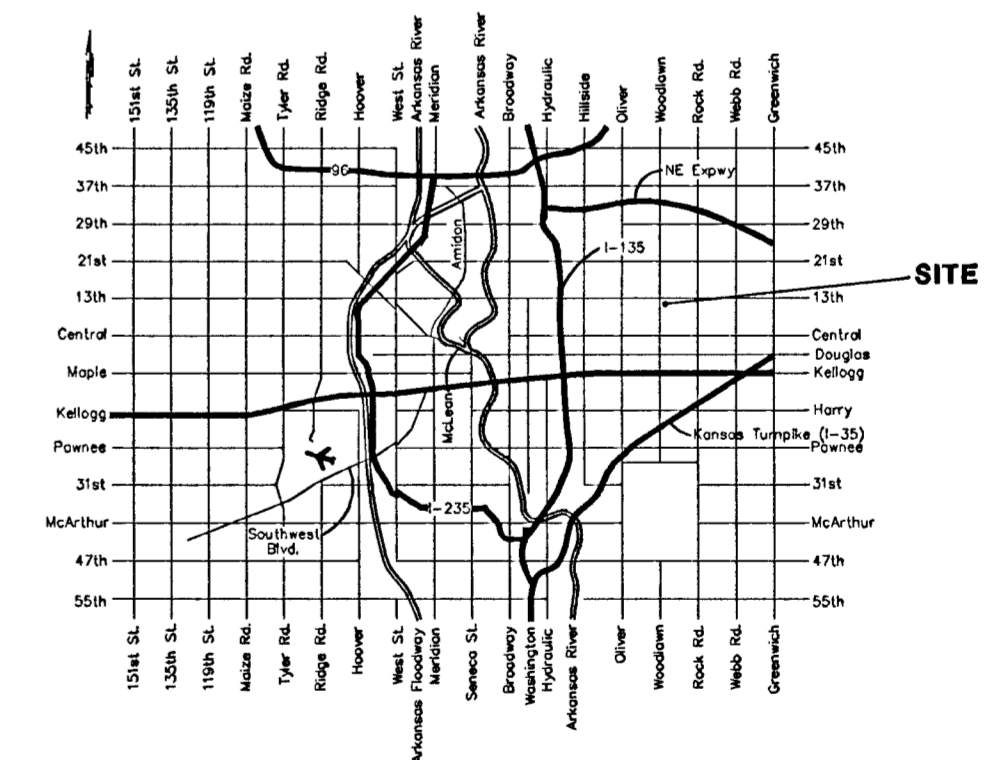
Contract Purchaser:
 Bencor Properties, L.L.C.
 Attn: Rex Morrison, P.E.
 90 S. Cascade Avenue
 Suite 330
 Colorado Springs, CO 80903

LEGAL DESCRIPTION:
 Lots 2, 3, and 4, Highland Square Addition, Wichita, Kansas, Sedgwick County, Kansas, Together with the north 150 feet of the west 150 feet of Lot 10, Block 3, Fourth Addition to Pine Valley Estates, Wichita, Kansas.



- = P.K. Nail Set
- = #4 Baughman Rebar Found
- = #4 Rebar Found
- △ = Chiseled V-Notch Found
- × = Chiseled Cross Found
- ⊗ = 1/2" Iron Pipe Found
- ⊕ = Chiseled Cross Set
- ⊠ = #4 Baughman Rebar Set

- CD = Cleanout
- EB = Electric Box
- EM = Electric Meter
- EMH = Electric Manhole
- ICV = Irrigation Control Valve - Valve Box
- CM = Gas Meter
- GU = Guard Post (Bollard)
- GA = Guy Anchor
- LP = Light Pole
- MW = Monitoring Well
- PP = Power Pole
- Sign = Sign
- Sign = Signal Pole
- SP = Stand Pipe
- SSMH = Sanitary Sewer Manhole
- SWB Ped = Southwestern Bell Pedestal
- SWBY = Southwestern Bell Vault
- SWSMH = Stormwater Sewer Manhole
- TB = Traffic Box
- TMH = Traffic Manhole
- WM = Water Meter
- WV = Water Valve
- XTMR = Transformer



SITE BENCHMARK: "□" in the south drive of subject property, on the back of walk, elevation = 199.28 (City Datum)