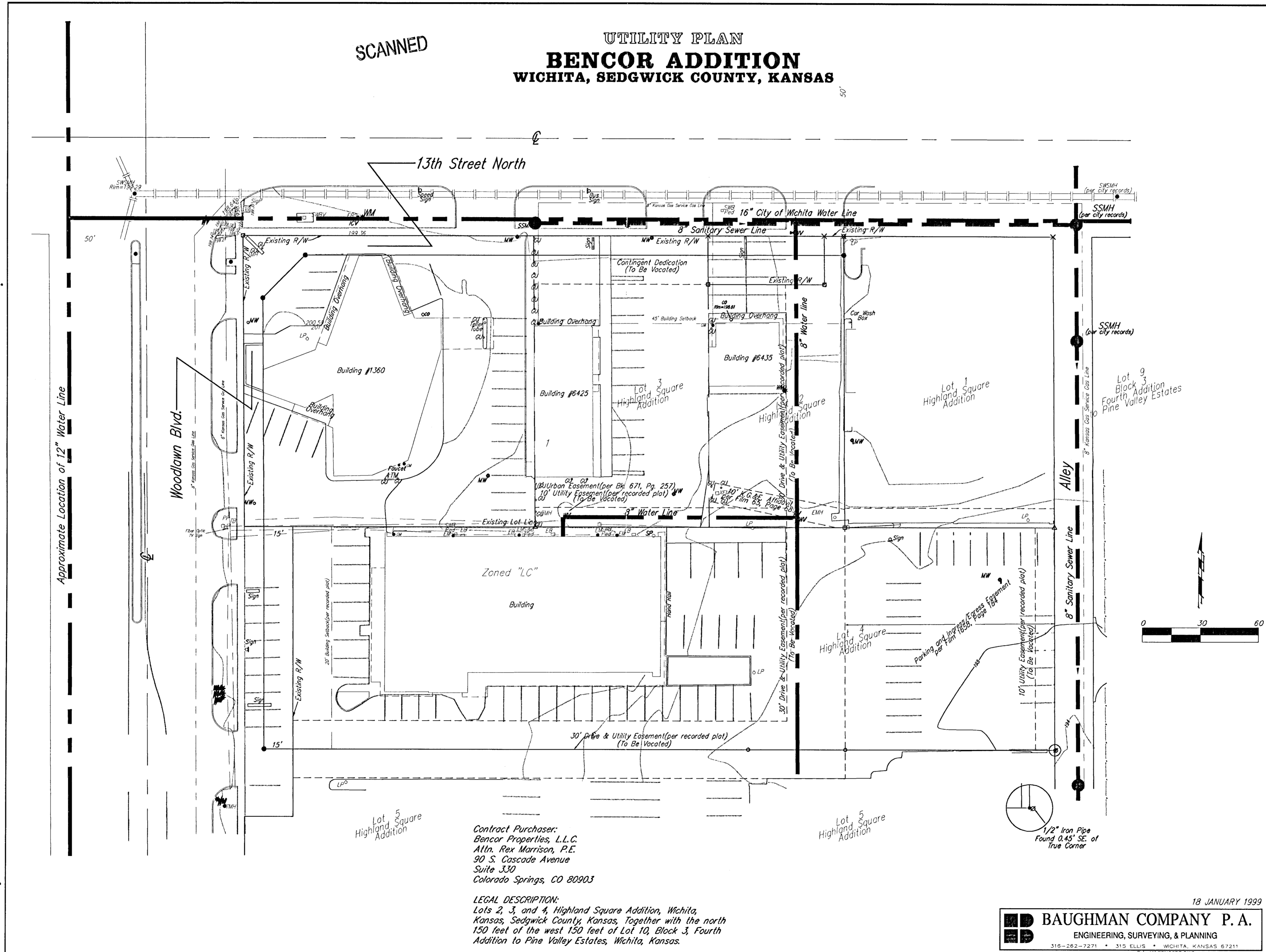


SCANNED

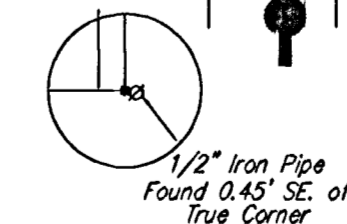
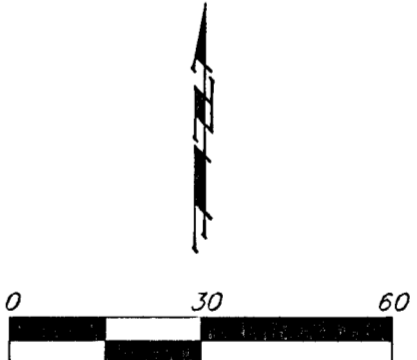
UTILITY PLAN BENCOR ADDITION WICHITA, SEDGWICK COUNTY, KANSAS

50'



Contract Purchaser:
 Bencor Properties, L.L.C.
 Attn. Rex Morrison, P.E.
 90 S. Cascade Avenue
 Suite 330
 Colorado Springs, CO 80903

LEGAL DESCRIPTION:
 Lots 2, 3, and 4, Highland Square Addition, Wichita,
 Kansas, Sedgwick County, Kansas, Together with the north
 150 feet of the west 150 feet of Lot 10, Block 3, Fourth
 Addition to Pine Valley Estates, Wichita, Kansas.



18 JANUARY 1999

BAUGHMAN COMPANY P. A.
 ENGINEERING, SURVEYING, & PLANNING

316-262-7271 • 315 ELLIS • WICHITA, KANSAS 67211
 F:\W2\BENCORP.DWG