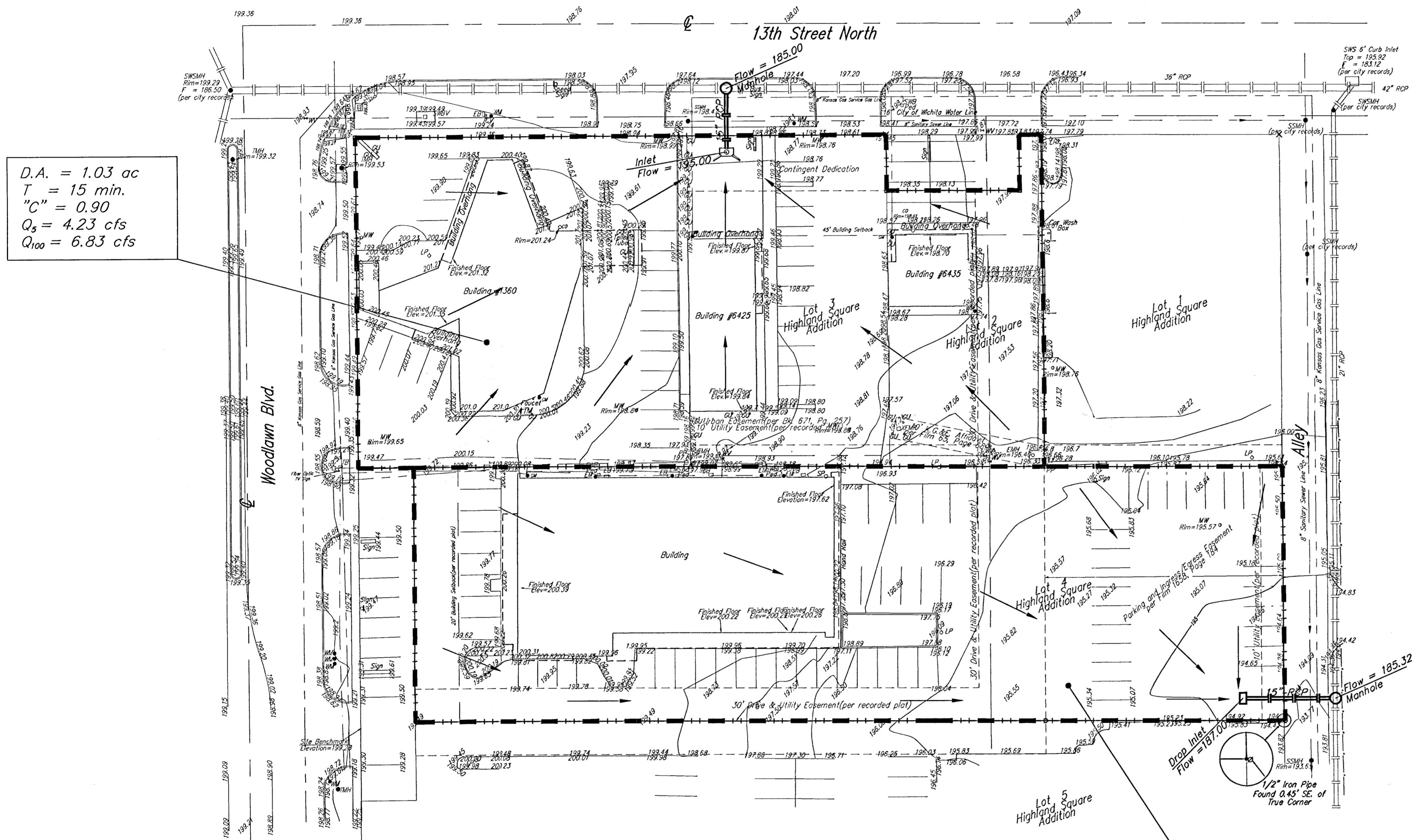


DRAINAGE CONCEPT

BENCOR ADDITION

WICHITA, SEDGWICK COUNTY, KANSAS

SCANNED



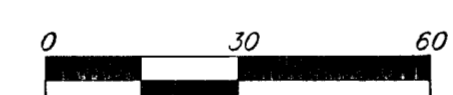
D.A. = 1.03 ac
 T = 15 min.
 "C" = 0.90
 Q₅ = 4.23 cfs
 Q₁₀₀ = 6.83 cfs

D.A. = 1.04 ac
 T = 15 min.
 "C" = 0.90
 Q₅ = 4.27 cfs
 Q₁₀₀ = 6.90 cfs

OWNER:
 BENCOR PROPERTIES, L.L.C.
 ATTN: REX MARRISON, P.E.
 90 S. CASCADE AVENUE
 SUITE 330
 COLORADO SPRINGS, CO 80903

LEGAL DESCRIPTION:
 Lots 2, 3, and 4, Highland Square Addition, Wicht

SITE BENCHMARK: "□" in the south drive of subject property, on the back of walk, elevation = 199.28(City Datum)



- = P.K. Nail Set
- = #4 Baughman Rebar Found
- = #4 Rebar Found
- △ = Chiseled V-Notch Found
- × = Chiseled Cross Found
- ⊗ = 1/2" Iron Pipe Found
- ⊘ = Chiseled Cross Set
- ⊠ = #4 Baughman Rebar Set

- CO = Cleanout
- EB = Electric Box
- EM = Electric Meter
- EMH = Electric Manhole
- ICV = Irrigation Control Valve - Valve Box
- GM = Gas Meter
- GU = Guard Post(Bollard)
- Guy = Guy Anchor
- LP = Light Pole
- MW = Monitoring Well
- PP = Power Pole
- Sign = Sign
- ⊠ Stp = Signal Pole
- SP = Stand Pipe
- SSMH = Sanitary Sewer Manhole
- SWB Pad = Southwestern Bell Pedestal
- SWBV = Southwestern Bell Vault
- SWSMH = Stormwater Sewer Manhole
- TB = Traffic Box
- TMH = Traffic Manhole
- WM = Water Meter
- WV = Water Valve
- XFMR = Transformer

