

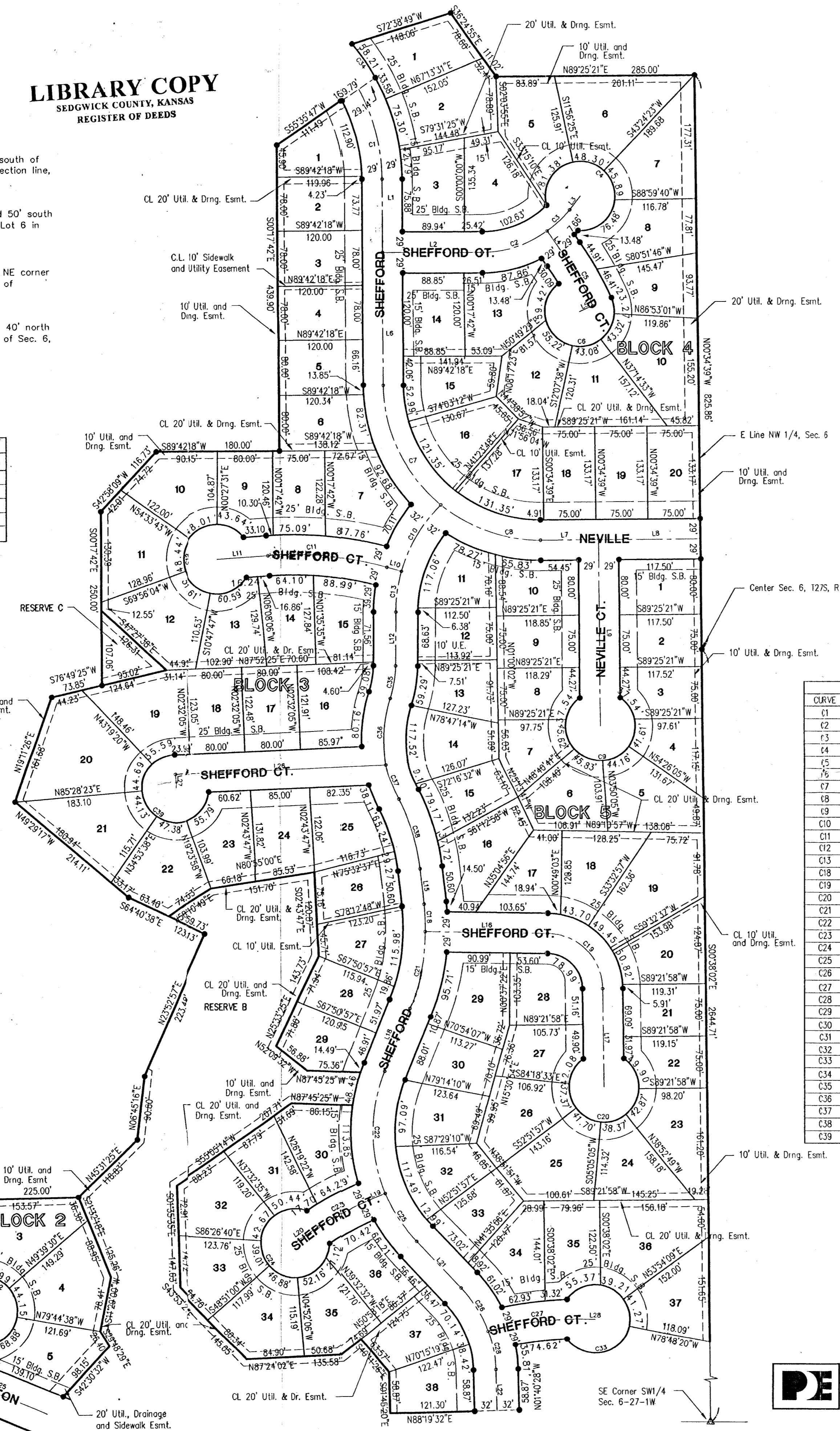
LIBRARY COPY  
SEDGWICK COUNTY, KANSAS  
REGISTER OF DEEDS

**Benchmarks**

- (City of Wichita Datum)
- 1. City of Wichita Benchmark disc, 67' south of centerline 21st St. & 79' south of section line, and 46' east of centerline 119th St. Elev. 172.08
- 2. 80d nail in power pole, 30' east and 50' south of Northwest Corner of Government Lot 6 in SW Quarter of Section 6, 127S, R1W. Elev. 179.98
- 3. 80d nail in power pole 50' south of NE corner of Government Lot 3 in NW Quarter of Section 6, 127S, R1W. Elev. 179.98
- 4. 80d nail in power pole 40' west and 40' north of the NW Corner of the NW Corner of Sec. 6, 127S, R1W. Elev. 175.05

| Lot No. | Block No. | Elevation | MSL Elevation |
|---------|-----------|-----------|---------------|
| 1 - 20  | 3         | 168.6     | 1358.00       |
| 21 - 34 | 3         | 165.6     | 1353.00       |
| 3 - 7   | 2         | 165.6     | 1353.00       |
| 8 - 23  | 2         | 165.4     | 1352.80       |
| 35 - 51 | 3         | 165.4     | 1352.80       |

Datum is City of Wichita or Mean Sea Level



| LINE | LENGTH  | BEARING   |
|------|---------|-----------|
| L1   | 104.88' | N001742°W |
| L2   | 144.36' | N894218°E |
| L3   | 24.67'  | S380404°W |
| L4   | 40.24'  | S354520°E |
| L5   | 21.00'  | S66723°W  |
| L6   | 191.06' | N001742°W |
| L7   | 83.42'  | S892521°W |
| L8   | 146.50' | S892521°W |
| L9   | 269.00' | N003439°W |
| L10  | 21.74'  | S142439°E |
| L11  | 73.83'  | S85345°W  |
| L12  | 76.15'  | S00000°W  |
| L13  | 50.60'  | S065324°E |
| L14  | 175.32' | S892238°E |
| L15  | 141.79' | N003802°W |
| L16  | 98.88'  | S229903°W |
| L17  | 26.05'  | S670814°W |
| L18  | 21.00'  | S023205°E |
| L19  | 8.69'   | S883052°E |

| CURVE | LENGTH | RADIUS  | TANGENT | CHORD   | BEARING   | DELTA    |
|-------|--------|---------|---------|---------|-----------|----------|
| C1    | 134.41 | 272.00' | 68.61'  | 133.04' | N142704°W | 281845°  |
| C2    | 99.02  | 160.00' | 51.16'  | 97.45'  | N715829°E | 352738°  |
| C3    | 45.17  | 160.00' | 22.74'  | 45.02'  | N460922°E | 161035°  |
| C4    | 252.05 | 50.00'  | 35.78'  | 58.19'  | N504647°W | 2884942° |
| C5    | 85.14  | 393.43' | 42.73'  | 84.97'  | N293859°W | 121244°  |
| C6    | 274.30 | 50.00'  | 62.82'  | 28.24'  | S750136°E | 2570203° |
| C7    | 196.64 | 223.00' | 105.23' | 190.33' | N253324°W | 503123°  |
| C8    | 154.25 | 223.00' | 80.64'  | 151.66' | S704152°E | 324534°  |
| C9    | 252.29 | 50.00'  | 35.60'  | 58.00'  | N892521°E | 2890556° |
| C10   | 112.77 | 217.00' | 57.69'  | 111.49' | S303920°W | 294631°  |
| C11   | 171.69 | 500.00' | 86.70'  | 170.84' | N841452°W | 194026°  |
| C12   | 252.29 | 50.00'  | 35.60'  | 58.00'  | N040505°W | 2890556° |
| C13   | 59.72  | 217.00' | 30.05'  | 59.54'  | S075305°W | 154610°  |
| C14   | 39.34  | 300.00' | 19.70'  | 39.31'  | N030801°W | 073046°  |
| C15   | 123.91 | 80.00'  | 78.26'  | 111.89' | N450020°W | 884436°  |
| C16   | 252.29 | 50.00'  | 35.60'  | 58.00'  | N892158°E | 2890556° |
| C17   | 112.77 | 300.00' | 57.03'  | 112.06' | N123133°E | 213141°  |
| C18   | 180.70 | 230.00' | 95.30'  | 176.08' | S002121°E | 453049°  |
| C19   | 79.84  | 400.00' | 40.05'  | 79.70'  | S612510°W | 112609°  |
| C20   | 252.29 | 50.00'  | 35.60'  | 58.00'  | S341752°E | 2890556° |
| C21   | 83.66  | 230.00' | 42.30'  | 83.20'  | S331658°E | 205024°  |
| C22   | 73.71  | 180.00' | 37.38'  | 73.20'  | N315817°W | 352746°  |
| C23   | 146.61 | 500.00' | 73.84'  | 146.09' | N830507°E | 164803°  |
| C24   | 58.33  | 180.00' | 29.42'  | 58.07'  | N105726°W | 183356°  |
| C25   | 81.24  | 200.00' | 41.19'  | 80.69'  | S560132°E | 231628°  |
| C26   | 105.81 | 520.00' | 53.09'  | 105.63' | S310501°W | 113931°  |
| C27   | 273.11 | 520.00' | 139.78' | 269.98' | S101229°W | 300533°  |
| C28   | 252.23 | 50.00'  | 35.64'  | 58.04'  | N551957°W | 2890214° |
| C29   | 58.21  | 301.00' | 29.20'  | 58.12'  | S344227°E | 110448°  |
| C30   | 49.18  | 155.76' | 24.80'  | 48.98'  | N030246°E | 180532°  |
| C31   | 97.74  | 193.14' | 99.70'  | 96.70'  | S033539°W | 285945°  |
| C32   | 54.02  | 193.14' | 27.19'  | 53.94'  | S185458°E | 160129°  |
| C33   | 105.70 | 302.23' | 53.40'  | 105.16' | N165433°W | 200218°  |
| C34   | 227.58 | 50.00'  | 58.76'  | 76.16'  | S425552°E | 2604735° |

STATE OF KANSAS, COUNTY OF SEDGWICK: ss.

I, Kenny E. Hill, being a duly licensed Land Surveyor in said County and State, do hereby certify that I have been in responsible charge of surveying and plotting "ABERDEEN 3RD ADDITION" to Wichita, Kansas, located in the West Half of Section 6, Township 27 South, Range 1 West of the 6th P.M. Sedgwick County, Kansas being described as follows:

Beginning at the Southeast Corner of the Southwest Quarter of Section 6, Township 27 South, Range 1 West of the 6th P.M. Sedgwick County, Kansas, thence North along the East line of the Southwest Quarter of said Section 6 on an assumed bearing of N00°38'02"W for a distance of 2644.71 feet to the Center of said Section 6; thence N00°34'39"W on the West line of the Northwest Quarter of said Section 6 for a distance of 825.86 feet to the Southeast corner of Lot 43, Block 1, Aberdeen Second Addition; thence S89°25'21"W for a distance of 285.00 feet along the southerly line of Aberdeen Second Addition; thence N36°24'55"W for a distance of 111.02 feet; thence S72°38'49"W for a distance of 148.06 feet; thence southeasterly on a circular curve having a radius of 301.00 feet and a central angle of 11°04'48", being north of a 58.12 foot chord bearing S34°42'27"E for an arc distance of 58.21 feet; thence S55°35'47"W for a distance of 169.79 feet; thence S0017°42"E for a distance of 439.90 feet; thence S89°42'18"W for a distance of 180.00 feet; thence S42°58'09"W for a distance of 116.73 feet; thence S0017°42"E for a distance of 250.00 feet; thence S76°49'25"W for a distance of 73.85 feet; thence S19°11'26"W for a distance of 161.68 feet; thence S49°29'17"E for a distance of 214.11 feet; thence S64°40'38"E for a distance of 123.13 feet; thence S23°52'57"W for a distance of 223.48 feet; thence S06°45'16"W for a distance of 90.80 feet; thence S45°31'25"W for a distance of 118.83 feet; thence S89°09'35"W for a distance of 225.00 feet; thence S00°50'25"E for a distance of 6.40 feet; thence S45°36'42"W for a distance of 359.11 feet; thence S40°46'36"E for a distance of 114.42 feet; thence S04°09'41"E for a distance of 383.76 feet; thence S56°22'55"W for a distance of 110.20 feet; thence S06°41'07"E for a distance of 439.42 feet; thence N88°30'08"E for a distance of 82.54 feet; to the Northwest corner of Evangel Assembly of God Addition; thence N88°30'08"E for a distance of 93.65 feet to a point of curve; thence on a circular curve to the left having a radius of 264.00 feet and a central angle of 88°00'22" for an arc distance of 405.50 feet; thence S89°59'44"E for a distance of 298.29 feet; thence southerly on a circular curve having a radius of 545.00 feet and a central angle of 46°13'20", being West of a 427.84 foot chord bearing S06°02'52"W for an arc distance of 439.67 feet to a point of curve; thence on a reverse circular curve having a radius of 655.00 feet and a central angle of 17°04'04" for an arc distance of 195.12 feet; thence S00°00'16"W for a distance of 291.03 feet to a point on the South line of the Southwest Quarter of said Section 6; thence N88°30'08"E for a distance of 634.22 feet to the point of beginning, subject to road right-of-way. Previously dedicated easements or street right-of-way are hereby vacated by virtue of K.S.A. 12-512(b).

The accompanying plat is a true and correct exhibit of property surveyed.

Dated this 5th day of MAY, 1999.

Poe And Associates of Kansas, Inc.  
Kenny E. Hill, L.S. 984  
Vice President

KNOW ALL MEN BY THESE PRESENTS:

That we, the undersigned, have caused the land described in the Surveyor's Certificate to be platted into lots, blocks, streets and reserves. The streets are hereby dedicated to and for the use of the public. Easements are hereby granted as indicated for the construction and maintenance of drainage, a wall and utilities. Utilities may cross the wall easement. Reserve A shall permit entry monuments, lighting, landscaping, fences, walls, irrigation systems and utilities confined to easements. Reserve B and C shall permit ponds, drainage, irrigation systems, walks, recreation facilities, and utilities confined to easements. The reserves are to be owned and maintained by a property owners association its successors and assigns. All abutters' rights of access to or from 21st Street North over and across the South line of Lot 51, Block 3 and Reserve B, except for one opening to Lot 51 are hereby granted to the City of Wichita. The minimum low opening elevation, for homes built on Lots 1 through 20, Block 3 shall be 168.6 City Datum (1358.00 MSL Datum), for homes built on Lots 21 through 34, Block 3 and Lots 3 through 7, Block 2 shall be 165.6 City Datum (1353.00 MSL Datum) and for homes built on Lots 8 through 23, Block 2 and Lots 35 through 51, Block 3 shall be 165.4 City Datum (1352.80 MSL Datum).

The Neville Family Trust III.

Gregory Alan Neville, Trustee  
Gregory Alan Neville, Trustee  
Alvin Leon Neville, Trustee  
Edward T. Neville, Trustee  
Rita A. Neville, Trustee

3AH-Inc.  
Mathias Eck, President

STATE OF KANSAS, COUNTY OF SEDGWICK: ss.

This instrument was acknowledged before me on this 11th day of May, 1999, by Mathias Eck President of 3AH-Inc.

My Appointment Expires: 11/22/99

DOUG D. ECK  
NOTARY PUBLIC  
STATE OF KANSAS  
My Appt. Exp. 11/22/99

STATE OF KANSAS, COUNTY OF SEDGWICK: ss.

This instrument was acknowledged before me on this 10th day of May, 1999, by Gregory Alan Neville, Alvin Leon Neville, Edward T. Neville and Rita A. Neville, Trustees of the Neville Family Trust III.

My Appointment Expires: 4/20/2002

SHARON J. KENT  
NOTARY PUBLIC - State of Kansas  
My Appt. Expires 4/20/2002

Sharon J. Kent  
Notary Public SHARON J. KENT

# ABERDEEN 3RD ADDITION

## TO WICHITA, SEDGWICK COUNTY, KANSAS

POE & ASSOCIATES OF KANSAS, INC.  
CONSULTING ENGINEERS  
5940 E. Central, Suite 200 • Wichita, KS 67208 • 316/865-4114 • Fax 316/865-4444

6: APPS\DCAP\6555\Final.dwg Mon May 03 14:53:01 1999 Kenny E. Hill P.E. Poe & Assoc of Kansas

