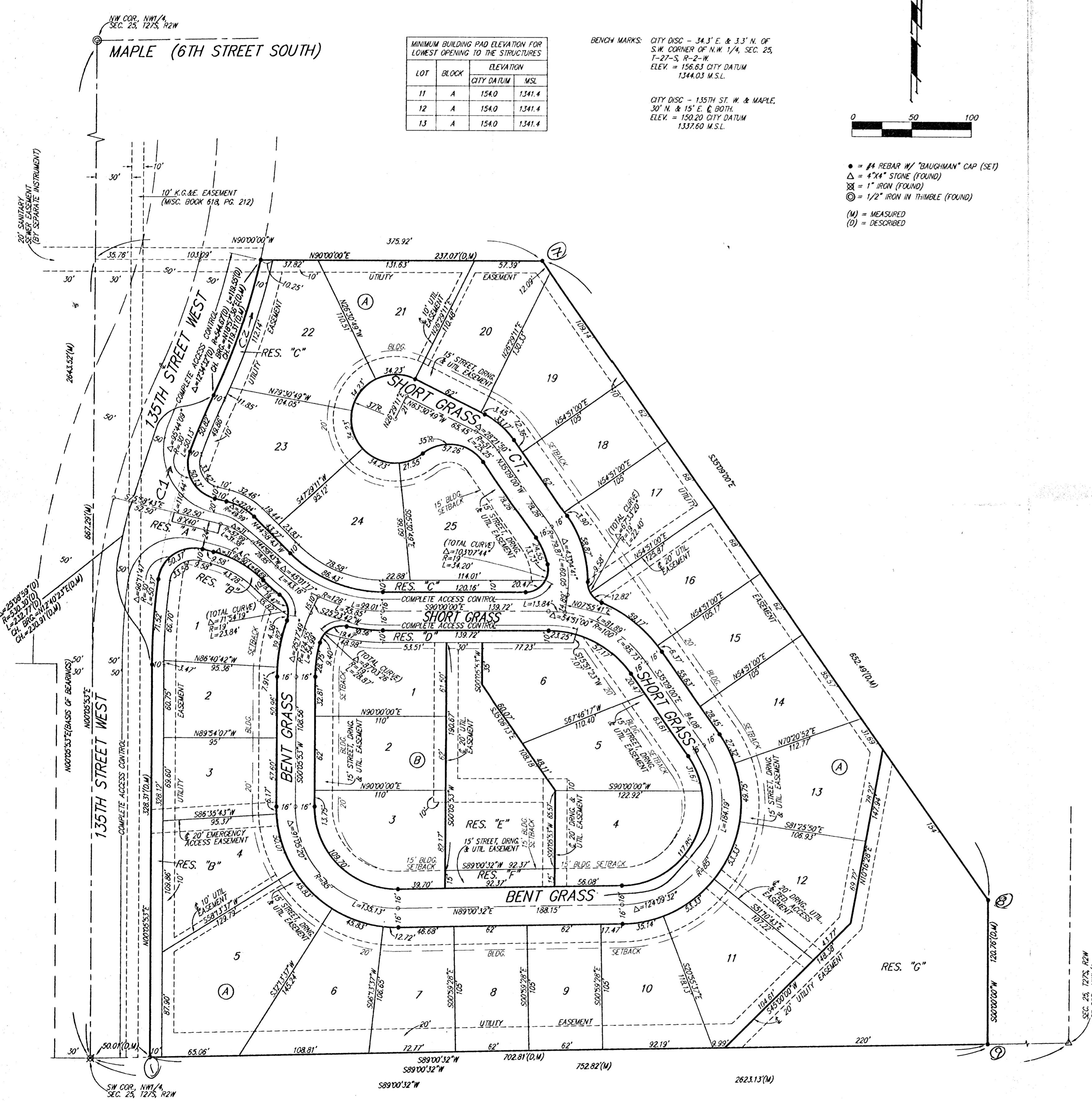


# AUBURN HILLS 9TH ADDITION

## WICHITA, SEDGWICK COUNTY, KANSAS



State of Kansas) ss We, Baughman Company, P.A. Surveyors in Sedgwick County) do hereby certify that we have surveyed and platted "AUBURN HILLS 9TH ADDITION", Wichita, Sedgwick County, Kansas and that the accompanying plat is a true and correct exhibit of the property surveyed, described as follows: A tract of land in the NW1/4 of Sec. 25, Twp. 27-S, R-2-W of the 6th P.M., Sedgwick County, Kansas, described as follows: Commencing at the SW corner of said NW1/4; thence N89°00'32"E along the south line of said NW1/4, 50.01 feet to a point 50 feet normally distant east of the west line of said NW1/4 and for a point of beginning; thence N00°05'53"E parallel with the west line of said NW1/4, 328.31 feet to the P.C. of a curve to the right; thence northerly and northeasterly along said curve, having a central angle of 25°08'59" and a radius of 530.30 feet, an arc distance of 232.77 feet, (having a chord length of 230.91 feet bearing N12°40'23"E), to the P.R.C. of a curve to the left; thence northeasterly along said curve, having a central angle of 12°34'32" and a radius of 544.67, an arc distance of 119.55 feet, (having a chord length of 119.31 feet bearing N18°57'36"E); thence N90°00'00"E, 237.07 feet; thence S35°09'00"E, 652.49 feet; thence S90°00'00"W, 120.76 feet to a point on the south line of said NW1/4; thence S89°00'32"W along the south line of said NW1/4, 702.81 feet to the point of beginning.

Existing public easements and dedications being vacated by virtue of K.S.A. 12-512(b).

Baughman Company, P.A.

Michael G. Conroy, Surveyor

Know all men by these presents that we, the undersigned, have caused the land in the surveyors certificate to be platted into Lots, Blocks, Streets, and Reserves to be known as "AUBURN HILLS 9TH ADDITION", Wichita, Sedgwick County, Kansas. The utility easements are hereby granted as indicated for the construction and maintenance of all public utilities. The drainage easement is hereby granted as indicated for drainage purposes. The street, drainage and utility easements are hereby dedicated to and for the use of the public, granted as indicated for drainage purposes, and granted as indicated for the construction and maintenance of all public utilities. The emergency access easement is hereby granted as indicated for emergency access purposes and no fences or other obstructions shall be constructed or placed on or within this easement. The drainage, utility, and pedestrian access easement is hereby granted as indicated for drainage purposes, for the construction and maintenance of all public utilities, and for pedestrian access purposes to or from Reserve "G", and no fences or other obstructions shall be constructed or placed on or within this easement. The streets are hereby dedicated to and for the use of the public. Reserve "A" is hereby reserved for landscaping, entry monuments, utilities, and streets. Reserves "B" and "C" are hereby reserved for entry monuments, open space, berms, landscaping, drainage, sidewalks, streets, screening walls, and utilities. Reserves "D" and "E" are hereby reserved for open space, berms, landscaping, drainage, sidewalks, screening walls, streets, and utilities. Reserve "F" is hereby reserved for open space, berms, landscaping, drainage, sidewalks, gazebos, and utilities as confined to easements. Reserve "G" is hereby reserved for open space, berms, landscaping, drainage, sidewalks, ponds, gazebos, and utilities as confined to easements. Reserves "A", "B", "C", "D", "E", "F", and "G" shall be owned and maintained by the homeowners association for the addition. All abutters rights of access to or from 135th Street West over and across the west line of Reserves "B" and "C", and to or from Short Grass over and across the south line of Reserve "C" and over and across the north line of Reserves "B" and "D" are hereby granted to the City of Wichita, Kansas. The Minimum Building Pad Elevations for the lowest opening to the structures shall be as indicated on the face of the plat.

West Wichita Development, Inc.

Jay W. Russell, President

State of Kansas) ss The foregoing instrument acknowledged before me, this 11th day of JANUARY, 1999, by Jay W. Russell, President of West Wichita Development, Inc., on behalf of the corporation.

Judith M. Terhune, Notary Public

This plat of "AUBURN HILLS 9TH ADDITION", Wichita, Sedgwick County, Kansas, has been submitted to and approved by the Wichita-Sedgwick County Metropolitan Area Planning Commission, Wichita, Kansas.

Dated this \_\_\_\_\_ day of \_\_\_\_\_, 1999.

William M. Johnson, Chairman

Marvin S. Krout, Secretary

This plat approved and all dedications shown hereon accepted by the City Council of the City of Wichita, Kansas, this \_\_\_\_\_ day of \_\_\_\_\_, 1999.

Bob Knight, Mayor

Pat Burnett, City Clerk

Entered on transfer record this \_\_\_\_\_ day of \_\_\_\_\_, 1999.

James Alford, County Clerk

State of Kansas) ss This is to certify that this plat has been filed for record in the office of the Register of Deeds, this \_\_\_\_\_ day of \_\_\_\_\_, 1999, at \_\_\_\_\_ o'clock \_\_\_\_\_ M.; and is duly recorded.

Bill Meek, Register of Deeds

Linda Kizzire, Deputy

We the undersigned, holders of a mortgage on the above described property, do hereby consent to this plat of "AUBURN HILLS 9TH ADDITION", Wichita, Sedgwick County, Kansas.

State Bank of Colwich

James D. Ashcraft, V.P.

State of Kansas) ss The foregoing instrument acknowledged before me, this 12th day of JANUARY, 1999, by JAMES D. ASHCRAFT, VICE-PRES., of State Bank of Colwich, on behalf of the bank.

Judith M. Terhune, Notary Public