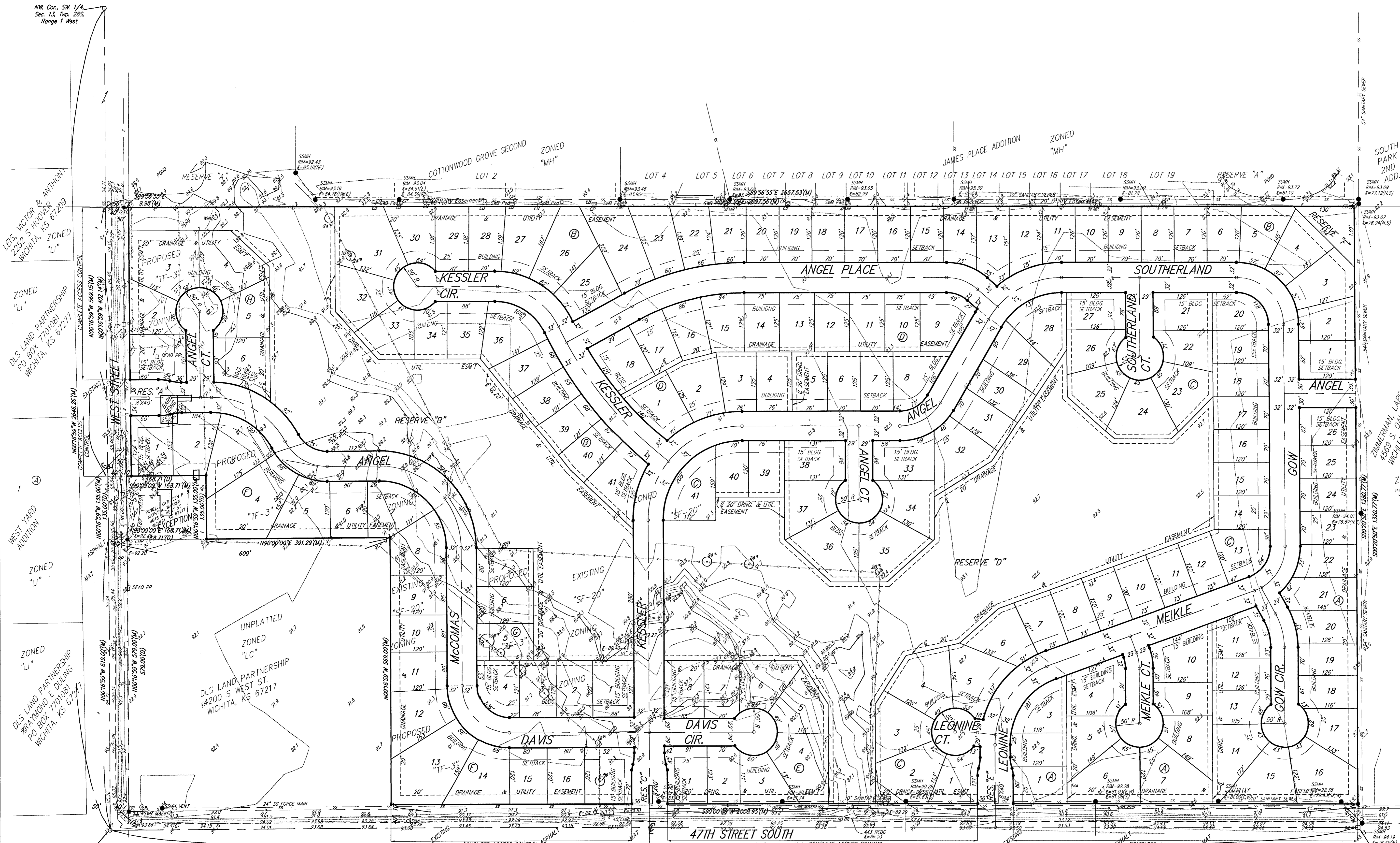


PRELIMINARY PLAT
SCANNED **ANGEL FIRE**
AN ADDITION TO WICHITA, SEDGWICK COUNTY, KANSAS



DEVELOPER:
CAYWOOD, LLC
ATTN: MATT ECK
5512 W. CENTRAL
WICHITA, KS 67212
PH. (316) 942-7402

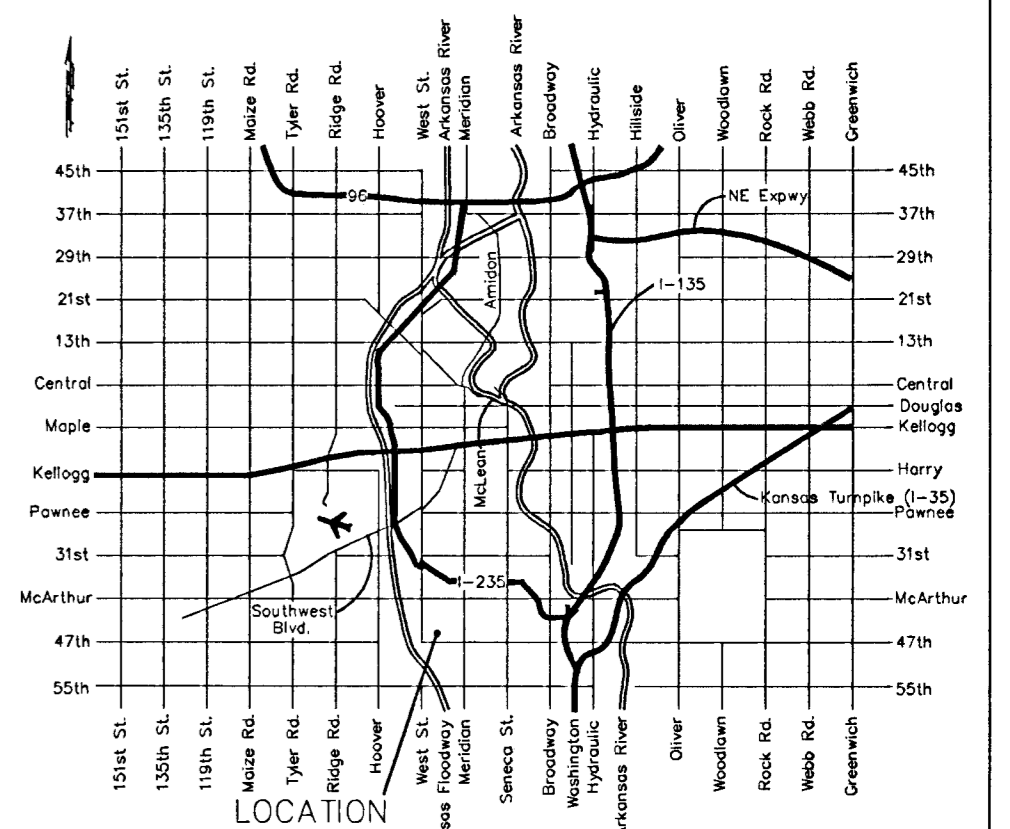
LEGAL DESCRIPTION:
THE S 1/2 OF THE SW 1/4, SEC. 13, TWP. 28-S, R-1-W OF THE 6TH P.M., EXCEPT THE SOUTH 619.00 FEET OF THE WEST 600.00' AND EXCEPT THE WEST 168.71' OF THE FEET NORTH 135.00 FEET OF THE SOUTH 754.00 FEET THERE OF.

BENCHMARK:
"C" CUT 56.7' SE OF THE SE COR OF THE SW 1/4, TO THE NE CORNER CONCRETE LIFT STATION PAD. ELEV.=91.85 CITY DATUM

RESERVES "A", "B", AND "C" ARE RESERVED FOR OPEN SPACE, LANDSCAPING, BERMS, SIDEWALKS, DRAINAGE PURPOSES, AND UTILITIES AS CONFIRMED TO EASEMENTS.
RESERVES "D", "E" AND "F" ARE RESERVED FOR ENTRY MONUMENTS, STREETS, OPEN SPACE, LANDSCAPING, AND BERMS.

- = #4 Baughman Rebar Set
- = #4 Rebar in Thimble Found
- = 3/4" Iron Pipe in Thimble Found
- = #4 Mid Kansas Rebar Found
- = Mid Kansas 3/4" Iron Pipe Found
- = Cable TV Pedestal
- = Electric Box
- = Guy Anchor
- = Light Pole
- = Power Pole
- = Satellite Dish
- = Sign
- = Sanitary Sewer Manhole
- = Tree
- = Transformer
- = Southwestern Bell Pedestal

- WATER LINE
- SOUTHWESTERN BELL
- GAS LINE
- CABLE TV
- FENCE
- ELECTRIC LINE
- SANITARY SEWER



RENOLLET, SHIRLEY D.
3245 W. 47TH. ST. S.
WICHITA, KS 67217

3RD ADDITION TO CHITWOOD ESTATES

2ND ADDITION

ZONED "SF-20" TO 2 CHITWOOD ESTATES

CHITWOOD ZONED "SF-20"

KESSLER AVE.

ZONED "SF-20" ESTATES

ZONED "SF-20" SPRINGS, FRED J. ETUX SPRINGS, FRED J. & KELLY J. SPRINGS % MARK W. & KELLY J. SPRINGS 6601 W. 35TH. ST. S. WICHITA, KS 67215

AVENUE ST.

VERSAR ADDITION ZONED "SF-20"

ARCHER, JOHN CALVIN 3315 W. 47TH. ST. WICHITA, KS 67217

ZONED "SF-20"

RENOLLET, CLINTON A. 3245 W. 47TH. ST. S. WICHITA, KS 67217

ZONED "SF-20" WAHL, GLADYS WAHL, KENDALL WAHL % KENDALL WAHL 3201 W. 47TH. ST. WICHITA, KS 67217

APPROXIMATE LOCATION OF 12" WATER LINE