

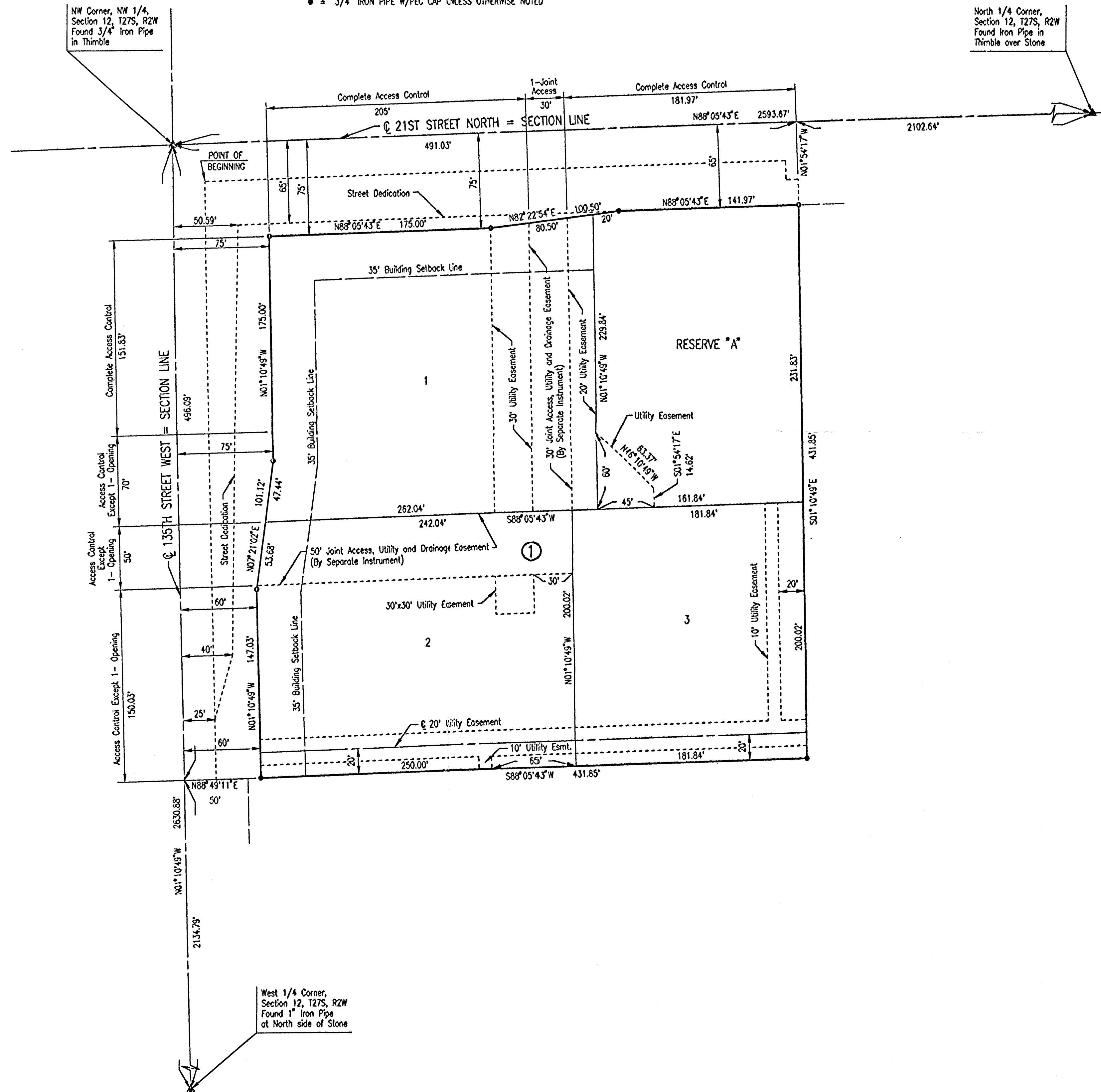
B.M. - CITY OF WICHITA BRASS DISC AT THE SOUTHWEST CORNER OF 135TH STREET WEST AND 21ST STREET NORTH. ELEV. = 1356.59 N.G.V.D.

NW MAIN PUMP STATION

AN ADDITION TO WICHITA, SEDGWICK COUNTY, KANSAS

SCALE: 1" = 50'

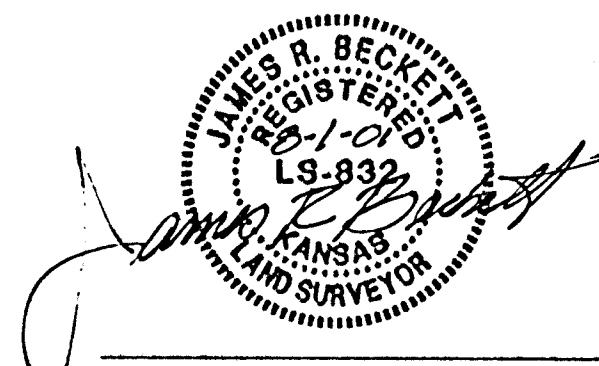
• = 3/4" IRON PIPE W/PEC CAP UNLESS OTHERWISE NOTED



STATE OF KANSAS }
COUNTY OF SEDGWICK } SS

WE, PROFESSIONAL ENGINEERING CONSULTANTS, P.A., ENGINEERS AND SURVEYORS IN AFORESAID STATE AND COUNTY, DO HEREBY CERTIFY THAT OF THIS 16th DAY OF August, 2001, WE HAVE SURVEYED AND PLATTED NW MAIN PUMP STATION, TO WICHITA, SEDGWICK COUNTY, KANSAS, INTO LOTS, BLOCK AND STREET, THE SAME BEING DESCRIBED AS FOLLOWS:

A TRACT OF LAND IN THE NORTHWEST QUARTER OF SECTION 12, TOWNSHIP 27 SOUTH, RANGE 2 WEST OF THE 6TH P.M., DESCRIBED AS BEGINNING 30 FEET SOUTH AND 25 FEET EAST OF THE NORTHWEST CORNER OF THE NORTHWEST QUARTER OF SAID SECTION 12; THENCE EAST 457.1 FEET; THENCE SOUTH 15 FEET; THENCE EAST 9.75 FEET; THENCE SOUTH 451.85 FEET; THENCE WEST 466.85 FEET; THENCE NORTH 466.85 FEET TO THE BEGINNING. EXCEPT:
A TRACT OF LAND DESCRIBED AS BEGINNING ON THE WEST LINE, 450 FEET SOUTH OF THE NW CORNER OF THE NW 1/4 OF SECTION 12, TOWNSHIP 27 SOUTH, RANGE 2 WEST; THENCE NORTH ALONG THE WEST LINE OF THE NW 1/4 A DISTANCE OF 450 FEET TO THE NW CORNER OF THE NW 1/4; THENCE EAST ALONG THE NORTH LINE OF THE NW 1/4 A DISTANCE OF 482.10 FEET; THENCE SOUTH 45 FEET; THENCE EAST 9.75 FEET; THENCE SOUTH 20 FEET TO A POINT 491.85 FEET EAST AND 85 FEET SOUTH OF THE NW CORNER OF THE NW 1/4; THENCE WEST PARALLEL TO THE NORTH LINE OF THE NW 1/4, TO A POINT 65 FEET SOUTH AND 50.59 FEET EAST OF THE NW CORNER OF THE NW 1/4 OF SECTION 12; THENCE SOUTHERLY TO A POINT 400 FEET SOUTH AND 40 FEET EAST OF THE NW CORNER OF THE NW 1/4; THENCE SOUTHERLY TO A POINT 450 FEET SOUTH AND 25 FEET EAST OF THE NW CORNER OF THE NW 1/4 OF SECTION 12; THENCE WEST 25 FEET TO THE POINT OF BEGINNING.



JAMES R. BECKETT, R.L.S. NO. 832
PROFESSIONAL ENGINEERING CONSULTANTS, P.A.

KNOW ALL MEN BY THESE PRESENTS THAT WE, THE UNDERSIGNED PROPERTY OWNERS OF THE LAND AS ABOVE SET FORTH IN THE SURVEYOR'S CERTIFICATE, HAVE CAUSED THE LAND TO BE SURVEYED AND PLATTED INTO LOTS, BLOCK AND STREET, THE SAME TO BE KNOWN AS NW MAIN PUMP STATION, TO WICHITA, SEDGWICK COUNTY, KANSAS.

EASEMENTS FOR THE CONSTRUCTION AND MAINTENANCE OF PUBLIC UTILITIES ARE HEREBY GRANTED.

THE STREETS ARE HEREBY DEDICATED TO AND FOR THE USE OF THE PUBLIC.

ALL ADJUTERS RIGHT OF ACCESS TO AND FROM 135TH STREET WEST AND 21ST STREET NORTH OVER AND ACROSS THE WEST LINE AND THE NORTH LINE OF BLOCK 1 IS HEREBY GRANTED TO THE CITY OF WICHITA, PROVIDED HOWEVER THAT BLOCK 1 SHALL HAVE ACCESS TO 135TH STREET WEST AT THREE LOCATIONS AS SHOWN AND BLOCK 1 SHALL HAVE ACCESS TO 21ST STREET NORTH AT ONE LOCATION AS SHOWN.

RESERVE "A" IS HEREBY PLATTED FOR DRAINAGE, LANDSCAPING, PEDESTRIAN IMPROVEMENTS, SIGNAGE AND UTILITIES CONFINED TO EASEMENTS. RESERVE "A" SHALL BE OWNED AND MAINTAINED BY AN OWNERS ASSOCIATION TO BE FORMED WITHIN NW MAIN PUMP STATION.

FOR ADDITIONAL INFORMATION AND BUILDING SETBACK LINES SEE C.U.I. NO. 2000-0040 ON FILE AT THE WICHITA-SEDGWICK COUNTY METROPOLITAN AREA PLANNING DEPARTMENT, WICHITA, KANSAS.

A DRAINAGE PLAN HAS BEEN APPROVED FOR THIS PLAT. ALL DRAINAGE EASEMENTS AND RIGHTS-OF-WAY SHALL REMAIN AT ESTABLISHED GRADES AND UNOBSTRUCTED TO ALLOW FOR THE CONVEYANCE OF STORM WATER, UNLESS MODIFIED WITH THE APPROVAL OF THE CITY ENGINEER.

OWNER: THE CITY OF WICHITA, A MUNICIPAL CORPORATION

AT THE DIRECTION OF THE CITY COUNCIL

CHRIS CHERCHES, CITY MANAGER

PAT BURNETT, CITY CLERK

STATE OF KANSAS }
COUNTY OF SEDGWICK } SS

THIS INSTRUMENT WAS ACKNOWLEDGED BEFORE ME ON THIS _____ DAY OF _____, 2001, BY CHRIS CHERCHES, CITY MANAGER, AND PAT BURNETT, CITY CLERK, OF THE CITY OF WICHITA, A MUNICIPAL CORPORATION.

_____, NOTARY PUBLIC

MY APPOINTMENT EXPIRES: _____

THIS PLAT OF NW MAIN PUMP STATION HAS BEEN SUBMITTED TO AND APPROVED BY THE WICHITA-SEDGWICK COUNTY METROPOLITAN AREA PLANNING COMMISSION, WICHITA, KANSAS.

DATED THIS _____ DAY OF _____, 2001.

WICHITA-SEDGWICK COUNTY METROPOLITAN AREA PLANNING COMMISSION

_____, ACTING CHAIRMAN
JERRY MICHAELIS

_____, SECRETARY
MARVIN S. KROUT

REVIEWED IN ACCORDANCE WITH K.S.A. 58-2005 ON THIS _____ DAY OF _____, 2001.

TRICIA L. ROBELLO, LS #1246
DEPUTY COUNTY SURVEYOR
SEDGWICK COUNTY KANSAS

THIS PLAT IS APPROVED AND ALL DEDICATIONS SHOWN HEREON, IF ANY ARE ACCEPTED BY THE CITY COUNCIL OF THE CITY OF WICHITA, KANSAS, THIS _____ DAY OF _____, 2001.

AT THE DIRECTION OF THE CITY COUNCIL

_____, CITY MANAGER
CHRIS CHERCHES

_____, CITY CLERK
PAT BURNETT

ENTERED ON TRANSFER RECORD THIS _____ DAY OF _____, 2001.

_____, COUNTY CLERK
DON BRACE

THIS IS TO CERTIFY THAT THIS INSTRUMENT WAS FILED FOR RECORD IN THE REGISTER OF DEEDS OFFICE AT _____ M., ON THE _____ DAY OF _____, 2001.

_____, REGISTER OF DEEDS
BILL WEEK

_____, DEPUTY
LINDA KIZZIRE