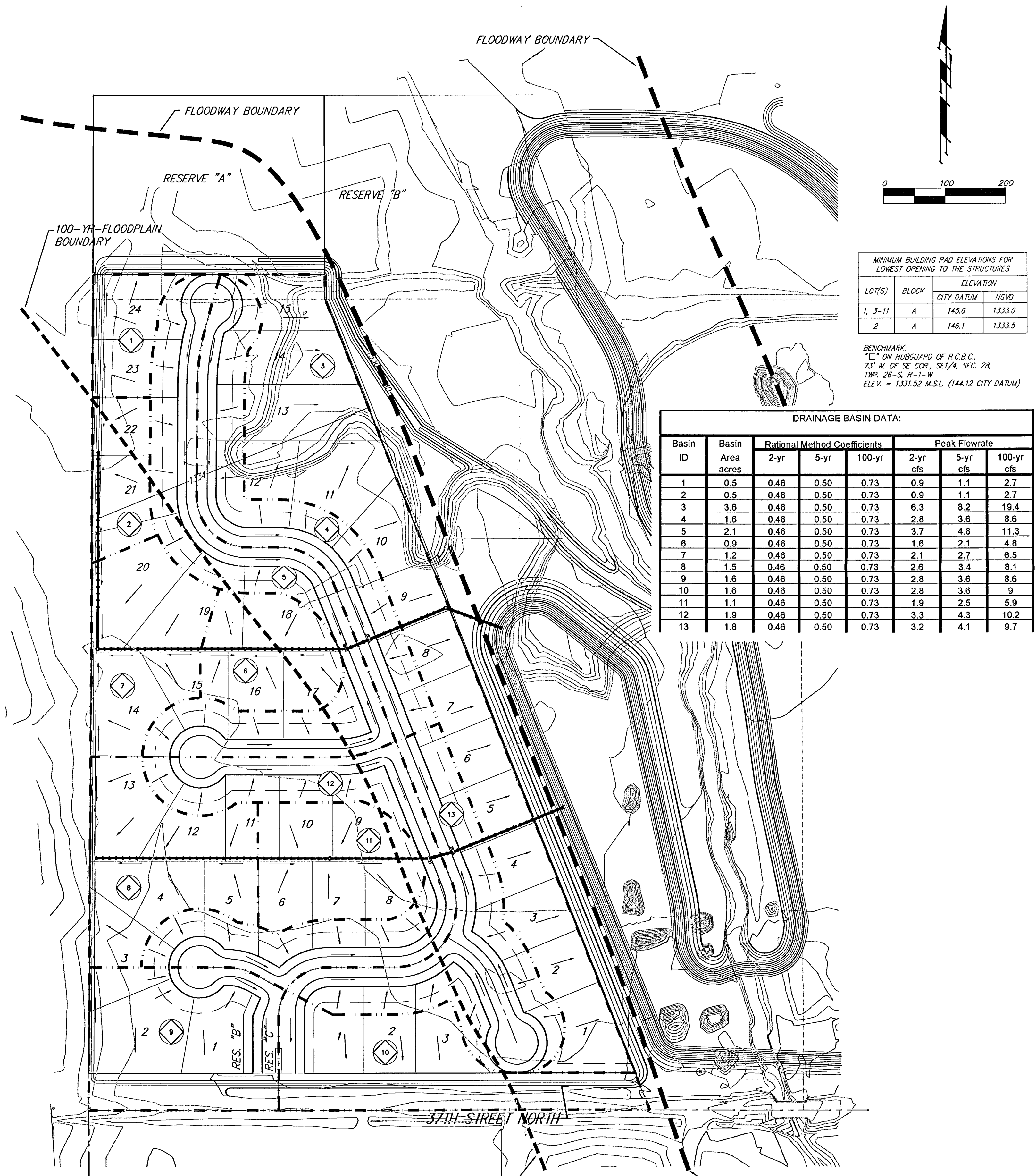


DRAINAGE CONCEPT SAND CREEK ADDITION WICHITA, SEDGWICK COUNTY, KANSAS



MINIMUM BUILDING PAD ELEVATIONS FOR LOWEST OPENING TO THE STRUCTURES

LOT(S)	BLOCK	ELEVATION	
		CITY DATUM	NGVD
1, 3-11	A	145.6	1333.0
2	A	146.1	1333.5

BENCHMARK:
"□" ON HUBBOARD OF R.C.B.C.,
23° W. OF SE. COR., SE 1/4, SEC. 28,
TWP. 26-S, R-1-W
ELEV. = 1331.52 M.S.L. (144.12 CITY DATUM)

DRAINAGE BASIN DATA:

Basin ID	Basin Area acres	Rational Method Coefficients			Peak Flowrate		
		2-yr	5-yr	100-yr	2-yr cfs	5-yr cfs	100-yr cfs
1	0.5	0.46	0.50	0.73	0.9	1.1	2.7
2	0.5	0.46	0.50	0.73	0.9	1.1	2.7
3	3.6	0.46	0.50	0.73	6.3	8.2	19.4
4	1.6	0.46	0.50	0.73	2.8	3.6	8.8
5	2.1	0.46	0.50	0.73	3.7	4.8	11.3
6	0.9	0.46	0.50	0.73	1.6	2.1	4.8
7	1.2	0.46	0.50	0.73	2.1	2.7	6.5
8	1.5	0.46	0.50	0.73	2.6	3.4	8.1
9	1.6	0.46	0.50	0.73	2.8	3.6	8.8
10	1.6	0.46	0.50	0.73	2.8	3.6	9
11	1.1	0.46	0.50	0.73	1.9	2.5	5.9
12	1.9	0.46	0.50	0.73	3.3	4.3	10.2
13	1.8	0.46	0.50	0.73	3.2	4.1	9.7

THIS PROPERTY HAS BEEN APPROVED FOR FLOODWAY FRINGE FILL AND CHANNEL CHANGE BY THE KANSAS DEPT. OF AGRICULTURE, DIVISION OF WATER RESOURCES. PERMIT #S LSG-0165-FF & CSG-0182-L