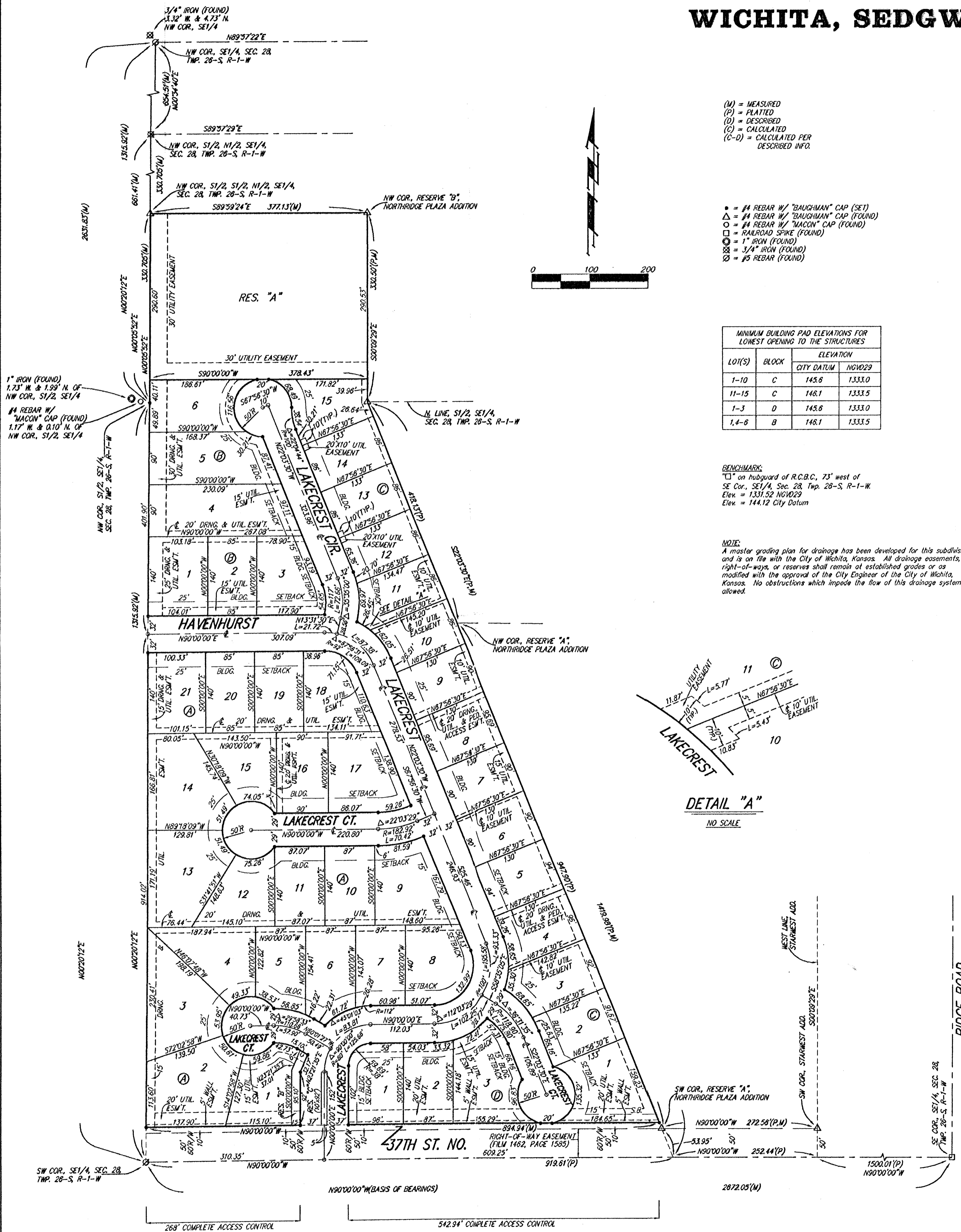


Revised 1/13

NORTHRIDGE ADDITION WICHITA, SEDGWICK COUNTY, KANSAS



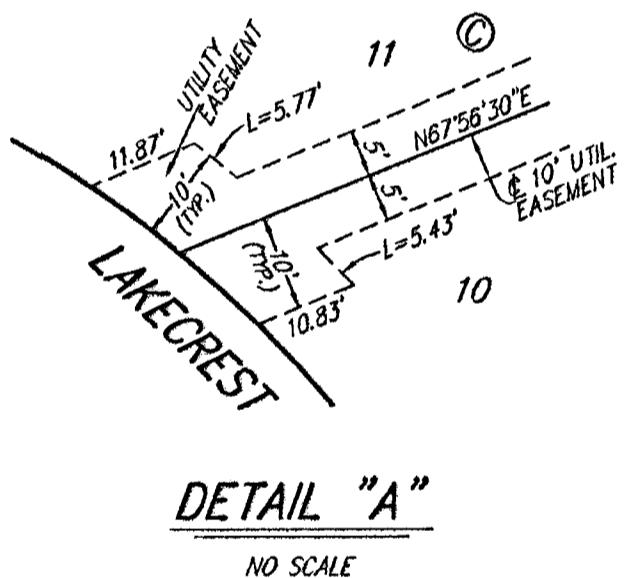
- (M) = MEASURED
- (P) = PLATTED
- (D) = DESCRIBED
- (C) = CALCULATED
- (F) = FOUND
- (C-D) = CALCULATED PER DESCRIBED INFO.

- = #4 REBAR W/ "BAUGHMAN" CAP (SET)
- △ = #4 REBAR W/ "BAUGHMAN" CAP (FOUND)
- = #4 REBAR W/ "MACON" CAP (FOUND)
- = RAILROAD SPIKE (FOUND)
- ⊙ = 1" IRON (FOUND)
- ⊗ = 3/4" IRON (FOUND)
- ⊘ = #5 REBAR (FOUND)

LOT(S)	BLOCK	ELEVATION	
		CITY DATUM	NGVD29
1-10	C	145.6	1333.0
11-15	C	146.1	1333.5
1-3	D	145.6	1333.0
1,4-6	B	146.1	1333.5

BENCHMARK
 □ on hubward of R.C.B.C., 75' west of SE Cor., SE 1/4, Sec. 28, Twp. 26-S, R-1-W.
 Elev. = 1331.52 NGVD29
 Elev. = 144.12 City Datum

NOTE:
 A master grading plan for drainage has been developed for this subdivision and is on file with the City of Wichita, Kansas. All drainage easements, right-of-ways, or reserves shall remain of established grades or as modified with the approval of the City Engineer of the City of Wichita, Kansas. No obstructions which impede the flow of this drainage system be allowed.



State of Kansas) SS
 Sedgwick County) We, Baughman Company, P.A., Surveyors in aforesaid county and state do hereby certify that we have surveyed and platted "NORTHRIDGE ADDITION", Wichita, Sedgwick County, Kansas and that the accompanying plat is a true and correct exhibit of the property surveyed, described as that part of the S1/2 of the SE1/4, Sec. 28, Twp. 26-S, R-1-W of the 6th P.M., Sedgwick County, Kansas and that part of the S1/2 of the S1/2 of the N1/2 of said SE1/4 lying west of the west line of Northridge Plaza Addition, Wichita, Sedgwick County, Kansas, subject to road rights-of-way of record.

Existing public easements and dedications being vacated by virtue of K.S.A. 12-512(b).
 Baughman Company, P.A.

Michael G. Conroy 10-07-2003 Surveyor
 Michael G. Conroy

Know all men by these presents that we, the undersigned, have caused the land in the surveyors certificate to be platted into Lots, Blocks, Streets, and Reserves, to be known as "NORTHRIDGE ADDITION", Wichita, Sedgwick County, Kansas. The utility easements are hereby granted as indicated for the construction and maintenance of all public utilities. The drainage and utility easements are hereby granted as indicated for drainage purposes and for the construction and maintenance of all public utilities. The drainage, utility, and pedestrian access easements are hereby granted as indicated for drainage purposes, for the construction and maintenance of all public utilities, and for pedestrian access to or from Reserve "A" as platted in Northridge Plaza Addition, Wichita, Sedgwick County, Kansas, and no fences or other obstructions shall be constructed or placed on or within these easements. The wall easements are hereby granted as indicated for the construction and maintenance of a private screening wall and utility main lines and service lines shall be allowed to cross these easements. The streets are hereby dedicated to and for the use of the public. Reserve "A" is hereby reserved for drainage purposes, landscaping, open space, berms, lakes, and utilities as confined to easements. Reserve "B" is hereby reserved for entry monuments, landscaping, open space, berms, drainage purposes, and utilities as confined to easements. Reserve "C" is hereby reserved for entry monuments, landscaping, open space, berms, drainage purposes, streets, and utilities. Reserve "A", "B", and "C" shall be owned and maintained by the homeowners association for the addition. Access controls shall be as depicted on the face of the plat and are hereby granted to the City of Wichita, Kansas. The Minimum Building Pad Elevations for the lowest opening to the structures shall be as indicated on the face of the plat.

Ritchie Investment Company, Inc., a Kansas corporation
Kevin M. Mullen, President
 Kevin M. Mullen

State of Kansas) SS
 Sedgwick County) The foregoing instrument acknowledged before me, this 21st day of August, 2003, by Kevin M. Mullen, President of Ritchie Investment Company, Inc., a Kansas corporation, on behalf of the corporation.
 My App't. Exp. 7-25-07

We, the undersigned holders of mortgages on the above described property, do hereby consent to this plat of "NORTHRIDGE ADDITION", Wichita, Sedgwick County, Kansas.
 INTRUST Bank, N.A.

Gary D. Schmitt, Senior V.P.
 GARY D. SCHMITT

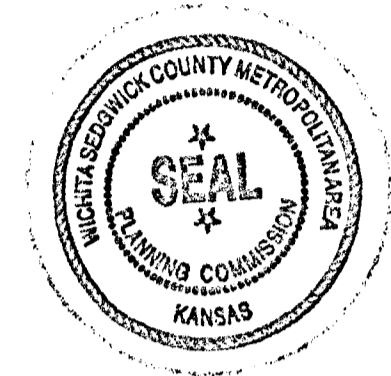
State of Kansas) SS
 Sedgwick County) The foregoing instrument acknowledged before me, this 16th day of September, 2003, by GARY D. SCHMITT, Senior Vice President of INTRUST Bank, N.A., on behalf of the bank.

Michelle C. Baker, Notary Public
 MICHELLE C. BAKER

My App't. Exp. 4-17-04
 MICHELE C. BAKER
 Notary Public, State of Kansas
 My App't. Expires 4-17-04

This plat of "NORTHRIDGE ADDITION", Wichita, Sedgwick County, Kansas has been submitted to and approved by the Wichita-Sedgwick County Metropolitan Area Planning Commission, Wichita, Kansas.
 Dated this 23rd day of January, 2003.
 Wichita-Sedgwick County Metropolitan Area Planning Commission

Bernard A. Hentgen, Chair
 Bernard A. Hentgen
Dale Miller, Secretary
 Dale Miller



This plat approved and all dedications shown herein accepted by the City Council of the City of Wichita, Kansas, this 18th day of November, 2003.

Carlis Mayans, Mayor
 Carlis Mayans
Karen Schofield, City Clerk
 Karen Schofield

Reviewed in accordance with K.S.A. 58-2005 on this 5th day of November, 2003.

Theresa L. Robello, Deputy County Surveyor
 Theresa L. Robello, L.S. #1246
 Deputy County Surveyor
 Sedgwick County, Kansas

Entered on transfer record this _____ day of _____, 2003.

Don Brace, County Clerk
 Don Brace

State of Kansas) SS
 Sedgwick County) This is to certify that this plat has been filed for record in the office of the Register of Deeds, this _____ day of _____, 2003 at _____ o'clock _____ M., and is duly recorded.

Bill Meek, Register of Deeds
 Bill Meek

Linda Kizzire, Deputy
 Linda Kizzire



NORTHRIDGE ADDITION