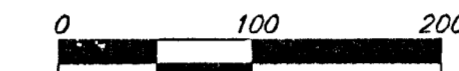
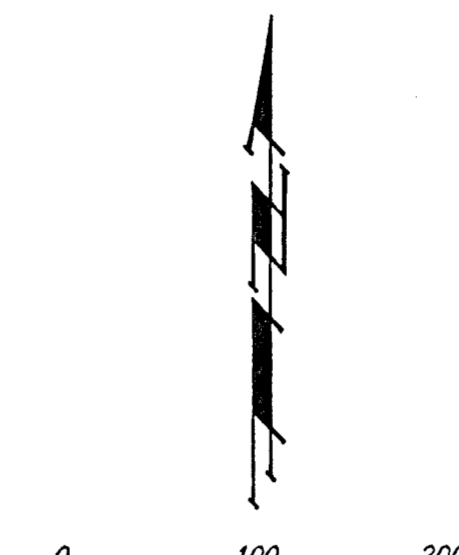
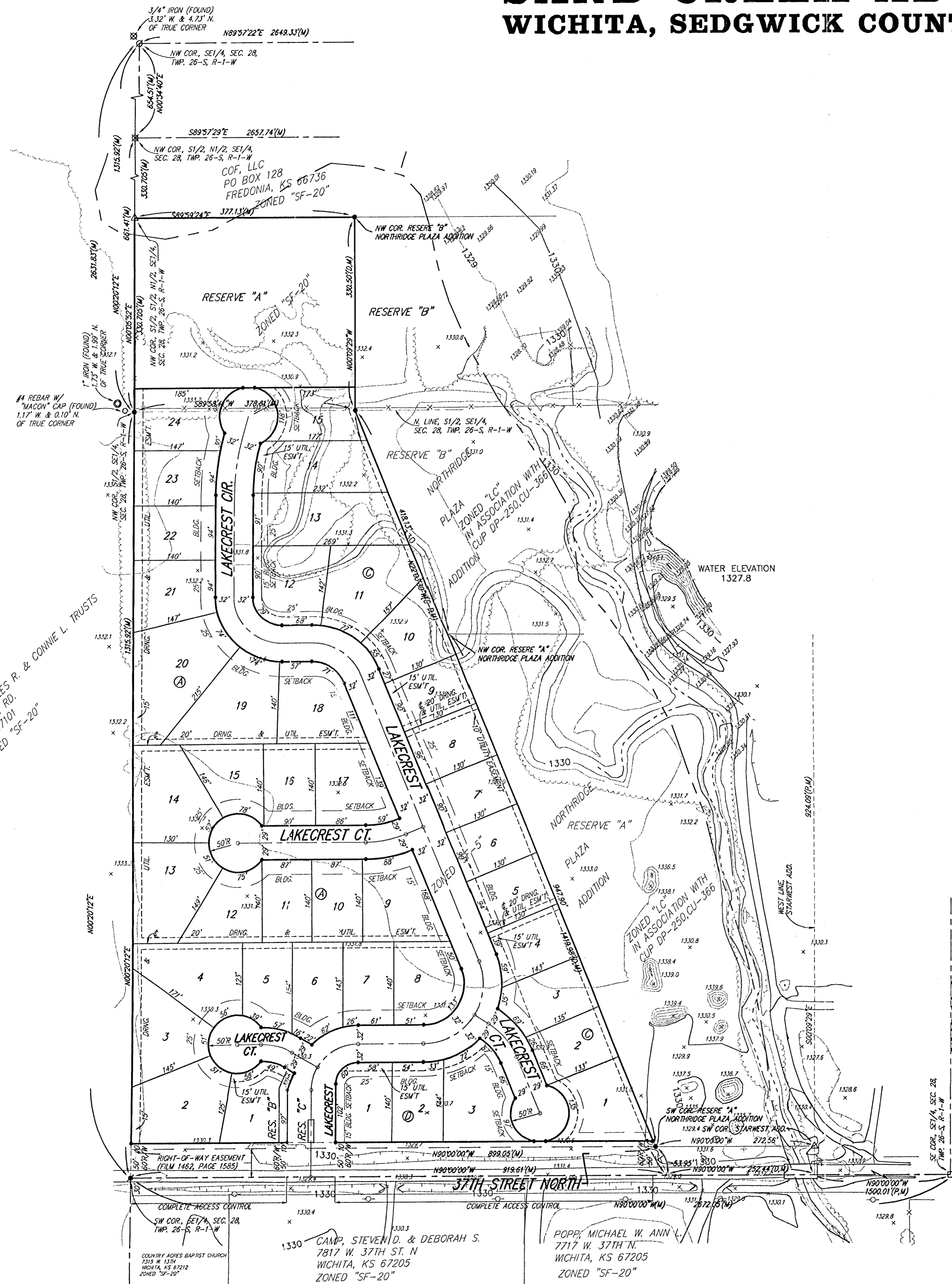


PRELIMINARY PLAT
SAND CREEK ADDITION
WICHITA, SEDGWICK COUNTY, KANSAS



DATE OF PREPARATION: NOVEMBER 18, 2002
 DATE OF TOPOGRAPHY: JANUARY 2000
 CONTOUR INTERVALS = 1 FOOT

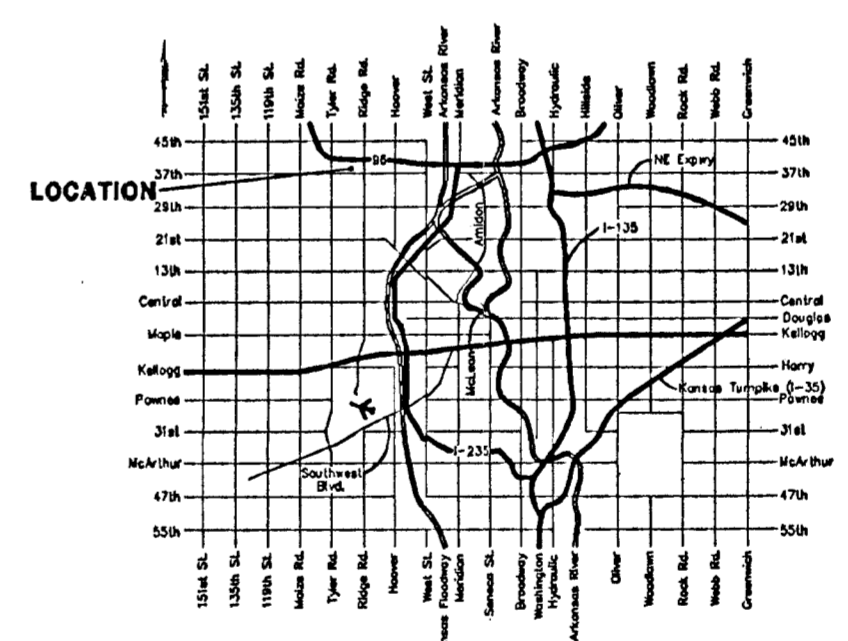
- (M) = MEASURED
- (P) = PLATTED
- (D) = DESCRIBED
- (C) = CALCULATED
- (C-D) = CALCULATED PER DESCRIBED INFO.

- = #4 REBAR W/ "BAUGHMAN" CAP (SET)
- △ = #4 REBAR W/ "BAUGHMAN" CAP (FOUND)
- = #4 REBAR W/ "BAUGHMAN" CAP (FOUND)
- = RAILROAD SPIKE (FOUND)
- × = CHISELED CROSS (FOUND)
- ⊙ = 1" IRON (FOUND)
- ⊗ = 3/4" IRON (FOUND)
- ⊘ = #5 REBAR (FOUND)
- = #4 REBAR (FOUND)

OWNER:
 Ritche Investments Co. Inc.
 C/O: Jay Russell
 12600 W. 13th
 Wichita, KS 67235
 316-722-2417

LEGAL DESCRIPTION:
 That part of the S 1/2 of the SE 1/4, Sec. 28, Twp. 26-S, R-1-W of the 6th P.M., Sedgwick County, Kansas and that part of the S 1/2 of the S 1/2 of the N 1/2 of said SE 1/4 lying west of the west line of Northridge Plaza Addition, Wichita, Sedgwick County, Kansas, subject to road rights-of-way of record.

BENCHMARK:
 "□" on hubguard of R.C.B.C., 73' west of SE Cor., SE1/4, Sec. 28, Twp. 26-S, R-1-W.
 Elev. = 1331.52 NGVD29
 Elev. = 144.12 City Datum



RESERVE "A" IS RESERVED FOR LANDSCAPING, OPEN SPACE, BERMS, LAKES, DRAINAGE PURPOSES, AND UTILITIES AS CONFINED TO EASEMENTS.
 RESERVE "B" IS RESERVED FOR ENTRY MONUMENTS, LANDSCAPING, OPEN SPACE, BERMS, DRAINAGE PURPOSES, AND UTILITIES AS CONFINED TO EASEMENTS.
 RESERVE "C" IS RESERVED FOR ENTRY MONUMENTS, STREETS, LANDSCAPING, OPEN SPACE, BERMS, DRAINAGE PURPOSES, AND UTILITIES.

WOODARD, CHARLES R. & CONNIE L. TRUSTS
 4450 N. WAIZE RD.
 WAIZE, KS 67101
 ZONED "SF-20"

CAMP STEVEN D. & DEBORAH S.
 7817 W. 37TH ST. N
 WICHITA, KS 67205
 ZONED "SF-20"

POPP, MICHAEL W. ANN L.
 7717 W. 37TH N.
 WICHITA, KS 67205
 ZONED "SF-20"



BAUGHMAN COMPANY P. A.
 ENGINEERING, SURVEYING & PLANNING
 316-262-7271 • 316-262-7271 • WICHITA, KANSAS 67211
 P:\PLAT\SANDCREEKADD\DWG\SANDCREKEXP.DWG-RJC