

NORTHEAST WICHITA ELEVATED STORAGE TANK ADDITION

Wichita, Sedgwick County, Kansas

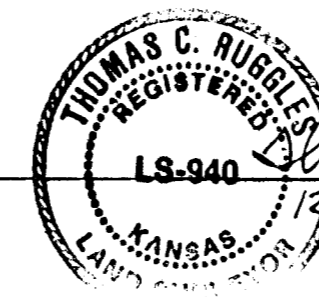
State of Kansas)
Sedgwick County) SS

We, Ruggles & Bohm, P.A., Land Surveyors in aforesaid county and state, do hereby certify that, under the supervision of the undersigned, we have surveyed and platted "NORTHEAST WICHITA ELEVATED STORAGE TANK ADDITION", Wichita, Sedgwick County, Kansas, and that the accompanying plat is a true and correct exhibit of the property surveyed, described as follows:

A tract of land located in the SW1/4 of Sec. 17, T26S, R2E of the 6th P.M., Sedgwick County, Kansas, described as beginning at the SE corner of said SW1/4; thence north along the east line of said SW1/4, 430.00 feet; thence west, parallel with the south line of said SW1/4, 400.00 feet; thence south, parallel with the east line of said SW1/4, 430.00 feet to a point on the south line of said SW1/4; thence east along the south line of said SW1/4, 400.00 feet to the place of beginning, EXCEPT the south 30.00 feet thereof for road right-of-way.

All public easements and dedications are being vacated by virtue of K.S.A. 12-512(b).

Ruggles & Bohm, P.A.



Thomas C. Ruggles
Thomas C. Ruggles
Land Surveyor

Know all men by these presents that we, the undersigned, have caused the land described in the surveyor's certificate to be platted into a Lot, and a Street, to be known as "NORTHEAST WICHITA ELEVATED STORAGE TANK ADDITION", Wichita, Sedgwick County, Kansas. A drainage plan for the plat is on file in the office of the City Engineer. Access control is hereby granted to the City of Wichita as indicated.

At the direction of the City Council

Chris Cherches
City Manager
Pat Graves
City Clerk

This plat of "NORTHEAST WICHITA ELEVATED STORAGE TANK ADDITION", Wichita, Sedgwick County, Kansas, has been submitted to and approved by the Wichita-Sedgwick County Metropolitan Area Planning Commission, Wichita, Kansas.
Dated this _____ day of _____, 200__.

Wichita-Sedgwick County Metropolitan Area Planning Commission

Chairman
Bernard A. Hentzen

Secretary
Dale Miller

This plat approved and all dedications shown hereon accepted by the City Council of the City of Wichita, Kansas, this _____ day of _____, 200__.

At the direction of the City Council

City Manager
Chris Cherches

City Clerk
Pat Graves

Reviewed in accordance with K.S.A. 58-2005 on this _____ day of _____, 200__.

Deputy County Surveyor
Tricia L. Robello, LS #1246
Sedgwick County Kansas

Entered on transfer record this _____ day of _____, 200__.

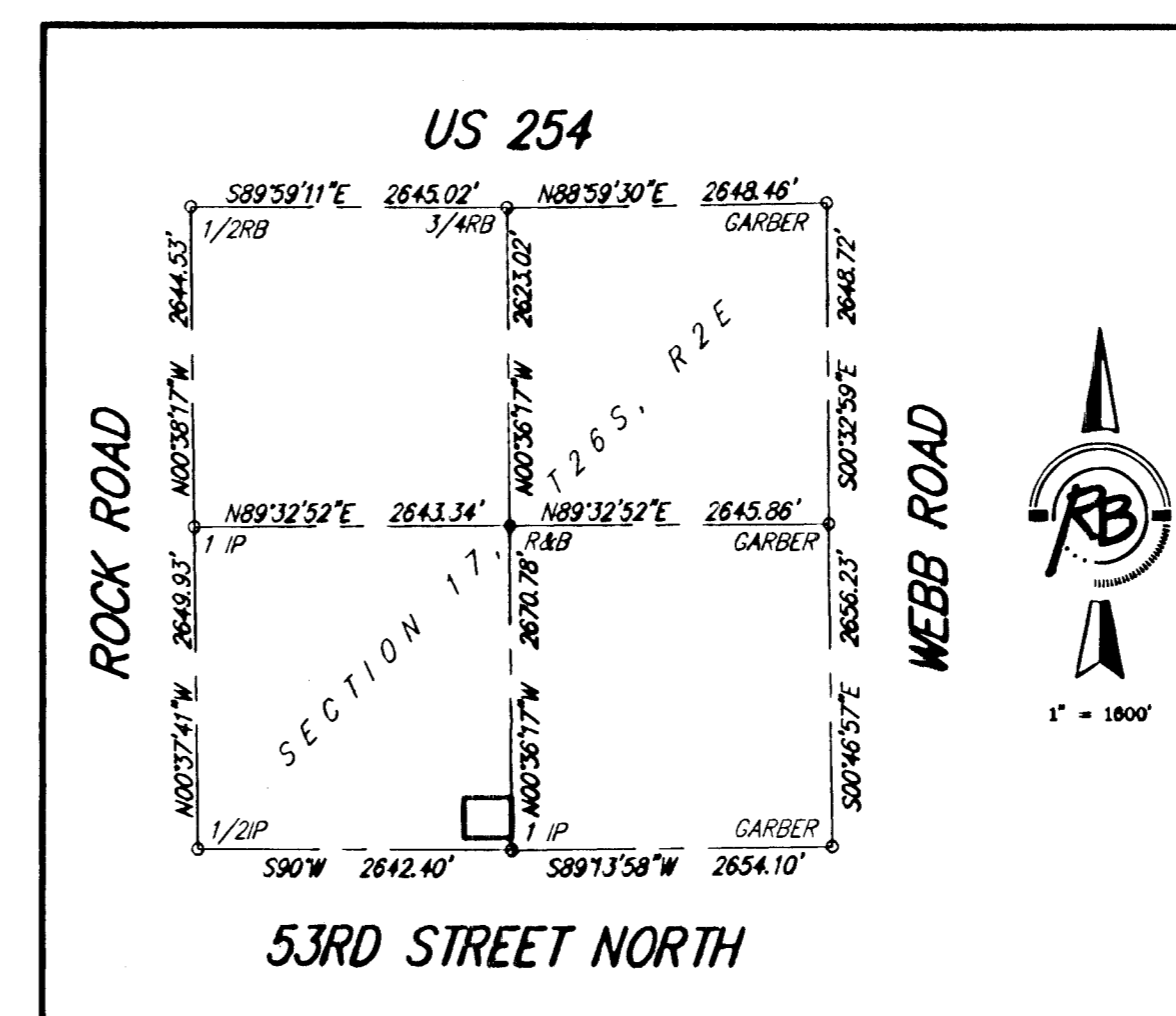
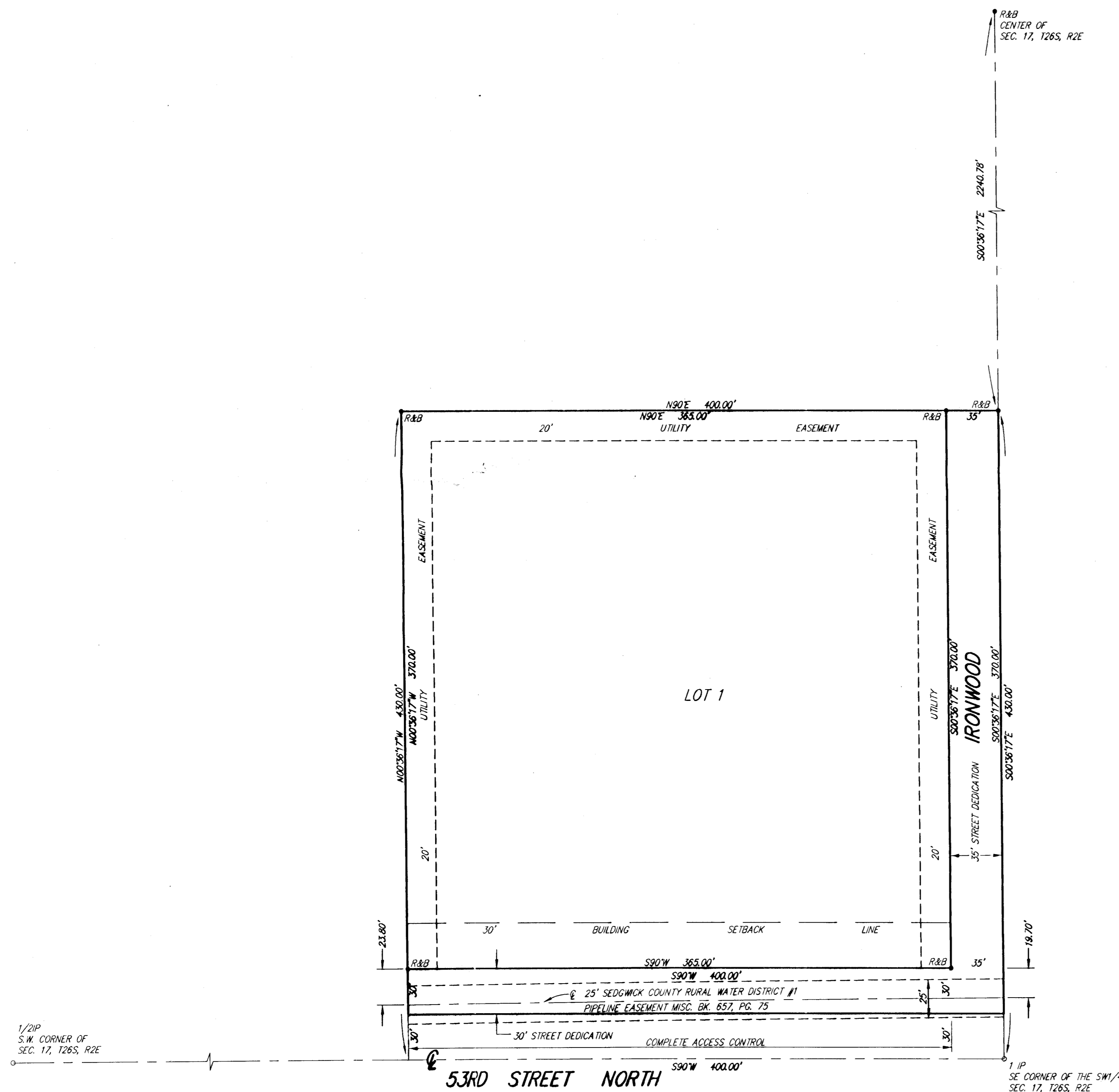
County Clerk
Don Brace

State of Kansas)
Sedgwick County) SS

This is to certify that this plat has been filed for record in the office of the Register of Deeds, this _____ day of _____, 200__, at _____ o'clock _____ M.; and is duly recorded.

Register of Deeds
Bill Meek

Deputy
Linda Kizzire



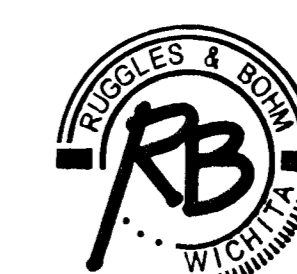
1" = 50'

BENCH MARK: R&B BRASS DISC IN CONCRETE 390' N. & 70' E. OF THE S.E. CORNER, SW1/4, SEC. 17, T26S, R2E
ELEV.=1410.21 NGVD
ELEV.=222.81 CITY DATUM

SURVEY MARKER LEGEND

- 1/2RB = 1/2" REBAR (FOUND)
- 3/4RB = 3/4" REBAR (FOUND)
- 1/2IP = 1/2" IRON PIPE (FOUND)
- 1 IP = 1" IRON PIPE (FOUND)
- GARBER = 5/8" REBAR W/GARBER CAP (FOUND)
- R&B = 1/2" REBAR W/R&B CAP (SET)

DWG FILE: 2224P
PROJECT NO. 0003224P
DECEMBER 3, 2002



Ruggles & Bohm, P.A.
Engineering, Surveying, Land Planning

924 North Main
Wichita, Kansas 67203
www.rbkansas.com
(316) 264-8008
(316) 264-4621 fax
E-mail: info@rbkansas.com