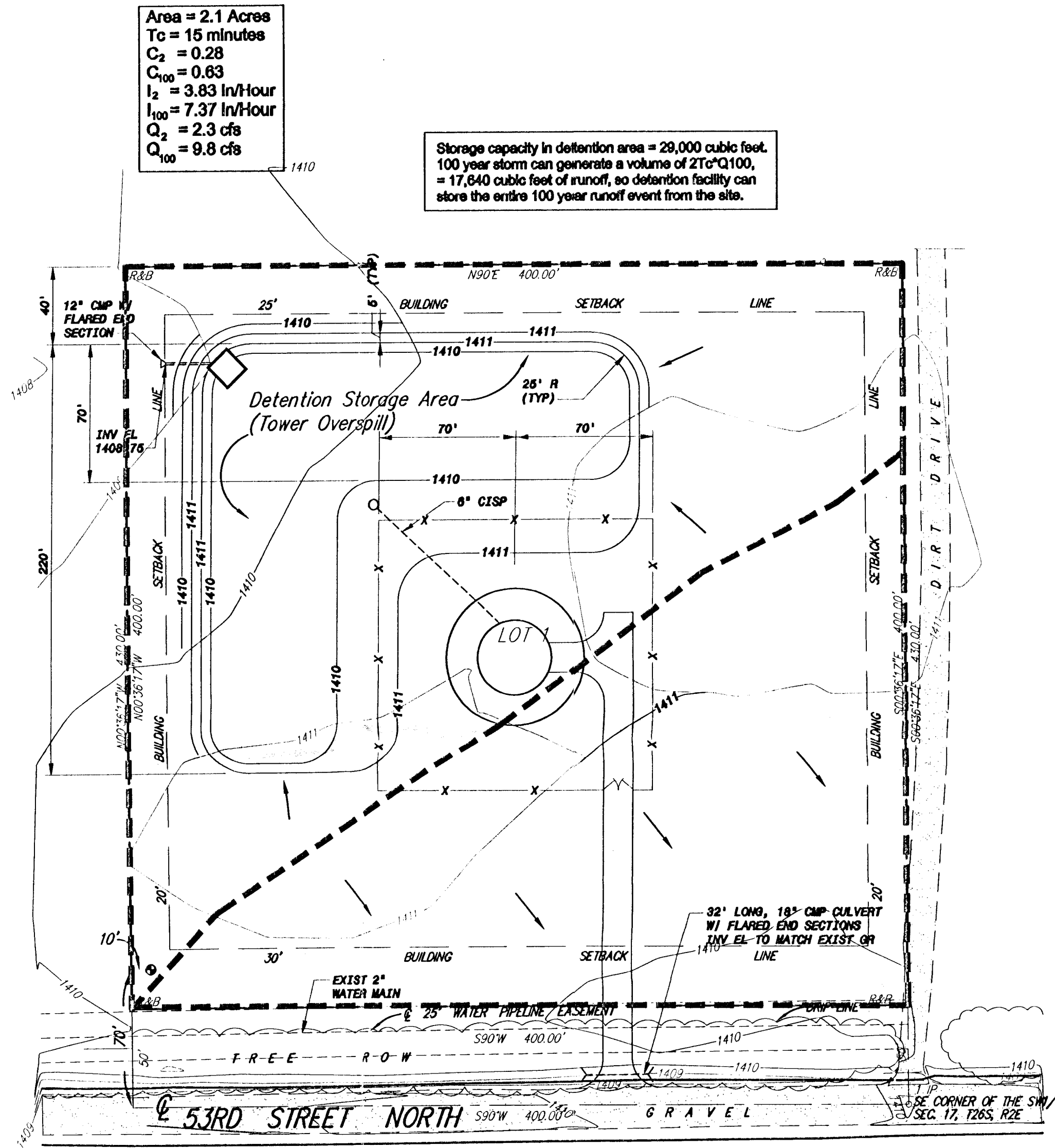


Drainage Plan

NORTHEAST WICHITA ELEVATED STORAGE TANK ADDITION

Wichita, Sedgwick County, Kansas



Area = 2.1 Acres
 Tc = 15 minutes
 C₂ = 0.28
 C₁₀₀ = 0.63
 I₂ = 3.83 In/Hour
 I₁₀₀ = 7.37 In/Hour
 Q₂ = 2.3 cfs
 Q₁₀₀ = 9.8 cfs

Storage capacity in detention area = 28,000 cubic feet.
 100 year storm can generate a volume of 2Tc*Q100,
 = 17,640 cubic feet of runoff, so detention facility can
 store the entire 100 year runoff event from the site.

LEGEND

BENCH MARK: R&B BRASS DISC IN CONCRETE 390' E & 70' N OF THE S.E. CORNER, SW1/4, SEC. 17, T26S, R2E ELEV=1410.21 NGVD

SURVEY MARKER LEGEND

- 1/2" R = 1/2" REBAR (FOUND)
- 3/4" R = 3/4" REBAR (FOUND)
- 1/2" P = 1/2" IRON PIPE (FOUND)
- 1" P = 1" IRON PIPE (FOUND)
- GARBER = 5/8" REBAR W/GARBER CAP (FOUND)
- R&B = 1/2" REBAR W/R&B CAP (SET)

Area = 1.4 Acres
 Tc = 15 minutes
 C₂ = 0.28
 C₁₀₀ = 0.63
 I₂ = 3.83 In/Hour
 I₁₀₀ = 7.37 In/Hour
 Q₂ = 1.5 cfs
 Q₁₀₀ = 6.5 cfs

DRAINAGE NOTES:
 FROM USCS SOIL SURVEY OF SEDGWICK COUNTY, KANSAS, SOIL GROUP ON SITE IS G₂, A TYPE D HYDROLOGICAL GROUP SOIL.
 DETENTION STORAGE INDICATED ON THE DRAINAGE PLAN SERVES TWO PURPOSES. IT WILL HANDLE TANK OVERSPILL IN THE EVENT OF A TANK VALVE FAILURE, AND IT WILL PROVIDE STORM WATER DETENTION FOR THE SITE.

LEGAL DESCRIPTION:

A tract of land located in the SW1/4 of Sec. 17, T26S, R2E of the 6th P.M., Sedgwick County, Kansas, described as beginning at the SE corner of said SW1/4; thence North along the east line of said SW1/4, 430.00 feet; thence West, parallel with the south line of said SW1/4, 400.00 feet; thence South, parallel with the east line of said SW1/4, 430.00 feet to a point on the south line of said SW1/4; thence East along the south line of said SW1/4, 400.00 feet to the place of beginning, EXCEPT the south 30.00 feet thereof for road right-of-way.

OWNERS:
 The City of Wichita
 455 N. Main
 Wichita, Kansas 67202

Attn: Mike Hughes
 Ph. (316) 269-4764

SUBDIVIDER & ENGINEER:
 Ruggles & Bohm P.A.

FLOOD ZONE:
 According to the FEMA/FIRM Community Panel No. 200321 0150 A, effective June 3, 1986; the property shown hereon is located in Zone C, an area of minimal flooding.

GROSS AREA:
 159,990.42 Sq. Ft.±
 3.67 Acres±

Drainage Plan NORTHEAST WICHITA ELEVATED STORAGE TANK ADDITION			
	Ruggles & Bohm, P.A. Engineering, Surveying, Land Planning		DESIGN CMB
	924 North Main Wichita, Kansas 67203 www.rtkansas.com		(316) 264-8008 (316) 264-4621 fax E-mail: info@rtkansas.com
DRAWING FILE 2224P\Drainage Plan	PROJECT NUMBER 2224P	DATE 9/11/02	DRAWN CMB REVIEW CMB UTILITY DATE 9/11/02
			SHEET 1 OF 1