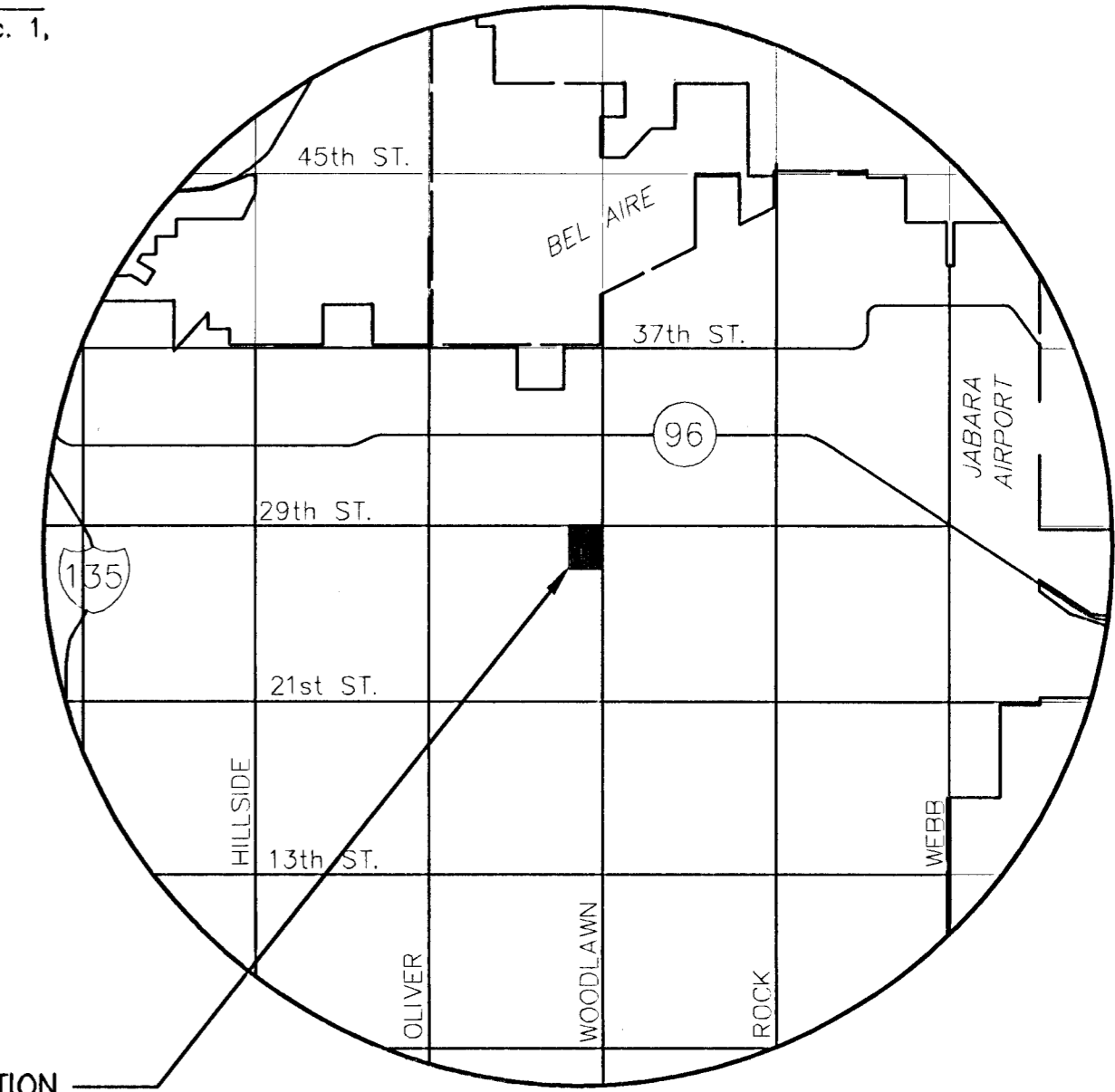


SE. Cor., COURTS II ADDITION
Fnd. 1/2" Rebar W/ PEC
id cap at 1/4 corner

NW. Cor., NE. 1/4, Sec. 1,
T27S, R1E, 6th P.M.



VICINITY MAP

LEGEND

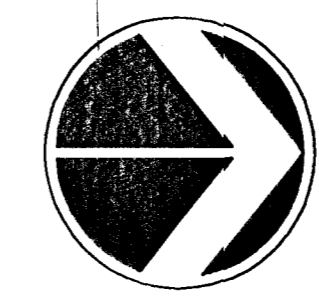
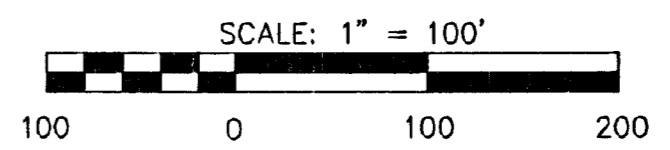
- G.M. - GAS METER
- G.L.G. - GROUND YARD LIGHT
- Y.L.P. - YARD LIGHT ON POLE
- E.M.H. - ELECTRIC MANHOLE
- S.L. - SIGNAL LIGHT
- C.T. - CONIFEROUS TREE & DIAMETER
- D.T. - DECIDUOUS TREE & DIAMETER
- B. - BUSH
- P.A. - POWER POLE AND GUY ANCHOR
- E.B. - ELECTRIC BOX
- S.C.O. - SEWER CLEAN-OUT
- E.O.T. - EDGE OF TREES
- F. - FENCE
- B.M. - BENCHMARK
- S.W.M.H. - STORM WATER MANHOLE
- S.S.M.H. - SANITARY SEWER MANHOLE
- T.M.H. - TELEPHONE MANHOLE
- S.C. - SECTION CORNER
- S/R - 5/8" REBAR/MKEC CLS #39 SET
- P.C.F. - PROPERTY CORNER FOUND
- S.D. - 10' STREET DEDICATION
- P. - POLE
- G. - GATE
- T.S.M. - TRAFFIC SIGNAL MANHOLE
- S.P.K. - SPRINKLER HEAD
- W. - WALL
- L.P. - LIGHT POLE
- F.H. - FIRE HYDRANT
- W.V. - WATER VALVE
- W.M. - WATER METER
- I.C.V. - IRRIGATION CONTROL VALVE
- G.I. - GRATE INLET
- T.R. - TELEPHONE RISER
- I. - INLET
- S.S.P. - STORM SEWER PIPE
- W.L. - WATER LINE
- S.S.L. - SANITARY SEWER LINE
- H.P.G.P. - HIGH PRESSURE GAS PIPE LINE
- T.L. - TELEPHONE LINE
- U.E.L. - UNDERGROUND ELECTRIC LINE
- O.E. - OVERHEAD ELECTRIC

BENCH MARKS

- BM# - BM - City Disk NE corner of hub guard on RCBC on 29th Street 100' E and 75' N of the CL of 29th and Woodlawn. Elev.=172.41
- BM#1 - RR spike in NE face PP at the SW Corner for 29th Street and Woodlawn. Elev.= 177.34
- BM#2 - RR Spike in W face of 5th PP S of 29th Street, W side of Woodlawn. Elev.= 188.45
- BM#3 - RR Spike in W face of 7th PP S of 29th Street, W side of Woodlawn. Elev.= 190.70
- BM#4 - RR spike in S face of 6th PP W of Woodlawn, S side of 29th Street. Elev.= 180.88

NOTES

1. EXISTING/PROPOSED ZONING: LIMITED COMMERCIAL "LC" AND SINGLE FAMILY "SF-5"
2. LOT MINIMUM PADS AS INDICATED ON DRAINAGE PLAN, PROVIDED AT THE TIME OF FINAL PLATTING.

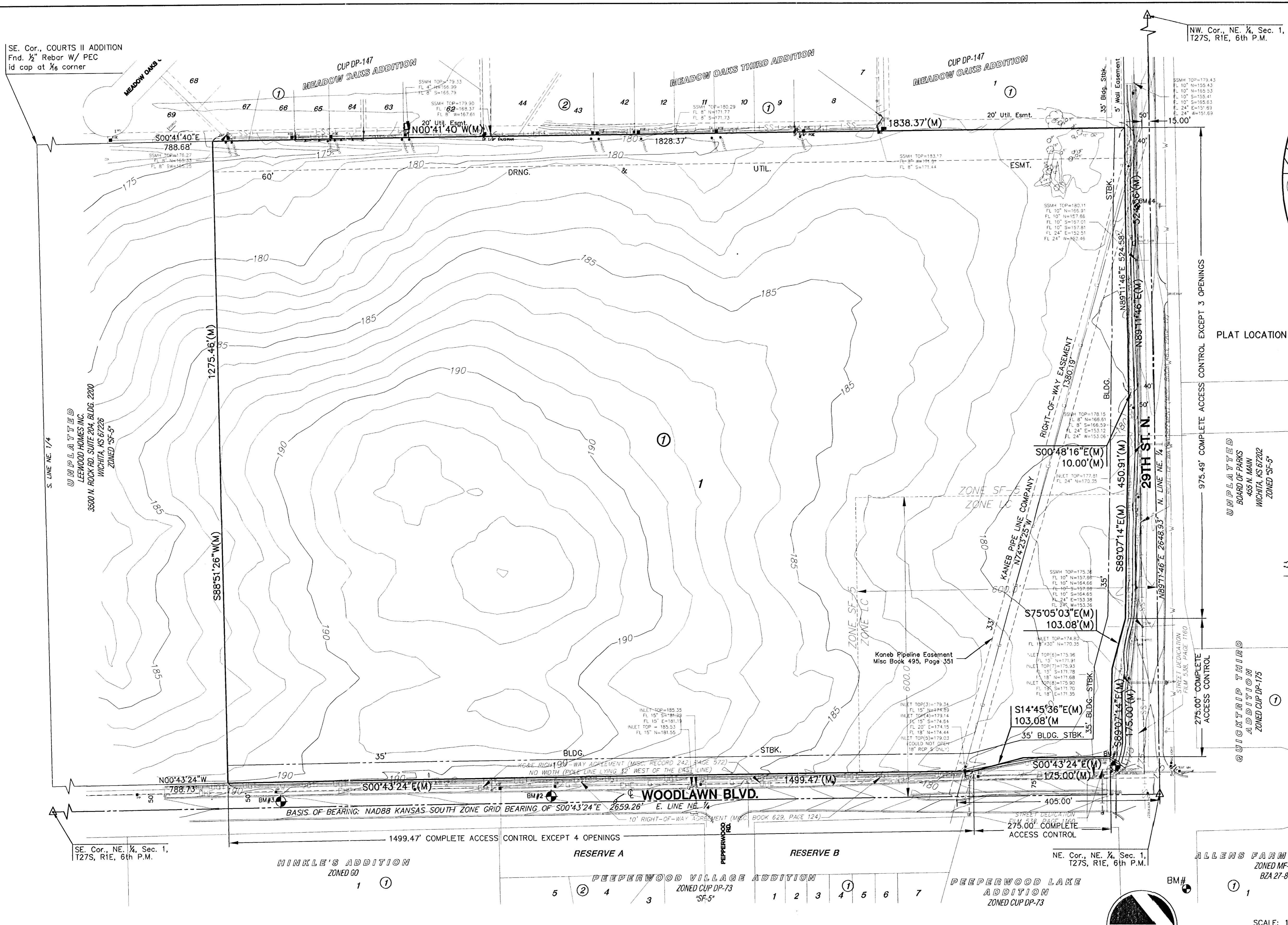


PRELIMINARY PLAT

NORTHEAST ELEMENTARY SCHOOL ADDITION

OWNERS/DEVELOPER: Unified School District #259 201 N. Water Street, Wichita, KS 67202 316-973-4000

DATE: JULY, 2002



SE. Cor., NE. 1/4, Sec. 1,
T27S, R1E, 6th P.M.

NE. Cor., NE. 1/4, Sec. 1,
T27S, R1E, 6th P.M.

ALLENS FARM ADDITION
ZONED MF-13
BZA 27-85

HINKLE'S ADDITION
ZONED G0

RESERVE A

RESERVE B

PEPPERWOOD VILLAGE ADDITION
ZONED CUP DP-73

PEPPERWOOD LAKE
ADDITION
ZONED CUP DP-73

FLOODWAY RESERVE

UNPLATTED
BOARD OF PARKS
465 N. MAIN
WICHITA, KS 67202
ZONED SF-5

UNPLATTED
THIRD
ADDITION
ZONED CUP DP-175

S. LINE NE. 1/4
UNPLATTED
LEEWOOD HOMES INC.
3500 N. ROCK RD. SUITE 204, BLDG. 2200
WICHITA, KS 67226
ZONED SF-5

SE. Cor., NE. 1/4, Sec. 1,
T27S, R1E, 6th P.M.

HINKLE'S ADDITION
ZONED G0

RESERVE A

RESERVE B

PEPPERWOOD VILLAGE ADDITION
ZONED CUP DP-73

PEPPERWOOD LAKE
ADDITION
ZONED CUP DP-73

FLOODWAY RESERVE

ALLENS FARM ADDITION
ZONED MF-13
BZA 27-85

UNPLATTED
THIRD
ADDITION
ZONED CUP DP-175

S. LINE NE. 1/4
UNPLATTED
LEEWOOD HOMES INC.
3500 N. ROCK RD. SUITE 204, BLDG. 2200
WICHITA, KS 67226
ZONED SF-5

SE. Cor., NE. 1/4, Sec. 1,
T27S, R1E, 6th P.M.

HINKLE'S ADDITION
ZONED G0

RESERVE A

RESERVE B

PEPPERWOOD VILLAGE ADDITION
ZONED CUP DP-73

PEPPERWOOD LAKE
ADDITION
ZONED CUP DP-73

FLOODWAY RESERVE

ALLENS FARM ADDITION
ZONED MF-13
BZA 27-85

UNPLATTED
THIRD
ADDITION
ZONED CUP DP-175

S. LINE NE. 1/4
UNPLATTED
LEEWOOD HOMES INC.
3500 N. ROCK RD. SUITE 204, BLDG. 2200
WICHITA, KS 67226
ZONED SF-5

SE. Cor., NE. 1/4, Sec. 1,
T27S, R1E, 6th P.M.

HINKLE'S ADDITION
ZONED G0

RESERVE A

RESERVE B

PEPPERWOOD VILLAGE ADDITION
ZONED CUP DP-73

PEPPERWOOD LAKE
ADDITION
ZONED CUP DP-73

FLOODWAY RESERVE

ALLENS FARM ADDITION
ZONED MF-13
BZA 27-85

UNPLATTED
THIRD
ADDITION
ZONED CUP DP-175

S. LINE NE. 1/4
UNPLATTED
LEEWOOD HOMES INC.
3500 N. ROCK RD. SUITE 204, BLDG. 2200
WICHITA, KS 67226
ZONED SF-5

SE. Cor., NE. 1/4, Sec. 1,
T27S, R1E, 6th P.M.

HINKLE'S ADDITION
ZONED G0

RESERVE A

RESERVE B

PEPPERWOOD VILLAGE ADDITION
ZONED CUP DP-73

PEPPERWOOD LAKE
ADDITION
ZONED CUP DP-73

FLOODWAY RESERVE

ALLENS FARM ADDITION
ZONED MF-13
BZA 27-85

UNPLATTED
THIRD
ADDITION
ZONED CUP DP-175

S. LINE NE. 1/4
UNPLATTED
LEEWOOD HOMES INC.
3500 N. ROCK RD. SUITE 204, BLDG. 2200
WICHITA, KS 67226
ZONED SF-5

SE. Cor., NE. 1/4, Sec. 1,
T27S, R1E, 6th P.M.

HINKLE'S ADDITION
ZONED G0

RESERVE A

RESERVE B

PEPPERWOOD VILLAGE ADDITION
ZONED CUP DP-73

PEPPERWOOD LAKE
ADDITION
ZONED CUP DP-73

FLOODWAY RESERVE

ALLENS FARM ADDITION
ZONED MF-13
BZA 27-85

UNPLATTED
THIRD
ADDITION
ZONED CUP DP-175

S. LINE NE. 1/4
UNPLATTED
LEEWOOD HOMES INC.
3500 N. ROCK RD. SUITE 204, BLDG. 2200
WICHITA, KS 67226
ZONED SF-5

SE. Cor., NE. 1/4, Sec. 1,
T27S, R1E, 6th P.M.

HINKLE'S ADDITION
ZONED G0

RESERVE A

RESERVE B

PEPPERWOOD VILLAGE ADDITION
ZONED CUP DP-73

PEPPERWOOD LAKE
ADDITION
ZONED CUP DP-73

FLOODWAY RESERVE

ALLENS FARM ADDITION
ZONED MF-13
BZA 27-85

UNPLATTED
THIRD
ADDITION
ZONED CUP DP-175

S. LINE NE. 1/4
UNPLATTED
LEEWOOD HOMES INC.
3500 N. ROCK RD. SUITE 204, BLDG. 2200
WICHITA, KS 67226
ZONED SF-5

SE. Cor., NE. 1/4, Sec. 1,
T27S, R1E, 6th P.M.

HINKLE'S ADDITION
ZONED G0

RESERVE A

RESERVE B

PEPPERWOOD VILLAGE ADDITION
ZONED CUP DP-73

PEPPERWOOD LAKE
ADDITION
ZONED CUP DP-73

FLOODWAY RESERVE

ALLENS FARM ADDITION
ZONED MF-13
BZA 27-85

UNPLATTED
THIRD
ADDITION
ZONED CUP DP-175

S. LINE NE. 1/4
UNPLATTED
LEEWOOD HOMES INC.
3500 N. ROCK RD. SUITE 204, BLDG. 2200
WICHITA, KS 67226
ZONED SF-5

SE. Cor., NE. 1/4, Sec. 1,
T27S, R1E, 6th P.M.

HINKLE'S ADDITION
ZONED G0

RESERVE A

RESERVE B

PEPPERWOOD VILLAGE ADDITION
ZONED CUP DP-73

PEPPERWOOD LAKE
ADDITION
ZONED CUP DP-73

FLOODWAY RESERVE

ALLENS FARM ADDITION
ZONED MF-13
BZA 27-85

UNPLATTED
THIRD
ADDITION
ZONED CUP DP-175

S. LINE NE. 1/4
UNPLATTED
LEEWOOD HOMES INC.
3500 N. ROCK RD. SUITE 204, BLDG. 2200
WICHITA, KS 67226
ZONED SF-5

SE. Cor., NE. 1/4, Sec. 1,
T27S, R1E, 6th P.M.

HINKLE'S ADDITION
ZONED G0

RESERVE A

RESERVE B

PEPPERWOOD VILLAGE ADDITION
ZONED CUP DP-73

PEPPERWOOD LAKE
ADDITION
ZONED CUP DP-73

FLOODWAY RESERVE

ALLENS FARM ADDITION
ZONED MF-13
BZA 27-85

UNPLATTED
THIRD
ADDITION
ZONED CUP DP-175

S. LINE NE. 1/4
UNPLATTED
LEEWOOD HOMES INC.
3500 N. ROCK RD. SUITE 204, BLDG. 2200
WICHITA, KS 67226
ZONED SF-5

SE. Cor., NE. 1/4, Sec. 1,
T27S, R1E, 6th P.M.

HINKLE'S ADDITION
ZONED G0

RESERVE A

RESERVE B

PEPPERWOOD VILLAGE ADDITION
ZONED CUP DP-73

PEPPERWOOD LAKE
ADDITION
ZONED CUP DP-73

FLOODWAY RESERVE

ALLENS FARM ADDITION
ZONED MF-13
BZA 27-85

UNPLATTED
THIRD
ADDITION
ZONED CUP DP-175

S. LINE NE. 1/4
UNPLATTED
LEEWOOD HOMES INC.
3500 N. ROCK RD. SUITE 204, BLDG. 2200
WICHITA, KS 67226
ZONED SF-5

SE. Cor., NE. 1/4, Sec. 1,
T27S, R1E, 6th P.M.

HINKLE'S ADDITION
ZONED G0

RESERVE A

RESERVE B

PEPPERWOOD VILLAGE ADDITION
ZONED CUP DP-73

PEPPERWOOD LAKE
ADDITION
ZONED CUP DP-73

FLOODWAY RESERVE

ALLENS FARM ADDITION
ZONED MF-13
BZA 27-85

UNPLATTED
THIRD
ADDITION
ZONED CUP DP-175

S. LINE NE. 1/4
UNPLATTED
LEEWOOD HOMES INC.
3500 N. ROCK RD. SUITE 204, BLDG. 2200
WICHITA, KS 67226
ZONED SF-5

SE. Cor., NE. 1/4, Sec. 1,
T27S, R1E, 6th P.M.

HINKLE'S ADDITION
ZONED G0

RESERVE A

RESERVE B

PEPPERWOOD VILLAGE ADDITION
ZONED CUP DP-73

PEPPERWOOD LAKE
ADDITION
ZONED CUP DP-73

FLOODWAY RESERVE

ALLENS FARM ADDITION
ZONED MF-13
BZA 27-85

UNPLATTED
THIRD
ADDITION
ZONED CUP DP-175

S. LINE NE. 1/4
UNPLATTED
LEEWOOD HOMES INC.
3500 N. ROCK RD. SUITE 204, BLDG. 2200
WICHITA, KS 67226
ZONED SF-5

SE. Cor., NE. 1/4, Sec. 1,
T27S, R1E, 6th P.M.

HINKLE'S ADDITION
ZONED G0

RESERVE A

RESERVE B

PEPPERWOOD VILLAGE ADDITION
ZONED CUP DP-73

PEPPERWOOD LAKE
ADDITION
ZONED CUP DP-73

FLOODWAY RESERVE

ALLENS FARM ADDITION
ZONED MF-13
BZA 27-85

UNPLATTED
THIRD
ADDITION
ZONED CUP DP-175

S. LINE NE. 1/4
UNPLATTED
LEEWOOD HOMES INC.
3500 N. ROCK RD. SUITE 204, BLDG. 2200
WICHITA, KS 67226
ZONED SF-5

SE. Cor., NE. 1/4, Sec. 1,
T27S, R1E, 6th P.M.

HINKLE'S ADDITION
ZONED G0

RESERVE A

RESERVE B

PEPPERWOOD VILLAGE ADDITION
ZONED CUP DP-73

PEPPERWOOD LAKE
ADDITION
ZONED CUP DP-73

FLOODWAY RESERVE

ALLENS FARM ADDITION
ZONED MF-13
BZA 27-85

UNPLATTED
THIRD
ADDITION
ZONED CUP DP-175

S. LINE NE. 1/4
UNPLATTED
LEEWOOD HOMES INC.
3500 N. ROCK RD. SUITE 204, BLDG. 2200
WICHITA, KS 67226
ZONED SF-5

SE. Cor., NE. 1/4, Sec. 1,
T27S, R1E, 6th P.M.

HINKLE'S ADDITION
ZONED G0

RESERVE A

RESERVE B

PEPPERWOOD VILLAGE ADDITION
ZONED CUP DP-73

PEPPERWOOD LAKE
ADDITION
ZONED CUP DP-73

FLOODWAY RESERVE

ALLENS FARM ADDITION
ZONED MF-13
BZA 27-85

UNPLATTED
THIRD
ADDITION
ZONED CUP DP-175

S. LINE NE. 1/4
UNPLATTED
LEEWOOD HOMES INC.
3500 N. ROCK RD. SUITE 204, BLDG. 2200
WICHITA, KS 67226
ZONED SF-5

SE. Cor., NE. 1/4, Sec. 1,
T27S, R1E, 6th P.M.

HINKLE'S ADDITION
ZONED G0

RESERVE A

RESERVE B

PEPPERWOOD VILLAGE ADDITION
ZONED CUP DP-73

PEPPERWOOD LAKE
ADDITION
ZONED CUP DP-73

FLOODWAY RESERVE

ALLENS FARM ADDITION
ZONED MF-13
BZA 27-85

UNPLATTED
THIRD
ADDITION
ZONED CUP DP-175

S. LINE NE. 1/4
UNPLATTED
LEEWOOD HOMES INC.
3500 N. ROCK RD. SUITE 204, BLDG. 2200
WICHITA, KS 67226
ZONED SF-5

SE. Cor., NE. 1/4, Sec. 1,
T27S, R1E, 6th P.M.

HINKLE'S ADDITION
ZONED G0

RESERVE A

RESERVE B

PEPPERWOOD VILLAGE ADDITION
ZONED CUP DP-73

PEPPERWOOD LAKE
ADDITION
ZONED CUP DP-73

FLOODWAY RESERVE