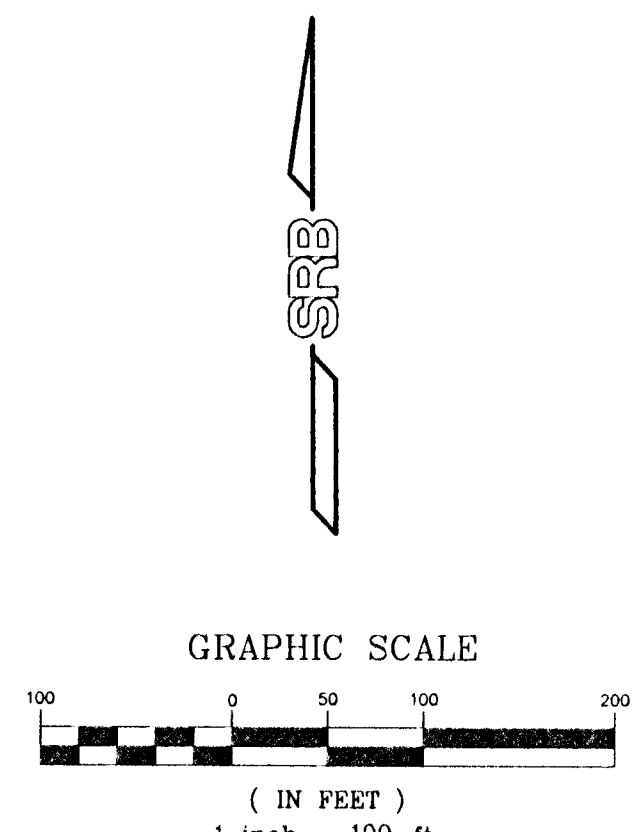
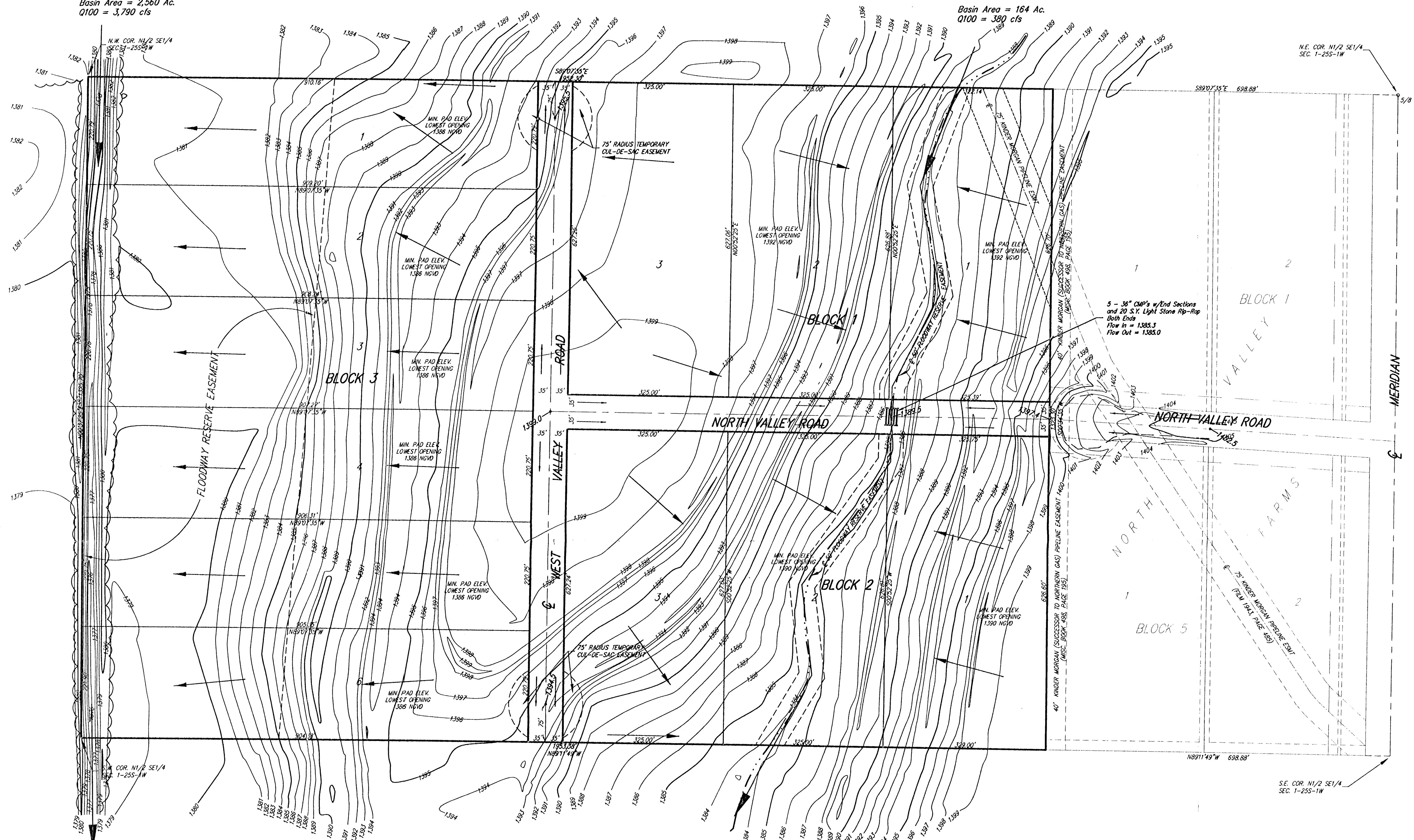


Basin Area = 2,560 Ac.
Q100 = 3,790 cfs

Basin Area = 164 Ac.
Q100 = 380 cfs



BENCH MARK:
804 IN H.P. 85° N. & 31° E.
W 1/4 COR. SEC. 6-25S-1E
ELEV. = 1403.27 NGVD

- LEGEND
- G = Gas line
 - W = Water line
 - SS = Sanitary Sewer line
 - SWS = Storm Water Sewer line
 - TELE. PED TELEPHONE PEDISTAL
 - ELEC. MTR ELECTRIC METER
 - WM WATER METER
 - POWER POLE
 - PL MKR GAS PIPELINE MARKER
 - MB MAIL BOX
 - ~~~~~ TREE DRIFLINE
 - DECIDUOUS TREE
 - ☼ CEDAR TREE

- PROPERTY CORNER LEGEND
- = 1/2" REBAR (FOUND)
 - = 3/4" IRON PIPE (FOUND)
 - = MASON PIN (FOUND)
 - = ARMSTRONG PIN (FOUND)

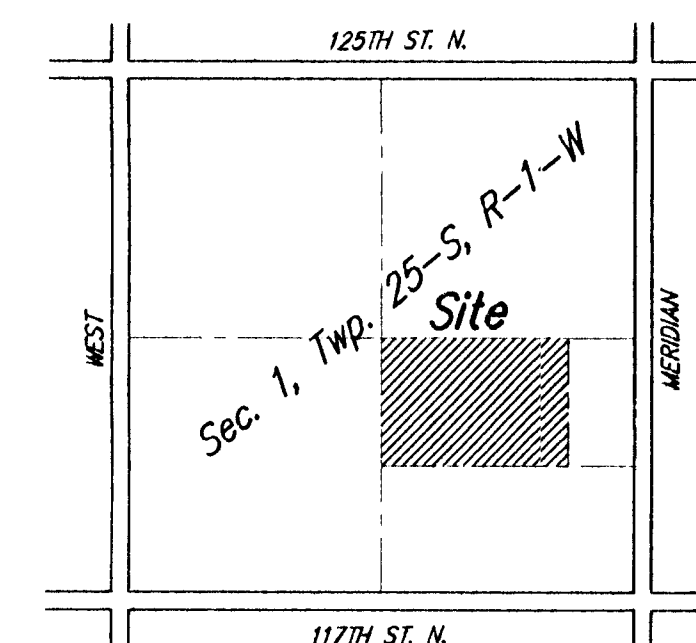
DRAINAGE CONCEPT

NORTH VALLEY FARMS

2ND ADDITION

SEDGWICK COUNTY, KANSAS

MINIMUM BUILDING PAD FOR LOWEST OPENING	
LOTS 1-2, BLOCK 1	1392
LOTS 1-2, BLOCK 2	1390
LOTS 1-6, BLOCK 3	1386



LOCATION MAP
NO SCALE

The N1/2 of the SE1/4 of Sec. 1, Twp. 25-S, R-1-W of the 6th P.M., Sedgwick County, Kansas, except the east 698.87 feet thereof.

GROSS AREA : 2,586,521.52 Sq. Ft.± / 59.38 Acres±

OWNER:
LEO DUBOIS
4729 W. 125TH ST. N.
SEDGMCK, KANSAS 67135
(316) 722-0182

SRB 924 NORTH MAIN WICHITA, KANSAS 67203
316-264-8008 FAX 264-4621
http://www.feist.com/~srb E-mail: srb@feist.com

SAVOY, RUGGLES & BOHM, P.A.
ENGINEERING & SURVEYING

July 31, 2001

DWG FILE: Drainage Plan.dwg
PROJECT NO. 01C01903P