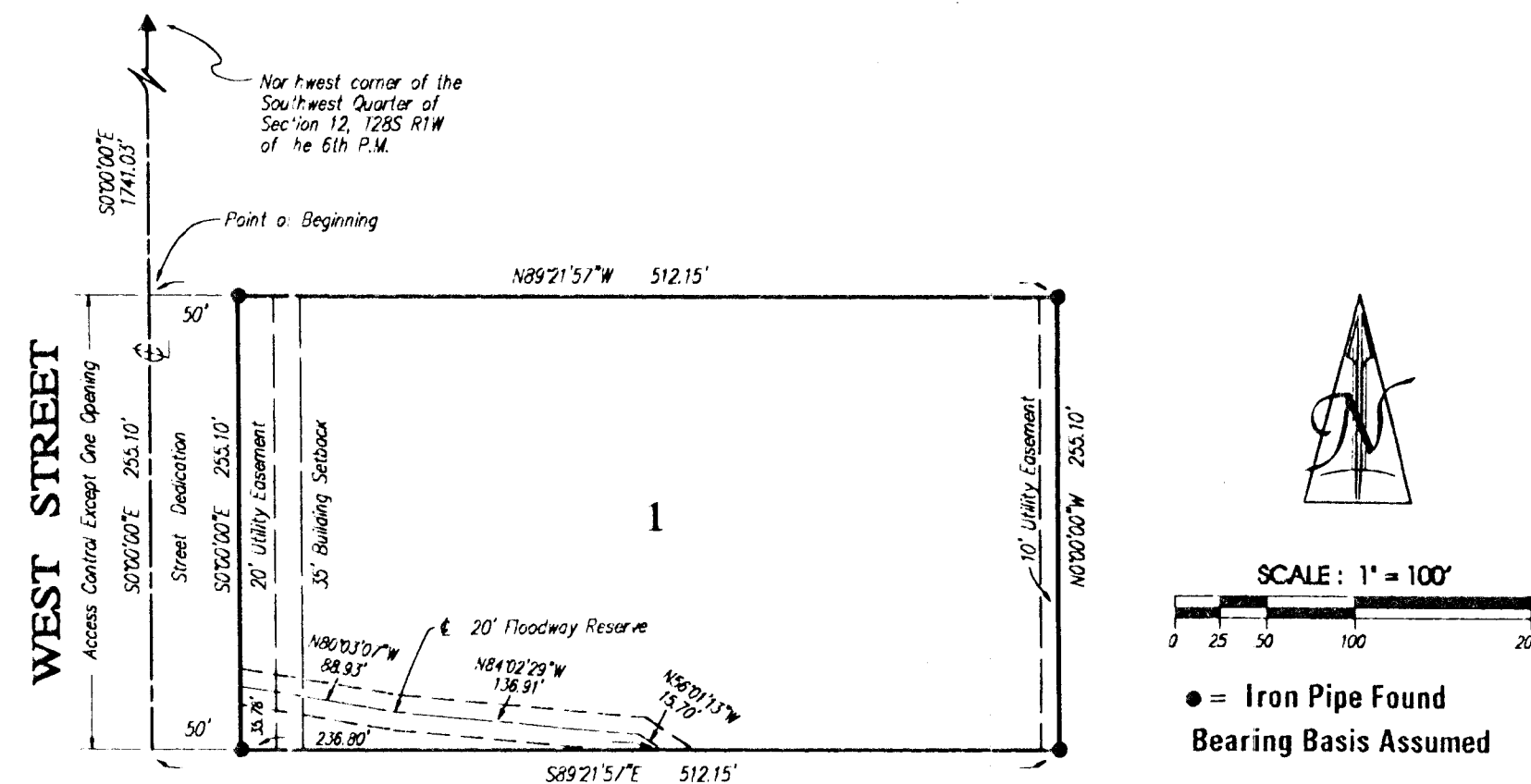


**FINAL PLAT OF
"PHAT AN TEMPLE"
AN ADDITION TO
SEDGWICK COUNTY, KANSAS
(SW1/4 OF SEC. 12, T28S, R1W OF THE 6TH P.M.)**



Know all men by these presents that the undersigned, owners of the land described in the Surveyor's Certificate, have caused the same to be surveyed and platted into a Lot and a Street, to be known as "PHAT AN TEMPLE", an Addition to Sedgwick County, Kansas. The Street is hereby granted to and for the use of the public. All abutters' rights of access to or from West Street, over and across the West line of Lot 1, are hereby granted to the appropriate governing body, provided however that Lot 1 shall have access to West Street at one location as determined by the appropriate engineer of the appropriate governing body. The Floodway Reserve shall be the responsibility of the owner(s) of Lot 1, "PHAT AN TEMPLE" until such time as the governing body exercising jurisdiction elects to assume the responsibility for maintenance and improvement of the drainage. A drainage plan has been developed for this plat and all drainage easements, rights-of-way, or reserves shall remain at established grades or as modified with the approval of the applicable City or County Engineer, and unobstructed to allow for the conveyance of stormwater.

Minh Tran

Lisa Tran

Thuthuy T. Huynh

State of Kansas)
Sedgwick County) ss

This instrument was acknowledged before me this _____ day of _____, 2000, by Minh Tran and Lisa Tran.

Margaret Unruh, Notary Public

My Commission Expires: _____

State of Kansas)
Sedgwick County) ss

This instrument was acknowledged before me this _____ day of _____, 2000, by Thuthuy Y. Huynh.

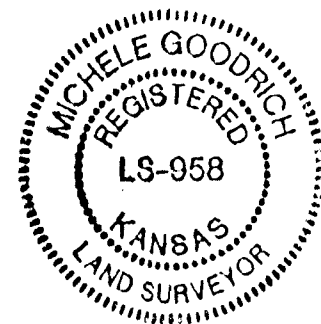
Margaret Unruh, Notary Public

My Commission Expires: _____

State of Kansas)
Sedgwick County) ss

Terra Tech Land Surveying, Inc., a corporation registered and authorized to practice Land Surveying in the State of Kansas, hereby certifies that it has surveyed and platted "PHAT AN TEMPLE", an Addition to Sedgwick County, Kansas, and the accompanying plat is a true and correct exhibit of such survey described as:

Beginning at a point 1741.03 feet South of the Northwest corner of the Southwest Quarter of Section 12, Township 28 South, Range 1 West of the Sixth Principal Meridian, Sedgwick County, Kansas; thence continuing South, along the West line of said Southwest Quarter having an assumed bearing of South 0°00'00" East, a distance of 255.10 feet; thence South 89°21'57" East, a distance of 512.15 feet; thence North 0°00'00" West, a distance of 255.10 feet; thence North 89°21'57" West, a distance of 512.15 feet to the Point of Beginning.



TERRA TECH LAND SURVEYING, INC.

Michele Goodrich, LS #958
Date: January 19, 2000

This plat of "PHAT AN TEMPLE", an Addition to Sedgwick County, Kansas, has been submitted to and approved by the Wichita-Sedgwick County Metropolitan Area Planning Commission, Wichita, Kansas.

Dated this _____ day of _____, 2000.

WICHITA-SEDGWICK COUNTY
METROPOLITAN AREA PLANNING COMMISSION

Francis S. Garofalo, Chairman

Marvin S. Krout, Secretary

This plat approved and all dedications shown hereon are accepted by the City Council of the City of Wichita, Kansas, this _____ day of _____, 2000.

WICHITA CITY COUNCIL

Bob Knight, Mayor

Pat Burnett, City Clerk

Reviewed in accordance with K.S.A. 58-2005 on this _____ day of _____, 2000.

Tricia L. Robello, LS#1248
Deputy County Surveyor
Sedgwick County, Kansas

This plat approved and all dedications shown hereon, if any, accepted by the Board of County Commissioners of Sedgwick County, Kansas, this _____ day of _____, 2000.

COUNTY COMMISSIONERS

Thomas G. Winters, Chairman

Attest: _____
James Alford, County Clerk

~~Cendant Mortgage, mortgagee on the land being platted herein, does hereby consent to this plat of "PHAT AN TEMPLE", an Addition to Sedgwick County, Kansas.~~

~~CENDANT MORTGAGE~~

~~State of New Jersey)
County) ss~~

~~The foregoing instrument was acknowledged before me this _____ day of _____, 2000 by _____ of Cendant Mortgage, on behalf of the mortgage company.~~

~~_____
Notary Public~~

~~My Commission Expires: _____~~

Entered on transfer record this _____ day of _____, 2000.

James Alford, County Clerk

State of Kansas)
Sedgwick County) ss

This is to certify that this instrument was filed for record in the Register of Deeds Office, at _____ o'clock _____ M. on the _____ day of _____, 2000.

Bill Meek, Register of Deeds

Linda Kizzire, Deputy

TERRA TECH
LAND SURVEYING INC.

Wichita, Kansas 239 North Ohio
67214-3933
(316) 267-0744 / 267-2348
Fax (316) 267-2736