

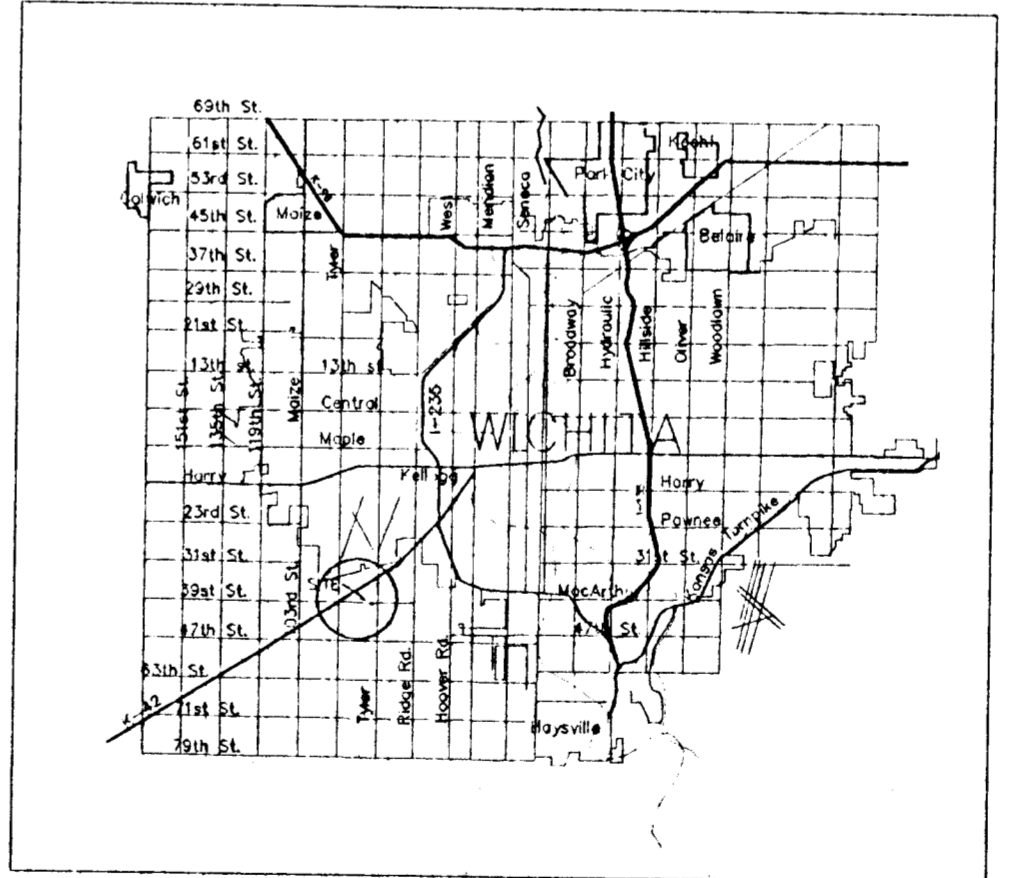
PRELIMINARY PLAT PERRY GEORGE ADDITION TO SEDGWICK COUNTY, KANSAS

OWNER: Perry & Rachel George
2109 S. Parkridge
Wichita, KS 67209
ZONING: RR

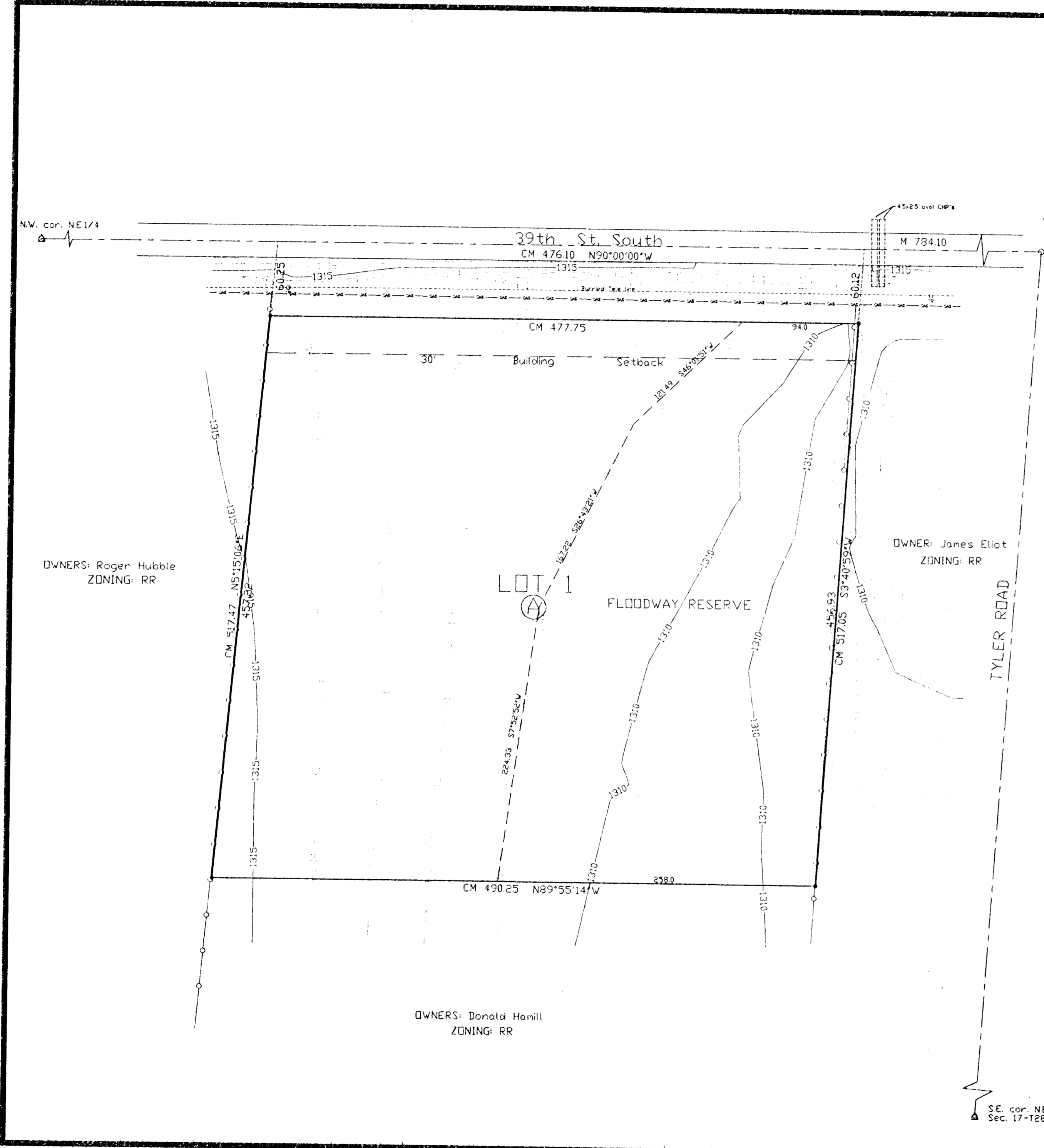
LEGEND

- - set 5/8" rebar & "Armstrong" cap
- △ - iron in thimble over stone
- ▲ - found 3/4" iron pipe over stone
- - found 3/4" iron rebar
- M - measured distance
- P - plot distance
- CM - calculated from measured distance
- - property line
- - - - - center line
- - - - - easement line
- - - - - setback line
- - - - - underground utility
- - fence
- - cable TV riser
- - telephone riser
- - fire hydrant
- - elec. transformer
- - air conditioner
- - power pole
- - manhole
- - light pole
- - gas meter
- - gas valve
- - water meter
- - water valve

LOCATION MAP



SCALE 1"=60'



**ARMSTRONG
LAND SURVEY, P.A.**

250 N. MATHEWSON
WICHITA, KANSAS
PH - (316) 263-0082
Fax - (316) 263-0092