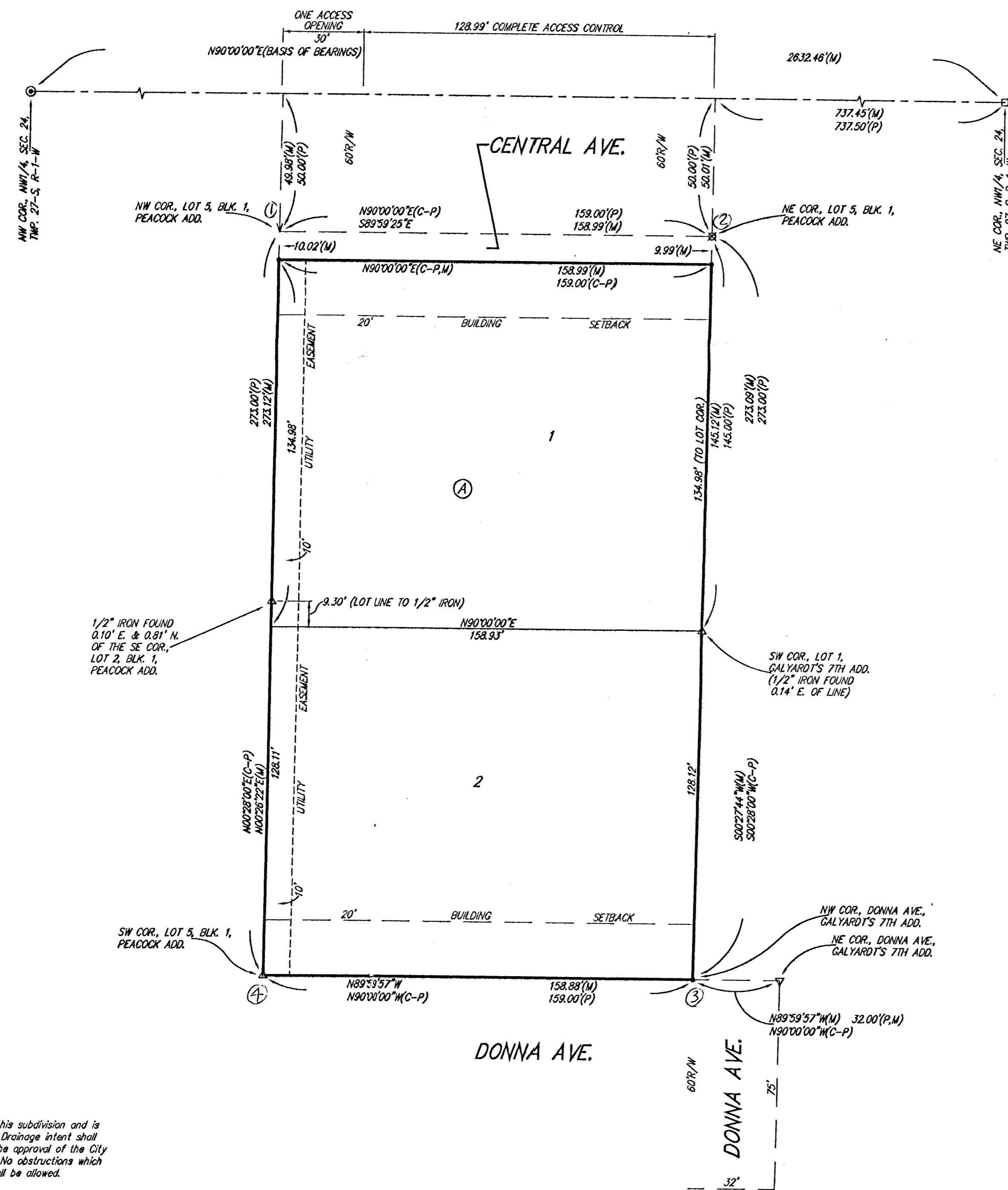
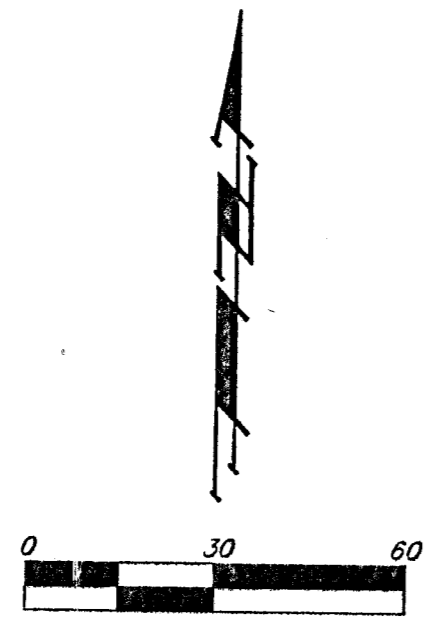


# PEACOCK 2ND ADDITION WICHITA, SEDGWICK COUNTY, KANSAS

(M) = MEASURED  
(P) = PLATTED  
(C-P) = CALCULATED PER PLATTED INFO.

• = #4 REBAR W/ "BAUGHMAN" CAP (SET)  
○ = #4 REBAR IN THIMBLE (FOUND)  
□ = # THIMBLE CAP NOTHING IN THIMBLE (FOUND)  
△ = 3/4" IRON (FOUND)  
∇ = 1/2" NOTCH (FOUND)  
⊞ = 7/8" NAIL (FOUND)  
▽ = 1/2" IRON (FOUND)



**NOTE:**  
A drainage plan has been developed for this subdivision and is on file with the City of Wichita, Kansas. Drainage intent shall remain as depicted or as modified with the approval of the City Engineer of the City of Wichita, Kansas. No obstructions which impede the flow of this drainage plan shall be allowed.

State of Kansas) SS We, Baughman Company, P.A., Surveyors in Sedgwick County) do hereby certify that we have surveyed and platted "WOODS EDGE", an Addition to Wichita, Sedgwick County, Kansas and that the accompanying plat is a true and correct exhibit of the property surveyed, described as and being a replat of all of Lot 5, Block 1, Peacock Addition to Wichita, Kansas.

All being situated in the NW1/4 of Sec. 24, Twp. 27-S, R-1-W of the 6th P.M., Sedgwick County, Kansas.

Existing public easements and dedications being vacated by virtue of K.S.A. 12-512(b).

Baughman Company, P.A.

*Michael A. Conrey*  
Michael G. Conrey  
13-071  
10-2003, Surveyor

This plat of "PEACOCK 2ND ADDITION", Wichita, Sedgwick County, Kansas has been submitted to and approved by the Wichita-Sedgwick County Metropolitan Area Planning Commission, Wichita, Kansas.

Dated this \_\_\_\_\_ day of \_\_\_\_\_, 2003.  
Wichita-Sedgwick County Metropolitan Area Planning Commission

\_\_\_\_\_, Chair  
Bernard A. Hentzen

\_\_\_\_\_, Secretary  
Dale Miller

This plat approved and all dedications shown hereon accepted by the City Council of the City of Wichita, Kansas, this \_\_\_\_\_ day of \_\_\_\_\_, 2003.

At the direction of the City Council

\_\_\_\_\_, City Manager  
Chris Cherches

\_\_\_\_\_, City Clerk  
Pat Graves

Know all men by these presents that we, the undersigned, have caused the land in the surveyors certificate to be platted into Lots, a Block, and a Street, to be known as "PEACOCK 2ND ADDITION", Wichita, Sedgwick County, Kansas. The street is hereby dedicated to and for the use of the public. All abutters rights of access to or from Central Ave. over and across the north line of Lot 1, Block A are hereby granted to the City of Wichita, Kansas provided, however, that said Lot 1 shall have access to Central Ave. at one location over the west 30.00 feet of the north line of said Lot 1, as shall be determined by the City Engineer of the City of Wichita, Kansas.

*Don Klausmeyer*      *Marilyn Klausmeyer*  
Don Klausmeyer      Marilyn Klausmeyer

*Lorena R. Wilson*  
Lorena R. Wilson

*Kelly R. Phipps*  
Kelly R. Phipps

Reviewed in accordance with K.S.A. 58-2005 on this \_\_\_\_\_ day of \_\_\_\_\_, 2003.

*Tricia L. Robello, L.S. #1246*  
Deputy County Surveyor  
Sedgwick County, Kansas

State of Kansas) SS The foregoing instrument acknowledged before me, this 19 day of February, 2003, by Don Klausmeyer and Marilyn Klausmeyer, husband and wife.

SHARON ZENNER  
Notary Public-State of Kansas  
My Appl. Exp. 9-9-2008  
*Sharon Zenner*, Notary Public  
My App't. Exp. 9-9-06

Entered on transfer record this \_\_\_\_\_ day of \_\_\_\_\_, 2003.

\_\_\_\_\_, County Clerk  
Don Brace

State of Kansas) SS The foregoing instrument acknowledged before me, this 19 day of February, 2003, by Lorena R. Wilson, a single person.

SHARON ZENNER  
Notary Public-State of Kansas  
My Appl. Exp. 9-9-2008  
*Sharon Zenner*, Notary Public  
My App't. Exp. 9-9-06

State of Kansas) SS This is to certify that this plat has been filed for record in the office of the Register of Deeds, this \_\_\_\_\_ day of \_\_\_\_\_, 2003 at \_\_\_\_\_ o'clock \_\_\_\_\_ M; and is duly recorded.

\_\_\_\_\_, Register of Deeds  
Bill Meek

State of Kansas) SS The foregoing instrument acknowledged before me, this 19 day of February, 2003, by Kelly R. Phipps, a single person.

SHARON ZENNER  
Notary Public-State of Kansas  
My Appl. Exp. 9-9-2008  
*Sharon Zenner*, Notary Public  
My App't. Exp. 9-9-06

\_\_\_\_\_, Deputy  
Linda Kizzire