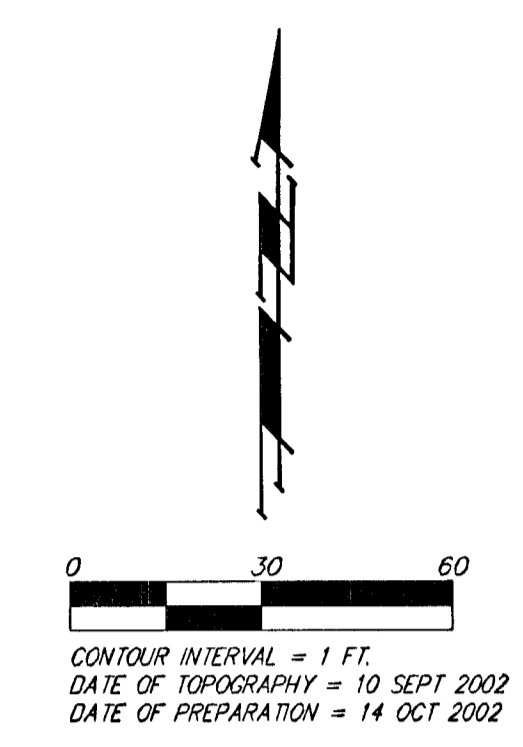


UTILITY PLAN

PEACOCK 2ND ADDITION

WICHITA, SEDGWICK COUNTY, KANSAS



LEGAL DESCRIPTION:
A replat of all of Lot 5, Block 1, Peacock Addition to Wichita, Kansas.

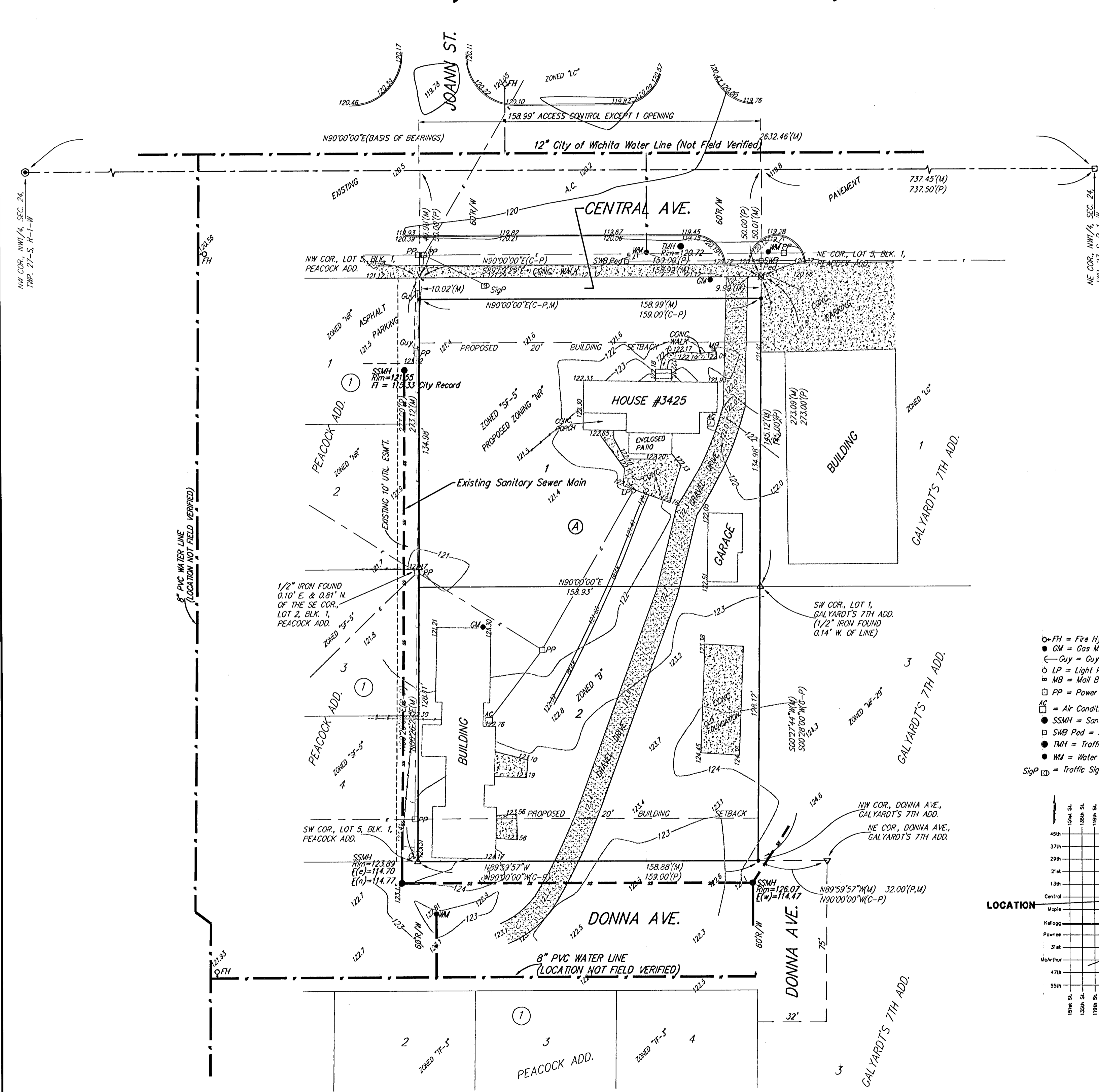
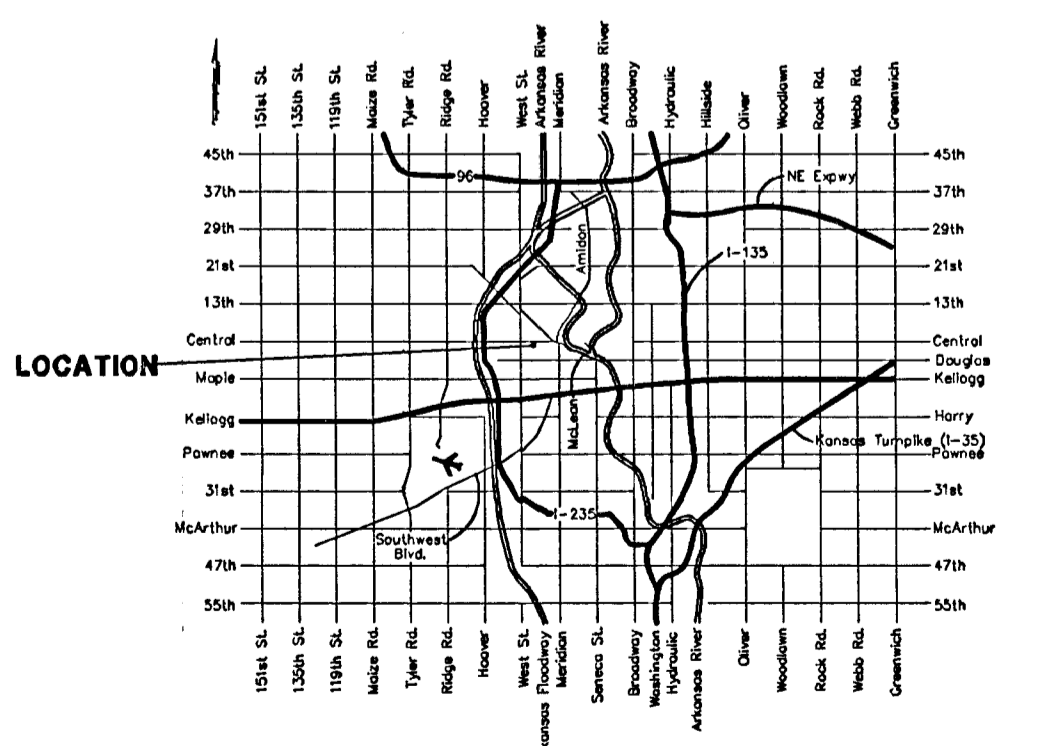
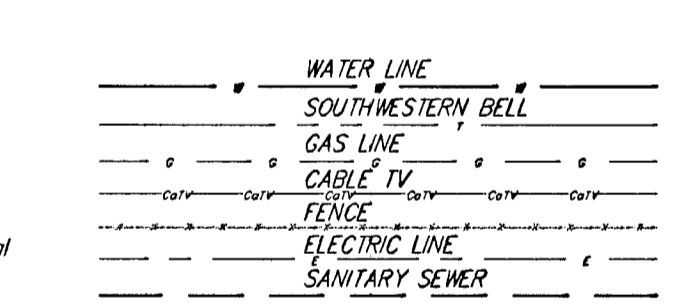
Owner:
Klausmeyer Construction
Attn: Dan Klausmeyer
10008 W. York
Wichita, Kansas 67215
Ph. (316) 554-0001

Benchmark:
Central Ave. & Knight St.,
cut on top of curb
15.5' E. of & Knight St.
81' S. of & Central Ave.
Elev = 120.19 City Datum
1307.59 NGVD29

(M) = MEASURED
(P) = PLATTED
(C-P) = CALCULATED PER PLATTED INFO.

- = #4 REBAR W/ "BAUGHMAN" CAP (SET)
- ⊙ = #4 REBAR IN THIMBLE (FOUND)
- = THIMBLE CAP, NOTHING IN THIMBLE (FOUND)
- △ = 3/4" IRON (FOUND)
- ∇ = 1/2" NOTCH (FOUND)
- ⊗ = "P-K" NAIL (FOUND)
- ▽ = 1/2" IRON (FOUND)

- FH = Fire Hydrant
- GM = Gas Meter
- Guy = Guy Anchor
- LP = Light Pole
- ⊞ MB = Mail Box
- PP = Power Pole
- ⊞ = Air Conditioning Unit
- SSMH = Sanitary Sewer Manhole
- ⊞ SSB Pad = Southwestern Bell Pedestal
- TMH = Traffic Manhole
- MM = Water Meter
- SigP ⊞ = Traffic Signal Pole



05 NOV 2002

BAUGHMAN COMPANY P. A.
ENGINEERING, SURVEYING, & PLANNING
316-262-7271 • 315 ELLIS • WICHITA, KANSAS 67211
F:\PLAT\PEACOCK 2ND ADD\DWG\PEACOCK2C.DWG-MCC