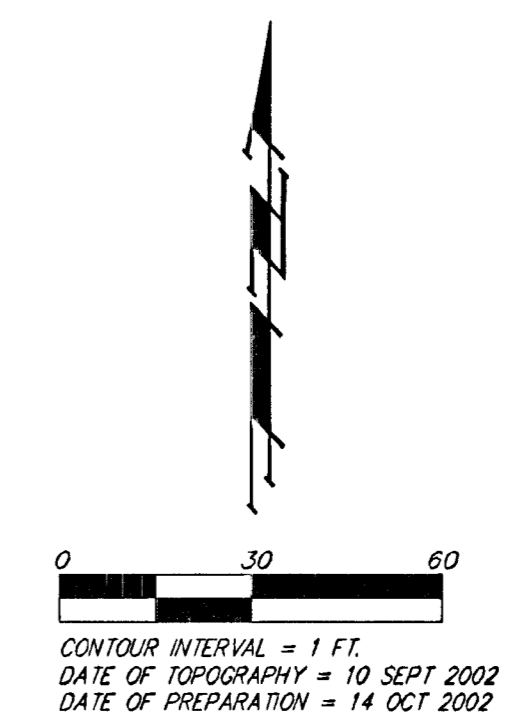
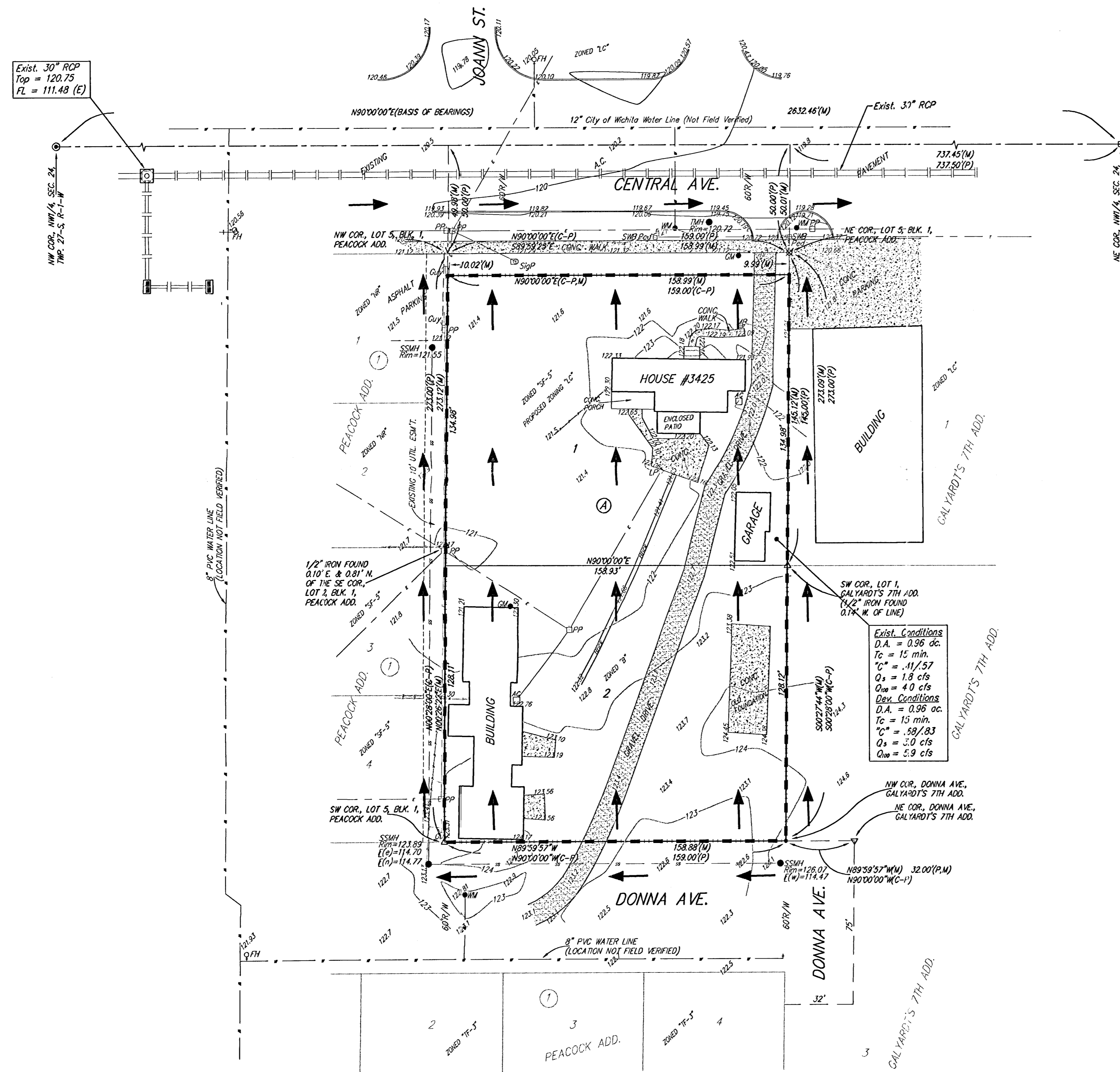


# DRAINAGE CONCEPT PEACOCK 2ND ADDITION WICHITA, SEDGWICK COUNTY, KANSAS



**LEGAL DESCRIPTION:**  
 A replat of all of Lot 5, Block 1, Peacock Addition to Wichita, Kansas.

**Owner:**  
 Klausmeyer Construction  
 Attn: Don Klausmeyer  
 10008 W. York  
 Wichita, Kansas 67215  
 Ph. (316) 554-0001

**Benchmark:**  
 Central Ave. & Knight St.  
 "I" cut on Top of Curb  
 15.5' E. of & Knight St.  
 81' S. of & Central Ave.  
 Elev. = 120.19 City Datum  
 1307.59 NGVD29

- (M) = MEASURED  
 (P) = PLATTED  
 (C-P) = CALCULATED PER PLATTED INFO.
- = #4 REBAR W/ "BAUGHMAN" CAP (SET)
  - = #4 REBAR IN THIMBLE (FOUND)
  - = 6" THIMBLE CAP, NOTHING IN THIMBLE (FOUND)
  - △ = 3/4" IRON (FOUND)
  - ∇ = 1/2" IRON (FOUND)
  - ⊗ = 2" x 4" WALK (FOUND)
  - ▽ = 1/2" IRON (FOUND)

