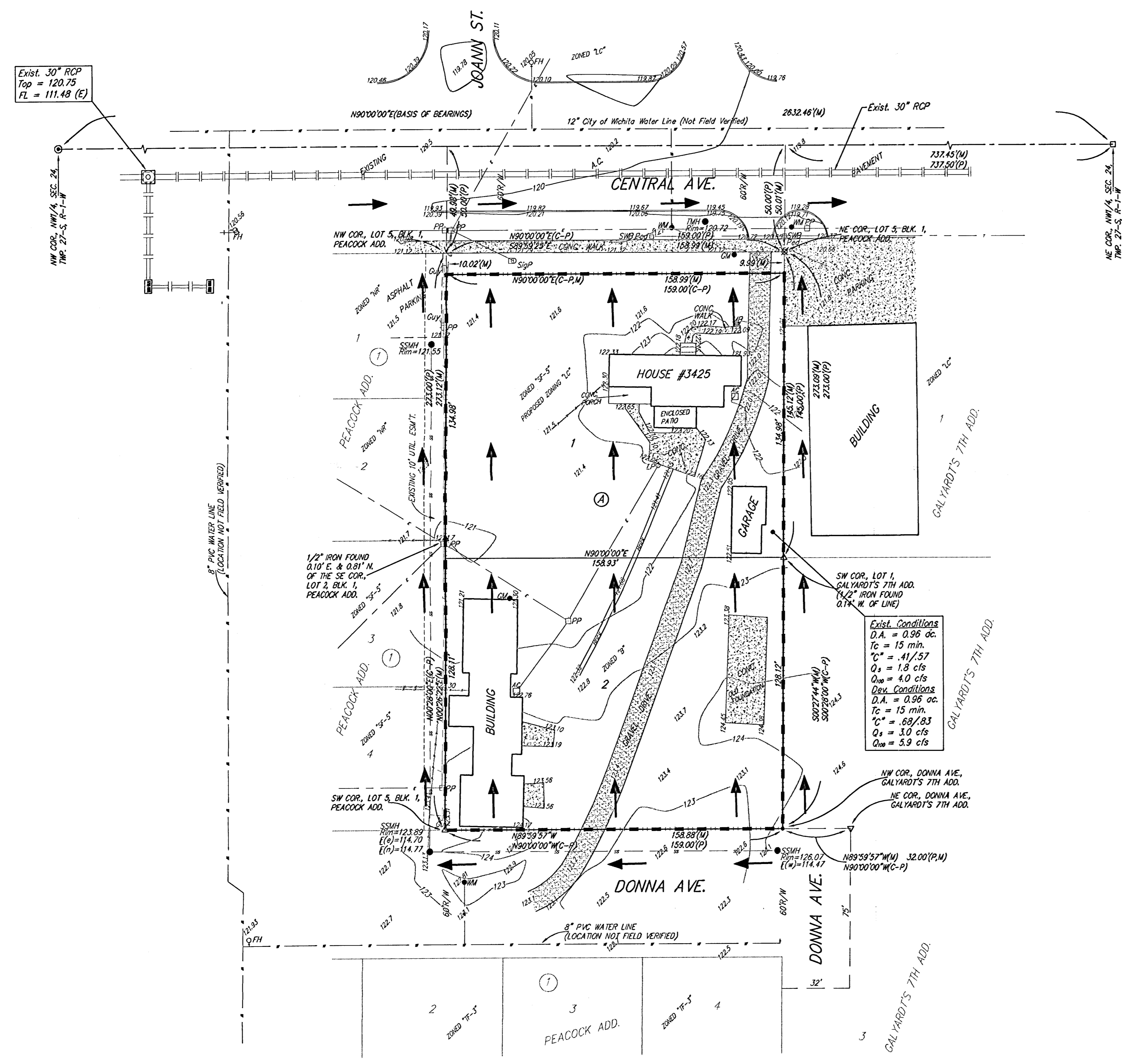
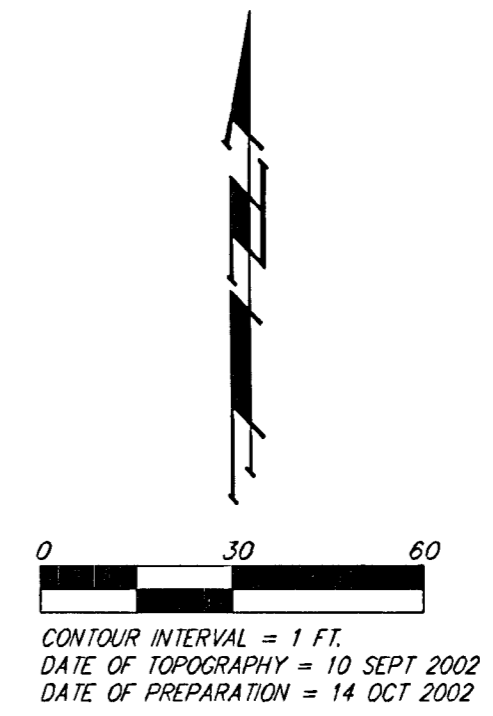


DRAINAGE PLAN PEACOCK 2ND ADDITION WICHITA, SEDGWICK COUNTY, KANSAS

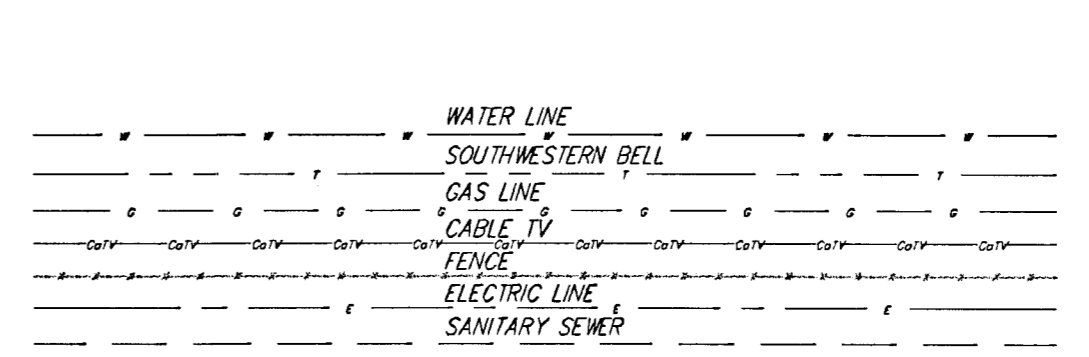


LEGAL DESCRIPTION:
A replat of all of Lot 5, Block 1, Peacock Addition to Wichita, Kansas.

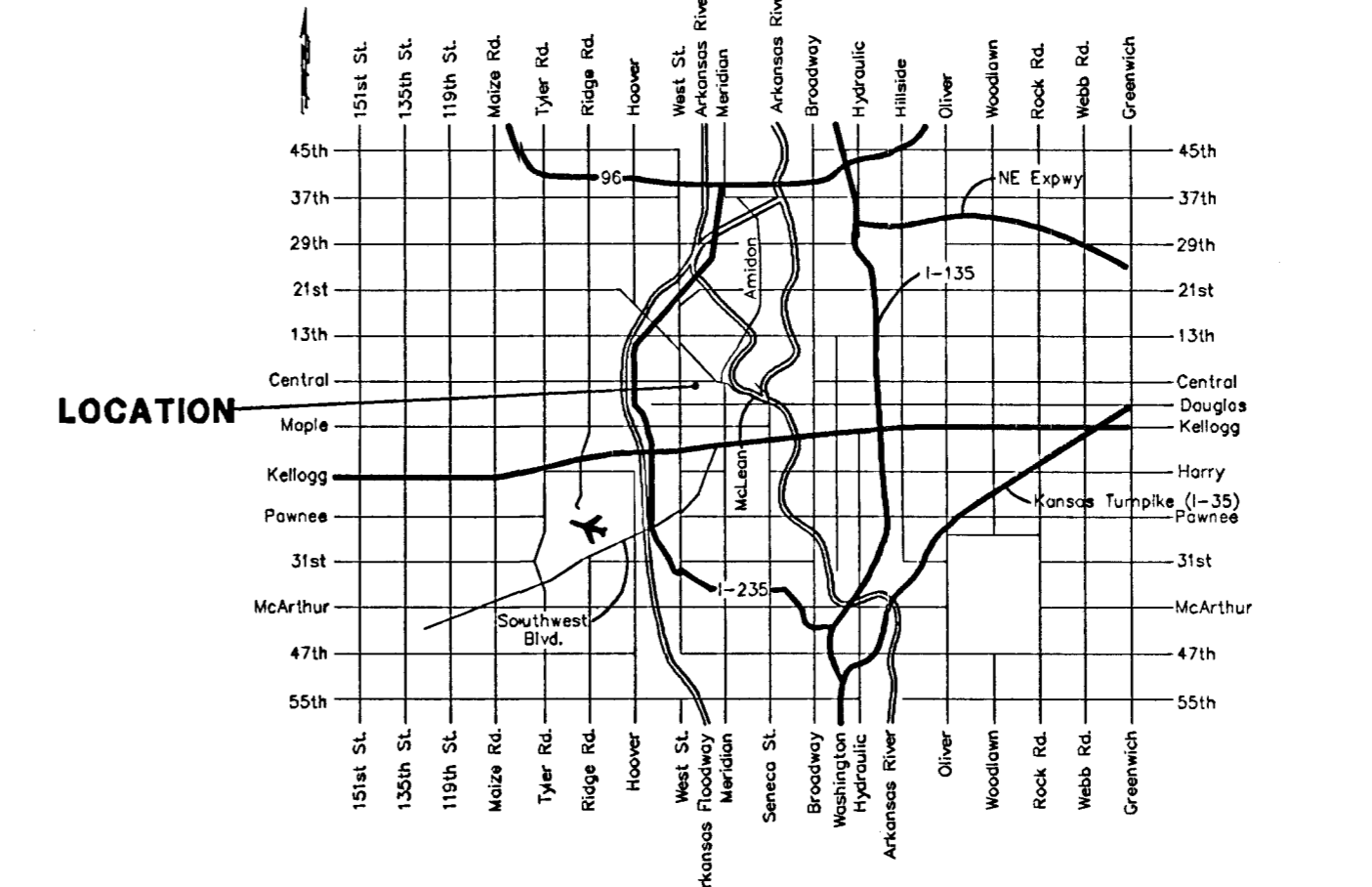
Owner:
Klausmeyer Construction
Attn: Don Klausmeyer
1000B W. York
Wichita, Kansas 67215
Ph. (316) 554-0001

Benchmark:
Central Ave. & Knight St.
"C" cut on Top of Curb
15.5' E. of & Knight St.
81' S. of & Central Ave.
Elev. = 120.19 City Datum
1307.59 NGVD29

- (M) = MEASURED
(P) = PLATTED
(C-P) = CALCULATED PER PLATTED INFO.
- = #4 REBAR W/ "BAUGHMAN" CAP (SET)
 - ⊙ = #4 REBAR IN THIMBLE (FOUND)
 - ⊠ = # THIMBLE CAP, NOTHING IN THIMBLE (FOUND)
 - △ = 3/4" IRON (FOUND)
 - ▽ = 1/2" NOTCH (FOUND)
 - ⊗ = "P-K" NAIL (FOUND)
 - ∇ = 1/2" IRON (FOUND)



- FH = Fire Hydrant
 - GM = Gas Meter
 - Guy = Guy Anchor
 - LP = Light Pole
 - ⊞ MB = Manhole
 - ⊞ PP = Power Pole
 - ⊞ AC = Air Conditioning Unit
 - ⊞ SSMH = Sanitary Sewer Manhole
 - ⊞ SWB Ped = Southwestern Bell Pedestal
 - ⊞ TMH = Traffic Manhole
 - WM = Water Meter
- SigP ⊞ = Traffic Signal Pole



VICINITY MAP