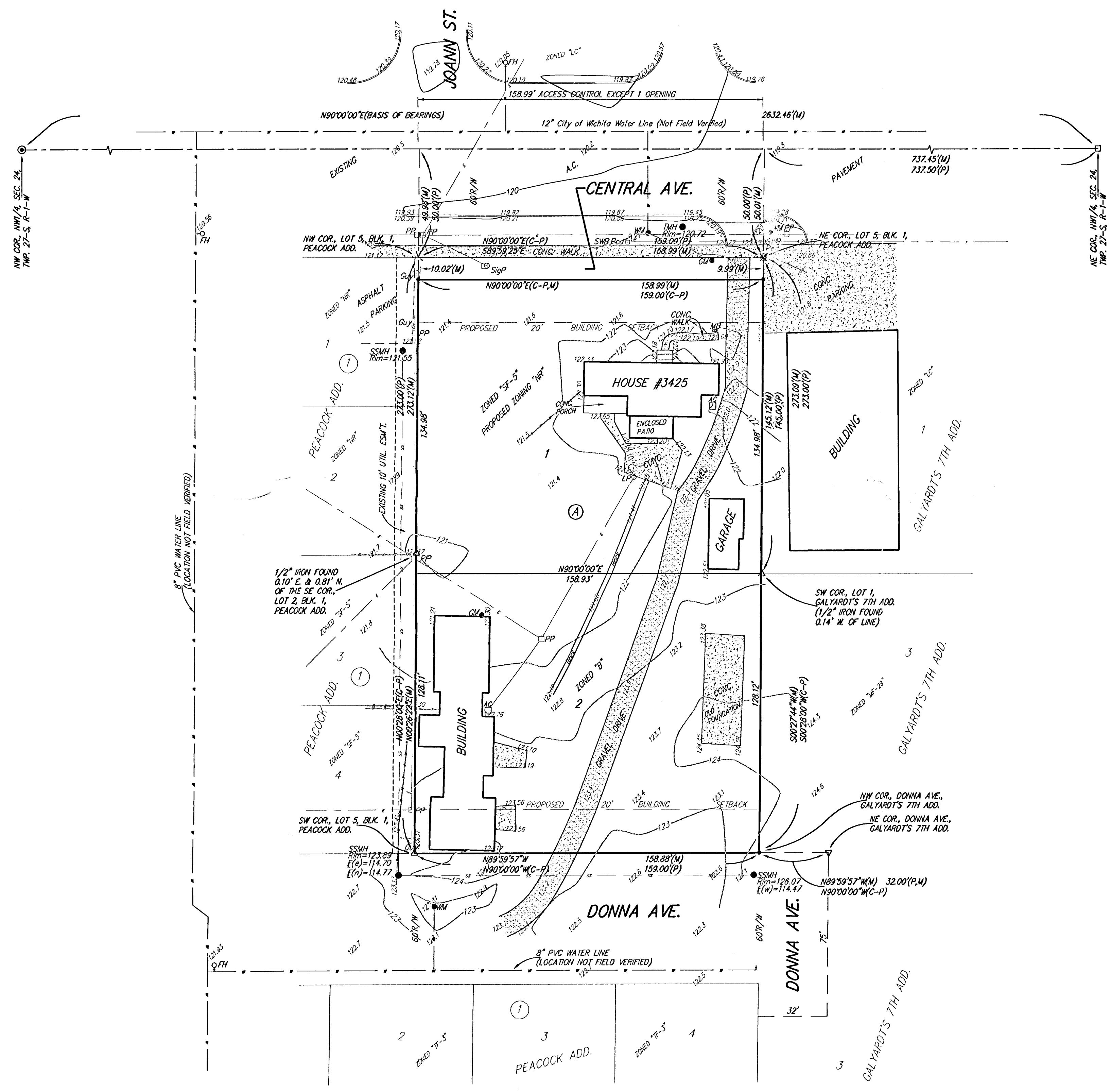
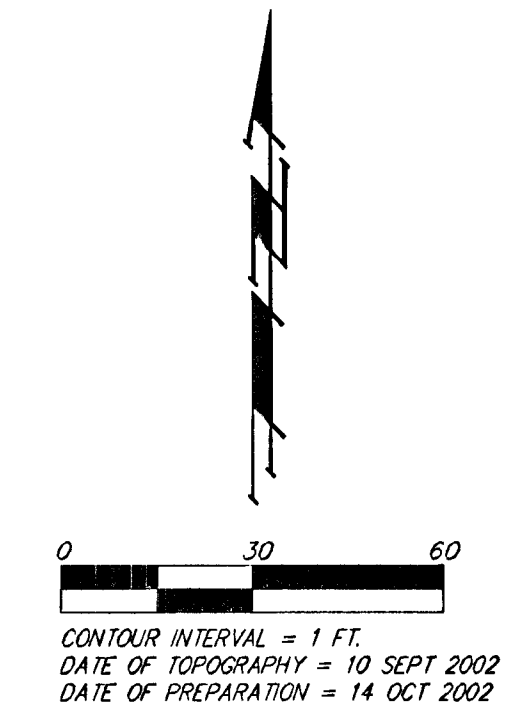


PRELIMINARY PLAT
PEACOCK 2ND ADDITION
 WICHITA, SEDGWICK COUNTY, KANSAS



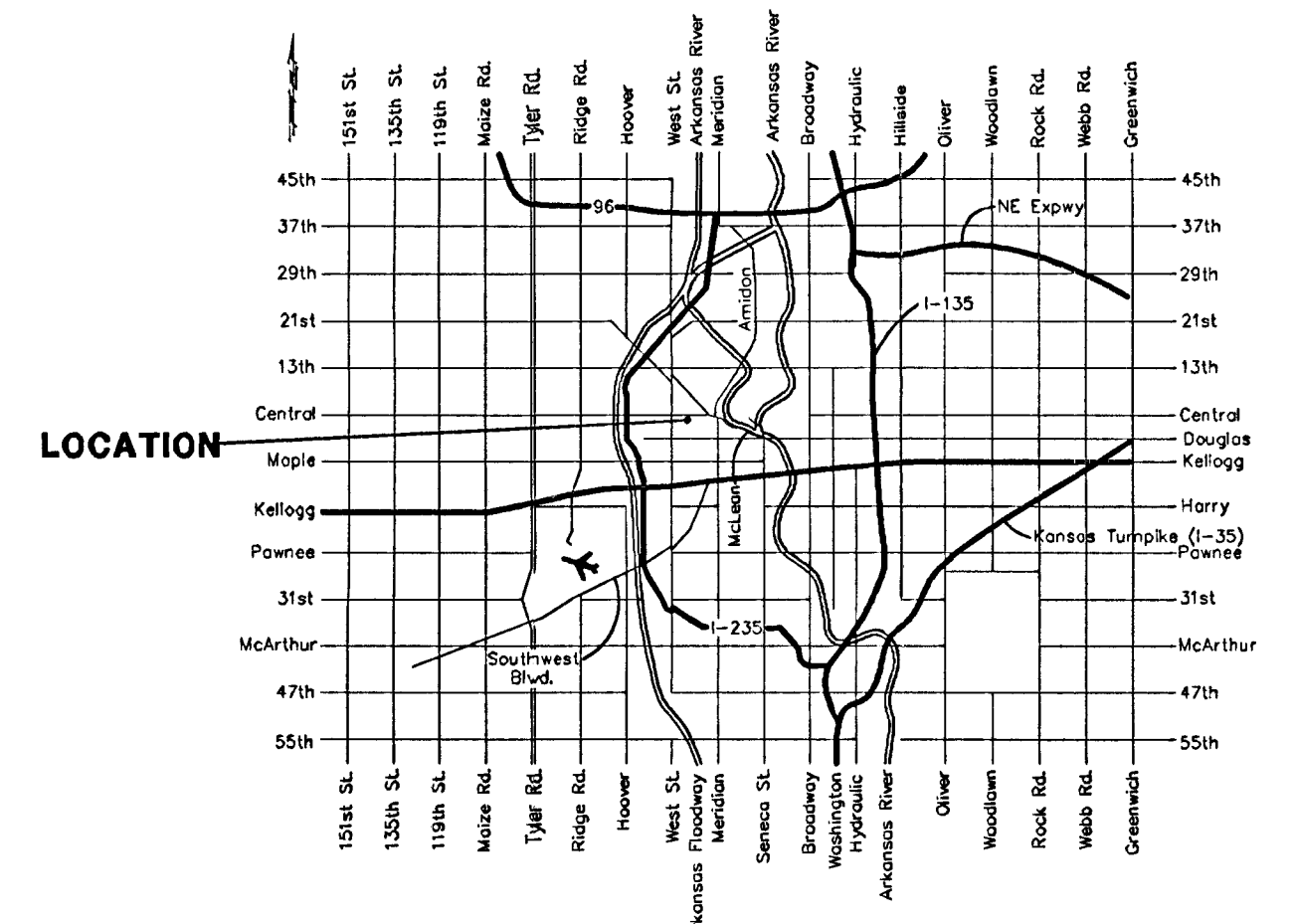
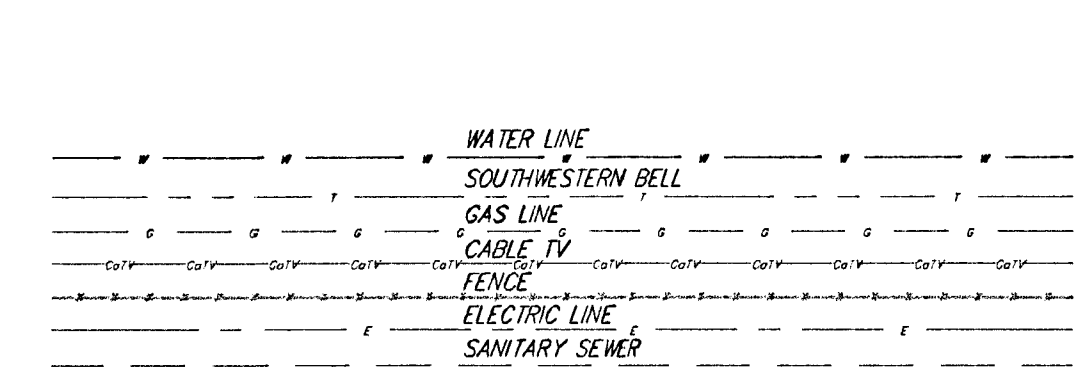
LEGAL DESCRIPTION:
 A replat of all of Lot 5, Block 1, Peacock Addition to Wichita, Kansas.

Owner:
 Klausmeyer Construction
 Attn: Don Klausmeyer
 10008 W. York
 Wichita, Kansas 67215
 Ph. (316) 554-0001

Benchmark:
 Central Ave. & Knight St.
 "13" cut on top of curb
 15.5' E. of & Knight St.
 81' S. of Central Ave.
 Elev. = 120.19 City Datum
 1307.59 NG1029

(M) = MEASURED
 (P) = PLATTED
 (C-P) = CALCULATED PER PLATTED INFO.

- #1 REBAR W/ "BAUGHMAN" CAP (SET)
- ⊙ #4 REBAR IN THIMBLE (FOUND)
- ⊖ # THIMBLE CAP, NOTHING IN THIMBLE (FOUND)
- △ 3/4" IRON (FOUND)
- ∇ 1/2" IRON (FOUND)
- ⊕ 1/2" IRON FOUND
- ⊗ P-1" IRON (FOUND)
- ⊘ 1/2" IRON (FOUND)



VICINITY MAP