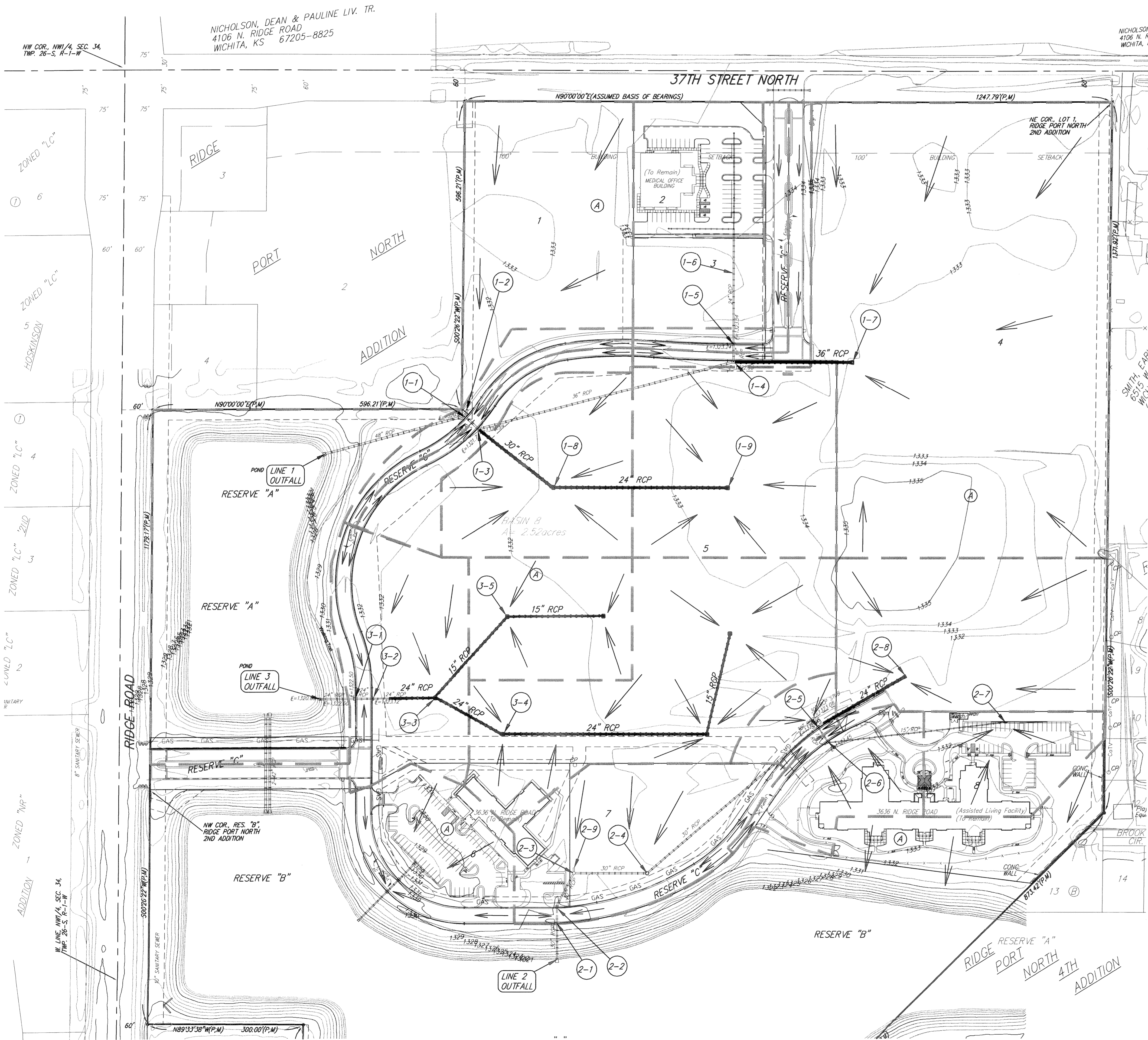
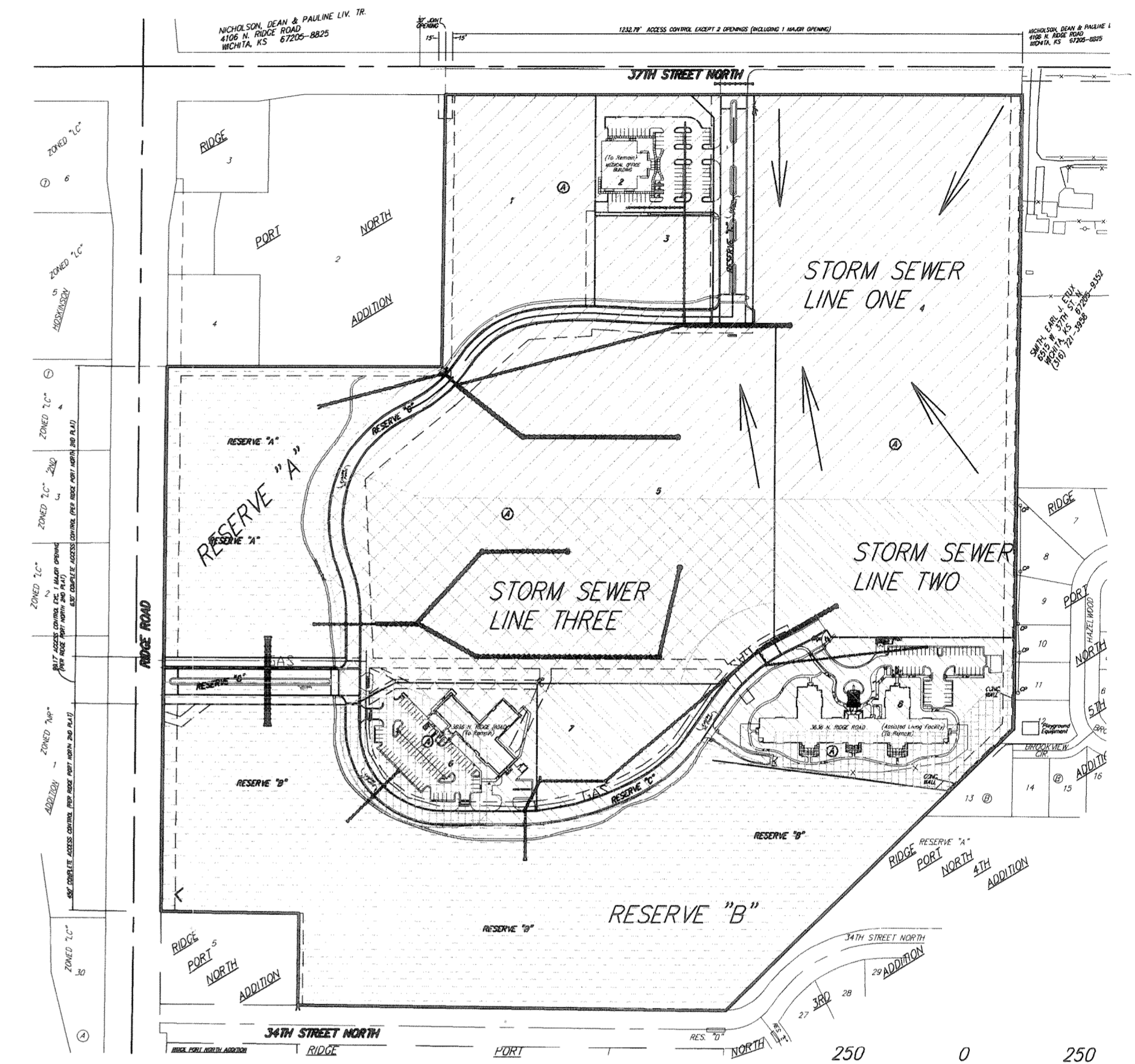


# EXISTING STORM SEWER USE & EXPANSION RIDGE PORT NORTH 6TH

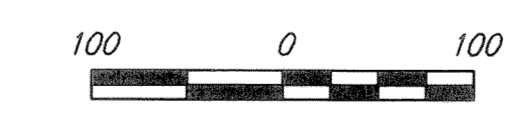
AN ADD. TO WICHITA, SEDGWICK COUNTY, KANSAS  
PRIOR LOT 1, RESERVES A&B OF RIDGE PORT 2ND ADD.



## MAJOR DRAINAGE BASINS



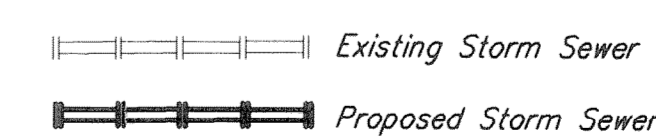
Line Num.	Line ID	Line Size (in)	Total Area (ac)	Down Stream Line No.	Drainage Area (ac.)	Runoff Coeff.	Tc (min)	Total Runoff (cfs)	Capacity (cfs)	Invert (ft)	HGL (ft)	Grnd/Rim Elev (ft.)	Cover (ft)
1-1	Ex. Line 1 (North)	48	26.19	1-1	0.66	0.85	17.7	90.06	152.39	1320.64	1323.45	1330.92	6.28
1-2		30	3.48	1-1	3.48	0.85	15	13.76	21.58	1320.74	1323.49	1325.00	1.76
1-3		48	22.06	1-1	0.90	0.85	17.6	75.03	150.00	1320.59	1324.74	1330.99	6.40
1-4		36	15.28	1-3	0.75	0.85	16.4	51.61	23.13	1322.35	1328.63	1331.42	6.07
1-5		30	3.29	1-5	0.74	0.85	16.2	19.92	1322.43	1328.91	1331.64	6.71	
1-6		24	2.55	1-5	2.55	0.85	15	10.09	16.2	1323.38	1330.41	1333.00	5.68
1-7	Proposed Pipe	36	11.24	1-4	11.24	0.72	15	37.65	29.80	1323.32	1331.30	1333.00	7.62
1-8	Proposed Pipe	30	5.87	1-3	2.52	0.85	16.7	22.16	25.89	1322.67	1326.02	1333.00	7.83
1-9	Proposed Pipe	24	3.35	1-8	3.35	0.85	15	13.25	14.32	1324.48	1327.75	1333.00	6.52
2-1	Ex. Line 2 (South)	30	9.38	Outfall	0.30	0.85	18.6	31.77	38.85	1319.50	1321.38	1330.40	8.40
2-2		30	9.08	2-1	0.80	0.85	18.5	30.74	41.08	1319.91	1321.76	1330.40	7.99
2-3		30	8.28	2-2	0.15	0.85	18.4	27.98	40.88	1320.73	1322.50	1330.90	7.67
2-4		30	7.23	2-3	0.50	0.85	17.9	24.47	17.28	1321.08	1323.83	1332.80	9.22
2-5		30	6.73	2-4	0.50	0.85	16.4	23.56	18.71	1322.08	1325.53	1330.31	5.73
2-6		18	2.73	2-5	1.37	0.85	16.3	10.41	10.65	1323.45	1326.42	1330.31	5.36
2-7		15	1.36	2-6	1.36	0.85	15	5.38	5.76	1326.20	1329.55	1330.30	2.85
2-8	Proposed Pipe	24	3.5	2-5	3.50	0.72	15	11.73	10.18	1322.46	1326.43	1332.00	7.54
2-9		24	0.9	2-3	0.90	0.85	15	3.56	22.65	1322.07	1322.74	1333.50	9.43
3-1	Ex. Line 3 (West)	24	8.71	Outfall	0.50	0.85	16.8	32.83	43.43	1322.50	1324.40	1330.65	6.15
3-2		24	8.21	2-1	1.50	0.85	16.7	30.99	30.26	1323.12	1325.00	1330.75	5.63
3-3	Proposed Pipe	24	6.71	2-2	0.50	0.85	16.4	25.51	22.63	1324.40	1326.75	1332.00	5.60
3-4	Proposed Pipe	24	4.51	2-3	4.51	0.85	15	17.84	15.98	1327.59	1331.01	1334.50	4.91
3-5	Proposed Pipe	15	1.7	2-3	1.70	0.85	15	6.72	7.90	1326.35	1328.84	1335.50	7.90



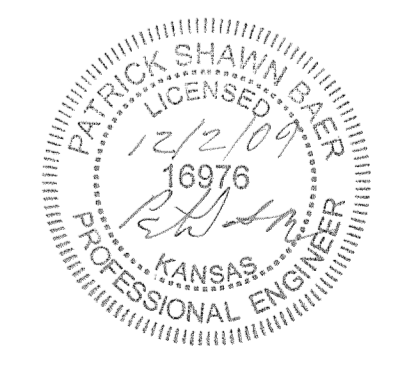
BENCHMARK-1:  
"C" TOP OF INLET SE OF SE COR.  
LOT 2 RIDGE PORT NORTH  
ELEV.=1330.89 (NAVD88)

BENCHMARK-2:  
"C" TOP OF CURB SOUTH END OF  
SOUTH MEDIAN AT ENTRANCE ON  
37TH STREET NORTH  
ELEV.=1333.39 (NAVD88)

BENCHMARK-3:  
"C" TOP OF CURB WEST END OF  
ENTRANCE TO RETIREMENT COMPLEX  
ELEV.=1331.62 (NAVD88)



NOTE: This site lies within Zone X based on FEMA FIRM panel 335 of 700 for Community Kit #20173C for Sedgwick County, Kansas, effective February 2, 2007. Zone X are areas determined to be outside the 0.2% annual chance of floodplain.



## STORM SEWER EXPANSION RIDGE PORT NORTH SIXTH ADDITION

3 December 2009  
Baughman Company, P.A.  
315 Ellis St. Wichita, KS 67211 P 316-262-7271 F 316-262-0149  
ENGINEERING | SURVEYING | PLANNING | LANDSCAPE ARCHITECTURE