

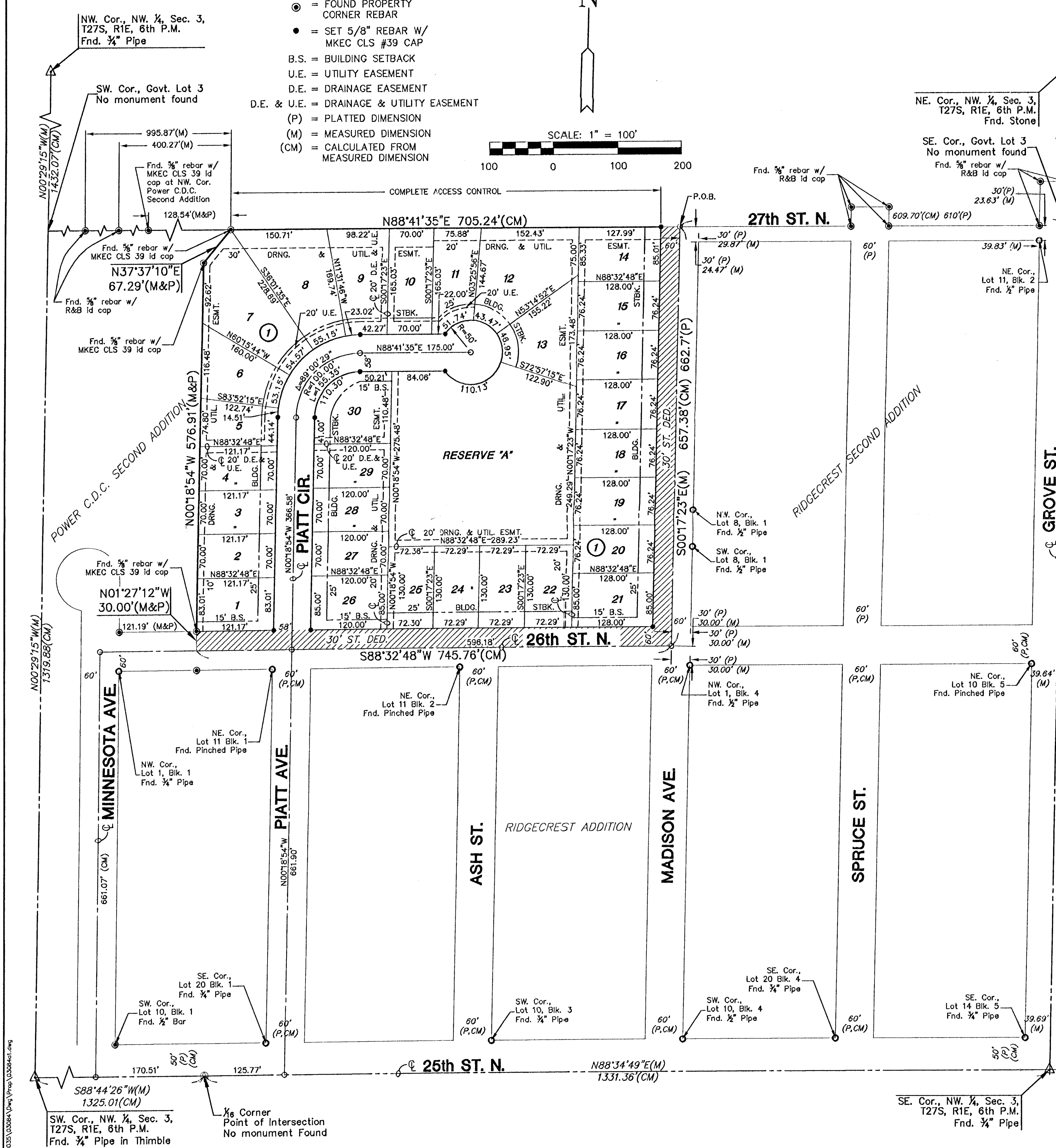
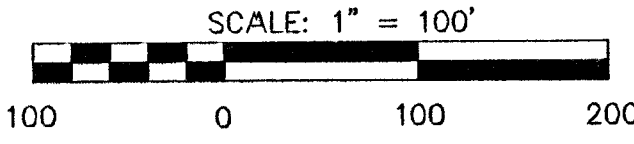
# FINAL PLAT

## POWER C.D.C. THIRD ADDITION

### AN ADDITION TO WICHITA, SEDGWICK COUNTY, KANSAS

#### LEGEND

- △ = SECTION CORNER MONUMENT FOUND
- = FOUND PROPERTY CORNER PIPE
- = FOUND PROPERTY CORNER REBAR
- = SET 5/8" REBAR W/ MKEC CLS #39 CAP
- B.S. = BUILDING SETBACK
- U.E. = UTILITY EASEMENT
- D.E. = DRAINAGE EASEMENT
- U.E. & D.E. = DRAINAGE & UTILITY EASEMENT
- (P) = PLATTED DIMENSION
- (M) = MEASURED DIMENSION
- (CM) = CALCULATED FROM MEASURED DIMENSION

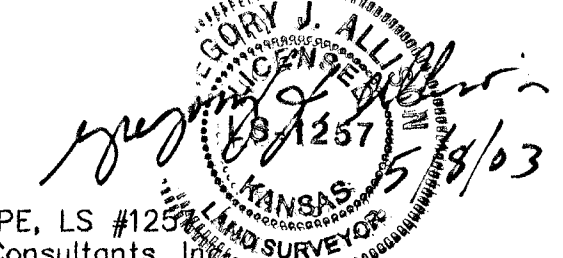


I, Gregory J. Allison, a Registered Land Surveyor in Kansas, do hereby certify that I have been in responsible charge of surveying and platting of "POWER C.D.C. THIRD ADDITION", an addition to Wichita, Sedgwick County, Kansas, into Lots, a Block, a Reserve, and Streets, the same being accurately set forth in the accompanying plat and described herein:

A tract of land lying in the Northwest Quarter, Section 3, Township 27 South, Range 1 East, of the 6th Principal Meridian, Wichita, Sedgwick County, Kansas; said tract being more particularly described as follows:

COMMENCING at the Southeast corner of the said Northwest Quarter, thence on a Kansas South Zone Grid Bearing of N00°17'23"W, 1318.43 feet to the Southeast Corner of Government Lot 3; thence along the South line of said Government Lot 3, S88°41'35"W, 609.70 feet to the POINT OF BEGINNING, said point being the intersection of Madison Avenue and 27th Street North as dedicated by Ridgcrest Second Addition an addition to Wichita, Kansas; thence along the West line of said Ridgcrest Second Addition, S00°17'23"E, 657.38 feet to the intersection of Madison Avenue and 26th Street North, as dedicated by Ridgcrest Addition an addition to Wichita, Kansas; thence along the Northerly line of said Ridgcrest Addition, S88°32'48"W, 745.76 feet to a Southeastly corner of Power C.D.C. Second Addition an Addition to Wichita, Kansas; thence along the East line of said Power C.D.C. Second Addition, N01°27'12"W, 30.00 feet to the Southeast corner of Lot 23, Block 1, of said Power C.D.C. Second Addition; thence continuing along said East line N00°18'54"W, 576.91 feet; thence continuing along said East line N37°37'10"E, 67.29 feet to the Northeast corner of said Power C.D.C. Second Addition; thence along said South line of Government Lot 3, N88°41'35"E, 705.24 feet to the POINT OF BEGINNING.

I hereby certify that the details of this plat are correct to the best of my knowledge and belief this 21st day of May, 2003.



Gregory J. Allison, PE, LS #1254  
 MKEC Engineering Consultants, Inc.  
 411 North Webb Road  
 Wichita, Kansas 67206

Know all men by these presents that we the undersigned property owners of the land above set forth in the Registered Land Surveyor's Certificate, have caused the same to be surveyed and platted into Lots, a Block, a Reserve and Streets the same to be known as "POWER C.D.C. THIRD ADDITION", an addition to Wichita, Sedgwick County, Kansas. Easements for the construction and maintenance of public utilities, and drainage, as indicated on the accompanying plat are hereby granted to the public. The streets are hereby dedicated to and for the use of the public. Reserve "A" is platted for open space and shall be owned and maintained by the homeowners association. A drainage plan has been developed for this plat and all drainage easements, rights-of-way, or reserves shall remain at established grades or as modified with the approval of the applicable City or County Engineer, and unobstructed to allow for the conveyance of storm water. All abutters right of access to or from 27th St. North over and across the North line of "POWER C.D.C. THIRD ADDITION", are hereby granted to the appropriate governing body, as indicated on the face of the plat.

City of Wichita, Kansas  
 At the direction of the City Council.

STATE OF KANSAS )  
 ) ss.  
 SEDGWICK COUNTY)

BE IT REMEMBERED, that on this \_\_\_\_\_ day of \_\_\_\_\_, 2003, before me the undersigned, a Notary Public in and for the County and State aforesaid, came \_\_\_\_\_, City of Wichita, Kansas, at the direction of the City Council, to me personally known to be the same person who executed the foregoing instrument of writing and duly acknowledged the execution of the same.

IN WITNESS WHEREOF, I have hereunto set my hand and affixed my official seal, the day and year last above written.

\_\_\_\_\_, Notary Public

My appointment expires:

This plat of "POWER C.D.C. THIRD ADDITION", has been submitted to and approved by the Wichita-Sedgwick County Metropolitan Area Planning Commission, Wichita, Kansas.  
 Dated this \_\_\_\_\_ day of \_\_\_\_\_, 2003.

WICHITA-SEDGWICK COUNTY METROPOLITAN AREA PLANNING COMMISSION

\_\_\_\_\_, Chair  
 Bernard A. Hentzen, Chair

\_\_\_\_\_, Secretary  
 Dale Miller, Secretary

This plat approved and all dedications shown thereon, if any, accepted by the City Council of the City of Wichita, Kansas, this \_\_\_\_\_ day of \_\_\_\_\_, 2003.

At the direction of the City Council.

\_\_\_\_\_, City Clerk  
 Pat Graves, City Clerk

Entered on transfer record this \_\_\_\_\_ day of \_\_\_\_\_, 2003.

\_\_\_\_\_, County Clerk  
 Don Brace, County Clerk

STATE OF KANSAS )  
 ) ss.  
 SEDGWICK COUNTY)

This is to certify that this instrument was filed for record in the Register of Deeds office this \_\_\_\_\_ day of \_\_\_\_\_, 2003 at \_\_\_\_\_ o'clock M; and duly recorded.

\_\_\_\_\_, Register of Deeds  
 Bill Meek, Register of Deeds

\_\_\_\_\_, Deputy  
 Linda Kizzire, Deputy

Reviewed in accordance with K.S.A. 58-2005 on this \_\_\_\_\_ day of \_\_\_\_\_, 2003.

\_\_\_\_\_, Deputy County Surveyor

Tricia L. Robello, LS #1246  
 Deputy County Surveyor  
 Sedgwick County, Kansas