

PRAIRIE CROSSROADS UNITED METHODIST CHURCH ADDITION

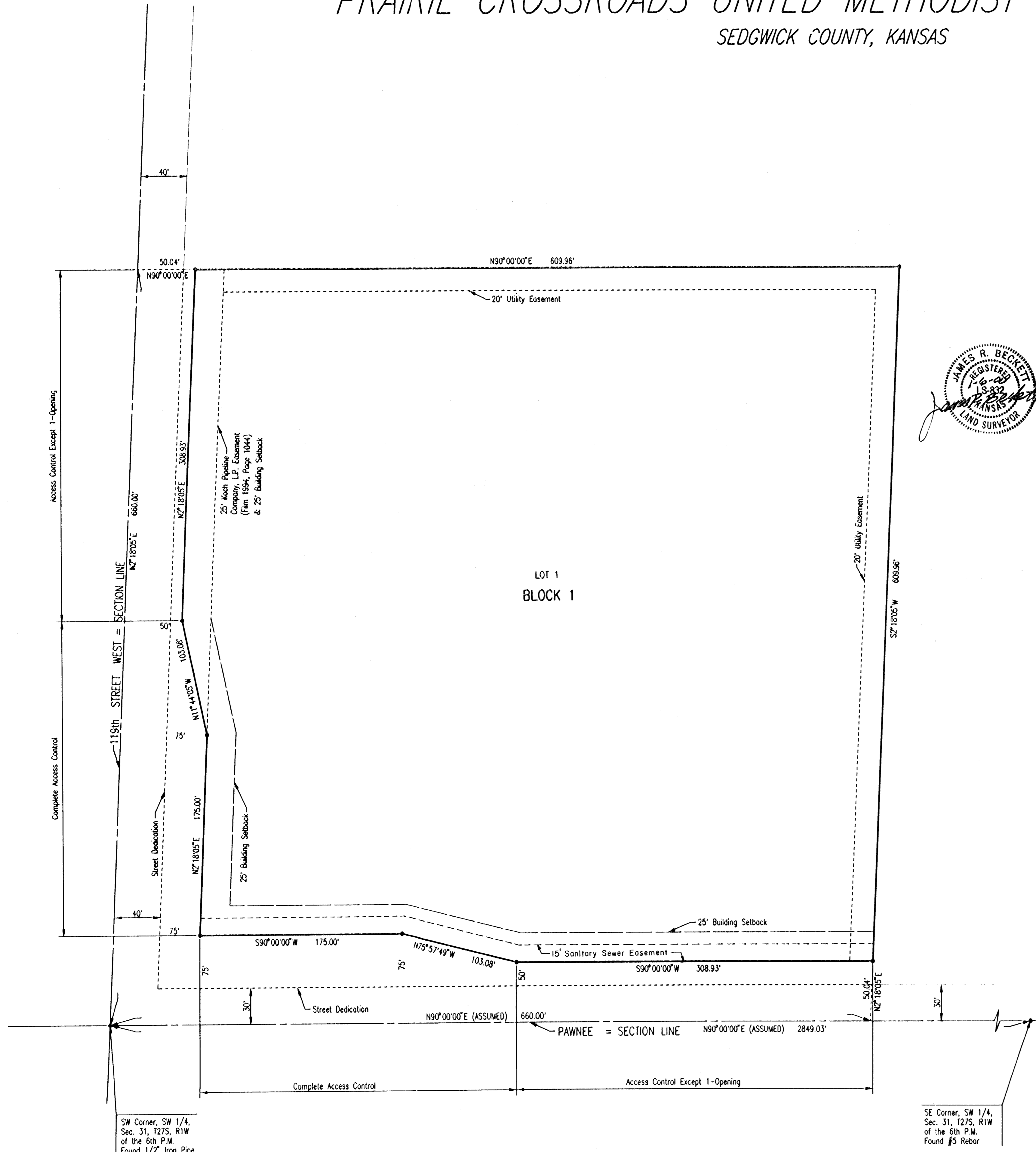
SEDGWICK COUNTY, KANSAS

SCALE: 1" = 50'

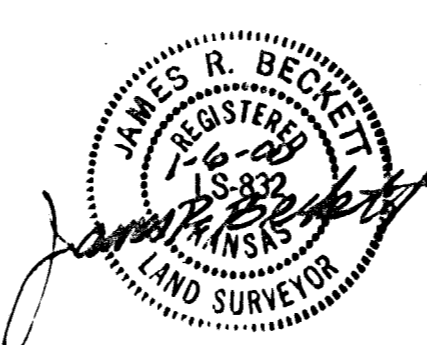
• = IRON SET UNLESS NOTED OTHERWISE

B.M.: CITY OF WICHITA BRASS BENCH MARK DISC SET IN CONCRETE 40' EAST AND 30' NORTH OF CENTERLINE OF 119TH STREET WEST AND PANNEE. 59.5' NORTH OF P.P. AT SOUTHEAST CORNER INTERSECTION. 158.8' N/E OF CENTER EAST CONCRETE HEADWALL ON CULVERT UNDER 119TH STREET. DLK 1983

ELEV. = 148.68 CITY DATUM
ELEV. = 1336.08 N.G.V.D. (29)



STATE OF KANSAS }
COUNTY OF SEDGWICK } SS



WE, PROFESSIONAL ENGINEERING CONSULTANTS, P.A., ENGINEERS AND SURVEYORS IN AFORESAID STATE AND COUNTY, DO HEREBY CERTIFY THAT ON THIS 6th DAY OF JANUARY, 2000, WE HAVE SURVEYED AND PLATTED PRAIRIE CROSSROADS UNITED METHODIST CHURCH ADDITION, SEDGWICK COUNTY, KANSAS, INTO A LOT AND A BLOCK THE SAME BEING DESCRIBED AS FOLLOWS:

THE SOUTH 660.00 FEET OF THE WEST 660.00 FEET OF THE SOUTHWEST QUARTER OF SECTION 31, TOWNSHIP 27 SOUTH, RANGE 1 WEST OF THE 6TH PRINCIPAL MERIDIAN, EXCEPT EXISTING ROAD RIGHT-OF-WAY.

James R. Beckett
JAMES R. BECKETT, R.L.S. NO. 832
PROFESSIONAL ENGINEERING CONSULTANTS, P.A.

KNOW ALL MEN BY THESE PRESENTS THAT WE, THE UNDERSIGNED PROPERTY OWNERS OF THE LAND AS ABOVE SET FORTH IN THE SURVEYOR'S CERTIFICATE, HAVE CAUSED THE LAND TO BE SURVEYED AND PLATTED INTO A LOT AND A BLOCK, THE SAME TO BE KNOWN AS PRAIRIE CROSSROADS UNITED METHODIST CHURCH ADDITION, SEDGWICK COUNTY, KANSAS.

EASEMENTS FOR CONSTRUCTION AND MAINTENANCE OF DRAINAGE AND PUBLIC UTILITIES ARE HEREBY GRANTED. THE STREETS ARE HEREBY DEDICATED TO AND FOR THE USE OF THE PUBLIC.

THE STREETS ARE HEREBY DEDICATED TO AND FOR THE USE OF THE PUBLIC. ALL ABUTTERS' RIGHT OF ACCESS TO AND FROM PANNEE AND 119TH STREET WEST AND ACROSS THE SOUTH AND WEST LINES OF LOT 1, BLOCK 1, AS SHOWN, ARE HEREBY GRANTED TO THE APPROPRIATE GOVERNING BODY; PROVIDED HOWEVER THAT LOT 1, BLOCK 1, SHALL HAVE ACCESS TO PANNEE AT ONE (1) LOCATION AND TO 119TH STREET WEST AT ONE (1) LOCATION, SAID LOCATION TO BE DESIGNATED BY THE APPROPRIATE ENGINEER.

A DRAINAGE PLAN HAS BEEN APPROVED FOR THIS PLAT. ALL DRAINAGE EASEMENTS AND RIGHTS-OF-WAY SHALL REMAIN AT ESTABLISHED GRADES AND UNOBSTRUCTED TO ALLOW FOR THE CONVEYANCE OF STORMWATER, UNLESS MODIFIED WITH THE APPROVAL OF THE APPLICABLE CITY OR COUNTY ENGINEER.

OWNER: WICHITA UNITED METHODIST DISTRICT UNION

BY: *Michael L. McGuire*
MICHAEL L. MCGUIRE, PRESIDENT, WICHITA UNITED METHODIST DISTRICT UNION

STATE OF KANSAS }
COUNTY OF SEDGWICK } SS

THIS INSTRUMENT WAS ACKNOWLEDGED BEFORE ME ON Jan 12, 2000, BY MICHAEL L. MCGUIRE, PRESIDENT, WICHITA UNITED METHODIST DISTRICT UNION

Gary C. Willet
GARY C. WILLET, NOTARY PUBLIC

MY APPOINTMENT EXPIRES: January 15, 2001



THIS PLAT OF PRAIRIE CROSSROADS UNITED METHODIST CHURCH ADDITION HAS BEEN SUBMITTED TO AND APPROVED BY THE WICHITA-SEDGWICK COUNTY METROPOLITAN AREA PLANNING COMMISSION, WICHITA, KANSAS.

DATED THIS _____ DAY OF _____, 2000.

WICHITA-SEDGWICK COUNTY METROPOLITAN AREA PLANNING COMMISSION

FRANCIS S. GAROFALO, CHAIRMAN

MARVIN S. KRÖUT, SECRETARY

REVIEWED IN ACCORDANCE WITH K.S.A. 58-2005 ON THIS _____ DAY OF _____, 2000.

TRICIA L. ROBELLO, LS #1246
DEPUTY COUNTY SURVEYOR
SEDGWICK COUNTY KANSAS

THIS PLAT IS APPROVED AND ALL DEDICATIONS SHOWN HEREON, IF ANY, ARE ACCEPTED BY THE CITY COUNCIL OF THE CITY OF WICHITA, KANSAS, THIS _____ DAY OF _____, 2000.

BOB KNIGHT, MAYOR

PAT BURNETT, CITY CLERK

THIS PLAT IS APPROVED AND ALL DEDICATIONS SHOWN HEREON, IF ANY, ARE ACCEPTED BY THE BOARD OF COUNTY COMMISSIONERS OF SEDGWICK COUNTY, KANSAS, THIS _____ DAY OF _____, 2000.

BILL HANCOCK, CHAIRMAN

JAMES ALFORD, COUNTY CLERK

ENTERED ON TRANSFER RECORD THIS _____ DAY OF _____, 2000.

JAMES ALFORD, COUNTY CLERK

THIS IS TO CERTIFY THAT THIS INSTRUMENT WAS FILED FOR RECORD IN THE REGISTER OF DEEDS OFFICE AT _____ A.M. - P.M., ON THE _____ DAY OF _____, 2000.

BILL WEEK, REGISTER OF DEEDS

LINDA KIZZIRE, DEPUTY

DSNR: GJM OPER: GJM SCALE: 1"=50.00 01-06-2000 08:17:58 am C:\1999\99371\CROSSROADS U.M.C. ADDITION.dwg\FINAL PLAT

SW Corner, SW 1/4, Sec. 31, T27S, R1W of the 6th P.M. Found 1/2" Iron Pipe

SE Corner, SW 1/4, Sec. 31, T27S, R1W of the 6th P.M. Found #5 Rebar