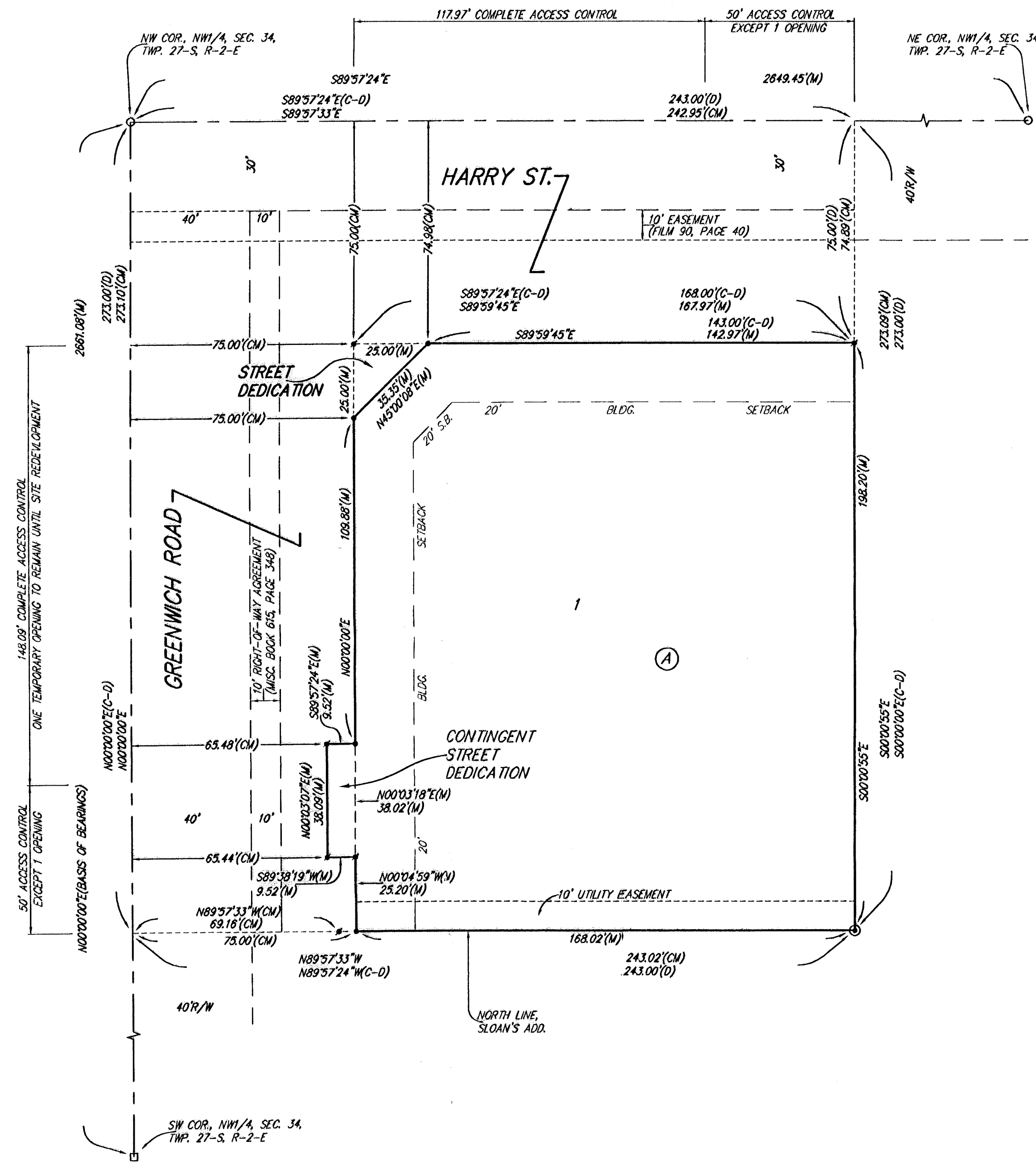
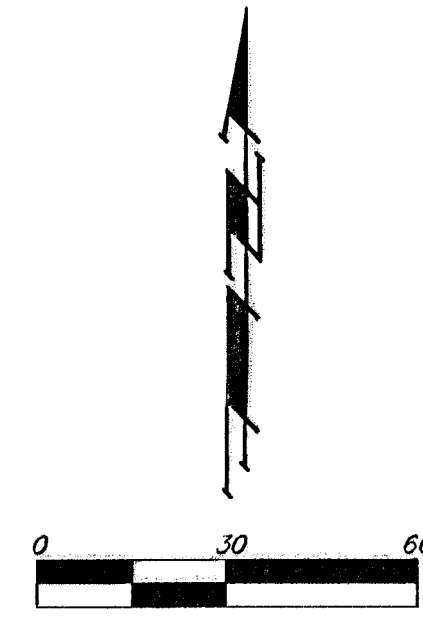


RALPH REED ADDITION WICHITA, SEDGWICK COUNTY, KANSAS



- #4 REBAR W/ "BAUGHMAN" CAP (SET)
 - #4 REBAR W/ "BAUGHMAN" CAP (FOUND)
 - #4 REBAR (FOUND)
 - 1/2" IRON (FOUND)
 - #5 REBAR W/ "PEC" CAP (FOUND)
- (M) = MEASURED
(D) = DESCRIBED
(CM) = CALCULATED PER MEASURED INFO.
(C-D) = CALCULATED PER DESCRIBED INFO.



NOTE:
BUTLER RURAL ELECTRIC COOPERATIVE ASSOCIATION, INC.
RIGHT-OF-WAY EASEMENT TO INSTALL POLES, ANCHORS,
AND LINES TO PROVIDE ELECTRIC SERVICE TO THE NW1/4
OF SEC. 34, TWP. 27-S, R-2-E OF THE 6TH P.M.,
SEDGWICK COUNTY, KANSAS. (FILM 1833, PAGE 722)

NOTE:
A drainage plan has been developed for this subdivision and is on file with
the City of Wichita, Kansas. Drainage inlets shall remain as depicted or as
modified with the approval of the City Engineer of the City of Wichita,
Kansas. No obstructions which impede the flow of this drainage plan shall
be allowed.

State of Kansas) SS
Sedgwick County) We, Baughman Company, P.A., Surveyors in
aforesaid county and state do hereby certify that we have surveyed and
platted "RALPH REED ADDITION", Wichita, Sedgwick County, Kansas and
that the accompanying plat is a true and correct exhibit of the property
surveyed, described as the west 243 feet of the north 273 feet of the
NW1/4 of Sec. 34, Twp. 27-S, R-2-E of the 6th P.M., Sedgwick County,
Kansas.

Existing public easements and dedications
being vacated by virtue of K.S.A. 12-512(b).
Baughman Company, P.A.

Michael A. Conrey
Michael A. Conrey
10-971
11-16-2003
Surveyor

Know all men by these presents that we,
the undersigned, have caused the land in the surveyors certificate to be
platted into a Lot, a Block, and Streets, to be known as "RALPH REED
ADDITION", Wichita, Sedgwick County, Kansas. The utility easement is
hereby granted as indicated for the construction and maintenance of all
public utilities. The streets are hereby dedicated to and for the use of
the public. The Greenwich Road contingent street dedication shall become
effective in the event that the City of Wichita, Kansas determines a need
for the right-of-way for any street related purposes provided, however,
that said contingent street dedication shall become effective only at such
time as the existing building is removed or destroyed. This contingent
street dedication shall not be construed to require such removal or
destruction. The Greenwich Road contingent street dedication shall be a
covenant running with the land and shall be binding on all heirs and
subsequent owners of all parts of said property covered by said
contingent street dedication. Access controls shall be as depicted on the
face of the plat and are hereby granted to the City of Wichita, Kansas.

Lois June Reed
Lois June Reed a/k/a June Reed

Clifford K. Callaway SD IRA
Clifford K. Callaway, Trustee
CLIFFORD K. CALLAWAY, TRUSTEE of
Mid Ohio Securities

Minor Emergency Center, P.A. Simplified Employee
Pension Plan for benefit of A. J. Reed

Hud Chapin, Trust Officer
HUD CHAPIN, TRUST OFFICER
Sunflower Bank, N.A.

Minor Emergency Center, P.A.,
a Kansas professional association

A. J. Reed, President
A. J. Reed

State of Kansas) SS
Sedgwick County) The foregoing instrument acknowledged be-
fore me, this 10 day of February, 2004, by Lois June Reed a/k/a
June Reed, a single person.

Teresa Henderson, Notary Public
TERESA HENDERSON
My App't. Exp. 11/16/2006

State of Kansas) SS
Sedgwick County) The foregoing instrument acknowledged be-
fore me, this 17 day of February, 2004, by Clifford K. Callaway,
TRUSTEE of Mid Ohio Securities as Custodian for benefit of
Clifford K. Callaway SD IRA, on behalf of the IRA.

Teresa Henderson, Notary Public
TERESA HENDERSON
My App't. Exp. 11/16/2006

State of Kansas) SS
Sedgwick County) The foregoing instrument acknowledged be-
fore me, this 19 day of February, 2004, by Hud Chapin,
TRUST OFFICER of Sunflower Bank, N.A. as Trustee of the Minor
Emergency Center, P.A. Simplified Employee Pension Plan for benefit of
of A. J. Reed, on behalf of the simplified employee pension plan.

Reid A. Cranmer, Notary Public
REID A. CRANMER
My App't. Exp. 8-27-07

This plat of "RALPH REED ADDITION", Wichita,
Sedgwick County, Kansas has been submitted to and approved by the
Wichita-Sedgwick County Metropolitan Area Planning Commission, Wichita,
Kansas.

Dated this _____ day of _____,
Wichita-Sedgwick County Metropolitan Area Planning Commission

Bernard A. Hentzen, Chair

John L. Schlegel, Secretary

This plat approved and all dedications
shown hereon accepted by the City Council of the City of Wichita,
Kansas, this _____ day of _____.

Carlos Mayans, Mayor

Karen Schofield, City Clerk

Reviewed in accordance with K.S.A. 58-2005
on this _____ day of _____.

Tricia L. Robello, L.S. #1246
Deputy County Surveyor
Sedgwick County, Kansas

Entered on transfer record this _____ day
of _____.

Don Brace, County Clerk

State of Kansas)
Sedgwick County) SS This is to certify that this plat has been
filed for record in the office of the Register of Deeds, this _____ day
of _____, 2004, at _____ o'clock _____ M.; and is duly recorded.

Bill Meek, Register of Deeds

Linda Kizzire, Deputy

State of Kansas)
Sedgwick County) SS The foregoing instrument acknowledged be-
fore me, this 30 day of April, 2004, by A. J. Reed,
President of Minor Emergency Center, P.A., a Kansas professional
association, on behalf of the association.

Judith M. Terhune, Notary Public
JUDITH M. TERHUNE
My App't. Exp. 11-7-2005

BAUGHMAN COMPANY P.A.
ENGINEERING, SURVEYING, & PLANNING
318-282-7271 • 315 ELLIS • WICHITA, KANSAS 67211
F:\PLAT\RALPH REED\WIC\RALPHREED.DWG-DWG-MSC