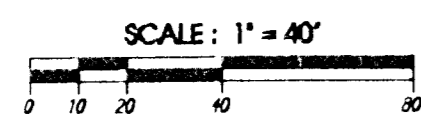
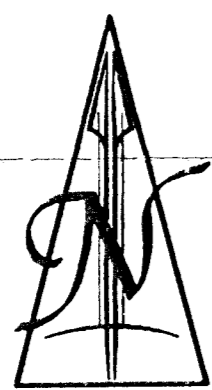
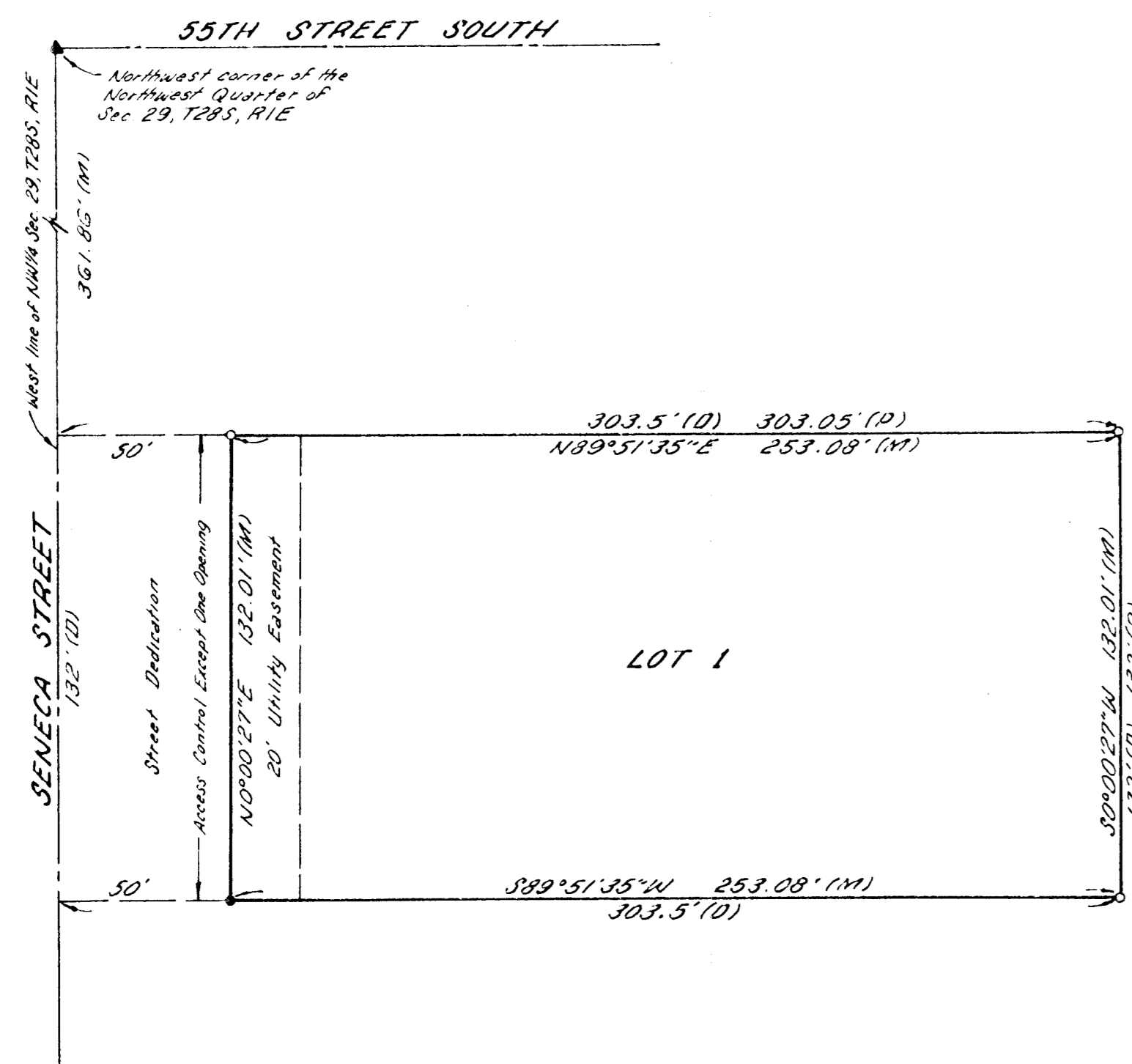


FINAL PLAT OF
"RAINBOW ESTATES SECOND ADDITION"
 SEDGWICK COUNTY, KANSAS
 IN THE NW 1/4 OF SECTION 29, T28S, R1E OF THE 6TH P.M.



- ▲ = Section Corner
 - = #4 Rebar with I.D. Cap
"TFLSI CLS22" Found
 - = #4 Rebar with I.D. Cap
"TFLSI CLS22" Set
 - (D) = Described
 - (P) = Platted
 - (M) = Measured
- Bearing Basis Assumed

FLOOD ZONE:
 Subject property is in Zone C, as shown of
 Federal Emergency Management Agency
 (FEMA) Flood Insurance Rate Map (FIRM) for
 Sedgwick County, Kansas, Community Panel
 Number 200321 0225 A, effective June 3, 1986.

Reviewed in accordance with K.S.A. 58-2005 on this 9th day
 of December, 1999.

Tricia L. Robello
 Tricia L. Robello, LS#1246
 Deputy County Surveyor
 Sedgwick County, Kansas

Entered on transfer record this _____ day of _____, 1999.

 County Clerk
 James Alford

State of Kansas)
 Sedgwick County) ss

Terra Tech Land Surveying, Inc., a corporation registered and authorized to practice Land Surveying in the State of Kansas, hereby certifies that it has surveyed and platted "RAINBOW ESTATES SECOND ADDITION", Sedgwick County, Kansas, and the accompanying plat is a true and correct exhibit of such survey described as:

The South 132 feet of the West 303.5 feet of the South Half of the North 15 acres of the West Half of the Northwest Quarter of Section 29, Township 28 South, Range 1 East of the Sixth Principal Meridian, Sedgwick County, Kansas.

TERRA TECH LAND SURVEYING, INC.

Michele Goodrich
 Michele Goodrich LS #958

December 3, 1999
 Date



Know all men by these presents that the undersigned, owners of the land described in the Surveyor's Certificate, have caused the same to be surveyed and platted into a Lot and a Street, to be known as "RAINBOW ESTATES SECOND ADDITION", Sedgwick County, Kansas. The utility easement as shown hereon is hereby granted for the construction and maintenance of all public utilities. The Street is hereby granted to and for the use of the public. All abutters' rights of access to or from Seneca Street, over and across the West line of Lot 1, are hereby granted to the appropriate governing body, provided however that Lot 1 shall have access to Seneca Street at one location. A drainage plan has been developed for this plat and all drainage easements, rights of way, or reserves shall remain at established grades or as modified with the approval of the applicable City or County Engineer, and unobstructed to allow for the conveyance of stormwater.

Scotty W. Branum
 Scotty W. Branum

Denice L. Branum
 Denice L. Branum

State of Kansas)
 Sedgwick County) ss

This instrument was acknowledged before me this 6 day of November, 1999,
 by Scotty W. Branum and Denice L. Branum.

Karen L. Nicholson Notary Public
 Karen L. Nicholson

My Commission Expires: 12/27/00

This plat of "RAINBOW ESTATES SECOND ADDITION", Sedgwick County, Kansas, has been submitted to and approved by the Wichita-Sedgwick County Metropolitan Area Planning Commission, Wichita, Kansas.

Dated this _____ day of _____, 1999.

WICHITA-SEDGWICK COUNTY
 METROPOLITAN AREA PLANNING COMMISSION

 Francis S. Garofalo, Chairman

 Marvin S. Krout, Secretary

This plat approved and all dedications shown hereon are accepted by the City Council of the City of Wichita, Kansas, this _____ day of _____, 1999.

WICHITA CITY COUNCIL

 Bob Knight, Mayor

 Pat Burnett, City Clerk

This plat approved and all dedications shown hereon, if any, accepted by the Board of County Commissioners of Sedgwick County, Kansas, this _____ day of _____, 1999.

COUNTY COMMISSIONERS

 Bill Hancock, Chairman

Attest: _____
 James Alford, County Clerk

State of Kansas)
 Sedgwick County) ss

This is to certify that this instrument was filed for record in the Register of Deeds Office, at _____ o'clock _____ M., on the _____ day of _____, 1999.

 Bill Meek, Register of Deeds

 Linda Kizzire, Deputy

TERRA TECH
 LAND SURVEYING INC.

239 North Ohio
 Wichita, Kansas 67214-3933
 (316) 267-0744 / 267-2348
 Fax (316) 267-2726