

RIDGE PORT NORTH 6TH ADDITION

WICHITA, SEDGWICK COUNTY, KANSAS

State of Kansas) SS We, Baughman Company, P.A., Surveyors in Sedgewick County and State do hereby certify that we have surveyed and plotted RIDGE PORT NORTH 6TH ADDITION, Wichita, Sedgewick County, Kansas and that the accompanying plat is a true and correct exhibit of the property surveyed, described as and being a report of all of Lot 1, Addition, Wichita, Sedgewick County, Kansas.

All being situated in the NW 1/4 of Sec. 34, Twp. 26-S, R. 1-W of the 6th P.M., Sedgewick County, Kansas. Existing public easements and dedications being recorded by reference to K.S.A. 12-5210(b).

Know all men by these presents that we the undersigned owners, have caused the land in the surveyors certificate to be platted into Lots A, B, C, D, E, F, G, H, I, J, K, L, M, N, O, P, Q, R, S, T, U, V, W, X, Y, Z, and Reserves to be known as RIDGE PORT NORTH 6TH ADDITION, Wichita, Sedgewick County, Kansas. The utility easements are hereby granted, as indicated by the construction and utility easements are hereby granted as indicated for drainage purposes. The drainage and utility easements are hereby granted as indicated for drainage purposes and for the construction and maintenance of all public utilities. The well easements are hereby granted, as indicated by the construction and utility easements are hereby granted as indicated for drainage purposes. The drainage and utility easements are hereby granted as indicated for drainage purposes. The drainage and utility easements are hereby granted as indicated for drainage purposes.

Cooperative Assisted Living, Inc. a Kansas not-for-profit corporation
Jerry Conroy and CEO
Catholic Diocese of Wichita, a Kansas not-for-profit corporation
Michael Q. Jockels, President
Wichita-Sedgewick County Metropolitan Area Planning Commission
G. Nelson Van Fleet, Chairman
John L. Schlegel, Secretary
Carl Brewer, Mayor
Karen Sobel, City Clerk

Wichita-Sedgewick County Metropolitan Area Planning Commission
G. Nelson Van Fleet, Chairman
John L. Schlegel, Secretary
Carl Brewer, Mayor
Karen Sobel, City Clerk

Wichita-Sedgewick County Metropolitan Area Planning Commission
G. Nelson Van Fleet, Chairman
John L. Schlegel, Secretary
Carl Brewer, Mayor
Karen Sobel, City Clerk

Wichita-Sedgewick County Metropolitan Area Planning Commission
G. Nelson Van Fleet, Chairman
John L. Schlegel, Secretary
Carl Brewer, Mayor
Karen Sobel, City Clerk

Wichita-Sedgewick County Metropolitan Area Planning Commission
G. Nelson Van Fleet, Chairman
John L. Schlegel, Secretary
Carl Brewer, Mayor
Karen Sobel, City Clerk

Wichita-Sedgewick County Metropolitan Area Planning Commission
G. Nelson Van Fleet, Chairman
John L. Schlegel, Secretary
Carl Brewer, Mayor
Karen Sobel, City Clerk

Filed on transfer record this _____ day of _____, 2008.
Kathy B. Arnold, County Clerk

Reviewed in accordance with K.S.A. 58-2005 on this _____ day of _____, 2008.
Bill Meek, Register of Deeds

Noted in accordance with K.S.A. 58-2005 on this _____ day of _____, 2008.
Tanya Baughman, Deputy

Noted in accordance with K.S.A. 58-2005 on this _____ day of _____, 2008.
Tanya Baughman, Deputy

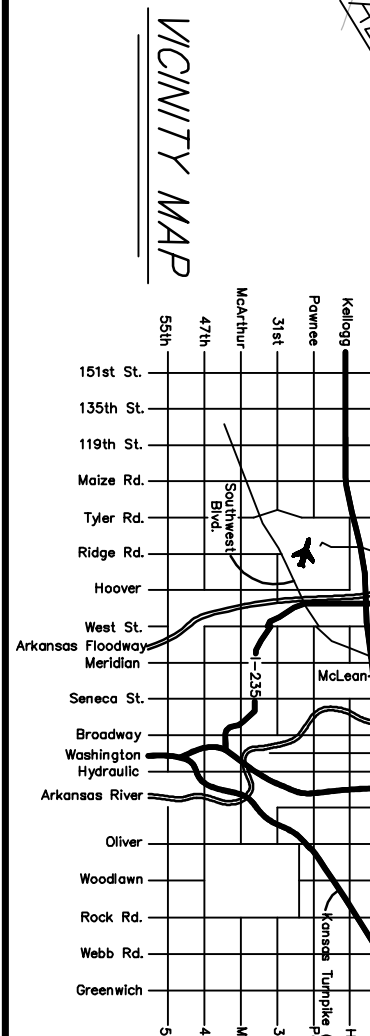
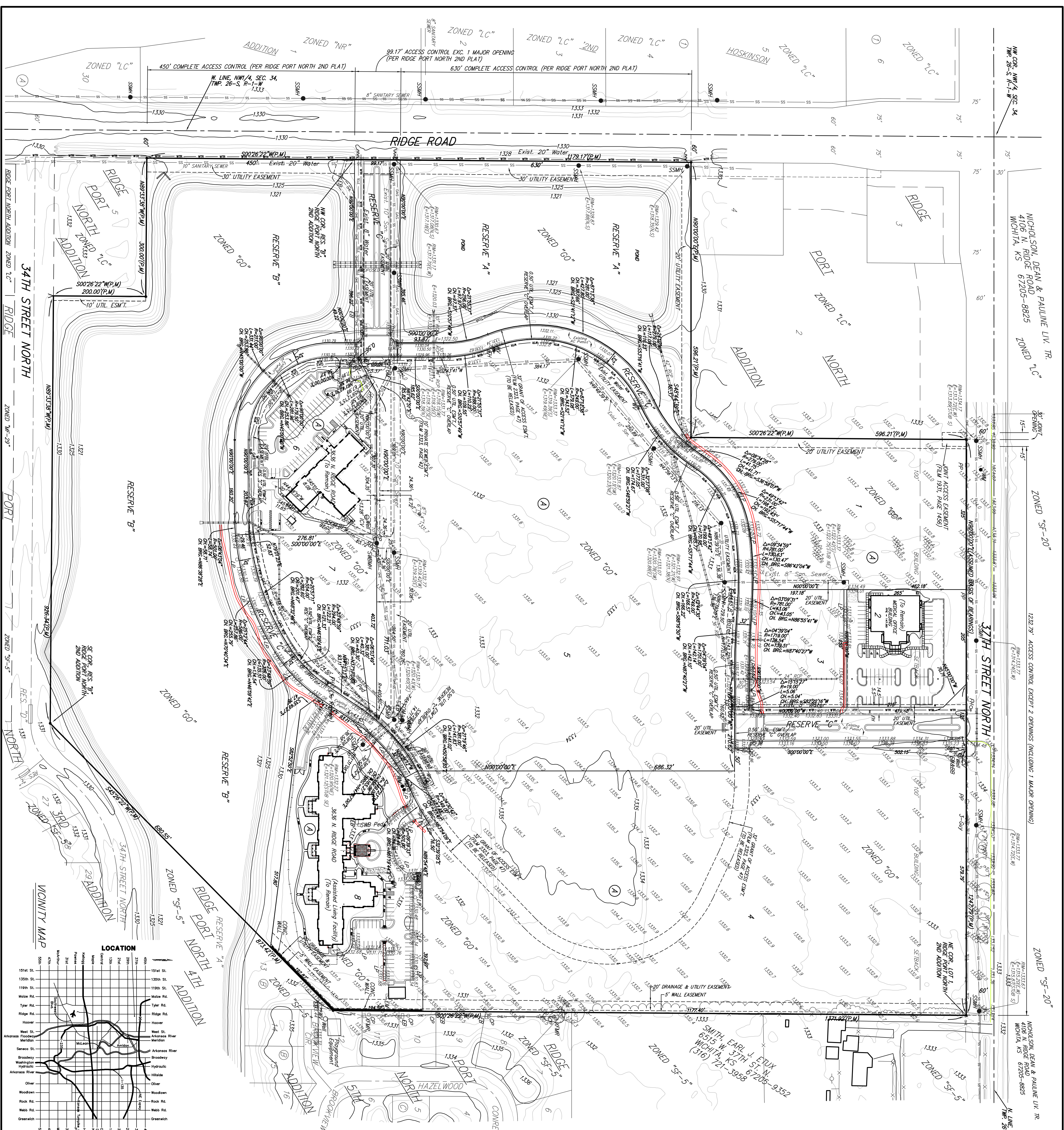
Noted in accordance with K.S.A. 58-2005 on this _____ day of _____, 2008.
Tanya Baughman, Deputy

Noted in accordance with K.S.A. 58-2005 on this _____ day of _____, 2008.
Tanya Baughman, Deputy

Noted in accordance with K.S.A. 58-2005 on this _____ day of _____, 2008.
Tanya Baughman, Deputy

Noted in accordance with K.S.A. 58-2005 on this _____ day of _____, 2008.
Tanya Baughman, Deputy

Noted in accordance with K.S.A. 58-2005 on this _____ day of _____, 2008.
Tanya Baughman, Deputy



Baughman Company, P.A.
315 E. 15th St., Wichita, KS 67211 P: 316-262-7271 F: 316-262-0149
Baughman
FURNACEVILLE | SHERWOOD | TOWNSEND | LAWRENCE | CATHERINE | EDWARDSVILLE

RIDGE PORT NORTH 6TH ADDITION
20 NOV 2009