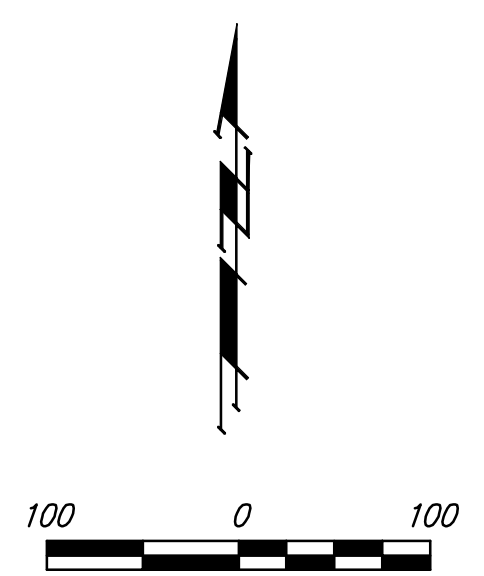
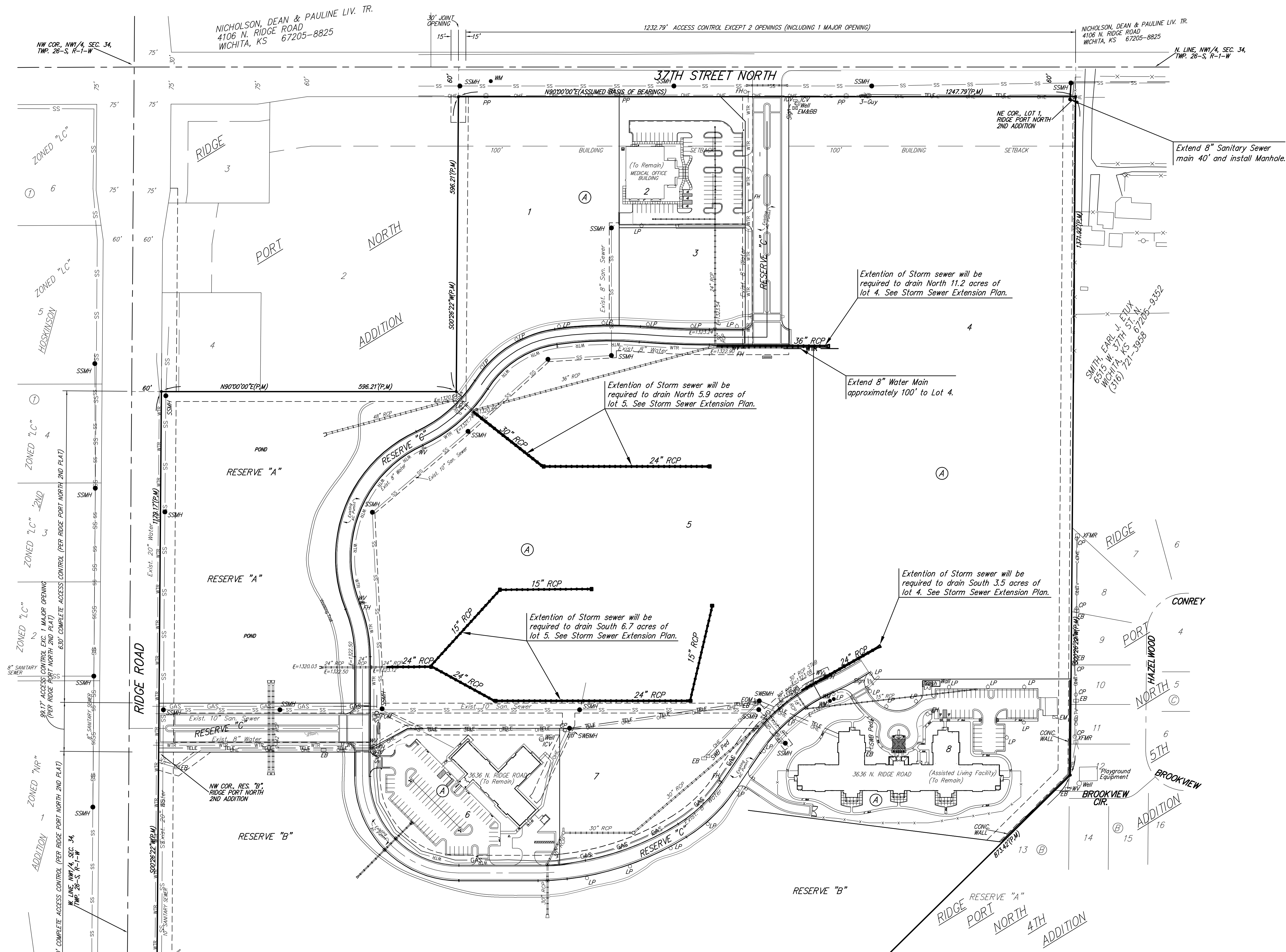


# UTILITY PLAN FOR RIDGE PORT NORTH 6TH

AN ADD. TO WICHITA, SEDGWICK COUNTY, KANSAS  
PRIOR LOT 1, RESERVES A&B OF RIDGE PORT 2ND ADD.



- BENCHMARK-1:**  
 □ TOP OF INLET SE OF SE COR.  
 LOT 2 RIDGE PORT NORTH  
 ELEV=1330.89 (NAVD88)
- BENCHMARK-2:**  
 □ TOP OF CURB SOUTH END OF  
 SOUTH MEDIAN AT ENTRANCE ON  
 37TH STREET NORTH  
 ELEV=1333.39 (NAVD88)
- BENCHMARK-3:**  
 □ TOP OF CURB WEST END OF  
 ENTRANCE TO RETIREMENT COMPLEX  
 ELEV=1331.62 (NAVD88)
- DI = Round Drop Inlet
  - DI = Square Drop Inlet
  - CP = Cable TV Pedestal
  - ⊖ EM = Electric Meter
  - ⊖ EM&BB = Electric Meter & Breaker Box
  - EB = Electric Box
  - FH = Fire Hydrant
  - Guy = Guy Anchor
  - ICV = Irrigation Control Valve
  - LP = Light Pole
  - △ PM = Pipeline Marker
  - PP = Power Pole
  - ⊖ Sign = Sign
  - SWBMH = Southwestern Bell Manhole
  - SWB Ped = Southwestern Bell Pedestal
  - SWSMH = Stormwater Sewer Manhole
  - T = Tree
  - Well = Cased Well
  - WM = Water Meter
  - ⊖ WF = Water Valve
  - XFMR = Transformer
  - WTV = Water Test Valve
  - △ FOM = Fiberoptic Marker

- GAS — GAS — GAS — Gas Line
- OHE — OHE — OHE — Electric Line
- SS — SS — SS — Sanitary Sewer Line
- SWS — SWS — SWS — Stormwater Sewer Line
- TELE — TELE — TELE — Telephone Line
- WTR — WTR — WTR — Water Line
- — — — — Fence Line

**NOTE:** This site lies within Zone X based on FEMA FIRM panel 335 of 700 for Community Kit #20173C for Sedgwick County, Kansas, effective February 2, 2007. Zone X are areas determined to be outside the 0.2% annual chance of floodplain.

## UTILITY PLAN RIDGE PORT NORTH SIXTH ADDITION