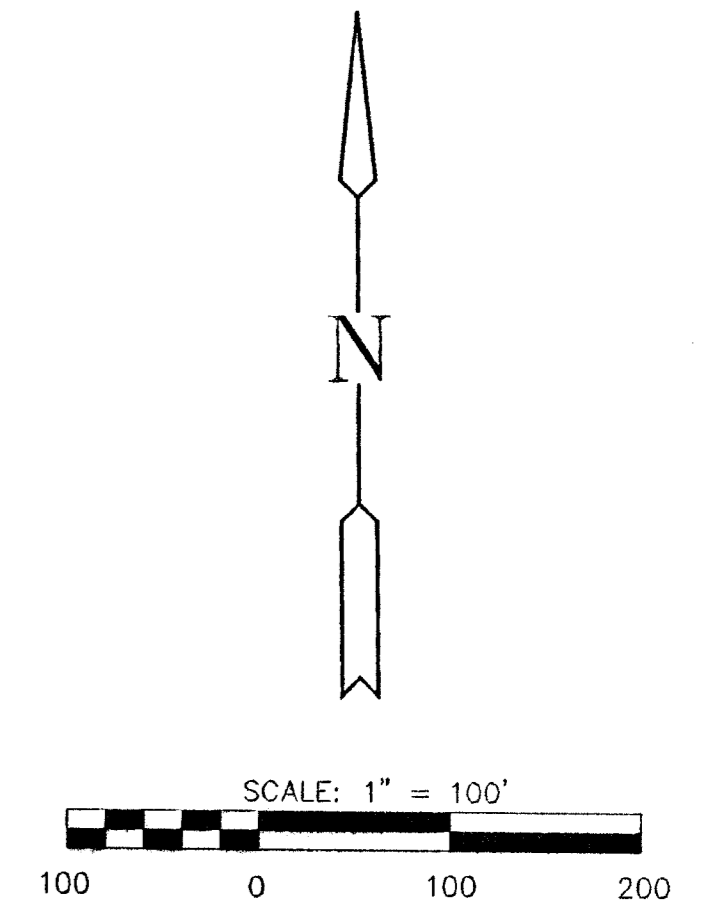
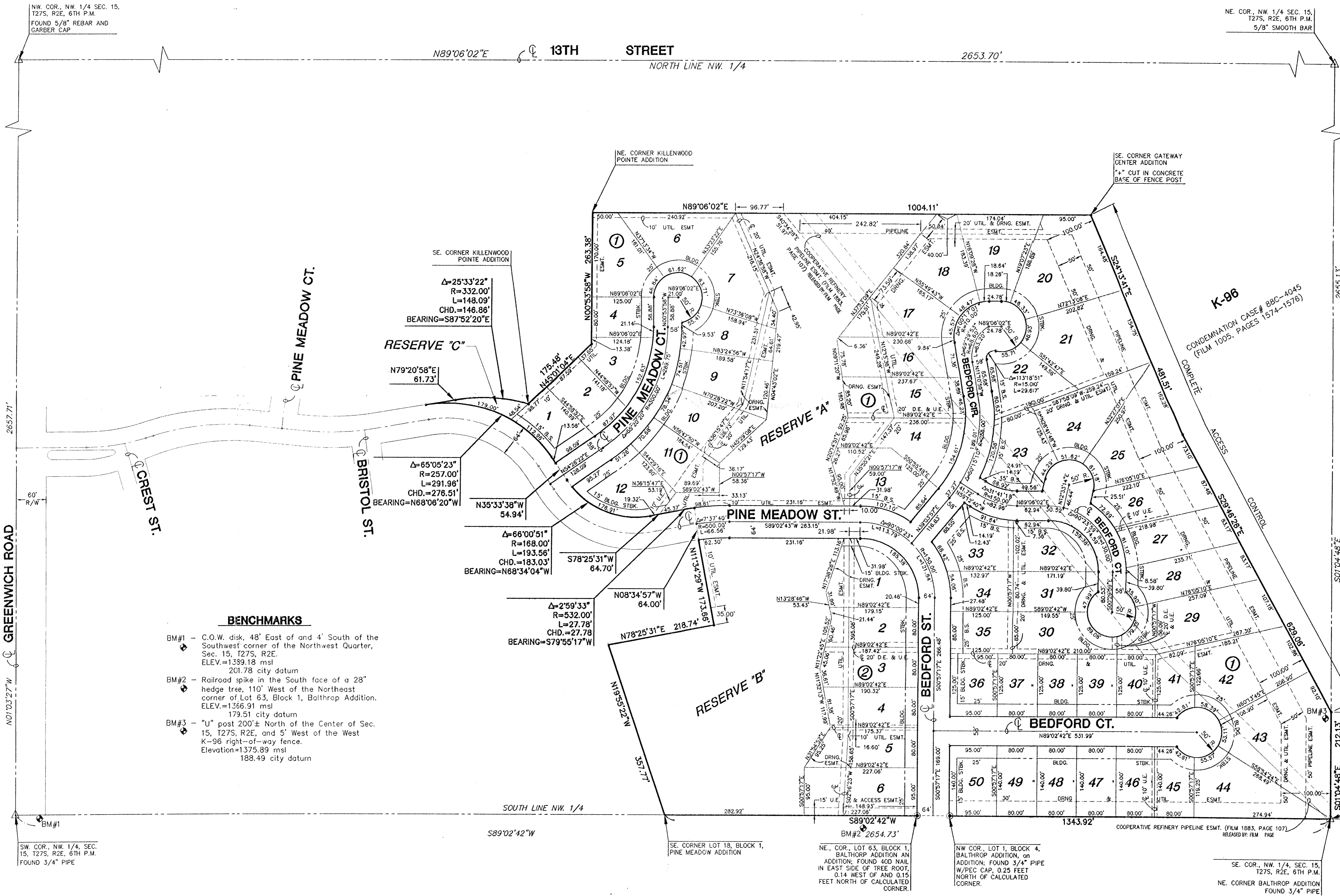


FINAL PLAT

PINE MEADOW SECOND ADDITION

AN ADDITION TO WICHITA, SEDGWICK COUNTY, KANSAS



- LEGEND**
- △ = SECTION CORNER MONUMENT FOUND
 - ⊙ = FOUND PROPERTY CORNER REBAR
 - = SET 5/8" REBAR W/ MKEC CLS #39 CAP
 - U.E. = UTILITY EASEMENT
 - B.S. = BUILDING SETBACK

MINIMUM PAD ELEVATIONS (LOWEST OPENINGS)			
LOT	BLOCK	ELEVATION (CITY DATUM)	ELEVATION (USGS)
7	1	186.8	1374.2
8	1	186.8	1374.2
9	1	186.8	1374.2
10	1	186.8	1374.2
11	1	186.8	1374.2
12	1	186.8	1374.2
13	1	186.8	1374.2
14	1	186.8	1374.2
15	1	186.8	1374.2
16	1	186.8	1374.2
17	1	186.8	1374.2
18	1	186.8	1374.2
1	2	182.3	1369.7
2	2	182.3	1369.7
3	2	182.3	1369.7
4	2	182.3	1369.7
5	2	182.3	1369.7
6	2	182.3	1369.7

- BENCHMARKS**
- BM#1 - C.O.W. disk, 48' East of and 4' South of the Southwest corner of the Northwest Quarter, Sec. 15, T27S, R2E. ELEV.=1389.18 msl
201.78 city datum
 - BM#2 - Railroad spike in the South face of a 28" hedge tree, 110' West of the Northeast corner of Lot 63, Block 1, Balthrop Addition. ELEV.=1356.91 msl
179.51 city datum
 - BM#3 - "U" post 200'± North of the Center of Sec. 15, T27S, R2E, and 5' West of the West K-96 right-of-way fence. Elevation=1375.89 msl
188.49 city datum

R:\ACTIV\10077\DWG\PROJ\PLAT\PHASE\10.077.r1.dwg Tue Nov 20 11:09:33 2001

FINAL PLAT
PINE MEADOW SECOND ADDITION
 AN ADDITION TO WICHITA, SEDGWICK COUNTY, KANSAS

I, Gregory J. Allison, a Registered Land Surveyor in Kansas, do hereby certify that I have been in responsible charge of surveying and platting of "PINE MEADOW SECOND ADDITION", an addition to Wichita, Sedgwick County, Kansas, into Lots, Blocks, Streets, and Reserves, the same being accurately set forth in the accompanying plat and described herein:

An unplatted 34.09 acre tract of land located within the Northwest Quarter, Section 15, Township 27 South, Range 2 East, of the 6th Principal Meridian, Wichita, Sedgwick County, Kansas; said tract more particularly described as follows:

BEGINNING at the Southeast corner of said Northwest Quarter, said point also being the Northeast corner of Baltrop Addition, an addition to Sedgwick County, Kansas; thence along the South line of said Northwest Quarter and along the North line of said Baltrop Addition, S 89°02'42" W, 1343.92 feet to a point at the Southeast corner of Lot 18, Block 1, Pine Meadow Addition, an addition to Wichita, Sedgwick County, Kansas; thence along the East line of said Pine Meadow Addition, N 19°55'22" W, 357.77 feet; thence along said East line of said Pine Meadow Addition, N 78°25'31" E, 218.74 feet; thence along said East line of said addition, N 11°34'29" W, 173.66 feet to a point on the South Right-of-Way line of Pine Meadow Street; thence, N 08°34'57" W, 64.00 feet to a point on the North Right-of-Way line of said Pine Meadow Street, said point being at the Northeast corner of said Pine Meadow Addition; thence along the North line of said Pine Meadow Addition and along a curve to the left, thence along the arc of said curve for a distance of 27.78 feet, said curve having a central angle of 02°59'32", a radius of 532.00 feet, and a long chord distance of 27.78 feet, bearing S 79°55'17" W; thence continuing along said North line, S 78°25'31" W, 64.70 feet; thence along said North line and along a curve to the right, thence along the arc of said curve for a distance of 193.56 feet, said curve having a central angle of 66°00'51", a radius of 168.00 feet, and a long chord distance of 183.03 feet, bearing N 68°34'04" W; thence along said North line, N 35°33'38" W, 54.94 feet; thence along a curve to the left, thence along the arc of said curve for a distance of 291.96 feet to a point on the South line of Killenwood Pointe Addition, an addition to Wichita, Sedgwick County, Kansas, said curve having a central angle of 65°05'24", a radius of 257.00 feet, and a long chord distance of 276.51 feet, bearing N 68°06'20" W; thence along said South line of said Killenwood Pointe Addition, N 79°20'58" E, 61.73 feet; thence along said South line along a curve to the right, thence along the arc of said curve for a distance of 148.09 feet, said curve having a central angle of 25°33'23", a radius of 332.00 feet, and a long chord distance of 146.86 feet, bearing S 87°52'20" E to the Southeast corner of said Killenwood Pointe Addition; thence along the East line of said Killenwood Pointe Addition, N 45°01'04" E, 175.48 feet; thence along said East line of said addition, N 00°53'58" W, 283.38 feet to a point on the South line of the Gateway Center Addition, an addition to Wichita, Sedgwick County, Kansas; thence along said South line of said Gateway Center Addition, N 89°06'02" E, 1004.11 feet to a point at the Southeast corner of said The Gateway Center Addition said point being on the West Right-of-Way line of K-96 Highway, established by Condemnation Case #88C4045; thence along said West Right-of-Way line, S 24°13'41" E, 481.51 feet; thence along said West Right-of-Way line, S 29°46'26" E, 629.06 feet; thence along said West Right-of-Way line, S 01°04'48" E, 212.13 feet to the POINT OF BEGINNING.

Drainage Easements found on Film 2079, Page 1104; Film 1911, Page 715; and Utility Easements found on Film 1911, Page 721; Film 2158, Page 813, within the described property are hereby vacated by virtue of K.S.A. 12-512(b).

I hereby certify that the details of this plat are correct to the best of my knowledge and belief this 14th day of November 2001.



Gregory J. Allison, PE, LS #1257
 MKEC Engineering Consultants, Inc.
 411 North Webb Road
 Wichita, Kansas 67206

Know all men by these presents that we the undersigned property owners of the land above set forth in the Registered Land Surveyor's Certificate, have caused the same to be surveyed and platted into Lots, Blocks, Streets, and Reserves, the same to be known as "PINE MEADOW SECOND ADDITION", an addition to Wichita, Sedgwick County, Kansas. Easements for the construction and maintenance of public utilities, and drainage, as indicated on the accompanying plat are hereby granted. Reserves "A" and "B" are platted for drainage, landscaping, irrigation, and open space. Reserve "C" is platted for berms, monuments, irrigation, and landscaping. The reserves shall be owned and maintained by the homeowners association. The streets are hereby dedicated to and for the use of the public. A drainage plan has been developed for this plat and all drainage easements, right-of-way, or reserves shall remain at established grades or as modified with the approval of the applicable City or County Engineer, and unobstructed to allow for the conveyance of storm water. All abutters right of access to or from K-96 Highway over and across the East line of "Pine Meadows Second Addition," are hereby granted to the appropriate governing body, as indicated on the face of the plat.

Willard J. Kiser Properties, L.L.C.

John L. Kiser, M.D. Manager
 JOHN L. KISER, M.D. MANAGER

STATE OF KANSAS)
) ss.
 SEDGWICK COUNTY)

BE IT REMEMBERED, that on this 15th day of Nov., 2001, before me the undersigned, a Notary Public in and for the County and State aforesaid, came John L. Kiser, M.D., Manager, Willard J. Kiser Properties, L.L.C., to me personally known to be the same person who executed the foregoing instrument of writing and duly acknowledged the execution of the same.

IN WITNESS WHEREOF, I have hereunto set my hand and affixed my official seal, the day and year last above written.

Krista L. Peterson Notary Public
 KRISTA L. PETERSON
 Notary Public
 My appointment expires: 9-27-2003

Kiser Gateway, L.L.C.

John L. Kiser, M.D. Manager
 JOHN L. KISER, M.D. MANAGER

STATE OF KANSAS)
) ss.
 SEDGWICK COUNTY)

BE IT REMEMBERED, that on this 15th day of Nov., 2001, before me the undersigned, a Notary Public in and for the County and State aforesaid, came John L. Kiser, M.D., Manager, Kiser Gateway, L.L.C., to me personally known to be the same person who executed the foregoing instrument of writing and duly acknowledged the execution of the same.

IN WITNESS WHEREOF, I have hereunto set my hand and affixed my official seal, the day and year last above written.

Krista L. Peterson Notary Public
 KRISTA L. PETERSON
 Notary Public
 My appointment expires: 9-27-2003

We Intrust Bank N.A. holders of a mortgage on the above described property, do hereby consent to the plat of "PINE MEADOW SECOND ADDITION."

INTRUST BANK N.A.
Gary D. Schmitt
 Gary D. Schmitt

STATE OF KANSAS)
) ss.
 SEDGWICK COUNTY)

BE IT REMEMBERED, that on this 12th day of DECEMBER, 2001, before me the undersigned, a Notary Public in and for the County and State aforesaid, came GARY D. SCHMITT, Intrust Bank N.A., to me personally known to be the same person who executed the foregoing instrument of writing and duly acknowledge the execution of the same.

IN WITNESS WHEREOF, I have hereunto set my hand and affixed my official seal, the day and year last above written.

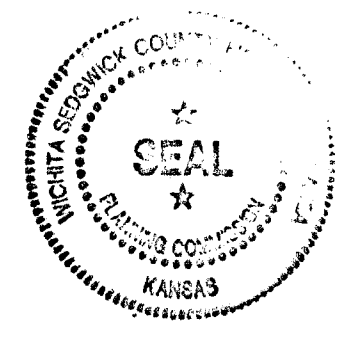
Marabeth R. Nice Notary Public
 Marabeth R. Nice
 Notary Public
 My appointment expires: 2/3/05

This plat of "PINE MEADOW SECOND ADDITION", has been submitted to and approved by the Wichita-Sedgwick County Metropolitan Area Planning Commission, Wichita, Kansas. Dated this 14th day of October, 2001.

WCHITA-SEDGWICK COUNTY METROPOLITAN PLANNING COMMISSION

J.D. Michaels Chair
 J.D. Michaels, Chair

Marvin S. Krout Secretary
 Marvin S. Krout, Secretary



This plat approved and all dedications shown thereon, if any, accepted by the City Council of the City of Wichita, Kansas, this ___ day of _____, 2001.

At the direction of the City Council.

_____, City Manager
 Chris Cherches, City Manager

_____, City Clerk
 Pat Burnett, City Clerk

Entered on transfer record this ___ day of _____, 2001.

_____, County Clerk
 Don Brace, County Clerk

STATE OF KANSAS)
) ss.
 SEDGWICK COUNTY)

This is to certify that this instrument was filed for record in the Register of Deeds office this ___ day of _____, 2001 at ___ o'clock M; and duly recorded.

_____, Register of Deeds
 Bill Meek, Register of Deeds

_____, Deputy
 Linda Kizzire, Deputy

Reviewed in accordance with K.S.A. 58-2005 on this 12th day of November, 2001.

Tricia L. Robello Deputy County Surveyor
 Tricia L. Robello, LS #1246
 Deputy County Surveyor
 Sedgwick County, Kansas