

LOCATION MAP

Per City of Wichita, Sedgewick County, Kansas Flood Insurance Rate Map (FIRM) Community Panel Number 200328 0029B (May 15, 1985) this property is in Flood Zone B.

- LEGEND**
- ⊙ - GAS METER
  - ⊙ - SIGNAL LIGHT
  - ⊙ - TREE AND DIAMETER
  - ⊙ - SIGN
  - ⊙ - IRON BAR
  - ⊙ - BUSH
  - ⊙ - POWER POLE AND READMAN
  - ⊙ - ELECTRIC BOX
  - ⊙ - CLENDON
  - ⊙ - UNDERGROUND ELECTRIC LINE
  - ⊙ - FENCE
  - ⊙ - BENCHMARK
  - ⊙ - STORM WATER MANHOLE
  - ⊙ - GATE
  - ⊙ - TRAFFIC SIGNAL MANHOLE
  - ⊙ - SECTION CENTER
  - ⊙ - RETAINING WALL
  - ⊙ - LIGHT POLE
  - ⊙ - WATER METER
  - ⊙ - TELEPHONE RISER
  - ⊙ - WATER LINE
  - ⊙ - SANITARY SEWER LINE
  - ⊙ - GAS LINE
  - ⊙ - TELEPHONE LINE
  - ⊙ - INLET
  - ⊙ - SANITARY SEWER MANHOLE
  - ⊙ - TELEPHONE MANHOLE

**BENCHMARK**

BM C.O.W. BM Disk in concrete base of Roll Road crossing signal, 38.7' South of E Pawnee & 32.2' West of E A.T. & S.F. Roll Road Elevation = 100.45



SCALE: 1"=20'

SW Cor. SW 1/4, Sec 34, T27S, R 1 E, 5th P.M. S. 00°00'00" E (BASIS OF BEARING)

**DRAINAGE & UTILITY PLAN**

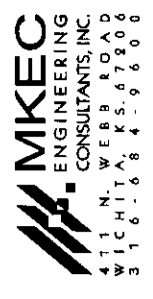
**PIZZA HUT**

**ADDITION**

OWNER: RUTH E. ELLIOT-REVOCABLE LIVING TRUST  
 RICHARD EARL HAMMER AND SUSAN HALL

DEVELOPER: PIZZA HUT OF AMERICA, INC

DATE: JULY 2000



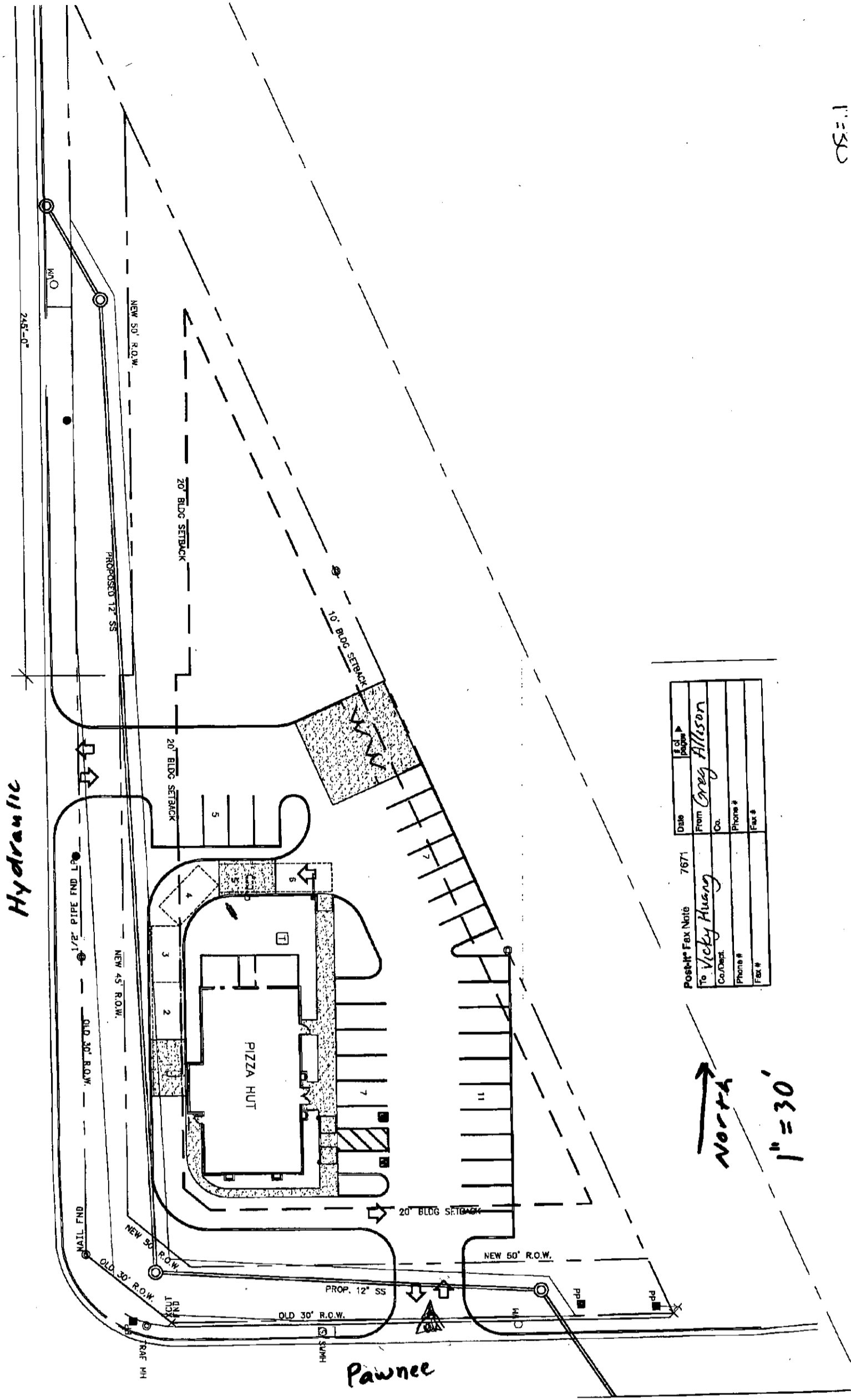
H:\GML\00121\DWG\PROP\PREP\A7\00121DRN.DWG

**DRAINAGE ANALYSIS SUMMARY**  
**Pizza Hut - Hydraulic and Pawnee**

Soil Group D

Area ac	Accum. Area ac	C2	C5	C10	C100	Elev Max	Elev Min	Flow Length	Tc2 Calc	Avg V2	Tc5 Calc	Avg V5	Tc10 Calc	Avg V10	Tc100 Calc	vg V100	Tc2 min	Tc5 min	Tc10 min	Tc100 min	I5 in/hr	I10 in/hr	I100 in/hr	Q2 cfs	Q5 cfs	Q10 cfs	Q100 cfs	
																												Calc
0.38		0.87	0.88	0.90	0.93	98.85	97.91	200.00	7.53	0.44	7.20	0.46	6.55	0.51	5.57	0.60	15	15	15	15	3.83	4.56	5.22	7.37	1.25	1.50	1.76	2.57
0.31		0.87	0.88	0.90	0.93	99.00	98.64	75.00	4.58	0.27	4.38	0.29	3.98	0.31	3.38	0.37	15	15	15	15	3.83	4.56	5.22	7.37	1.04	1.25	1.46	2.13
0.44		0.87	0.88	0.90	0.93	96.85	97.59	95.00	3.67	0.43	3.51	0.45	3.19	0.50	2.71	0.58	15	15	15	15	3.83	4.56	5.22	7.37	1.47	1.77	2.07	3.02

1:30



Date	8/10/00
From	Greg Allison
To	Vicky Huang
Co.	
Co./Dist.	
Phone #	
Fax #	

Post-# Fax Note 7671