

# PLAZA CENTRAL OFFICE PARK 2ND ADDITION

## TO WICHITA, SEDGWICK COUNTY, KANSAS

STATE OF KANSAS }  
 COUNTY OF SEDGWICK } SS

WE, PROFESSIONAL ENGINEERING CONSULTANTS, P.A., ENGINEERS AND SURVEYORS IN AFORESAID STATE AND COUNTY, DO HEREBY CERTIFY THAT ON THIS 15th DAY OF MAY, 2000, WE HAVE SURVEYED AND PLATTED PLAZA CENTRAL OFFICE PARK 2ND ADDITION TO WICHITA, SEDGWICK COUNTY, KANSAS, INTO LOTS AND A BLOCK, THE SAME BEING DESCRIBED AS FOLLOWS:

PARCEL 1 - LOTS 7 AND 8, GILDER'S GARDENS, SEDGWICK COUNTY, KANSAS, EXCEPT THE NORTH 10 FEET OF LOT 7 FOR ROAD, AND EXCEPT THE EAST 15 FEET OF LOT 7 FOR ROAD, EXCEPT THE NORTH 15 FEET AND THE EAST 15 FEET OF LOT 8 FOR ROAD.  
 PARCEL 2 - THE NORTH 660 FEET OF THE EAST 10 ACRES OF THE NORTH HALF OF THE NORTHWEST QUARTER OF SECTION 22, TOWNSHIP 27 SOUTH, RANGE 2 EAST OF THE SIXTH PRINCIPAL MERIDIAN, SEDGWICK COUNTY, KANSAS, EXCEPT THE NORTH 50 FEET FOR ROAD.

ALL PORTIONS OF LOTS 7 AND 8, GILDER'S GARDENS, SEDGWICK COUNTY, KANSAS, TOGETHER WITH THE EASEMENTS FOR RIGHT-OF-WAY AS PER FILM 1712, PAGE 610, FILM 1563, PAGE 0039 AND FILM 1567, PAGE 0840, AND EASEMENTS FOR SANITARY SEWER AS PER FILM 1567, PAGE 0837 AND FILM 1567, PAGE 0848, AND TEMPORARY CONSTRUCTION EASEMENTS AS PER FILM 1563, PAGE 0040, FILM 1567, PAGE 0833, FILM 1567, PAGE 0634 AND FILM 1567, PAGE 0639 WITHIN THE ABOVE DESCRIBED TRACT ARE HEREBY VACATED AND REPLATTED BY VIRTUE OF KSA 12-512(b) AMENDED.

*James R. Beckett*  
 5/1/00

JAMES R. BECKETT, R.L.S. NO. 832  
 PROFESSIONAL ENGINEERING CONSULTANTS, P.A.

KNOW ALL MEN BY THESE PRESENTS THAT WE, THE UNDERSIGNED PROPERTY OWNERS OF THE LAND AS ABOVE SET FORTH IN THE SURVEYOR'S CERTIFICATE, HAVE CAUSED THE LAND TO BE SURVEYED AND PLATTED INTO LOTS AND A BLOCK, THE SAME TO BE KNOWN AS PLAZA CENTRAL OFFICE PARK 2ND ADDITION TO WICHITA, SEDGWICK COUNTY, KANSAS. EASEMENTS FOR THE CONSTRUCTION AND MAINTENANCE OF PUBLIC UTILITIES AND DRAINAGE ARE HEREBY GRANTED.

ALL ABUTTER'S RIGHT OF ACCESS TO AND FROM CENTRAL AND JACKSON OVER AND ACROSS THE NORTH AND EAST LINES OF BLOCK 1 ARE HEREBY GRANTED TO THE CITY OF WICHITA PROVIDED HOWEVER THAT LOT 4 SHALL HAVE ACCESS TO CENTRAL AT ONE LOCATION AS SHOWN AND JACKSON AT TWO LOCATIONS AS SHOWN. LOTS 1 AND 2 SHALL HAVE ACCESS TO CENTRAL VIA THE JOINT ACCESS EASEMENT. LOT 3 SHALL HAVE ACCESS TO JACKSON VIA THE JOINT ACCESS EASEMENT.

A DRAINAGE PLAN HAS BEEN APPROVED FOR THIS PLAT. ALL DRAINAGE EASEMENTS AND RIGHTS-OF-WAY SHALL REMAIN AT ESTABLISHED GRADES AND UNOBSERVED TO ALLOW FOR THE CONVEYANCE OF STORM WATER, UNLESS MODIFIED WITH THE APPROVAL OF THE CITY ENGINEER.

THIS ADDITION IS SUBJECT TO THE CONDITIONS OF THE PROTECTIVE OVERLAY DISTRICT #51.

OWNER: PLAZA CENTRAL OFFICE PARK, INC.

BY: *John D. Greenstreet*  
 JOHN D. GREENSTREET, PRESIDENT

STATE OF KANSAS }  
 COUNTY OF SEDGWICK } SS

THIS INSTRUMENT WAS ACKNOWLEDGED BEFORE ME ON THIS 17th DAY OF MAY, 2000, BY JOHN D. GREENSTREET, PRESIDENT.

*Gary L. Wiley*  
 GARY L. WILEY, NOTARY PUBLIC

MY APPOINTMENT EXPIRES: Jan 15, 2001

WE, ALCON CONSTRUCTION, L.L.C., HOLDER OF A MORTGAGE ON A PORTION OF THE ABOVE DESCRIBED PROPERTY, DO HEREBY CONSENT TO THE PLATTING OF PLAZA CENTRAL OFFICE PARK 2ND ADDITION TO WICHITA, SEDGWICK COUNTY, KANSAS.

BY: *Alfred A. Caro*  
 ALFRED A. CARO, MANAGING MEMBER

STATE OF KANSAS }  
 COUNTY OF SEDGWICK } SS

THIS INSTRUMENT WAS ACKNOWLEDGED BEFORE ME ON THIS 24th DAY OF MAY, 2000, BY ALFRED A. CARO, MANAGING MEMBER.

*Gary L. Wiley*  
 GARY L. WILEY, NOTARY PUBLIC

MY APPOINTMENT EXPIRES: Jan 15, 2001

I, GARY MOORE, AN INDIVIDUAL, HOLDER OF A MORTGAGE ON A PORTION OF THE ABOVE DESCRIBED PROPERTY, DO HEREBY CONSENT TO THE PLATTING OF PLAZA CENTRAL OFFICE PARK 2ND ADDITION TO WICHITA, SEDGWICK COUNTY, KANSAS.

BY: *Gary Moore*  
 GARY MOORE

STATE OF KANSAS }  
 COUNTY OF SEDGWICK } SS

THIS INSTRUMENT WAS ACKNOWLEDGED BEFORE ME ON THIS 24th DAY OF MAY, 2000, BY GARY MOORE, AN INDIVIDUAL.

*Gary L. Wiley*  
 GARY L. WILEY, NOTARY PUBLIC

MY APPOINTMENT EXPIRES: Jan 15, 2001

THIS PLAT OF PLAZA CENTRAL OFFICE PARK 2ND ADDITION HAS BEEN SUBMITTED TO AND APPROVED BY THE WICHITA-SEDGWICK COUNTY METROPOLITAN AREA PLANNING COMMISSION, WICHITA, KANSAS.

DATED THIS 23RD DAY OF MARCH, 2000.

WICHITA-SEDGWICK COUNTY METROPOLITAN AREA PLANNING COMMISSION

BY: \_\_\_\_\_, CHAIRMAN  
 FRANCIS M. GAROFALO

BY: \_\_\_\_\_, SECRETARY  
 MARVIN S. KROUT

REVIEWED IN ACCORDANCE WITH K.S.A. 58-2005 ON THIS \_\_\_\_\_ DAY OF \_\_\_\_\_, 2000.

TRICIA L. ROBELLO, LS #1246  
 DEPUTY COUNTY SURVEYOR  
 SEDGWICK COUNTY KANSAS

THIS PLAT IS APPROVED AND ALL DEDICATIONS SHOWN HEREON, IF ANY ARE ACCEPTED BY THE CITY COUNCIL OF THE CITY OF WICHITA, KANSAS, THIS \_\_\_\_\_ DAY OF \_\_\_\_\_, 2000.

BOB KNIGHT, MAYOR

PAT BURNETT, CITY CLERK

ENTERED ON TRANSFER RECORD THIS \_\_\_\_\_ DAY OF \_\_\_\_\_, 2000.

JAMES ALFORD, COUNTY CLERK

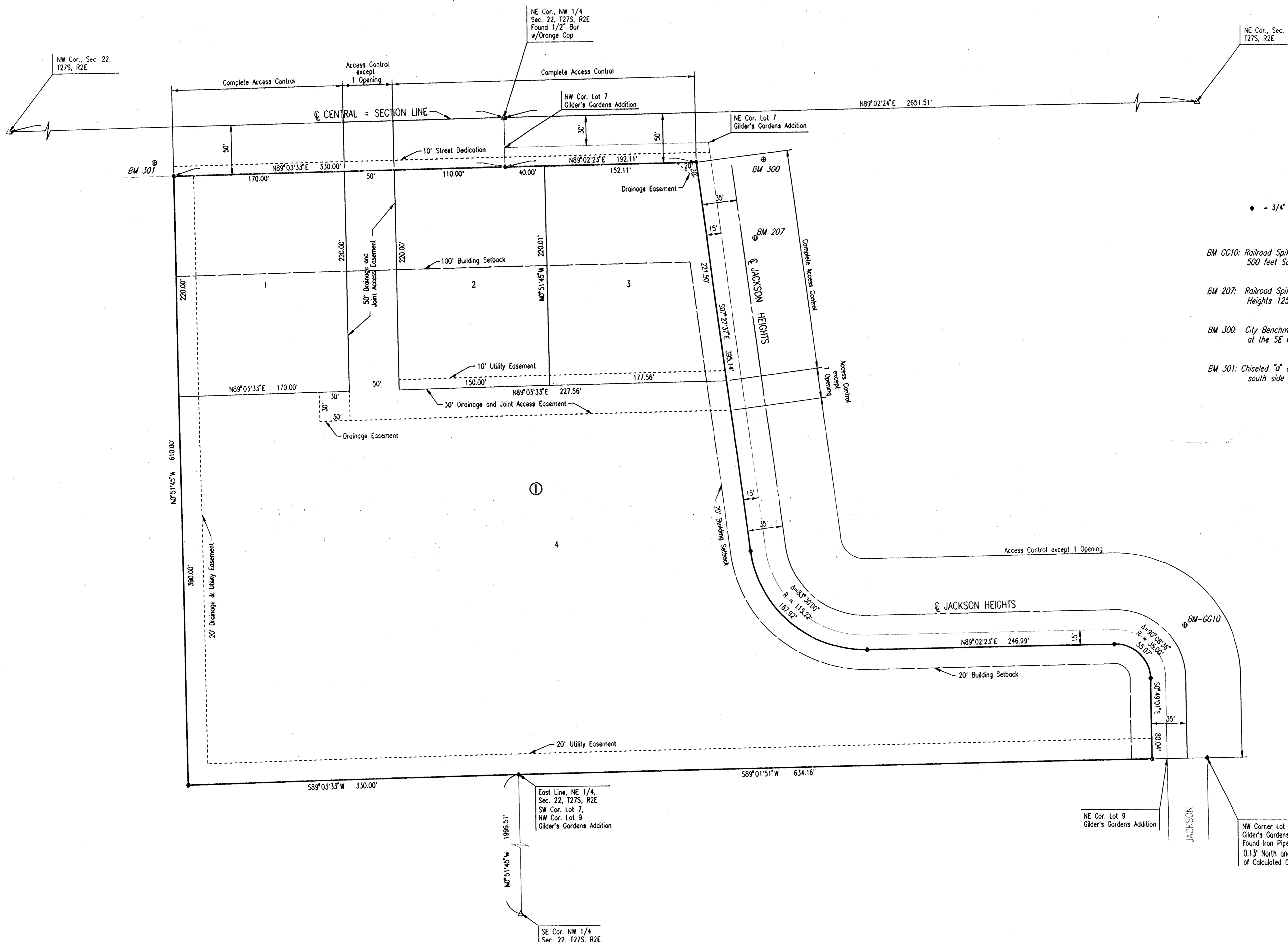
THIS IS TO CERTIFY THAT THIS INSTRUMENT WAS FILED FOR RECORD IN THE REGISTER OF DEEDS OFFICE AT \_\_\_\_\_ M., ON THE \_\_\_\_\_ DAY OF \_\_\_\_\_, 2000.

BILL WEEK, REGISTER OF DEEDS

LINDA KIZZIRE, DEPUTY

# PLAZA CENTRAL OFFICE PARK 2ND ADDITION

## TO WICHITA, SEDGWICK COUNTY, KANSAS



SCALE: 1" = 50'

● = 3/4" IRON PIPE W/PEC CAP UNLESS NOTED OTHERWISE

- BM GG10: Railroad Spike in S.W. Face of Power Pole at Curve in Jackson Heights, 500 feet South of Central Avenue. Elev.=1354.08 N.G.V.D.
- BM 207: Railroad Spike in East Face of 18" Cottonwood, East side of Jackson Heights 125 feet south of Central Avenue. Elev.=1347.21 N.G.V.D.
- BM 300: City Benchmark Disc at the W. End of the Conc. Headwall of RCBC at the SE Cor. Central Ave. and Jackson Heights. Elev.=1349.06 N.G.V.D.
- BM 301: Chiseled "d" on the North End of the Conc. Wall of the Area Inlet, south side of Central Avenue and 550± West of Jackson Heights. Elev.=1351.40 N.G.V.D.

THIS ADDITION IS SUBJECT TO THE CONDITIONS OF THE PROTECTIVE OVERLAY DISTRICT #51

DSNR: GJM OPER: GJM SCALE: 1"=50.00  
 G:\1995\98742\Plaza Central Office Park 2nd\dwg\FINAL PLAT 05-01-2000 04:39:50 pm