

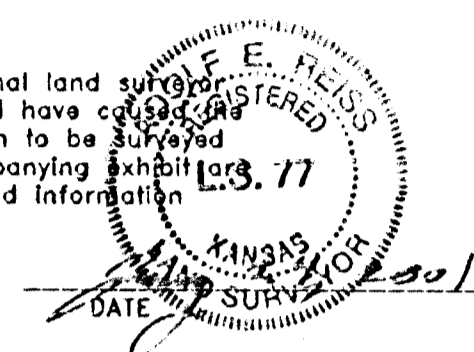
LEGAL DESCRIPTION

A tract of land located in the southeast quarter of Section 29, T27S, R1W of the 6th P.M., Sedgwick County, Kansas and a replat of a portion of Reserve "A", Westport Addition, Sedgwick County, Kansas being described as beginning at a point lying 50 feet west of the east line of said southeast quarter and the north line of the A. T. & S.F. Railroad right-of-way; thence north parallel to the east line of said southeast quarter on an assumed bearing of N 0°00'00" E a distance of 100 feet; thence S 77°20'03" W on the south line of Wolf Creek Addition, Wichita, Kansas, 320 feet; thence S 0°00'00" E, 100 feet to a point on the north line of said railroad right-of-way; thence N 77°20'03" E on said railroad right-of-way a distance of 320 feet to the point of beginning.

STATE OF KANSAS }
COUNTY OF SEDGWICK } ss

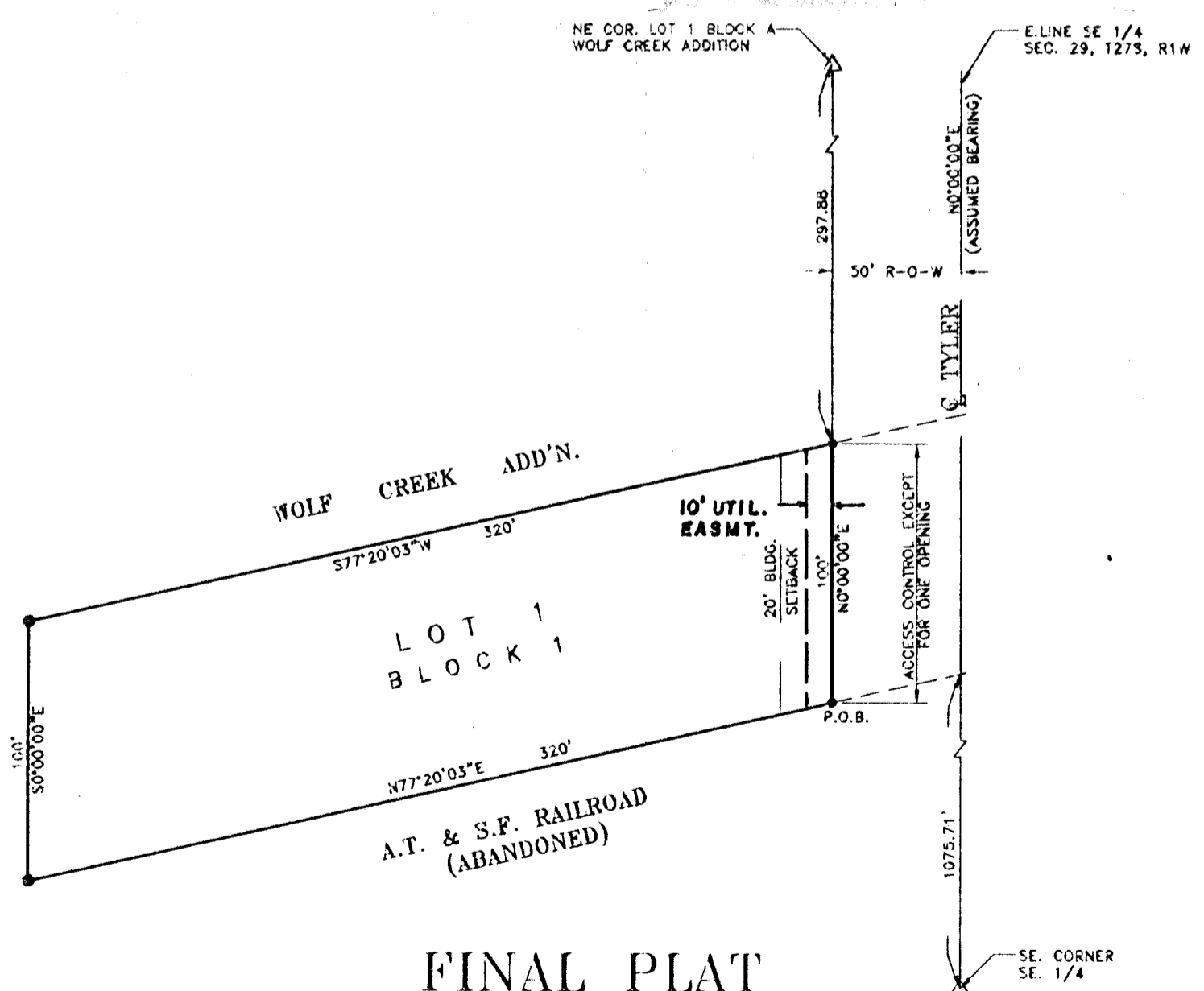
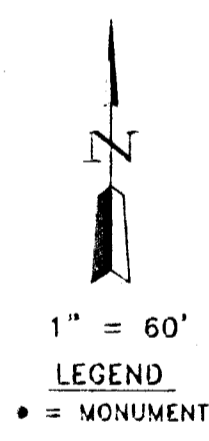
I, Adolf E. Reiss, being a duly licensed professional land surveyor in said County and State, do hereby certify that I have caused the tract of land as set forth in the Legal Description to be surveyed and platted and that said survey and the accompanying exhibit are true and correct to the best of my knowledge and information available.

ADOLF E. REISS LS#77



Know all men by these presents that Cecil E. Schniepp and Ruth Schniepp, Husband and Wife have caused the tract of land as set forth in the Legal Description to be surveyed and platted into a lot and a block to be known as Schniepp 2nd Addition, Wichita, Sedgwick County, Kansas. Easements are hereby granted as indicated for utility construction and maintenance. Access control as indicated on the face of the plat is hereby granted to the appropriate governing body. A drainage plan has been developed for the plat known as Schniepp 2nd Addition and all drainage easements, rights-of-way or reserves shall remain at established grades or as modified with the approval of the City Engineer and unobstructed to allow for the conveyance of stormwater.

Cecil E. Schniepp
CECIL E. SCHNIEPP
Ruth Schniepp
RUTH SCHNIEPP



FINAL PLAT
SCHNIEPP 2ND ADDITION
WICHITA, SEDGWICK COUNTY, KANSAS
2001

STATE OF KANSAS }
COUNTY OF SEDGWICK } ss

The foregoing instrument was acknowledged before me this _____ day of _____, 2001 by Cecil E. Schniepp and Ruth Schniepp, Husband and Wife.

_____, Notary Public

My Appointment Expires: _____

This plat of Schniepp 2nd Addition, Wichita, Sedgwick County, Kansas has been submitted to and approved by the Wichita-Sedgwick County Metropolitan Area Planning Commission, Wichita, Kansas.

Dated this _____ day of _____, 2000.

_____, Chairman

FRANK GAROFALO

_____, Secretary

MARVIN S. KROUT

Reviewed in accordance with K.S.A. 58-2005 on this _____ of _____, 2001.

TRICIA L. ROBELLO, LS #1246
Deputy County Surveyor
Sedgwick County, Kansas

This plat has been approved and accepted by the City Council of the City of Wichita, Kansas this _____ day of _____, 2001.

_____, Mayor

BOB KNIGHT

_____, City Clerk

PAT BURNETT

Entered on transfer record this _____ day of _____, 2001.

_____, County Clerk

JAMES ALFORD

STATE OF KANSAS }
COUNTY OF SEDGWICK } ss

This is to certify that this instrument was filed for record in the Register of Deeds office at _____ o'clock _____ M. on the _____ day of _____, 2001.

_____, Register of Deeds

BILL MEEK

_____, Deputy

LINDA KIZZIRE