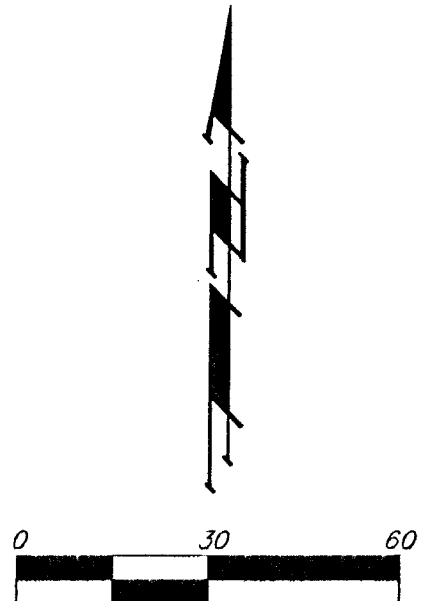


# SEALPAK 2ND ADDITION WICHITA, SEDGWICK COUNTY, KANSAS



LOT	BLOCK	ELEVATION CITY DATUM
1	A	137.0

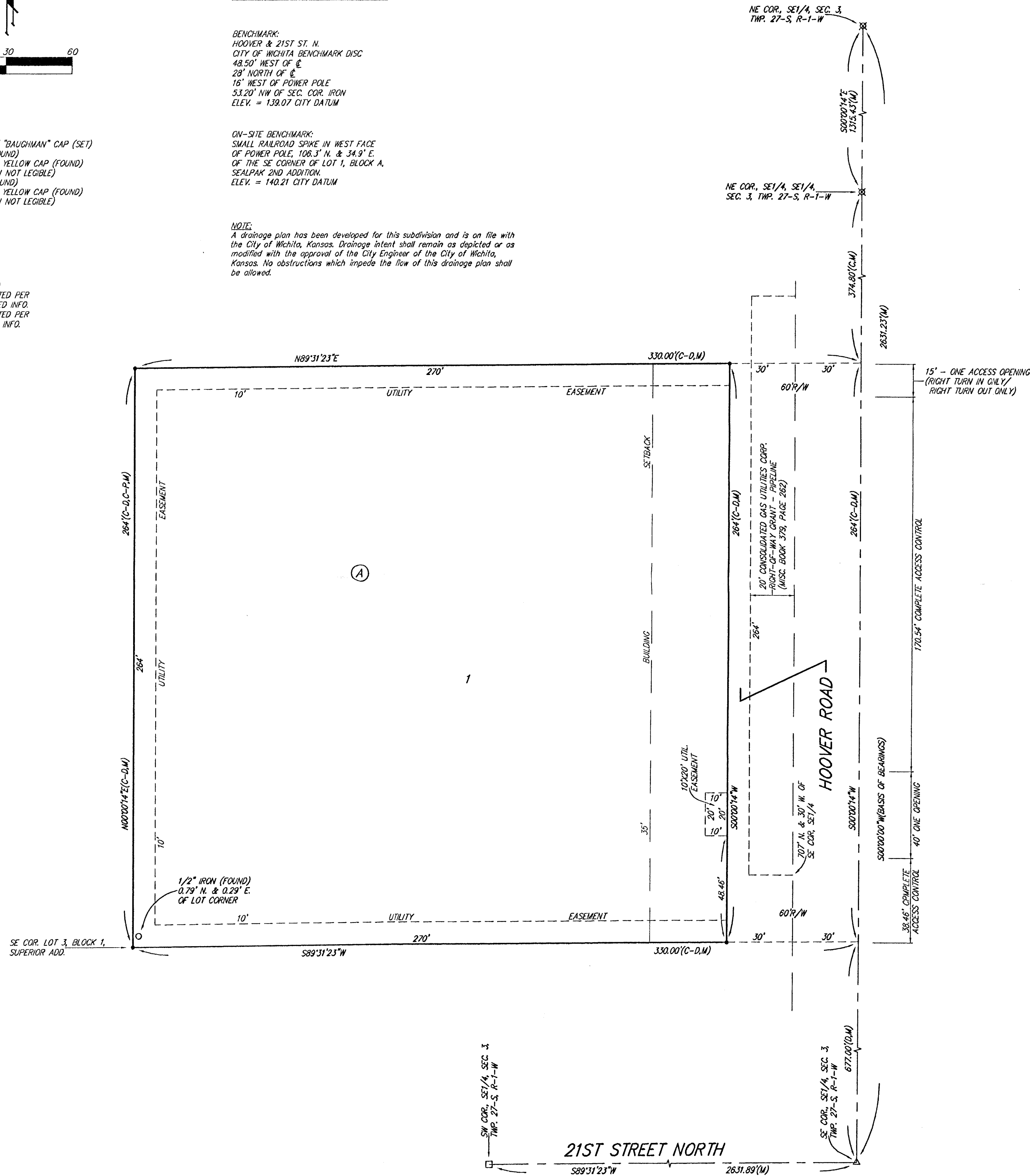
**BENCHMARK:**  
HOOVER & 21ST ST. N.  
CITY OF WICHITA BENCHMARK DISC  
48.50' WEST OF E.  
28' NORTH OF E.  
15' WEST OF POWER POLE  
53.20' NW OF SEC. COR. IRON  
ELEV. = 139.07 CITY DATUM

**ON-SITE BENCHMARK:**  
SMALL RAILROAD SPIKE IN WEST FACE  
OF POWER POLE, 108.3' N. & 34.9' E.  
OF THE SE CORNER OF LOT 1, BLOCK A,  
SEALPAK 2ND ADDITION.  
ELEV. = 140.21 CITY DATUM

**NOTE:**  
A drainage plan has been developed for this subdivision and is on file with the City of Wichita, Kansas. Drainage intent shall remain as depicted or as modified with the approval of the City Engineer of the City of Wichita, Kansas. No obstructions which impede the flow of this drainage plan shall be allowed.

- = #4 REBAR W/ "BAUGHMAN" CAP (SET)
- = 1/2" IRON (FOUND)
- ⊗ = #6 REBAR W/ YELLOW CAP (FOUND) (IDENTIFICATION NOT LEGIBLE)
- △ = #6 REBAR (FOUND)
- = #4 REBAR W/ YELLOW CAP (FOUND) (IDENTIFICATION NOT LEGIBLE)

- (M) = MEASURED
- (D) = DESCRIBED
- (C) = CALCULATED
- (C-D) = CALCULATED PER DESCRIBED INFO
- (C-P) = CALCULATED PER PLATTED INFO



State of Kansas) SS  
Sedgwick County) We, Baughman Company, P.A., Surveyors in aforesaid county and state do hereby certify that we have surveyed and platted "SEALPAK 2ND ADDITION", Wichita, Sedgwick County, Kansas and that the accompanying plat is a true and correct exhibit of the property described as follows: A tract of land in the SE 1/4 of Sec. 3, Twp. 27-S, R-1-W of the 6th P.M., Sedgwick County, Kansas described as follows: Beginning 677 feet north of the SE corner of said SE 1/4; thence west, 20 rods; thence north, 16 rods; thence east, 20 rods; thence south, 16 rods to the place of beginning.

Existing public easements and dedications being vacated by virtue of K.S.A. 12-512(b).

Baughman Company, P.A.

Michael A. Conrey 10-15-2003 Surveyor  
Michael G. Conrey

This plat of "SEALPAK 2ND ADDITION", Wichita, Sedgwick County, Kansas has been submitted to and approved by the Wichita-Sedgwick County Metropolitan Area Planning Commission, Wichita, Kansas.

Dated this \_\_\_\_\_ day of \_\_\_\_\_, 2003.  
Wichita-Sedgwick County Metropolitan Area Planning Commission

\_\_\_\_\_, Chair  
Bernard A. Hentzen

\_\_\_\_\_, Secretary  
Dale Miller

This plat approved and all dedications shown hereon accepted by the City Council of the City of Wichita, Kansas, this \_\_\_\_\_ day of \_\_\_\_\_, 2003.

\_\_\_\_\_, Mayor  
Carlos Mayans

\_\_\_\_\_, City Clerk  
Karen Schofield

Know all men by these presents that we, the undersigned, have caused the land in the surveyors certificate to be platted into a Lot, a Block, and a Street, to be known as "SEALPAK 2ND ADDITION", Wichita, Sedgwick County, Kansas. The utility easements are hereby granted for the construction and maintenance of all public utilities. The street is hereby dedicated to and for the use of the public. Access controls shall be as depicted on the face of the plat and are hereby granted to the City of Wichita, Kansas. The Minimum Building Pad Elevation for the lowest opening to the structures on Lot 1, Block A, shall be 137.00 City Datum.

Donald H. Smith  
Donald H. Smith

Reviewed in accordance with K.S.A. 58-2005 on this \_\_\_\_\_ day of \_\_\_\_\_, 2003.

Tricia L. Robello, L.S. #1246  
Deputy County Surveyor  
Sedgwick County, Kansas

Entered on transfer record this \_\_\_\_\_ day of \_\_\_\_\_, 2003.

\_\_\_\_\_, County Clerk  
Don Broce

State of Kansas) SS  
Sedgwick County) This is to certify that this plat has been filed for record in the office of the Register of Deeds, this \_\_\_\_\_ day of \_\_\_\_\_, 2003 at \_\_\_\_\_ o'clock \_\_\_\_\_ M.; and is duly recorded.

\_\_\_\_\_, Register of Deeds  
Bill Meek

\_\_\_\_\_, Deputy  
Linda Kizzire

State of Kansas) SS  
Sedgwick County) The foregoing instrument acknowledged before me, this 15th day of October, 2003, by Donald H. Smith, a single person.

SUSAN K. MONETTE  
Notary Public - State of Kansas  
My Exp. 11-9-03

Susan K. Monette  
Notary Public

My App'l. Exp. 11-9-03