

# SECURITY STORAGE HILLSIDE ADDITION

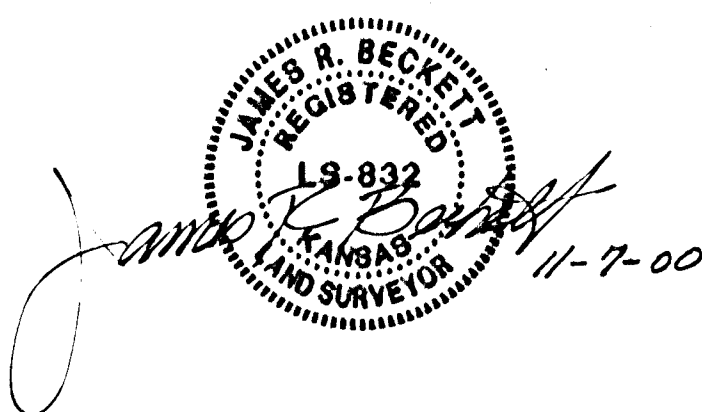
## TO WICHITA, SEDGWICK COUNTY, KANSAS

STATE OF KANSAS }  
 COUNTY OF SEDGWICK } SS

I, JAMES R. BECKETT, A REGISTERED LAND SURVEYOR IN AFORESAID STATE AND COUNTY DO HEREBY CERTIFY THAT ON THIS 27th DAY OF November, 2000, I HAVE CAUSED TO BE SURVEYED AND PLATTED SECURITY STORAGE HILLSIDE ADDITION TO WICHITA, SEDGWICK COUNTY, KANSAS INTO A LOT AND A BLOCK, THE SAME BEING DESCRIBED AS:

PART OF LOTS 1, 3, 5, 7, 9, 11 AND 13 ON HILLSIDE AVE., TOGETHER WITH THE E 1/2 OF VACATED ALLEY ADJACENT ON THE WEST AND LOT 12 AND PART OF LOTS 14, 16, AND 18 ON LORRAINE AVE., TOGETHER WITH THE W 1/2 OF VACATED ALLEY ADJACENT ON THE EAST AND LOTS 11, 13, 15, 17, AND PART OF LOTS 19 AND 21 ON LORRAINE AVE., TOGETHER WITH THE E 1/2 OF VACATED ALLEY ADJACENT ON THE WEST AND LOTS 16, 18, 20 AND 22 ON CHAUTAUQUA AVE., TOGETHER WITH THE W 1/2 OF VACATED ALLEY ADJACENT ON THE EAST AND PART OF LORRAINE AVE., ALL IN SCHUMACHER'S SUBDIVISION OF LOTS 1 AND 2, BLOCK 4, IN IMBODEN AND OLVERS ADDITION TO THE CITY OF WICHITA, KANSAS, AND PART OF LOTS 20 AND 22 ON CHAUTAUQUA AVE., TOGETHER WITH PART OF VACATED ALLEY LYING EAST OF AND ADJACENT TO SAID LOT 22, ALL IN DONLAV'S SUBDIVISION OF LOTS 3 AND 4, IN IMBODEN AND OLVERS ADDITION TO WICHITA, KANSAS, ALL BEING MORE PARTICULARLY DESCRIBED AS BEGINNING AT A POINT ON THE WEST LINE OF LOT 20 ON CHAUTAUQUA AVE. IN SAID DONLAV'S SUBDIVISION, SAID POINT BEING 21.85 FEET SOUTH OF THE NW CORNER THEREOF; THENCE NORTH, ALONG THE EAST LINE OF SAID CHAUTAUQUA AVE., 146.85 FEET TO THE NW CORNER OF LOT 16 ON CHAUTAUQUA AVE., IN SAID SCHUMACHER'S SUBDIVISION; THENCE EAST ALONG THE NORTH LINE OF SAID LAST DESCRIBED LOT 16 AND EXTENDED, 137.02 FEET TO THE CENTER-LINE OF THE VACATED ALLEY ADJACENT TO SAID LOT 16; THENCE NORTH ALONG THE CENTER-LINE OF SAID VACATED ALLEY, 50 FEET TO A POINT ON THE NORTH LINE OF LOT 11 ON LORRAINE AVE., IN SAID SCHUMACHER'S SUBDIVISION, EXTENDED WEST; THENCE EAST ALONG THE NORTH LINE OF SAID LAST DESCRIBED LOT 11, AND THE EXTENSIONS OF THE SAME, 163.52 FEET TO THE CENTER-LINE OF SAID LORRAINE AVE., THENCE EAST ALONG THE NORTH LINE OF LOT 12 ON LORRAINE AVE., IN SAID SCHUMACHER'S SUBDIVISION AND THE EXTENSIONS OF THE SAME, 163.5 FEET TO THE CENTER-LINE OF THE VACATED ALLEY ADJACENT TO SAID LOT 12; THENCE NORTH ALONG THE CENTER-LINE OF SAID VACATED ALLEY, 143 FEET TO A POINT ON THE NORTH LINE OF LOT 1 ON HILLSIDE AVE., IN SAID SCHUMACHER'S SUBDIVISION, EXTENDED WEST; THENCE EAST ALONG THE NORTH LINE OF SAID LAST DESCRIBED LOT 1, AND SAID EXTENSION, 117.88 FEET TO A POINT 110.58 FEET EAST OF THE NW CORNER OF SAID LOT 1; THENCE SOUTH PARALLEL WITH THE WEST LINE OF LOTS 1, 3, AND 5 ON HILLSIDE AVE., IN SAID SCHUMACHER'S SUBDIVISION, 83 FEET TO THE POINT OF CURVATURE OF A CURVE TO THE RIGHT, HAVING A RADIUS OF 173 FEET; THENCE SOUTHWESTERLY ALONG SAID CURVE AND THROUGH A CENTRAL ANGLE OF 19°09'25" AN ARC DISTANCE OF 57.84 FEET; THENCE SOUTHWESTERLY, 608.95 FEET TO THE POINT OF BEGINNING, TOGETHER WITH LOT 1, 400 LORRAINE ADDITION, WICHITA, SEDGWICK COUNTY, KANSAS.

ALL PORTIONS OF THE ABOVE REFERENCED SUBDIVISIONS, STREET, LOTS AND ALLEYS, TOGETHER WITH THE CONTINGENT DEDICATION AS SHOWN IN BOOK 1535, PAGE 269 WITHIN THE ABOVE DESCRIBED TRACT ARE HEREBY VACATED AND REPLATED BY VIRTUE OF KSA 12-512(b) AMENDED.



JAMES R. BECKETT, R.L.S. NO. 832  
 PROFESSIONAL ENGINEERING CONSULTANTS, P.A.

KNOW ALL MEN BY THESE PRESENTS THAT WE, THE UNDERSIGNED PROPERTY OWNERS OF THE LAND AS ABOVE SET FORTH IN THE SURVEYOR'S CERTIFICATE, HAVE CAUSED THE LAND TO BE SURVEYED AND PLATTED INTO A LOT AND A BLOCK, THE SAME TO BE KNOWN AS SECURITY STORAGE HILLSIDE ADDITION TO WICHITA, SEDGWICK COUNTY, KANSAS.

EASEMENTS AS INDICATED FOR THE CONSTRUCTION AND MAINTENANCE OF PUBLIC UTILITIES ARE HEREBY GRANTED.

ALL ABUTTERS' RIGHTS-OF-ACCESS TO AND FROM LEWIS, HILLSIDE, CHAUTAUQUA AND KELLOGG OVER AND ACROSS THE NORTH, EAST, WEST AND SOUTH LINES OF BLOCK 1, ARE HEREBY GRANTED TO THE CITY OF WICHITA, PROVIDED HOWEVER THAT THERE SHALL BE ACCESS TO LEWIS AT ONE LOCATION AS SHOWN.

FOR ADDITIONAL INFORMATION AND ADDITIONAL BUILDING SETBACKS, SEE PLANNED UNIT DEVELOPMENT P.U.D. 2000-00002 ON FILE AT THE WICHITA-SEDGWICK COUNTY METROPOLITAN AREA PLANNING DEPARTMENT, WICHITA, KANSAS.

A DRAINAGE PLAN HAS BEEN APPROVED FOR THIS PLAT. ALL DRAINAGE EASEMENTS AND RIGHTS-OF-WAY SHALL REMAIN AT ESTABLISHED GRADES AND UNOBSTRUCTED TO ALLOW FOR THE CONVEYANCE OF STORMWATER, UNLESS MODIFIED WITH THE APPROVAL OF THE APPLICABLE CITY OR COUNTY ENGINEER.

OWNERS:

*H. Stan Chilton*  
 H. STAN CHILTON  
*Joyce E. Chilton*  
 JOYCE E. CHILTON

THE CITY OF WICHITA, A MUNICIPAL CORPORATION

BOB KNIGHT, MAYOR

PAT BURNETT, CITY CLERK

STATE OF KANSAS }  
 COUNTY OF SEDGWICK } SS

THIS INSTRUMENT WAS ACKNOWLEDGED BEFORE ME ON THIS 13th DAY OF November, 2000, BY H. STAN CHILTON AND JOYCE E. CHILTON, HUSBAND AND WIFE.

*Gary L. Wiley*  
 Gary L. Wiley  
 Gary L. Wiley  
 NOTARY PUBLIC  
 MY APPOINTMENT EXPIRES: 4/15/01



STATE OF KANSAS }  
 COUNTY OF SEDGWICK } SS

THIS INSTRUMENT WAS ACKNOWLEDGED BEFORE ME ON THIS \_\_\_\_\_ DAY OF \_\_\_\_\_, 2000, BY BOB KNIGHT, MAYOR AND PAT BURNETT, CITY CLERK, OF THE CITY OF WICHITA, A MUNICIPAL CORPORATION.

\_\_\_\_\_, NOTARY PUBLIC

MY APPOINTMENT EXPIRES: \_\_\_\_\_

WE, BANK OF AMERICA, HOLDER OF A MORTGAGE ON A PORTION OF THE ABOVE DESCRIBED PROPERTY, DO HEREBY CONSENT TO THE PLATTING OF SECURITY STORAGE HILLSIDE ADDITION TO WICHITA, SEDGWICK COUNTY, KANSAS.

*Lisa M. Sheffield*  
 LISA M. SHEFFIELD, OFFICER

STATE OF KANSAS }  
 COUNTY OF SEDGWICK } SS

THIS INSTRUMENT WAS ACKNOWLEDGED BEFORE ME ON THIS 15th DAY OF November, 2000, BY LISA M. SHEFFIELD, AN OFFICER OF BANK OF AMERICA.

*Gary L. Wiley*  
 Gary L. Wiley  
 Gary L. Wiley  
 NOTARY PUBLIC  
 MY APPOINTMENT EXPIRES: 4/15/01



THIS PLAT OF SECURITY STORAGE HILLSIDE ADDITION HAS BEEN SUBMITTED TO AND APPROVED BY THE WICHITA-SEDGWICK COUNTY METROPOLITAN AREA PLANNING COMMISSION, WICHITA, KANSAS.

DATED THIS \_\_\_\_\_ DAY OF \_\_\_\_\_, 2000.

WICHITA-SEDGWICK COUNTY METROPOLITAN AREA PLANNING COMMISSION

CHRISTOPHER S. CARRAHER, CHAIRMAN

MARVIN S. KROUT, SECRETARY

REVIEWED IN ACCORDANCE WITH K.S.A. 58-2005 ON THIS \_\_\_\_\_ DAY OF \_\_\_\_\_, 2000.

TRICIA L. ROBELLO, LS #1246  
 DEPUTY COUNTY SURVEYOR  
 SEDGWICK COUNTY KANSAS

THIS PLAT IS APPROVED AND ALL DEDICATIONS SHOWN HEREON, IF ANY, ARE ACCEPTED BY THE CITY COUNCIL OF THE CITY OF WICHITA, KANSAS, THIS \_\_\_\_\_ DAY OF \_\_\_\_\_, 2000.

BOB KNIGHT, MAYOR

PAT BURNETT, CITY CLERK

ENTERED ON TRANSFER RECORD THIS \_\_\_\_\_ DAY OF \_\_\_\_\_, 2000.

JAMES ALFORD, COUNTY CLERK

THIS IS TO CERTIFY THAT THIS INSTRUMENT WAS FILED FOR RECORD IN THE REGISTER OF DEEDS OFFICE AT \_\_\_\_\_ A.M. - P.M., ON THE \_\_\_\_\_ DAY OF \_\_\_\_\_, 2000.

BILL WEEK, REGISTER OF DEEDS

LINDA KIZZURE, DEPUTY

# SECURITY STORAGE HILLSIDE ADDITION

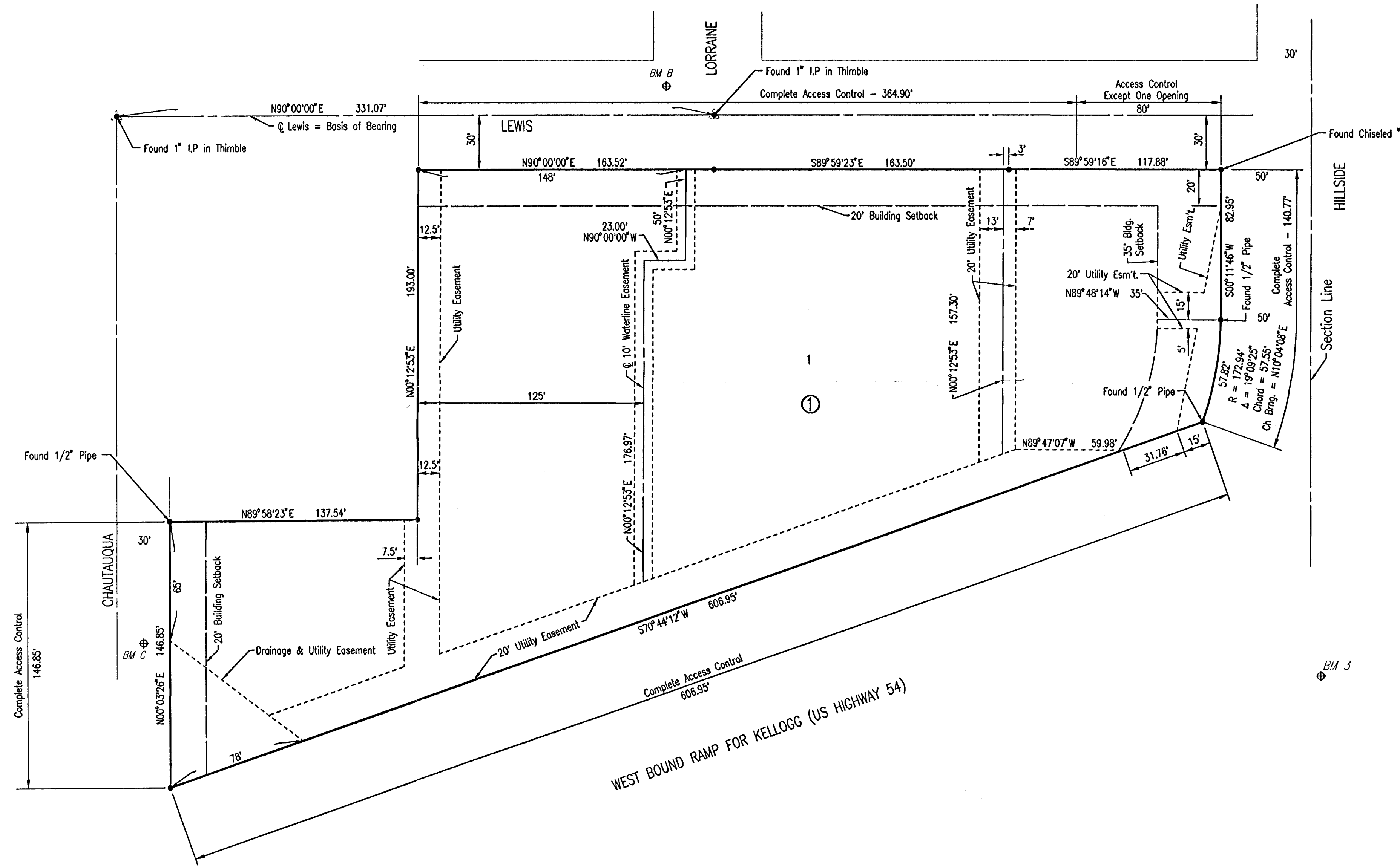
## TO WICHITA, SEDGWICK COUNTY, KANSAS



SCALE: 1" = 40'

● = 3/4" IRON PIPE W/PEC CAP UNLESS NOTED OTHERWISE

FOR ADDITIONAL INFORMATION AND ADDITIONAL BUILDING SETBACKS, SEE PLANNED UNIT DEVELOPMENT P.U.D. 2000-00002 ON FILE AT THE WICHITA-SEDGWICK COUNTY METROPOLITAN AREA PLANNING DEPARTMENT, WICHITA, KANSAS.



Datum BM: City of Wichita BM, NE corner intersection (South of Kellogg)  
Concrete Base for School Crossing Light.  
Elev. = 110.80 City Datum  
Elev. = 1298.20 N.G.V.D.

BM #3: Chiseled "d" on Top of Curb at North end median in @ Hillside, North side of Kellogg at West bound on ramp.  
Elev. = 117.05 City Datum  
Elev. = 1304.45 N.G.V.D.

BM #11: Chiseled "+" on sidewalk, West side Hillside, approx. 90' South of centerline Lewis.  
Elev. = 118.12 City Datum  
Elev. = 1305.52 N.G.V.D.

BM B: Chiseled "d" on West curb return, NW corner Lewis and Lorraine.  
Elev. = 113.43 City Datum  
Elev. = 1300.83 N.G.V.D.

BM C: Chiseled "d" at SW Corner Curb Inlet (South of 2), East side Chautauqua, approx. 285' south of Lewis.  
Elev. = 110.90 City Datum  
Elev. = 1298.30 N.G.V.D.