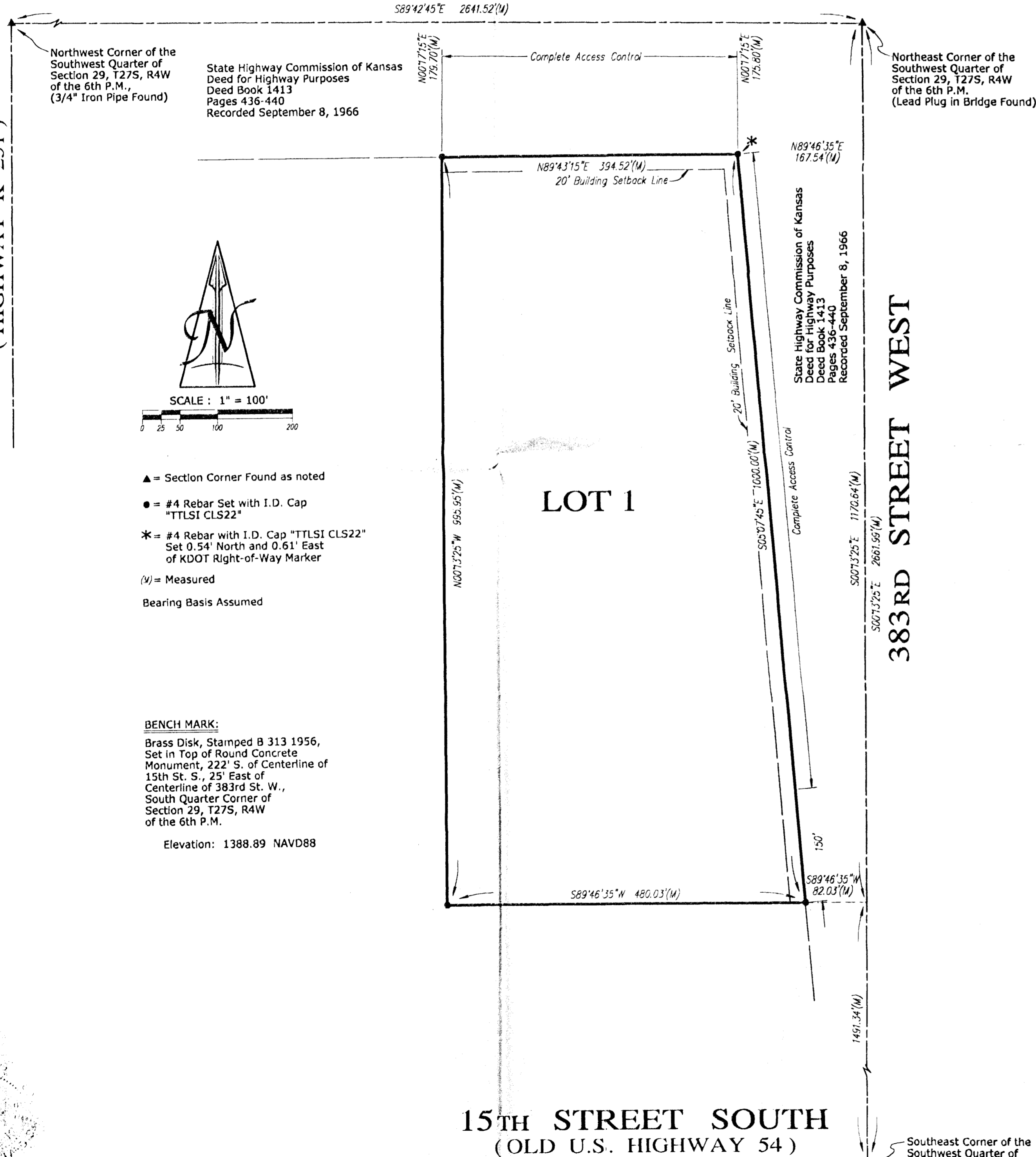


**FINAL PLAT OF  
"SEDGWICK COUNTY ELECTRIC COOPERATIVE  
ASSOCIATION ADDITION"**

SEDGWICK COUNTY, KANSAS  
IN THE SOUTHWEST QUARTER OF SECTION 29,  
TOWNSHIP 27 SOUTH, RANGE 4 WEST OF THE 6TH P.M.

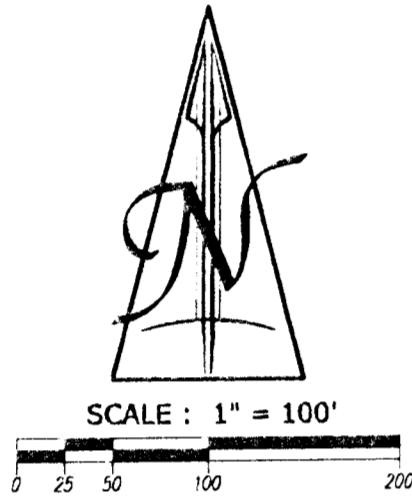
**U.S. HIGHWAY 54**

**391ST STREET WEST  
(HIGHWAY K-251)**



Northwest Corner of the Southwest Quarter of Section 29, T27S, R4W of the 6th P.M., (3/4" Iron Pipe Found)  
State Highway Commission of Kansas Deed Book 1413 Pages 436-440 Recorded September 8, 1966

Northeast Corner of the Southwest Quarter of Section 29, T27S, R4W of the 6th P.M. (Lead Plug in Bridge Found)



- ▲ = Section Corner Found as noted
  - = #4 Rebar Set with I.D. Cap "TTLSI CLS22"
  - \* = #4 Rebar with I.D. Cap "TTLSI CLS22" Set 0.54' North and 0.61' East of KDOT Right-of-Way Marker
  - (M) = Measured
- Bearing Basis Assumed

**BENCH MARK:**  
Brass Disk, Stamped B 313 1956, Set in Top of Round Concrete Monument, 222' S. of Centerline of 15th St. S., 25' East of Centerline of 383rd St. W., South Quarter Corner of Section 29, T27S, R4W of the 6th P.M.  
Elevation: 1388.89 NAVD88

**15TH STREET SOUTH  
(OLD U.S. HIGHWAY 54)**

Southeast Corner of the Southwest Quarter of Section 29, T27S, R4W of the 6th P.M. (#4 Rebar Found)

State of Kansas )  
Sedgwick County ) ss

Terra Tech Land Surveying, Inc., a corporation registered and authorized to practice Land Surveying in the State of Kansas, hereby certifies that it has surveyed and platted "SEDGWICK COUNTY ELECTRIC COOPERATIVE ASSOCIATION ADDITION", Sedgwick County, Kansas, and the accompanying plat is a true and correct exhibit of such survey described as:

A tract of land in the Southwest Quarter of Section 29, Township 27 South, Range 4 West of the Sixth Principal Meridian, Sedgwick County, Kansas, described as follows: Commencing at a point on the East line of said Southwest Quarter which is at an assumed bearing of North 0°13'25" West, a distance of 1491.34 feet from the Southeast corner of said Southwest Quarter; thence South 89°46'35" West, a distance of 82.03 feet to the Point of Beginning; thence South 89°46'35" West, a distance of 480.03 feet; thence North 0°13'25" West, a distance of 995.95 feet, more or less, to the intersection with the South right-of-way of U.S. Highway 54, as deeded in Deed Book 1413, at Pages 436-440; thence North 89°43'15" East, on said right-of-way line, a distance of 394.52 feet, to the intersection with the Westerly right-of-way line of 383rd Street West, also as deeded in Deed Book 1413, at Pages 436-440; thence South 5°07'45" East, on said right-of-way line, a distance of 1000.00 feet to the Point of Beginning.

TERRA TECH LAND SURVEYING, INC.

*Michele Webster*  
Michele Webster LS #958 Date July 16, 2002



Know all men by these presents that the undersigned, owners of the land described in the Surveyor's Certificate, have caused the same to be surveyed and platted into a Lot to be known as "SEDGWICK COUNTY ELECTRIC COOPERATIVE ASSOCIATION ADDITION", Sedgwick County, Kansas. All abutters' rights of access to or from U.S. Highway 54, over and across the North line of Lot 1, "SEDGWICK COUNTY ELECTRIC COOPERATIVE ASSOCIATION ADDITION", are hereby granted to the appropriate governing body. All abutters' rights of access to or from 383rd Street West, over and across the East line of Lot 1, EXCEPT the South 150 feet thereof, "SEDGWICK COUNTY ELECTRIC COOPERATIVE ASSOCIATION ADDITION", are hereby granted to the appropriate governing body. A drainage plan has been developed for this plat and all drainage easements, rights-of-way, or reserves shall remain at established grades or as modified with the approval of the applicable City or County Engineer, and unobstructed to allow for the conveyance of stormwater.

*Donald R. Albers* *Dorothy M. Albers*  
Donald R. Albers Dorothy M. Albers

State of Kansas )  
Sedgwick County ) ss  
This instrument was acknowledged before me this 12th day of August, 2002, by Donald R. Albers and Dorothy M. Albers.

*Karen S. Seilar*  
Karen S. Seilar, Notary Public  
My Commission Expires: \_\_\_\_\_

This plat of "SEDGWICK COUNTY ELECTRIC COOPERATIVE ASSOCIATION ADDITION", Sedgwick County, Kansas, has been submitted to and approved by the Wichita-Sedgwick County Metropolitan Area Planning Commission, Wichita, Kansas.

Dated this \_\_\_\_\_ day of \_\_\_\_\_, 2002.

**WICHITA-SEDGWICK COUNTY  
METROPOLITAN AREA PLANNING COMMISSION**

\_\_\_\_\_, Chair  
J.D. Michaelis  
\_\_\_\_\_, Secretary  
Marvin S. Krout

Reviewed in accordance with K.S.A. 58-2005 on this \_\_\_\_\_ day of \_\_\_\_\_, 2002.

Tricia L. Robello, LS#1246  
Deputy County Surveyor  
Sedgwick County, Kansas

State of Kansas )  
County of Sedgwick ) ss

The dedications shown on the plat, if any, are hereby accepted by the Board of County Commissioners, Sedgwick County, Kansas, on \_\_\_\_\_, 2002.

(Seal)  
\_\_\_\_\_, Commission Chairman  
Ben Sciortino

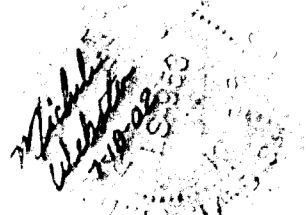
Attest: \_\_\_\_\_, County Clerk  
Don Brace

(Seal)  
Entered on transfer record this \_\_\_\_\_ day of \_\_\_\_\_, 2002.

\_\_\_\_\_, County Clerk  
Don Brace

State of Kansas )  
Sedgwick County ) ss  
This is to certify that this instrument was filed for record in the Register of Deeds Office, at \_\_\_\_\_ o'clock \_\_\_\_\_ M., on the \_\_\_\_\_ day of \_\_\_\_\_, 2002.

\_\_\_\_\_, Register of Deeds  
Bill Meek  
\_\_\_\_\_, Deputy  
Linda Kizzire



**TERRA TECH**  
LAND SURVEYING / INC.

22200 W. 63rd St. S.  
Vero, Kansas 67149  
(316) 794-2865 / 794-3273  
Fax (316) 794-3274