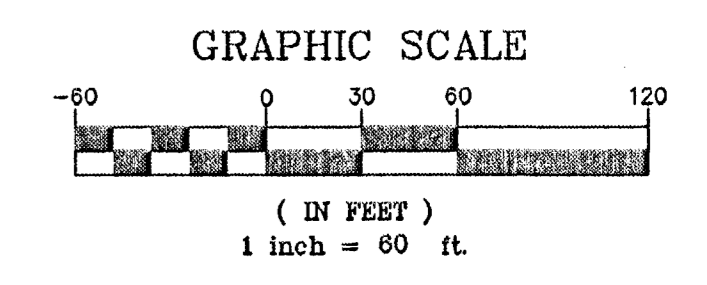
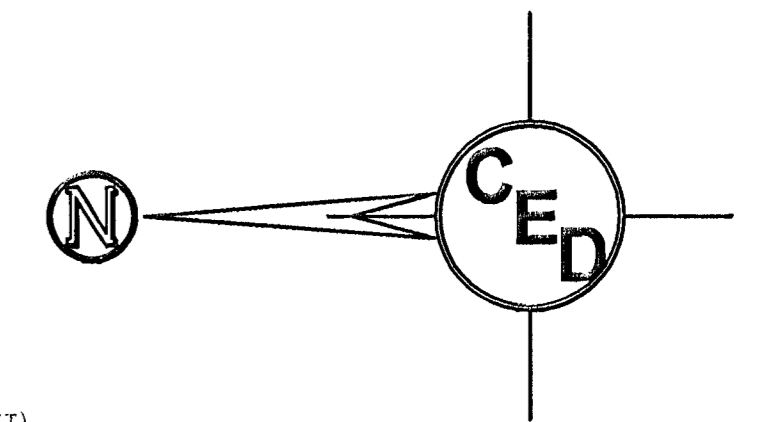
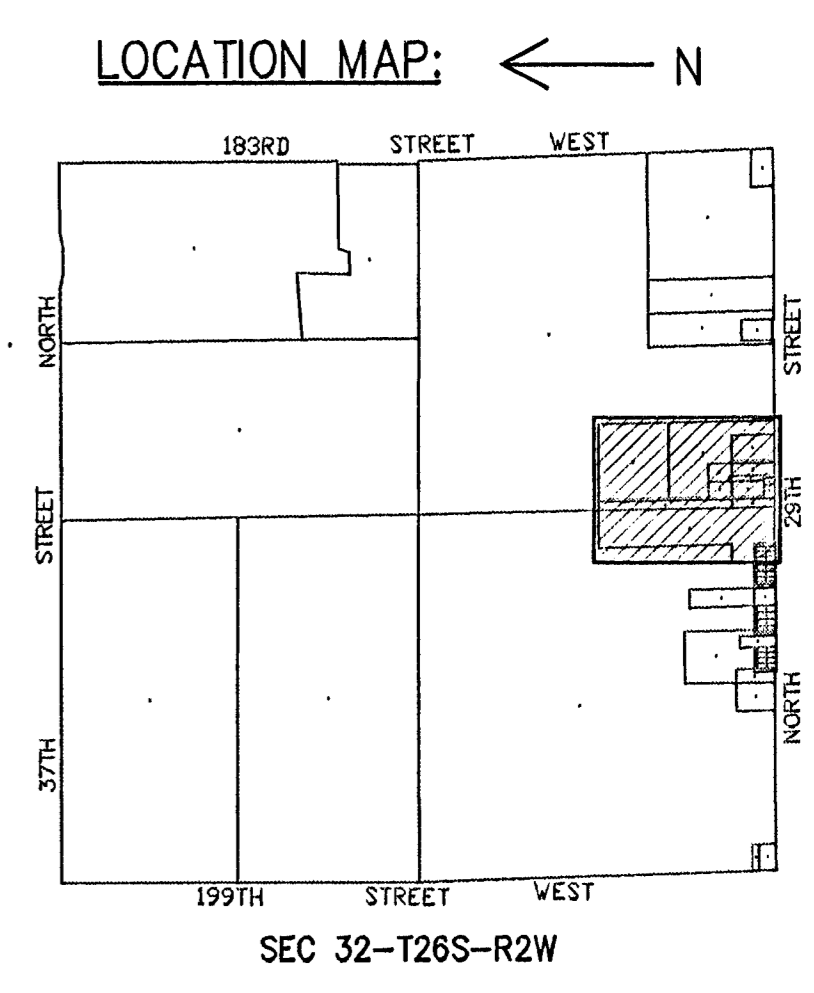


PRELIMINARY PLAT OF "ST MARK ADDITION" COLWICH, SEDGWICK COUNTY, KANSAS IN THE SE 1/4 OF SECTION 32, T26S, R2W OF THE 6TH P.M.



LEGEND:
 ● = SET 5/8" REBAR WITH ARMSTRONG CAP
 ○ = FOUND 5/8" REBAR WITH ARMSTRONG CAP
 △ = SECTION CORNER
 Date of Preparation: October 11, 2002

BENCHMARK:
 TOP OF IRON, SW COR., SE 1/4, SEC. 32-26-2W,
 ELEVATION = 1440.13 M.S.L.



LEGAL DESCRIPTION
 BEGINNING AT THE S.W. CORNER OF THE S.E. 1/4 OF SECTION 32, TOWNSHIP 26 SOUTH, RANGE 2 WEST OF THE 6TH P.M., SEDGWICK COUNTY, KANSAS; THENCE EAST ALONG THE SOUTH LINE OF SAID S.E. 1/4, HAVING AN ASSUMED BEARING OF S. 89°57'24" E., A DISTANCE OF 205.98 FEET; THENCE N. 00°46'50" W., PARALLEL WITH THE WEST LINE OF SAID S.E. 1/4, A DISTANCE OF 520.00 FEET; THENCE S. 89°57'24" E., PARALLEL WITH THE SOUTH LINE OF SAID S.E. 1/4, A DISTANCE OF 134.00 FEET; THENCE S. 00°46'50" E., PARALLEL WITH THE WEST LINE OF SAID S.E. 1/4, A DISTANCE OF 520.00 FEET TO A POINT ON THE SOUTH LINE OF SAID S.E. 1/4; THENCE ALONG THE SOUTH LINE HAVING AN ASSUMED BEARING OF S. 89°57'24" E., A DISTANCE OF 308.58 FEET; THENCE N. 00°46'50" W., A DISTANCE OF 1314.65 FEET; THENCE N. 89°53'41" W., A DISTANCE OF 948.57 FEET; THENCE S. 00°46'50" E., A DISTANCE OF 970.53 FEET; THENCE S. 89°56'32" W., A DISTANCE OF 131.00 FEET; THENCE S. 00°46'50" E., A DISTANCE OF 345.00 FEET TO A POINT IN THE SOUTH LINE OF THE S.W. 1/4 OF SAID SECTION 32; THENCE S. 89°56'32" E., ALONG THE SOUTH LINE OF SAID S.W. 1/4, A DISTANCE OF 431.00 FEET TO THE POINT OF BEGINNING, EXCEPT THE SOUTH 60.00 FEET THEREOF. A TRACT CONTAINING 28.07 ACRES, MORE OR LESS.

NOTE:
 Survey information from
 Moehring & Associates Consulting Engineers
 433 S. Hydraulic
 Wichita, KS (316) 263-8291
 Dated May 02, 2002.

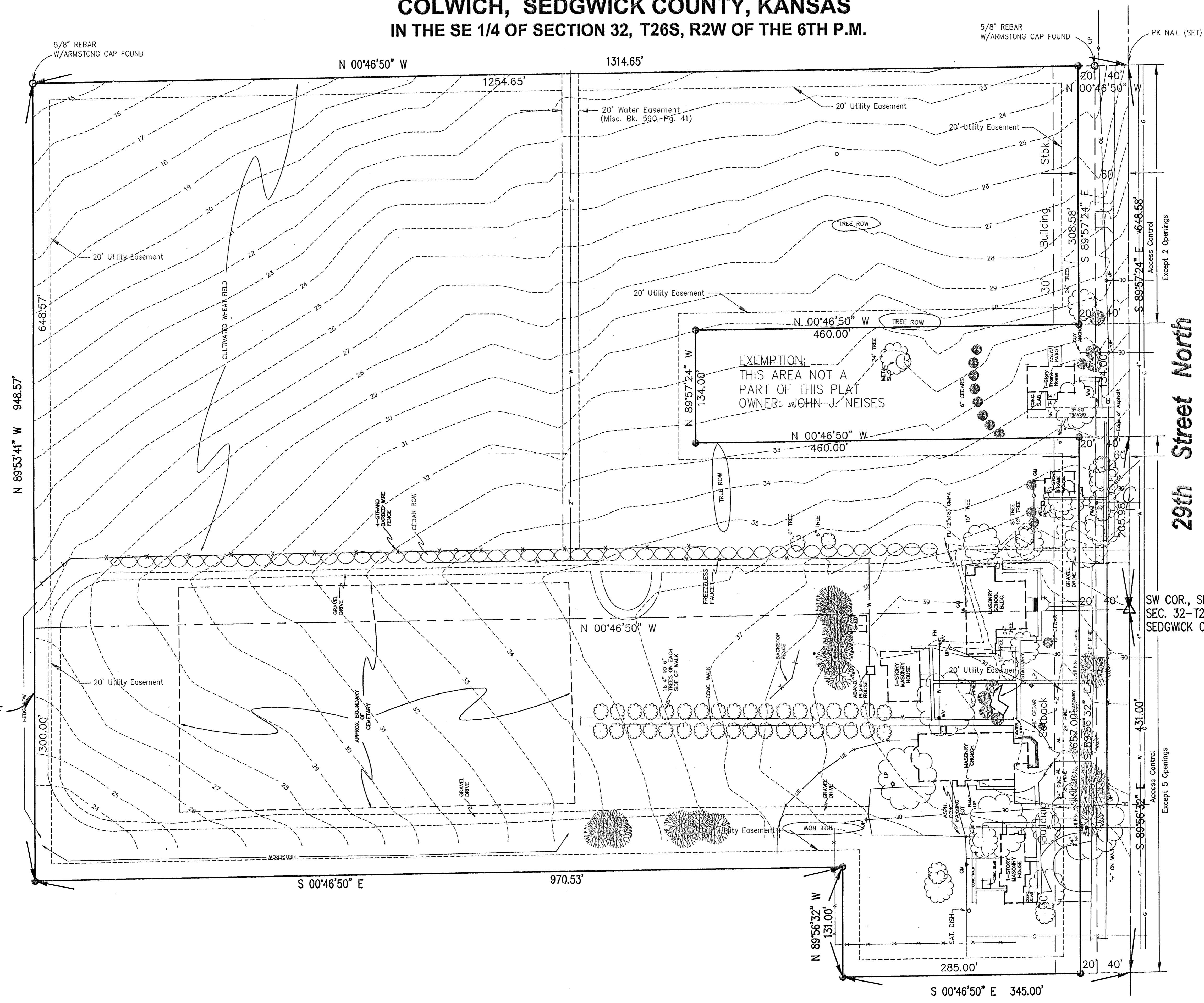
TOTAL PLAT ACREAGE:
 27.55 Acres, Gross

EXISTING ZONING:
 "RR" For Subject Property
 (Rural Residential)

PROPOSED ZONING:
 "RR" For Subject Property
 (Rural Residential)

OWNER/SUBDIVIDER:
 Catholic Diocese of Wichita
 St. Mark Parish
 19230 West 29th St. North
 Colwich, KS 67030
 (316) 796-1604

Closure Computation
 Northing Error=0.020'
 Easting Error=0.024'
 Error of Closure=0.031'
 Accuracy 1:189,334



29th Street North

SW COR., SE 1/4,
 SEC. 32-T26S-R2W
 SEDGWICK CO., KS.

N LINE, S 1/2 OF
 SE 1/4, SEC.
 32-T26S-R2W

EXEMPTION:
 THIS AREA NOT A
 PART OF THIS PLAT
 OWNER: JOHN J. NEISES