

PC 107-7

FINAL PLAT OF "ROBBINS' ACRES" SEDGWICK COUNTY, KANSAS (NE1/4 OF SEC. 19, T28S, R2E OF THE 6TH P.M.)

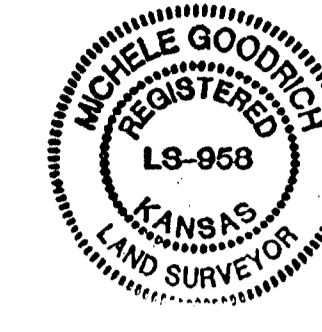
LIBRARY COPY SEDGWICK COUNTY, KANSAS REGISTER OF DEEDS

State of Kansas) ss Sedgwick County)

Terra Tech Land Surveying, Inc., a corporation registered and authorized to practice Land Surveying in the State of Kansas, hereby certifies that it has surveyed and platted "ROBBINS' ACRES", Sedgwick County, Kansas, and the accompanying plat is a true and correct exhibit of such survey described as:

The Southeast Quarter of the Northeast Quarter of Section 19, Township 28 South, Range 2 East of the Sixth Principal Meridian, Sedgwick County, Kansas.

TERRA TECH LAND SURVEYING, INC.



December 16, 1998 Date

Know all men by these presents that C. Mark Robbins and Sheila L. Robbins, owners of the land described in the Surveyor's Certificate, have caused the same to be surveyed and platted into Lots, Streets and Reserve, to be known as "ROBBINS' ACRES", Sedgwick County, Kansas. The Streets are hereby granted to and for the use of the public. The utility easements as shown hereon are hereby granted for the construction and maintenance of all public utilities. All abutters' rights of access to or from Rock Road (79th Street East), over and across the East lines of Lots 1 and 6 are hereby granted to the appropriate governing body. The Floodway Reserve shall be the responsibility of the owners of Lots 1, 2, 3, and 4, "ROBBINS' ACRES" until such time as the governing body exercising jurisdiction elects to assume the responsibility for maintenance and improvement of the drainage. No building shall be constructed on or within said Floodway Reserve; not shall any fill, change of grade, creation of channel or other work be carried on without permission of the appropriate governing body. A minimum pad elevation (lowest opening) of 1361 M.S.L. is hereby established for Lots 1, 2, and 3. A minimum pad elevation (lowest opening) of 1359 M.S.L. is hereby established for Lot 4.

C. Mark Robbins, Sheila L. Robbins

State of Kansas) ss Sedgwick County)

This instrument was acknowledged before me this 8 day of Oct., 1998, by C. Mark Robbins and Sheila L. Robbins.

Saretta L. Culver, Notary Public, My Commission Expires: 10-27-2001



First National Bank, mortgagee on the land being platted herein, does hereby consent to this plat of "ROBBINS' ACRES", Sedgwick County, Kansas.

Kyle M. Russell, Executive Vice-President

Barbara L. Shick, Notary Public, My Commission Expires: 1-30-02



This plat approved and all dedications shown hereon, if any, accepted by the Board of County Commissioners of Sedgwick County, Kansas, this 27th day of October, 1999.

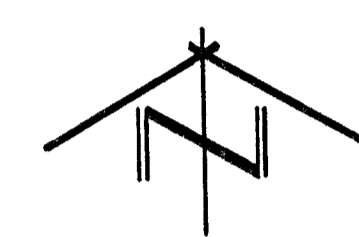
Bill Hancock, Chairman

Ben Sciorino, Commissioner

James Alford, County Clerk

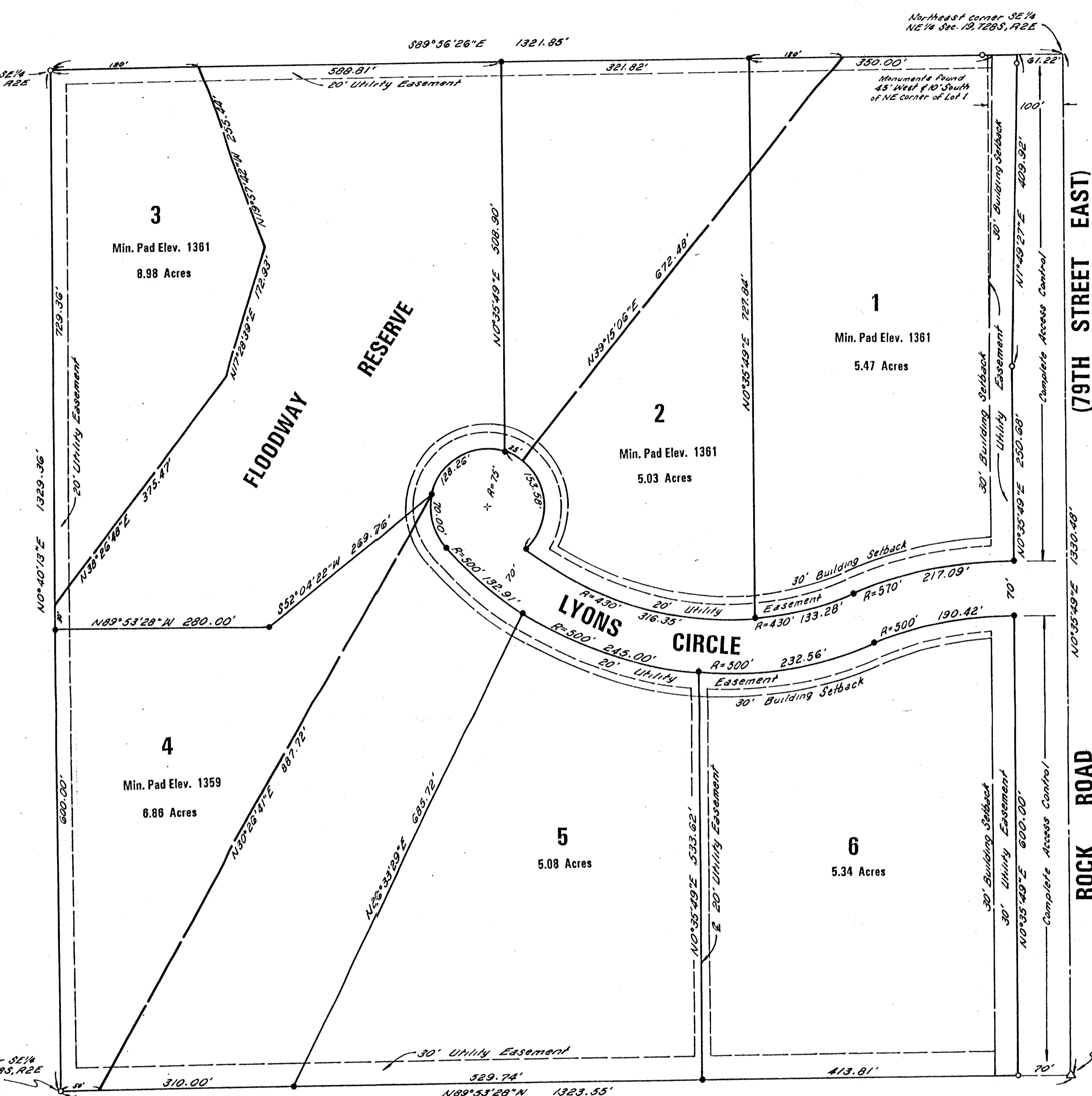
Entered on transfer record this 28th day of October, 1999.

James Alford, County Clerk



SCALE: 1" = 100'
Delta = Section Corner Found
Circle = Property Corner Found
Square = #4 Rebar with I.D. Cap Set
Bearing Basis Assumed

BENCH MARK: Chiseled square on South hubguard of R.C.B.C. 65' West of the Southeast corner of Section 19, Township 28 South, Range 2 East of the 6th P.M. Elevation: 1362.32 MSL



This plat of "ROBBINS' ACRES", Sedgwick County, Kansas, has been submitted to and approved by the Wichita-Sedgwick County Metropolitan Area Planning Commission, Wichita, Kansas.

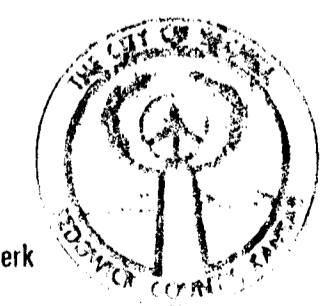
Dated this 15th day of April, 1999.

Wichita Sedgwick County Metropolitan Area Planning Commission. William M. Johnson, Chairman; Marvin S. Krout, Secretary.



This plat approved and all dedications shown hereon are accepted by the City Council of the City of Wichita, Kansas, this 15th day of June, 1999.

Wichita City Council. Bob Knight, Mayor; Pat Burnett, City Clerk.



State of Kansas) ss Sedgwick County)

This is to certify that this instrument was filed for record in the Register of Deeds Office, at 12:40 o'clock P.M., on the 28th day of October, 1999.

Bill Meek, Register of Deeds; Linda Kizire, Deputy.



Reviewed in accordance with K.S.A. 58-2005 on this 28th day of September, 1999. Tricia L. Robello, Deputy County Surveyor.

1839804

TERRA TECH LAND SURVEYING INC.

239 North Ohio, Wichita, Kansas 67214-3933

PC 107-7