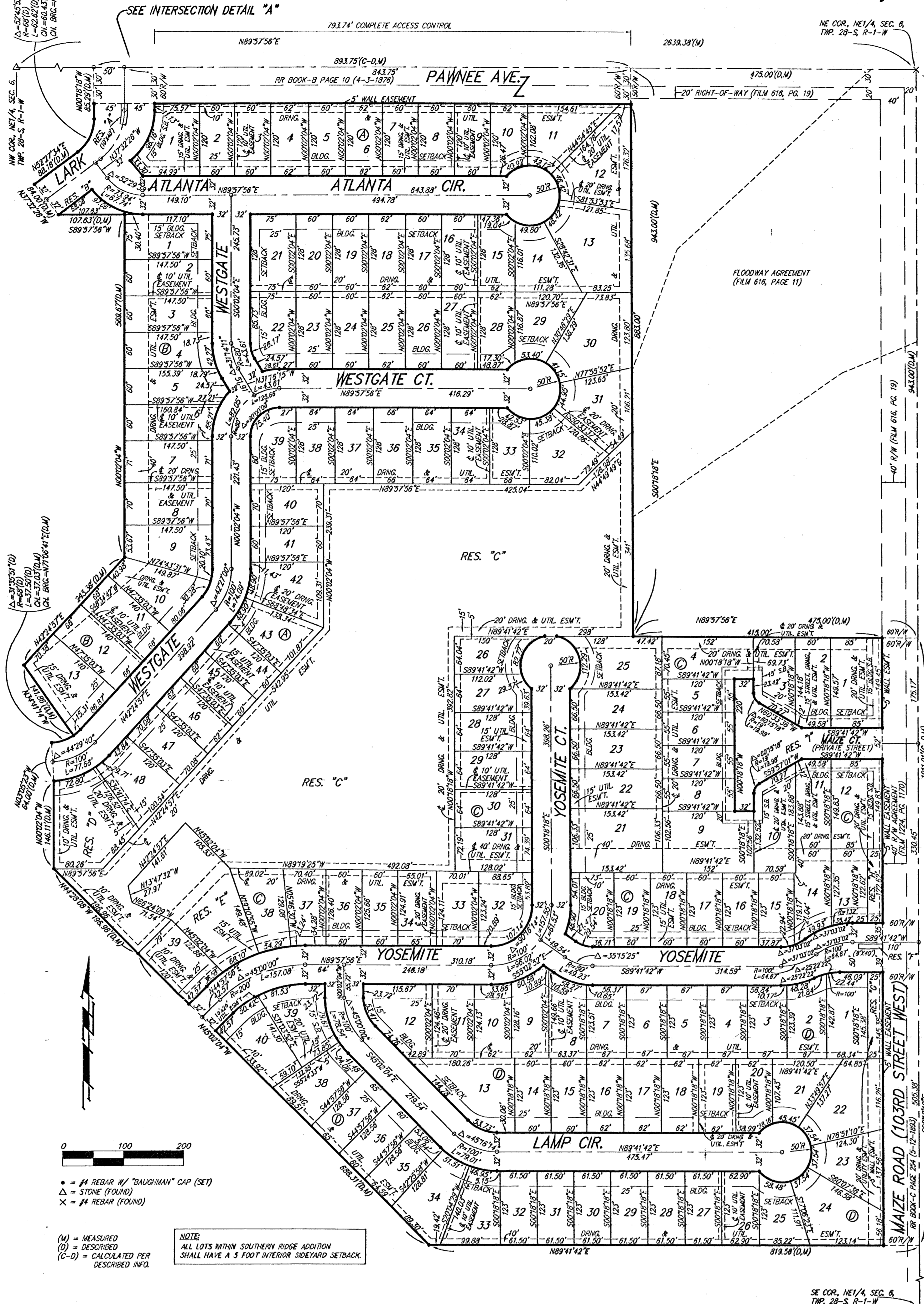


SOUTHERN RIDGE ADDITION

WICHITA, SEDGWICK COUNTY, KANSAS

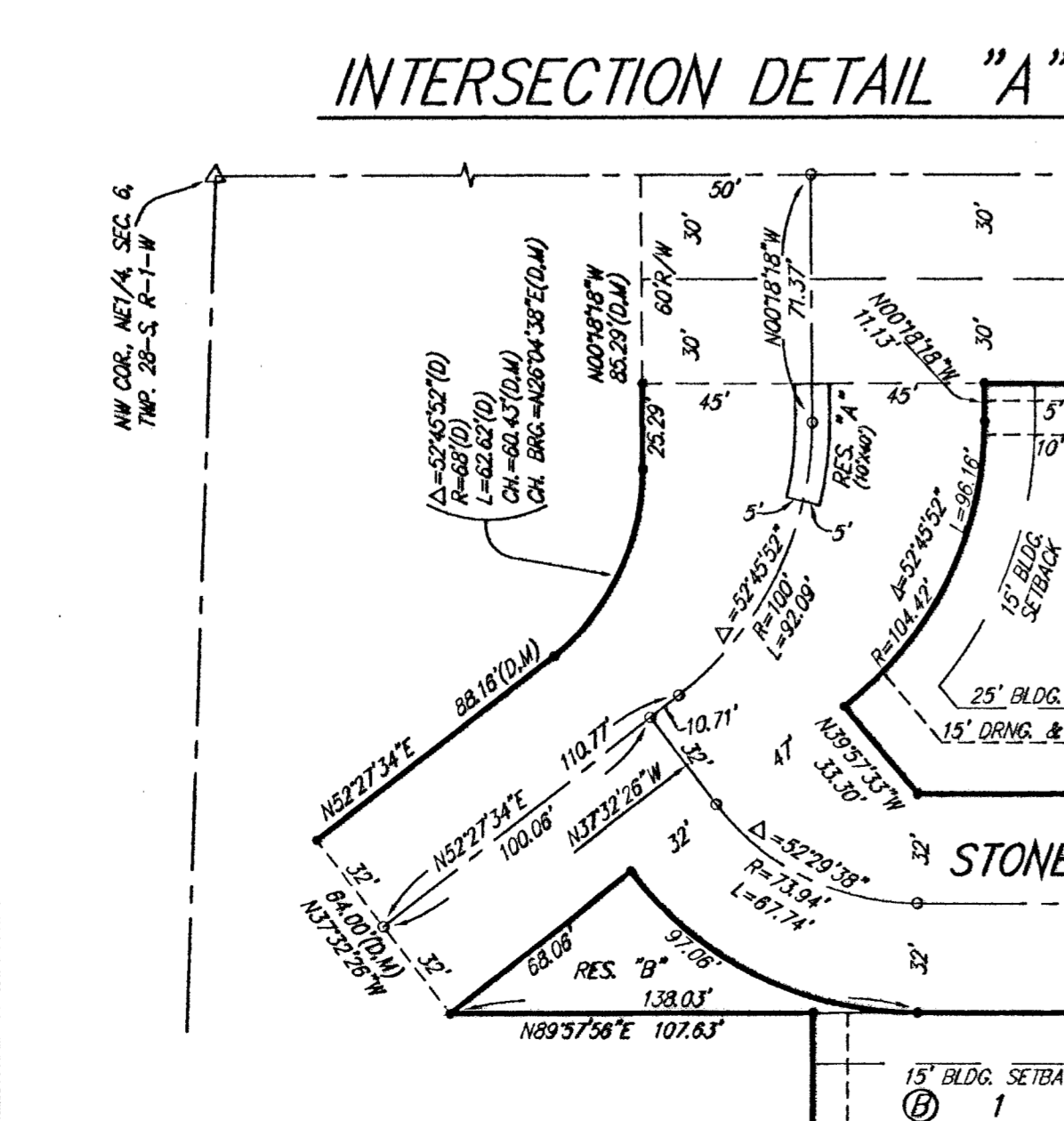


MINIMUM BUILDING PAD ELEVATIONS FOR LOWEST OPENINGS TO THE STRUCTURES

LOT	BLOCK	ELEVATION CITY DATUM
31-48	A	140.0
28-29	C	140.0

BENCHMARK:
City of Wichita Benchmark Disc - SW Corner of the Intersection of Pawnee & 10th Rd
44' South of centerline
48.8' West of centerline
12' East of face
65' SW of Disc corner iron
Elev = 135.12 City Datum
132.52 NGVD29

NOTE:
A master grading plan for drainage has been developed for this subdivision and is on file with the City of Wichita, Kansas. All drainage easements, right-of-ways, or reserves shall remain as established grades or as modified with the approval of the City Engineer of the City of Wichita, Kansas. No obstructions which impede the flow of this drainage system be allowed.



State of Kansas) SS We, Baughman Company, P.A., Surveyors in
Sedgwick County) aforesaid county and state do hereby certify that we have surveyed and
platted "SOUTHERN RIDGE ADDITION", Wichita, Sedgwick County, Kansas and
that the accompanying plat is a true and correct exhibit of the property
surveyed, described as that part of the NE 1/4 of Sec. 6, Twp. 28-S, R-1-W,
Sedgwick County, Kansas described as follows:
Beginning at the NE corner of said NE 1/4; thence S00°18'18"E along the
east line of said NE 1/4, 1954.01 feet; thence S89°41'42"W, 819.56 feet;
thence N45°02'04"W, 686.31 feet; thence N44°28'08"W, 196.96 feet; thence
N00°02'04"W, 146.11 feet; thence N03°05'23"W, 64.00 feet to a point on a
curve to the left; thence northeasterly along said curve, having a central
angle of 31°35'51" and a radius of 68.00 feet, and arc distance of
37.50 feet, (having a chord length of 37.03 feet bearing N71°06'41"E);
thence N34°41'14"W, 141.86 feet; thence N42°24'57"E, 243.36 feet; thence
N00°02'04"W, 569.67 feet; thence S89°57'56"W, 107.63 feet; thence
N37°32'26"W, 64.00 feet; thence N52°27'34"E, 88.16 feet to the P.C. of a
curve to the left; thence northeasterly and northerly along said curve,
having a central angle of 52°45'52" and a radius of 68.00 feet, an arc
distance of 62.62 feet, (having a chord length of 60.43 feet bearing
N26°04'38"E), to the P.T. of said curve; thence N00°18'18"W, 85.29 feet to
a point on the north line of said NE 1/4; thence N89°57'56"E along the
north line of said NE 1/4, 1368.75 feet to the point of beginning, EXCEPT
therefrom the following described tract: Beginning at the NE corner of
said NE 1/4; thence southerly along the east line of said NE 1/4, on an
assumed bearing of S00°00'00"E, (S00°18'18"E converted bearing), a
distance of 943.00 feet; thence N89°43'49"W, (S89°57'56"W calculated
bearing), 475.00 feet; thence N00°00'00"E, (N00°18'18"W converted
bearing), 943.00 feet; thence S89°43'49"E, (N89°57'56"E calculated
bearing), 475.00 feet to the point of beginning, all being subject to road
rights-of-way of record.

Existing public easements and dedications
being vacated by virtue of K.S.A. 12-512(b).

Baughman Company, P.A.

Michael G. Conroy, Surveyor

Know all men by these presents that we, the undersigned, have caused the land in the surveyors certificate to be platted into Lots, Blocks, Streets, and Reserves to be known as "SOUTHERN RIDGE ADDITION", Wichita, Sedgwick County, Kansas. The utility easements are hereby granted as indicated for the construction and maintenance of all public utilities. The drainage and utility easements are hereby granted as indicated for drainage purposes and for the construction and maintenance of all public utilities. The drainage easements are hereby granted as indicated for drainage purposes. The street, drainage, and utility easements are hereby granted as indicated for street related purposes, for drainage purposes, and for the construction and maintenance of all public utilities. The wall easements are hereby granted as indicated for the construction and maintenance of a private screening wall and utility main lines and service lines shall be allowed to cross these easements. The streets are hereby dedicated to and for the use of the public. Access controls shall be as depicted on the face of the plat and are hereby granted to the City of Wichita, Kansas. Reserves "A", "B", "C", "D", "E", "F", "G", "H", "I", "J", "K", "L", "M", "N", "O", "P", "Q", "R", "S", "T", "U", "V", "W", "X", "Y", "Z", "AA", "AB", "AC", "AD", "AE", "AF", "AG", "AH", "AI", "AJ", "AK", "AL", "AM", "AN", "AO", "AP", "AQ", "AR", "AS", "AT", "AU", "AV", "AW", "AX", "AY", "AZ", "BA", "BB", "BC", "BD", "BE", "BF", "BG", "BH", "BI", "BJ", "BK", "BL", "BM", "BN", "BO", "BP", "BQ", "BR", "BS", "BT", "BU", "BV", "BW", "BX", "BY", "BZ", "CA", "CB", "CC", "CD", "CE", "CF", "CG", "CH", "CI", "CJ", "CK", "CL", "CM", "CN", "CO", "CP", "CQ", "CR", "CS", "CT", "CU", "CV", "CW", "CX", "CY", "CZ", "DA", "DB", "DC", "DD", "DE", "DF", "DG", "DH", "DI", "DJ", "DK", "DL", "DM", "DN", "DO", "DP", "DQ", "DR", "DS", "DT", "DU", "DV", "DW", "DX", "DY", "DZ", "EA", "EB", "EC", "ED", "EE", "EF", "EG", "EH", "EI", "EJ", "EK", "EL", "EM", "EN", "EO", "EP", "EQ", "ER", "ES", "ET", "EU", "EV", "EW", "EX", "EY", "EZ", "FA", "FB", "FC", "FD", "FE", "FF", "FG", "FH", "FI", "FJ", "FK", "FL", "FM", "FN", "FO", "FP", "FQ", "FR", "FS", "FT", "FU", "FV", "FW", "FX", "FY", "FZ", "GA", "GB", "GC", "GD", "GE", "GF", "GG", "GH", "GI", "GJ", "GK", "GL", "GM", "GN", "GO", "GP", "GQ", "GR", "GS", "GT", "GU", "GV", "GW", "GX", "GY", "GZ", "HA", "HB", "HC", "HD", "HE", "HF", "HG", "HH", "HI", "HJ", "HK", "HL", "HM", "HN", "HO", "HP", "HQ", "HR", "HS", "HT", "HU", "HV", "HW", "HX", "HY", "HZ", "IA", "IB", "IC", "ID", "IE", "IF", "IG", "IH", "II", "IJ", "IK", "IL", "IM", "IN", "IO", "IP", "IQ", "IR", "IS", "IT", "IU", "IV", "IW", "IX", "IY", "IZ", "JA", "JB", "JC", "JD", "JE", "JF", "JG", "JH", "JI", "JJ", "JK", "JL", "JM", "JN", "JO", "JP", "JQ", "JR", "JS", "JT", "JU", "JV", "JW", "JX", "JY", "JZ", "KA", "KB", "KC", "KD", "KE", "KF", "KG", "KH", "KI", "KJ", "KK", "KL", "KM", "KN", "KO", "KP", "KQ", "KR", "KS", "KT", "KU", "KV", "KW", "KX", "KY", "KZ", "LA", "LB", "LC", "LD", "LE", "LF", "LG", "LH", "LI", "LJ", "LK", "LL", "LM", "LN", "LO", "LP", "LQ", "LR", "LS", "LT", "LU", "LV", "LW", "LX", "LY", "LZ", "MA", "MB", "MC", "MD", "ME", "MF", "MG", "MH", "MI", "MJ", "MK", "ML", "MM", "MN", "MO", "MP", "MQ", "MR", "MS", "MT", "MU", "MV", "MW", "MX", "MY", "MZ", "NA", "NB", "NC", "ND", "NE", "NF", "NG", "NH", "NI", "NJ", "NK", "NL", "NM", "NN", "NO", "NP", "NQ", "NR", "NS", "NT", "NU", "NV", "NW", "NX", "NY", "NZ", "OA", "OB", "OC", "OD", "OE", "OF", "OG", "OH", "OI", "OJ", "OK", "OL", "OM", "ON", "OO", "OP", "OQ", "OR", "OS", "OT", "OU", "OV", "OW", "OX", "OY", "OZ", "PA", "PB", "PC", "PD", "PE", "PF", "PG", "PH", "PI", "PJ", "PK", "PL", "PM", "PN", "PO", "PP", "PQ", "PR", "PS", "PT", "PU", "PV", "PW", "PX", "PY", "PZ", "QA", "QB", "QC", "QD", "QE", "QF", "QG", "QH", "QI", "QJ", "QK", "QL", "QM", "QN", "QO", "QP", "QQ", "QR", "QS", "QT", "QU", "QV", "QW", "QX", "QY", "QZ", "RA", "RB", "RC", "RD", "RE", "RF", "RG", "RH", "RI", "RJ", "RK", "RL", "RM", "RN", "RO", "RP", "RQ", "RR", "RS", "RT", "RU", "RV", "RW", "RX", "RY", "RZ", "SA", "SB", "SC", "SD", "SE", "SF", "SG", "SH", "SI", "SJ", "SK", "SL", "SM", "SN", "SO", "SP", "SQ", "SR", "SS", "ST", "SU", "SV", "SW", "SX", "SY", "SZ", "TA", "TB", "TC", "TD", "TE", "TF", "TG", "TH", "TI", "TJ", "TK", "TL", "TM", "TN", "TO", "TP", "TQ", "TR", "TS", "TT", "TU", "TV", "TW", "TX", "TY", "TZ", "UA", "UB", "UC", "UD", "UE", "UF", "UG", "UH", "UI", "UJ", "UK", "UL", "UM", "UN", "UO", "UP", "UQ", "UR", "US", "UT", "UU", "UV", "UW", "UX", "UY", "UZ", "VA", "VB", "VC", "VD", "VE", "VF", "VG", "VH", "VI", "VJ", "VK", "VL", "VM", "VN", "VO", "VP", "VQ", "VR", "VS", "VT", "VU", "VV", "VW", "VX", "VY", "VZ", "WA", "WB", "WC", "WD", "WE", "WF", "WG", "WH", "WI", "WJ", "WK", "WL", "WM", "WN", "WO", "WP", "WQ", "WR", "WS", "WT", "WU", "WV", "WW", "WX", "WY", "WZ", "XA", "XB", "XC", "XD", "XE", "XF", "XG", "XH", "XI", "XJ", "XK", "XL", "XM", "XN", "XO", "XP", "XQ", "XR", "XS", "XT", "XU", "XV", "XW", "XX", "XY", "XZ", "YA", "YB", "YC", "YD", "YE", "YF", "YG", "YH", "YI", "YJ", "YK", "YL", "YM", "YN", "YO", "YP", "YQ", "YR", "YS", "YT", "YU", "YV", "YW", "YX", "YZ", "ZA", "ZB", "ZC", "ZD", "ZE", "ZF", "ZG", "ZH", "ZI", "ZJ", "ZK", "ZL", "ZM", "ZN", "ZO", "ZP", "ZQ", "ZR", "ZS", "ZT", "ZU", "ZV", "ZW", "ZX", "ZY", "ZZ".

Maize Road, L.L.C.

Jay W. Russell, Managing Member

State of Kansas) SS The foregoing instrument acknowledged before
Sedgwick County) me, this 5th day of NOVEMBER, 2002, by Jay W. Russell, Managing
Member of Maize Road, L.L.C., on behalf of the limited liability company.

Susan M. Monette, Notary Public

We the undersigned holders of a mortgage on the
above described property, do hereby consent to this plat of "SOUTHERN
RIDGE ADDITION", Wichita, Sedgwick County, Kansas.

Stillwater National Bank & Trust Company

John M. Frazer, President

State of Kansas) SS The foregoing instrument acknowledged be-
Sedgwick County) fore me, this 6th day of NOVEMBER, 2002, by JOHN M. FRAZER,
PRESIDENT of Stillwater National Bank & Trust Company, on
behalf of the bank.

Susan M. Monette, Notary Public

This plat of "SOUTHERN RIDGE ADDITION",
Wichita, Sedgwick County, Kansas has been submitted to and approved by
the Wichita-Sedgwick County Metropolitan Area Planning Commission,
Wichita, Kansas.
Dated this 24th day of October, 2002.
Wichita-Sedgwick County Metropolitan Area Planning Commission

Bernard H. Houben, Chair

Dale Miller, Secretary

This plat approved and all dedications
shown hereon accepted by the City Council of the City of Wichita,
Kansas, this _____ day of _____, 2002.

At the direction of the City Council

Chris Cherches, City Manager

Pat Schauer, City Clerk

on this 19th day of November, 2002.

Patricia A. Robello, L.S. #1246
Deputy County Surveyor
Sedgwick County, Kansas

Entered on transfer record this _____ day
of _____, 2002.
Don Brace, County Clerk

State of Kansas) SS This is to certify that this plat has been
Sedgwick County) filed for record in the office of the Register of Deeds, this _____ day
of _____, 2002 at _____ o'clock _____ M. and is duly recorded.

Bill Meek, Register of Deeds
Linda Kizzire, Deputy

BAUGHMAN COMPANY P.A.
ENGINEERING, SURVEYING, & PLANNING
318-283-1217 • 318-283-1218 • WICHITA, KANSAS 67211
P:\PLAT\2002\SRIDGE\DWG\2002SRIDGE.DWG