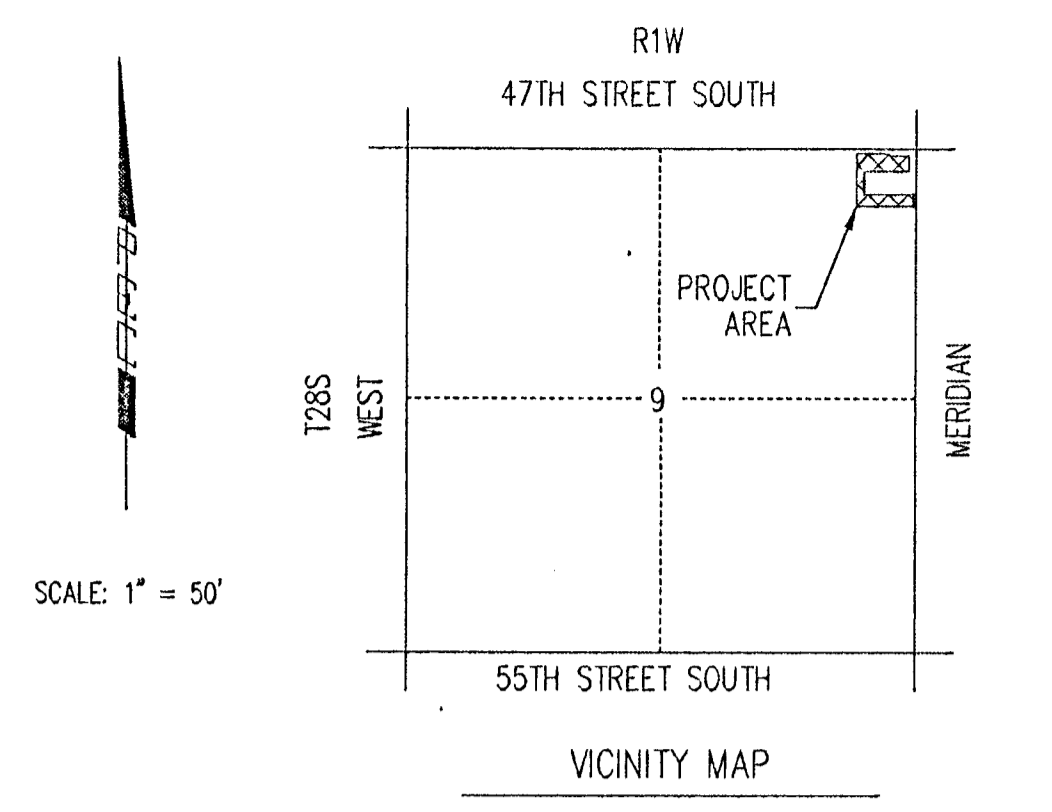


DRAINAGE PLAN FOR SOUTH LAKES COMMERCIAL ADDITION TO WICHITA, SEDGWICK COUNTY, KANSAS

• = 3/4" IRON PIPE W/PEC CAP UNLESS OTHERWISE NOTED
B.S.L. = BUILDING SETBACK LINE

B.M. - CITY OF WICHITA BENCHMARK . 44" NORTH AND 30" EAST OF THE
OF MERIDIAN AND 47TH ST. SOUTH ELEV. = 91.78 (City Datum)
ELEV. = 1279.18 N.G.V.D.



STATE OF KANSAS)
COUNTY OF SEDGWICK)

WE, PROFESSIONAL ENGINEERING CONSULTANTS, P.A. ENGINEERS AND SURVEYORS IN AFORESAID STATE AND COUNTY, DO HEREBY CERTIFY THAT OF THIS DAY OF _____, 2001, WE HAVE SURVEYED AND PLATTED SOUTH LAKES COMMERCIAL ADDITION, TO WICHITA, SEDGWICK COUNTY, KANSAS, INTO LOTS AND A BLOCK, THE SAME BEING DESCRIBED AS FOLLOWS:

THE NORTH 600 FEET OF THE EAST 620 FEET OF THE EAST HALF OF THE NORTHEAST QUARTER OF SECTION 24, TOWNSHIP 28 SOUTH, RANGE 1 WEST OF THE SIXTH PRINCIPAL MERIDIAN, SEDGWICK COUNTY, KANSAS, EXCEPT THAT PART OF THE NORTHEAST QUARTER OF SECTION 24, TOWNSHIP 28 SOUTH, RANGE 1 WEST OF THE SIXTH PRINCIPAL MERIDIAN, SEDGWICK COUNTY, KANSAS, DESCRIBED AS FOLLOWS: COMMENCING AT THE NORTHEAST CORNER OF SAID NORTHEAST QUARTER; THENCE SOUTH ALONG THE EAST LINE OF SAID NORTHEAST QUARTER, 230 FEET TO A POINT OF BEGINNING; THENCE SOUTH 250.68 FEET; THENCE WEST PARALLEL WITH THE NORTH LINE OF SAID NORTHEAST QUARTER, 541.14 FEET; THENCE NORTH 250.68 FEET; THENCE EAST 541.14 FEET TO THE POINT OF BEGINNING.

JAMES R. BECKETT, R.L.S. NO. 832
PROFESSIONAL ENGINEERING CONSULTANTS, P.A.

KNOW ALL MEN BY THESE PRESENTS THAT WE, THE UNDERSIGNED PROPERTY OWNERS OF THE LAND AS ABOVE SET FORTH IN THE SURVEYOR'S CERTIFICATE, HAVE CAUSED THE LAND TO BE SURVEYED AND PLATTED INTO LOTS AND A BLOCK, THE SAME TO BE KNOWN AS SOUTH LAKES COMMERCIAL ADDITION TO WICHITA, SEDGWICK COUNTY, KANSAS.

THE STREETS ARE HEREBY DEDICATED TO AND FOR THE USE OF THE PUBLIC.

EASEMENTS FOR THE CONSTRUCTION AND MAINTENANCE OF PUBLIC UTILITIES ARE HEREBY GRANTED.

ALL ABUTTERS RIGHT OF ACCESS TO AND FROM 47TH STREET SOUTH AND MERIDIAN OVER THE NORTH AND EAST LINE OF BLOCK 1 IS HEREBY GRANTED TO THE CITY OF WICHITA, PROVIDED HOWEVER THAT BLOCK 1 SHALL HAVE ACCESS TO 47TH STREET SOUTH AT TWO (2) LOCATIONS AND MERIDIAN AT TWO (2) LOCATIONS AS SHOWN.

A DRAINAGE PLAN HAS BEEN APPROVED FOR THIS PLAT. ALL DRAINAGE EASEMENTS AND RIGHTS-OF-WAY SHALL REMAIN AT ESTABLISHED GRADES AND UNOBSERVED TO ALLOW FOR THE CONFORMANCE OF STORM WATER, UNLESS MODIFIED WITH THE APPROVAL OF THE CITY ENGINEER.

OWNERS:
JEFF W. BANNON AND MELINDA BANNON

JEFF W. BANNON

MELINDA BANNON

RUNOFF DATA FOR 5 YEAR RETURN PERIOD

Drainage Basin #	Area (Acres)	C	Tc	i 5	Q 5 (CFS)
1	0.406	0.69	15	5.21	1.46
2	0.401	0.69	15	5.21	1.44
3	0.323	0.69	15	5.21	1.16
4	0.331	0.69	15	5.21	1.19
5	0.558	0.69	15	5.21	2.01
6	0.331	0.69	15	5.21	1.19
7	0.227	0.69	15	5.21	0.82
8	0.336	0.69	15	5.21	1.21
9	1.452	0.69	15	5.21	5.21

RUNOFF DATA FOR 100 YEAR RETURN PERIOD

Drainage Basin #	Area (Acres)	C	Tc	i 100	Q 100 (CFS)
1	0.406	0.80	15	8.98	2.92
2	0.401	0.80	15	8.98	2.88
3	0.323	0.80	15	8.98	2.32
4	0.331	0.80	15	8.98	2.38
5	0.558	0.80	15	8.98	4.01
6	0.331	0.80	15	8.98	2.38
7	0.227	0.80	15	8.98	1.63
8	0.336	0.80	15	8.98	2.41
9	1.452	0.80	15	8.98	10.43

STATE OF KANSAS)
COUNTY OF SEDGWICK)

THIS INSTRUMENT WAS ACKNOWLEDGED BEFORE ME ON THIS _____ DAY OF _____, 2001, BY JEFF W. BANNON AND MELINDA BANNON, HUSBAND AND WIFE.

_____, NOTARY PUBLIC

MY APPOINTMENT EXPIRES: _____

THIS PLAT OF SOUTH LAKES COMMERCIAL ADDITION HAS BEEN SUBMITTED TO AND APPROVED BY THE WICHITA-SEDGWICK COUNTY METROPOLITAN AREA PLANNING COMMISSION, WICHITA, KANSAS.

DATED THIS _____ DAY OF _____, 2001.

WICHITA-SEDGWICK COUNTY METROPOLITAN AREA PLANNING COMMISSION

_____, CHAIRMAN

_____, SECRETARY

REVIEWED IN ACCORDANCE WITH K.S.A. 58-2005 ON THIS _____ DAY OF _____, 2001.

TRICIA L. ROBELLO, LS #1246
DEPUTY COUNTY SURVEYOR
SEDGWICK COUNTY KANSAS

THIS PLAT IS APPROVED AND ALL DEDICATIONS SHOWN HEREON, IF ANY ARE ACCEPTED BY THE CITY COUNCIL OF THE CITY OF WICHITA, KANSAS, THIS _____ DAY OF _____, 2001.

AT THE DIRECTION OF THE CITY COUNCIL

_____, CITY MANAGER

CHRIS CHERCHES

PAT BURNETT

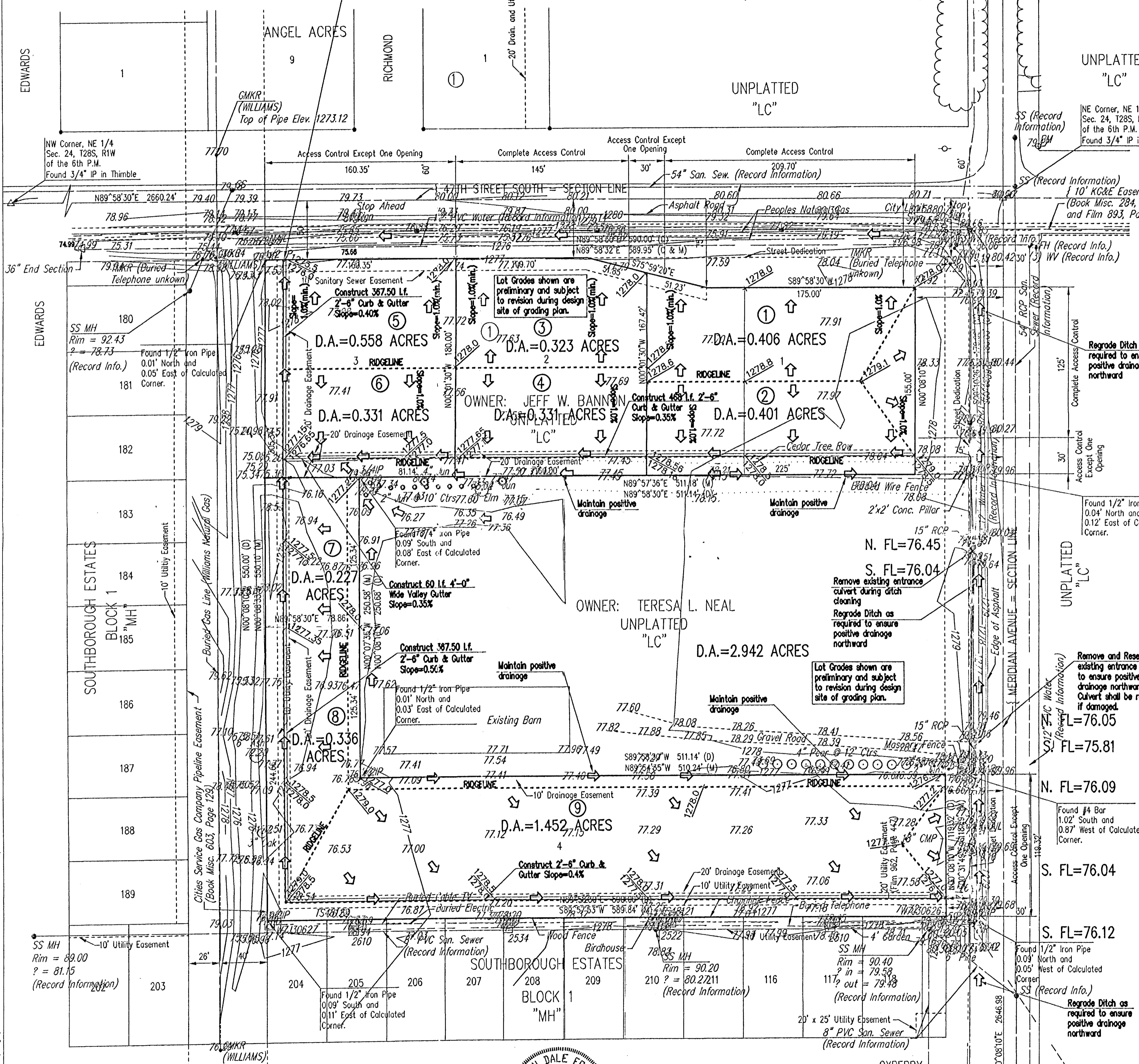
ENTERED ON TRANSFER RECORD THIS _____ DAY OF _____, 2001.

_____, COUNTY CLERK

THIS IS TO CERTIFY THAT THIS INSTRUMENT WAS FILED FOR RECORD IN THE REGISTER OF DEEDS OFFICE AT _____, ON THE _____ DAY OF _____, 2001.

_____, REGISTER OF DEEDS

LINDA KIZZIRE



DRAINAGE PLAN PREPARED BY:
CERTIFIED ENGINEERING DESIGN, P.A.
810 WEST DOUGLAS, SUITE C
WICHITA, KANSAS 67203
PH: (316) 262-8808
FAX: (316) 262-1889

OXBERRY
SE Corner, NE 1/4
Sec. 24, T28S, R1W
of 6th P.M.
Found 1/2" IP

DSNR: JTS OPER. JTS SCALE: 1"=50.00
0:2001\01541\Bannon.dwg\PRELIM PLAT 01-21-2002 04:08:12 pm