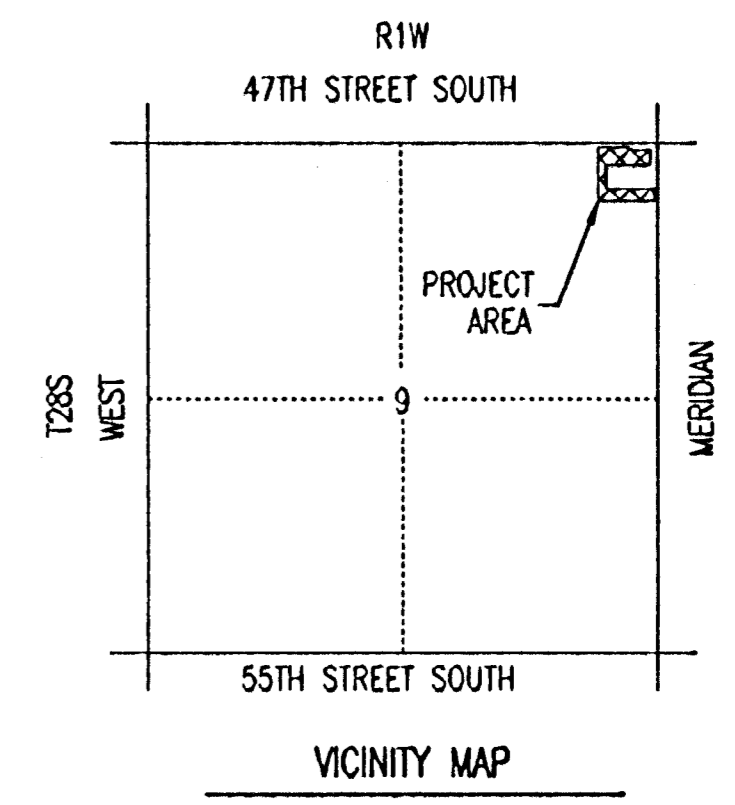
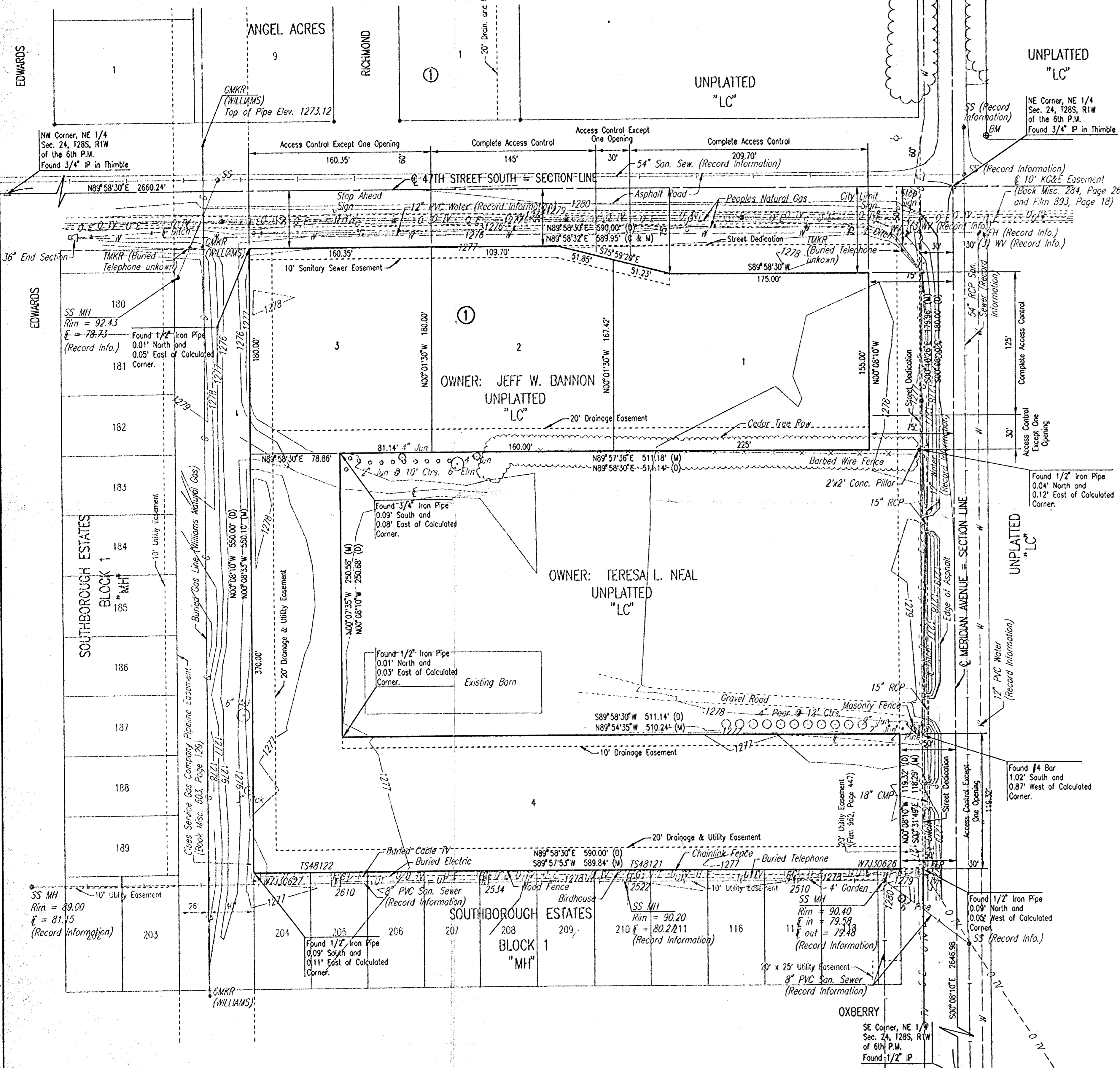


PRELIMINARY PLAT  
**SOUTH LAKES COMMERCIAL ADDITION**  
 TO WICHITA, SEDGWICK COUNTY, KANSAS



SCALE: 1" = 50'

• = 3/4" IRON PIPE W/PEC CAP UNLESS OTHERWISE NOTED  
 B.S.L. = BUILDING SETBACK LINE

B.M. - CITY OF WICHITA BENCHMARK . 44' NORTH AND 30' EAST OF THE  
 & OF MERIDIAN AND 47TH ST. SOUTH  
 ELEV. = 91.78 (City Datum)  
 ELEV. = 1279.18 N.G.V.D.

STATE OF KANSAS } SS  
 COUNTY OF SEDGWICK }

WE, PROFESSIONAL ENGINEERING CONSULTANTS, P.A., ENGINEERS AND SURVEYORS IN AFORESAID STATE AND COUNTY, DO HEREBY CERTIFY THAT OF THIS DAY OF \_\_\_\_\_, 2002, WE HAVE SURVEYED AND PLATTED SOUTH LAKES COMMERCIAL ADDITION, TO WICHITA, SEDGWICK COUNTY, KANSAS, INTO LOTS AND A BLOCK, THE SAME BEING DESCRIBED AS FOLLOWS:

THE NORTH 600 FEET OF THE EAST 620 FEET OF THE EAST HALF OF THE NORTHEAST QUARTER OF SECTION 24, TOWNSHIP 28 SOUTH, RANGE 1 WEST OF THE SIXTH PRINCIPAL MERIDIAN, SEDGWICK COUNTY, KANSAS, EXCEPT THAT PART OF THE NORTHEAST QUARTER OF SECTION 24, TOWNSHIP 28 SOUTH, RANGE 1 WEST OF THE SIXTH PRINCIPAL MERIDIAN, SEDGWICK COUNTY, KANSAS, DESCRIBED AS FOLLOWS: COMMENCING AT THE NORTHEAST CORNER OF SAID NORTHEAST QUARTER; THENCE SOUTH ALONG THE EAST LINE OF SAID NORTHEAST QUARTER, 230 FEET TO A POINT OF BEGINNING; THENCE SOUTH 250.68 FEET; THENCE WEST PARALLEL WITH THE NORTH LINE OF SAID NORTHEAST QUARTER, 541.14 FEET; THENCE NORTH 250.68 FEET; THENCE EAST 541.14 FEET TO THE POINT OF BEGINNING.

THIS INSTRUMENT WAS ACKNOWLEDGED BEFORE ME ON THIS \_\_\_\_\_ DAY OF \_\_\_\_\_, 2002, BY JEFF W. BANNON AND MELINDA BANNON, HUSBAND AND WIFE.

\_\_\_\_\_, NOTARY PUBLIC  
 MARY A. FARRAR  
 MY APPOINTMENT EXPIRES: \_\_\_\_\_

THIS PLAT OF SOUTH LAKES COMMERCIAL ADDITION HAS BEEN SUBMITTED TO AND APPROVED BY THE WICHITA-SEDGWICK COUNTY METROPOLITAN AREA PLANNING COMMISSION, WICHITA, KANSAS.

DATED THIS \_\_\_\_\_ DAY OF \_\_\_\_\_, 2002.

WICHITA-SEDGWICK COUNTY METROPOLITAN AREA PLANNING COMMISSION  
 \_\_\_\_\_, CHAIRMAN  
 JERRY MICHAELIS  
 \_\_\_\_\_, SECRETARY  
 MARVIN S. KROUT

JAMES R. BECKETT, R.L.S. NO. 832  
 PROFESSIONAL ENGINEERING CONSULTANTS, P.A.

KNOW ALL MEN BY THESE PRESENTS THAT WE, THE UNDERSIGNED PROPERTY OWNERS OF THE LAND AS ABOVE SET FORTH IN THE SURVEYOR'S CERTIFICATE, HAVE CAUSED THE LAND TO BE SURVEYED AND PLATTED INTO LOTS AND A BLOCK, THE SAME TO BE KNOWN AS SOUTH LAKES COMMERCIAL ADDITION TO WICHITA, SEDGWICK COUNTY, KANSAS.

THE STREETS ARE HEREBY DEDICATED TO AND FOR THE USE OF THE PUBLIC. EASEMENTS FOR THE CONSTRUCTION AND MAINTENANCE OF PUBLIC UTILITIES ARE HEREBY GRANTED.

ALL ABUTTERS RIGHT OF ACCESS TO AND FROM 47TH STREET SOUTH AND MERIDIAN OVER THE NORTH AND EAST LINE OF BLOCK 1 IS HEREBY GRANTED TO THE CITY OF WICHITA, PROVIDED HOWEVER THAT BLOCK 1 SHALL HAVE ACCESS TO 47TH STREET SOUTH AT TWO (2) LOCATIONS AND MERIDIAN AT TWO (2) LOCATIONS AS SHOWN.

A DRAINAGE PLAN HAS BEEN APPROVED FOR THIS PLAT. ALL DRAINAGE EASEMENTS AND RIGHTS-OF-WAY SHALL REMAIN AT ESTABLISHED GRADES AND UNOBSTRUCTED TO ALLOW FOR THE CONVEYANCE OF STORM WATER, UNLESS MODIFIED WITH THE APPROVAL OF THE CITY ENGINEER.

OWNERS:  
 JEFF W. BANNON AND MELINDA BANNON

JEFF W. BANNON  
 MELINDA BANNON

REVIEWED IN ACCORDANCE WITH K.S.A. 58-2005 ON THIS \_\_\_\_\_ DAY OF \_\_\_\_\_, 2002.

TRICIA L. ROBELLO, LS #1246  
 DEPUTY COUNTY SURVEYOR  
 SEDGWICK COUNTY KANSAS

THIS PLAT IS APPROVED AND ALL DEDICATIONS SHOWN HEREON, IF ANY ARE ACCEPTED BY THE CITY COUNCIL OF THE CITY OF WICHITA, KANSAS, THIS \_\_\_\_\_ DAY OF \_\_\_\_\_, 2002.

AT THE DIRECTION OF THE CITY COUNCIL

\_\_\_\_\_, CITY MANAGER  
 CHRIS CHERCHES  
 \_\_\_\_\_, CITY CLERK  
 PAT BURNETT

ENTERED ON TRANSFER RECORD THIS \_\_\_\_\_ DAY OF \_\_\_\_\_, 2002.

\_\_\_\_\_, COUNTY CLERK  
 DON BRACE

THIS IS TO CERTIFY THAT THIS INSTRUMENT WAS FILED FOR RECORD IN THE REGISTER OF DEEDS OFFICE AT \_\_\_\_\_ M., ON THE \_\_\_\_\_ DAY OF \_\_\_\_\_, 2002.

\_\_\_\_\_, REGISTER OF DEEDS  
 BILL WEEK  
 \_\_\_\_\_, DEPUTY  
 LINDA KIZZIRE

DSGN: JIS OPER: JIS SCALE: 1"=50.00  
 03/20/01 01:54:11 \Bannon.gwg\PRELIM PLAT 06-27-2002 10:22:43 am