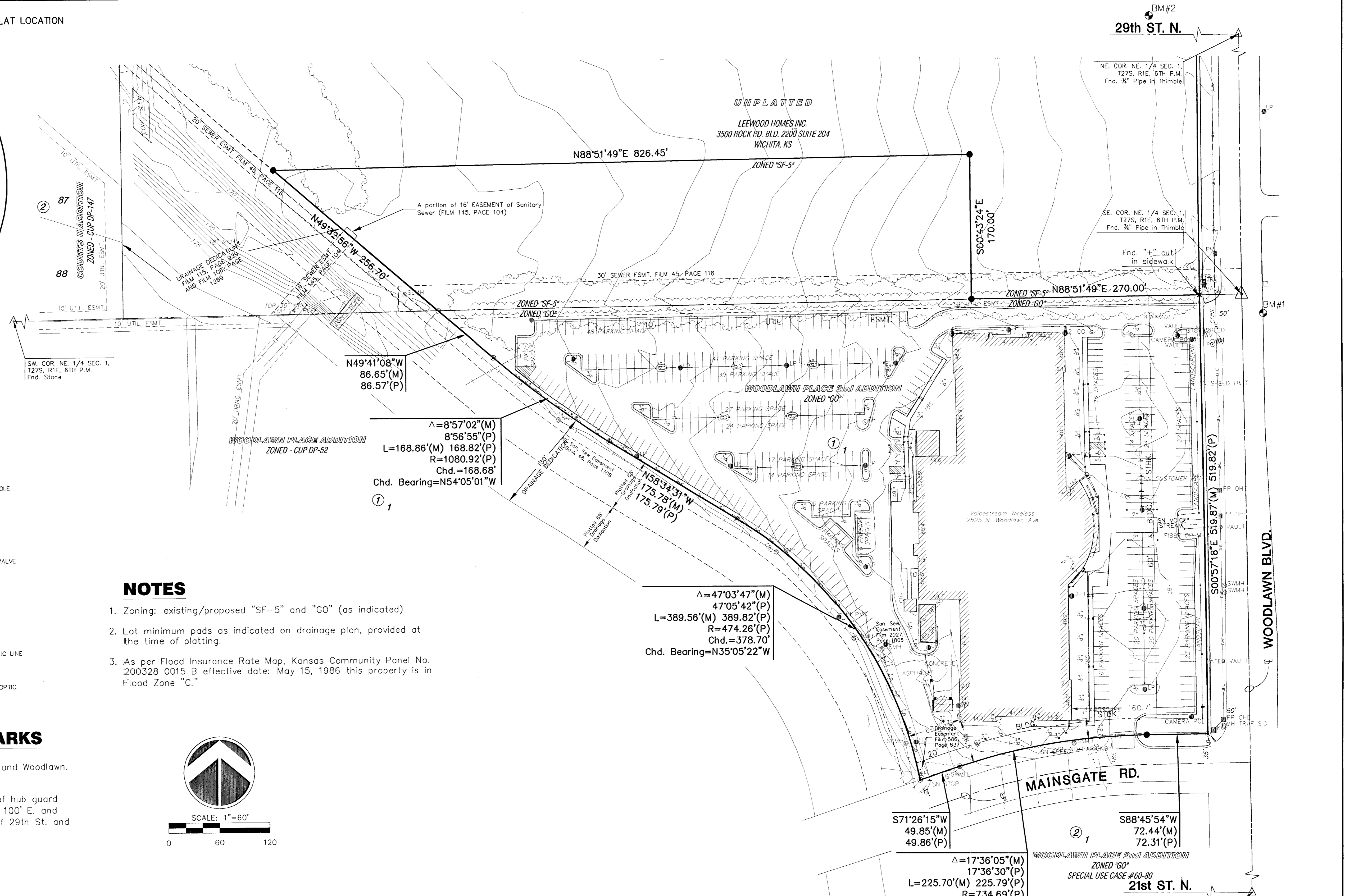


**VICINITY MAP**

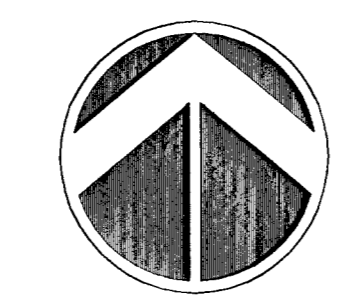


**LEGEND**

- |  |   |
|--|---|
| <ul style="list-style-type: none"> <li>• G.M. - GAS METER</li> <li>- GROUND YARD LIGHT</li> <li>• Y.L.P. - YARD LIGHT ON POLE</li> <li>- ELECTRIC MANHOLE</li> <li>- SIGNAL LIGHT</li> <li>• C.T. - CONIFEROUS TREE &amp; DIAMETER</li> <li>• D.T. - DECIDUOUS TREE &amp; DIAMETER</li> <li>• S.N. - SIGN</li> <li>• BUSH</li> <li>• P.P. - POWER POLE AND GUY ANCHOR</li> <li>• E.B. - ELECTRIC BOX</li> <li>• S.C. - SEWER CLEANOUT</li> <li>- EDGE OF TREES</li> <li>• B.M. - BENCHMARK</li> <li>• S.W.M.H. - STORM WATER MANHOLE</li> <li>• S.S.M.H. - SANITARY SEWER MANHOLE</li> <li>- TELEPHONE MANHOLE</li> <li>• S.C. - SECTION CORNER</li> <li>• 5/8" REBAR/MKEC CLS #39 SET</li> <li>• - PROPERTY CORNER FOUND</li> </ul> | <ul style="list-style-type: none"> <li>• P.O. - POLE</li> <li>- GATE</li> <li>• T.R.A.F. M.H. - TRAFFIC SIGNAL MANHOLE</li> <li>• S.P.K. - SPRINKLER HEAD</li> <li>- WALL</li> <li>• L.P. - LIGHT POLE</li> <li>• F.H. - FIRE HYDRANT</li> <li>• W.V. - WATER VALVE</li> <li>• W.M. - WATER METER</li> <li>• I.C.V. - IRRIGATION CONTROL VALVE</li> <li>• G.I. - GRATE INLET</li> <li>• T.R. - TELEPHONE RISER</li> <li>• I. - INLET</li> <li>- STORM SEWER PIPE</li> <li>- WATER LINE</li> <li>- SANITARY SEWER LINE</li> <li>- GAS LINE</li> <li>- TELEPHONE LINE</li> <li>- UNDERGROUND ELECTRIC LINE</li> <li>- OVERHEAD TELEPHONE</li> <li>- OVERHEAD ELECTRIC</li> <li>- UNDERGROUND FIBER OPTIC</li> </ul> |
|--|---|

**BENCHMARKS**

- BM#1 City disk at 25th St. and Woodlawn. Elev. = 189.11'
- BM#2 City disk NE. corner of hub guard on RCBC on 29th St. 100' E. and 75' N. of centerline of 29th St. and Woodlawn. Elev. = 172.41'



SCALE: 1"=60'

**NOTES**

- Zoning: existing/proposed "SF-5" and "GO" (as indicated)
- Lot minimum pads as indicated on drainage plan, provided at the time of platting.
- As per Flood Insurance Rate Map, Kansas Community Panel No. 200328 0015 B effective date: May 15, 1986 this property is in Flood Zone "C."

# PRELIMINARY PLAT VOICESTREAM ADDITION

OWNERS: LEEWOOD HOMES INC. 3500 N. ROCK RD. BUILDING 2200, SUITE 204 WICHITA, KS 67226 316-636-5290  
 DEVELOPER: Vantage Point Properties Attn: Paul Jackson 8301 E. 21st St. Wichita, KS 67206 316-634-6600

**DATE: APRIL 8th 2002**

