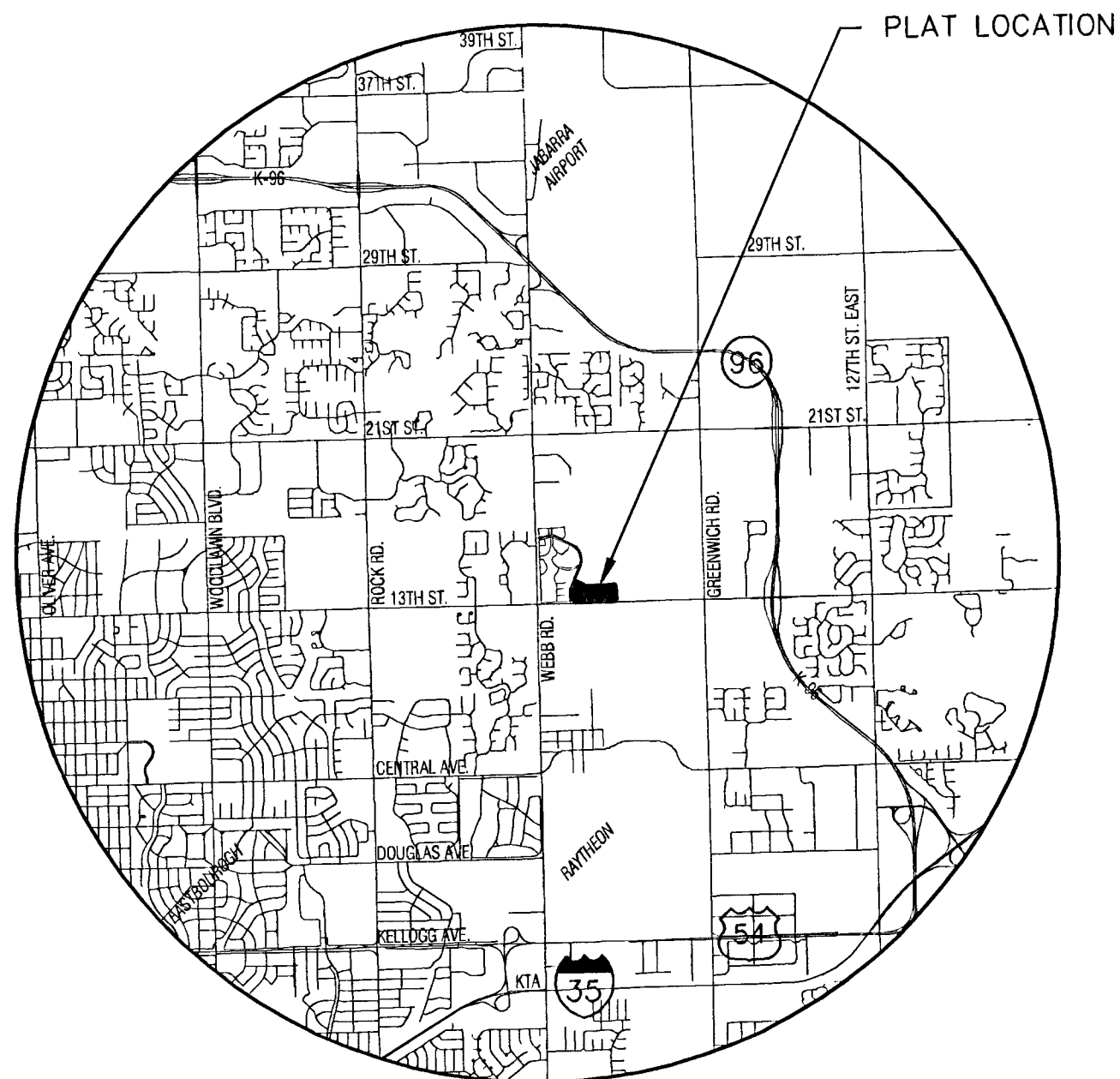


BENCH MARKS

- BM#1 Square cut SE. corner of RCB on N. end of wing wall on RCB under 13th and W. of of S. ¼ cor., Sec. 9, T27S, R2E ELEV. = 189.92'(CITY DATUM) 1377.32 NGVD
- BM#2 Square cut SW. corner signal light pole base NE. corner Webb and 13th ELEV. = 185.945 (CITY DATUM) 1373.045 NGVD



VICINITY MAP

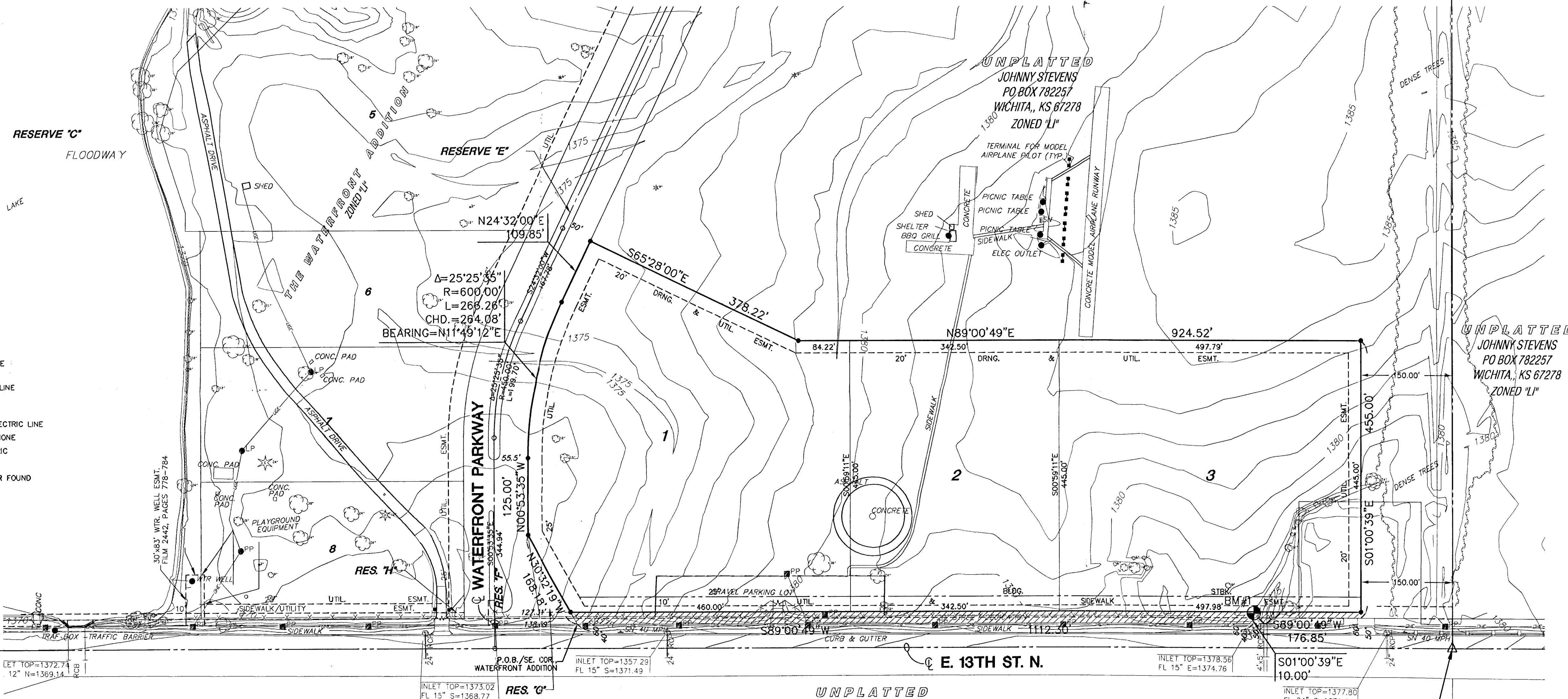
LEGEND

- | | |
|--|---|
| <ul style="list-style-type: none"> ☆ 6IN - CONIFEROUS TREE & DIAMETER ○ 6IN - DECIDUOUS TREE & DIAMETER △ - SIGN ○ - BUSH --- - EDGE OF TREES --- - FENCE ○ - SANITARY SEWER MANHOLE ○ - GAS METER ○ - POLE ○ - HLP - HIGH LINE POLE --- - GATE --- - WALL ○ - LP - LIGHT POLE ○ - FH - FIRE HYDRANT ○ - WV - WATER VALVE ○ - WM - WATER METER ○ - PMA - POWER POLE AND ANCHOR ○ - TR - TELEPHONE RISER □ - INLET | <ul style="list-style-type: none"> --- - STORM SEWER PIPE --- - WATER LINE --- - SANITARY SEWER LINE --- - GAS LINE --- - TELEPHONE LINE --- - UNDERGROUND ELECTRIC LINE --- - OVERHEAD TELEPHONE --- - OVERHEAD ELECTRIC △ - SECTION CORNER ○ - PROPERTY CORNER FOUND ○ - BENCHMARK |
|--|---|

NOTE

1. ZONING: Existing Limited Industrial "LI"
Proposed Limited Industrial "LI"
2. Plat Area = 15.19ac. Pre Street Dedication
= 14.64ac. Post Street Dedication

SW. Cor., SW ¼, Sec. 9,
T27S, R2E, 6th P.M.
Fnd. "X"-CUT



NE. Cor., SW ¼, Sec. 9,
T27S, R2E, 6th P.M.
Fnd. ½" Pipe

UNPLATED
JOHNNY STEVENS
PO BOX 782257
WICHITA, KS 67278
ZONED "LI"

UNPLATED
RAYTHEON AIRCRAFT COMPANY
PO BOX 85
WICHITA, KS 67201
ZONED "LI"

SE. Cor., SW ¼, Sec. 9,
T27S, R2E, 6th P.M.
Fnd. ¾" Rebar W/
Garber id cap

PRELIMINARY PLAT
THE WATERFRONT SECOND ADDITION

OWNER/DEVELOPER: Beech Lake Development L.L.C., 1223 N. Rock Road, Bldg. H200, Wichita, KS 316-636-2100

DATE: NOVEMBER, 18th 2002



11/17/02 05:16:36 PM CST