

DRAINAGE AND GRADING PLAN W. H. H. ADDITION

WICHITA, SEDGWICK COUNTY, KANSAS

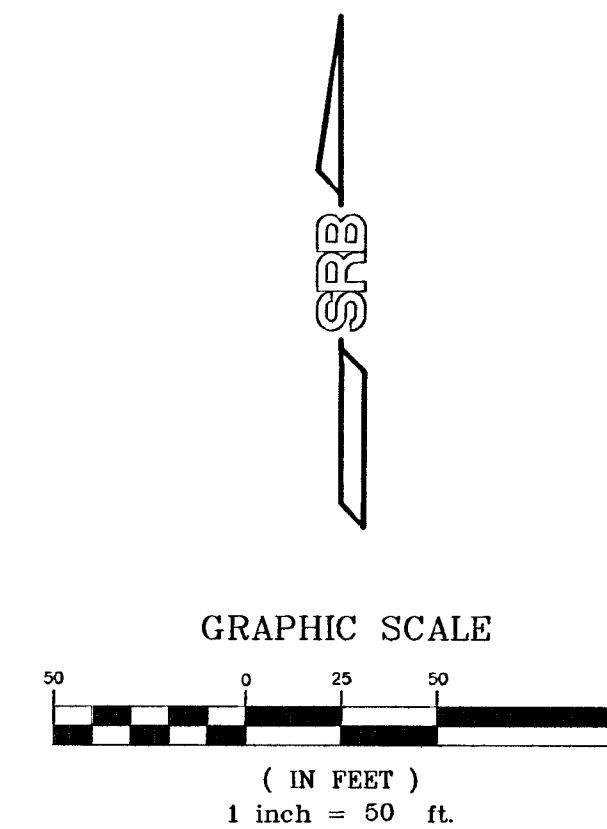
DESCRIPTION:

The west 80 feet of Lot 3, all of Lot 4, and Lot 5 except the east 31.5 feet of the south 56 feet thereof, Block A, Pankratz 2nd Addition, Sedgwick County, Kansas.

OWNER:
Southwest Presbyterian Church
1511 W. 27TH ST. S.
Wichita, Kansas 67217
Ph. 522-6072

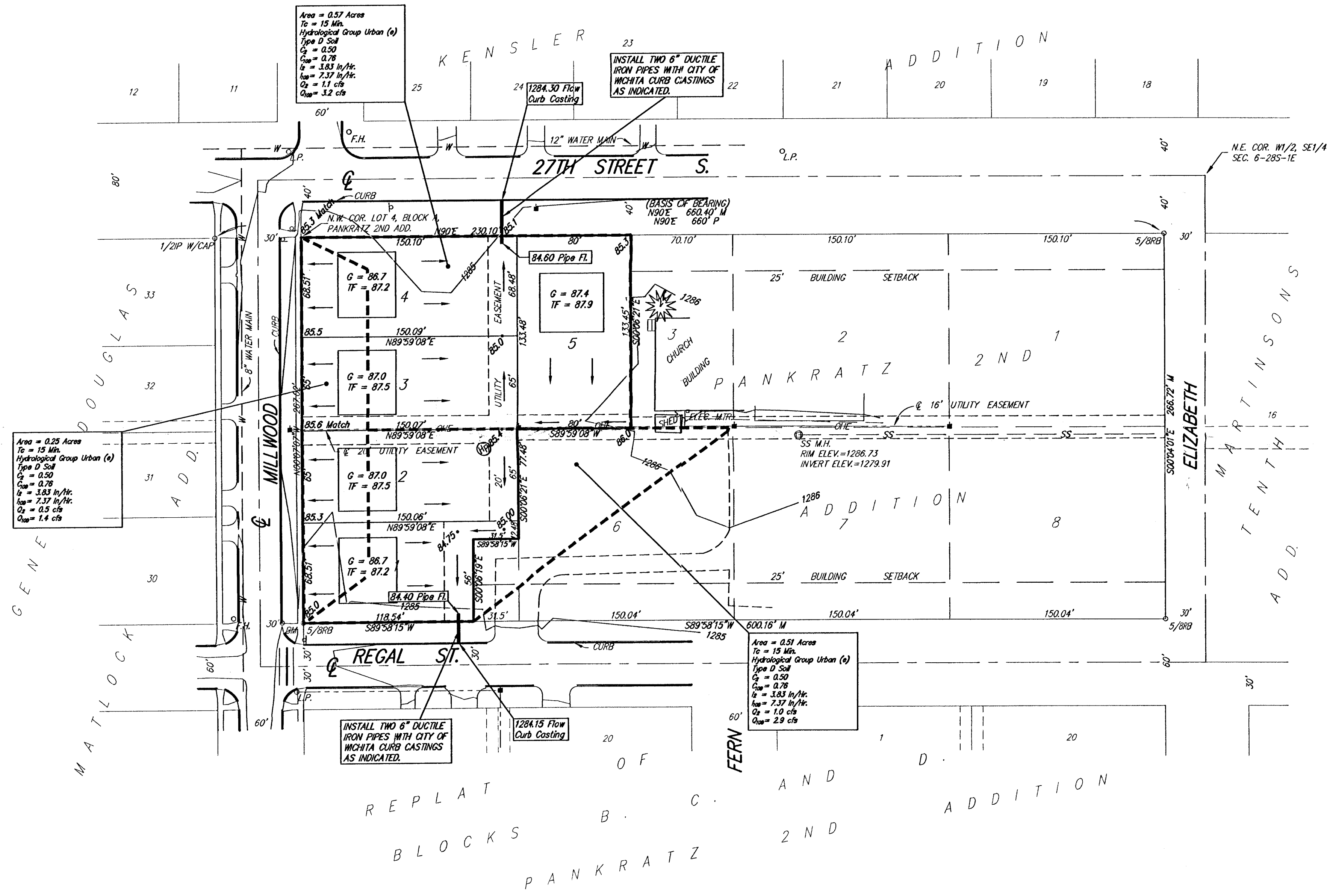
GROSS SIZE:
48,981.13 Sq. Ft.±
1.12 Acres±

MINIMUM LOT SIZE:
8,513.58 Sq. Ft.±
0.20 Acres±



BENCH MARK: CITY OF WICHITA STD. DISC
S.W. COR. TRAFFIC SIGNAL BASE @ N.E. COR.
INTERSECTION 31ST ST. S & SENECA
ELEV.=1283.22 N.G.V.D.

ON SITE B.M.: "D" CUT ON TOP OF CURB
N. CURB RETURN @ N.E. COR. INTERSECTION
OF MILLWOOD & REGAL ST.
ELEV.=1284.73 N.G.V.D.



| | | | | | |
|--|---------|---|--------|--|---------|
| DRAINAGE AND GRADING PLAN W. H. H. ADDITION | | | | | |
| SRB | | 924 NORTH MAIN WICHITA, KANSAS 67203 www.srb1.com | | 315-264-8008 FAX 264-4621 E-mail: srb@srb1.com | |
| SAVOY, RUGGLES & BOHM, P. A. ENGINEERING & SURVEYING | | | | | |
| PROJECT NUMBER | | | | | |
| DESIGN | DRAWN | UTILITY | REVIEW | DATE | REVISED |
| C. Bohm | C. Bohm | | | 02-27-2001 | |
| SHEET | | | | | 1 |
| OF | | | | | 1 |