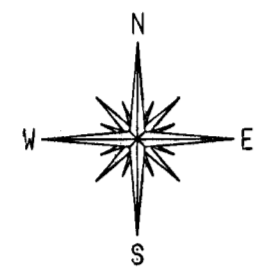


Misc.

VICINITY MAP FOR W. J. R. ADDITION SEDGWICK COUNTY, KANSAS



SCALE: 1" = 50'

LEGEND:

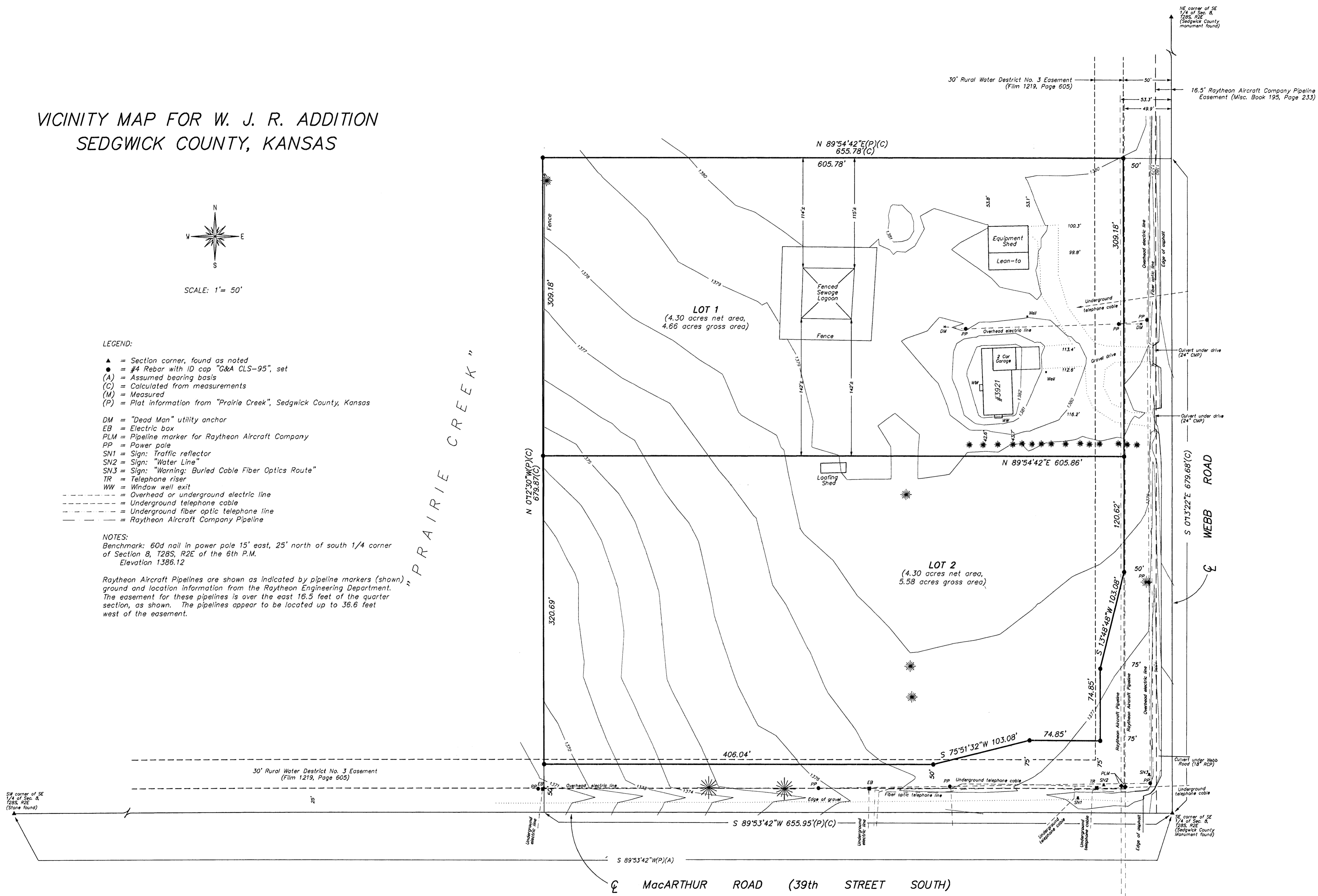
- ▲ = Section corner, found as noted
- = #4 Rebar with ID cap "G&A CLS-95", set
- (A) = Assumed bearing basis
- (C) = Calculated from measurements
- (M) = Measured
- (P) = Plat information from "Prairie Creek", Sedgwick County, Kansas

- DM = "Dead Man" utility anchor
- EB = Electric box
- PLM = Pipeline marker for Raytheon Aircraft Company
- PP = Power pole
- SN1 = Sign: Traffic reflector
- SN2 = Sign: "Water Line"
- SN3 = Sign: "Warning: Buried Cable Fiber Optics Route"
- TR = Telephone riser
- WW = Window well exit
- = Overhead or underground electric line
- = Underground telephone cable
- = Underground fiber optic telephone line
- = Raytheon Aircraft Company Pipeline

NOTES:
 Benchmark: 60d nail in power pole 15' east, 25' north of south 1/4 corner of Section 8, T28S, R2E of the 6th P.M.
 Elevation 1386.12

Raytheon Aircraft Pipelines are shown as indicated by pipeline markers (shown) ground and location information from the Raytheon Engineering Department. The easement for these pipelines is over the east 16.5 feet of the quarter section, as shown. The pipelines appear to be located up to 36.6 feet west of the easement.

" PRAIRIE CREEK "



Griffiths & Associates, Inc.

Land Surveyors

1333 N. Broadway, Ste. A
 Wichita, KS 67214
 (316) 267-2900
 fax (316) 267-4431