



# ONE-STEP FINAL PLAT

## VILLAGE CHARTERS 2ND ADDITION WICHITA, SEDGWICK COUNTY, KANSAS

State of Kansas) SS We the Baughman Company P.A., Surveyors  
Sedgwick County) and state do hereby certify that we have surveyed and  
Sedgwick County) plat and approved by the Metropolitan-Sedgwick County Metropolitan Area  
Metropolitan Area) Planning Commission, Wichita, Kansas.  
Dated this 22nd day of March, 1989.  
Wichita-Sedgwick County Metropolitan Area Planning Commission

State of Kansas) SS We the Baughman Company P.A., Surveyors  
Sedgwick County) and state do hereby certify that we have surveyed and  
Metropolitan Area) Planning Commission, Wichita, Kansas.  
Dated this 22nd day of March, 1989.  
Wichita-Sedgwick County Metropolitan Area Planning Commission

This plat of "VILLAGE CHARTERS 2ND ADDITION", Wichita, Sedgwick County, Kansas has been submitted and approved by the Metropolitan-Sedgwick County Metropolitan Area Planning Commission, Wichita, Kansas.  
Dated this 22nd day of March, 1989.  
Wichita-Sedgwick County Metropolitan Area Planning Commission

This plat approved and all dedications shown hereon accepted by the City Council of the City of Wichita, Kansas, this 22nd day of March, 1989.

Mayor: Bob Knight  
City Clerk: Pat Burnett

Entered on transfer record this 22nd day of March, 1989.

County Clerk: James Allford

State of Kansas) SS This is to certify that this plat has been filed for record in the office of the Register of Deeds, this 22nd day of March, 1989, at \_\_\_\_\_ o'clock \_\_\_\_\_ of \_\_\_\_\_.

Register of Deeds: Bill Meek  
Deputy: Linda Kitzke

State of Kansas) SS We the Baughman Company P.A., Surveyors  
Sedgwick County) and state do hereby certify that we have surveyed and  
Metropolitan Area) Planning Commission, Wichita, Kansas.  
Dated this 22nd day of March, 1989.  
Wichita-Sedgwick County Metropolitan Area Planning Commission

This plat approved and all dedications shown hereon accepted by the City Council of the City of Wichita, Kansas, this 22nd day of March, 1989.

Mayor: Bob Knight  
City Clerk: Pat Burnett

Entered on transfer record this 22nd day of March, 1989.

County Clerk: James Allford

State of Kansas) SS This is to certify that this plat has been filed for record in the office of the Register of Deeds, this 22nd day of March, 1989, at \_\_\_\_\_ o'clock \_\_\_\_\_ of \_\_\_\_\_.

Register of Deeds: Bill Meek  
Deputy: Linda Kitzke

State of Kansas) SS We the Baughman Company P.A., Surveyors  
Sedgwick County) and state do hereby certify that we have surveyed and  
Metropolitan Area) Planning Commission, Wichita, Kansas.  
Dated this 22nd day of March, 1989.  
Wichita-Sedgwick County Metropolitan Area Planning Commission

This plat approved and all dedications shown hereon accepted by the City Council of the City of Wichita, Kansas, this 22nd day of March, 1989.

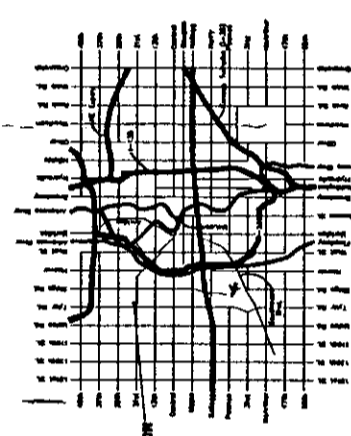
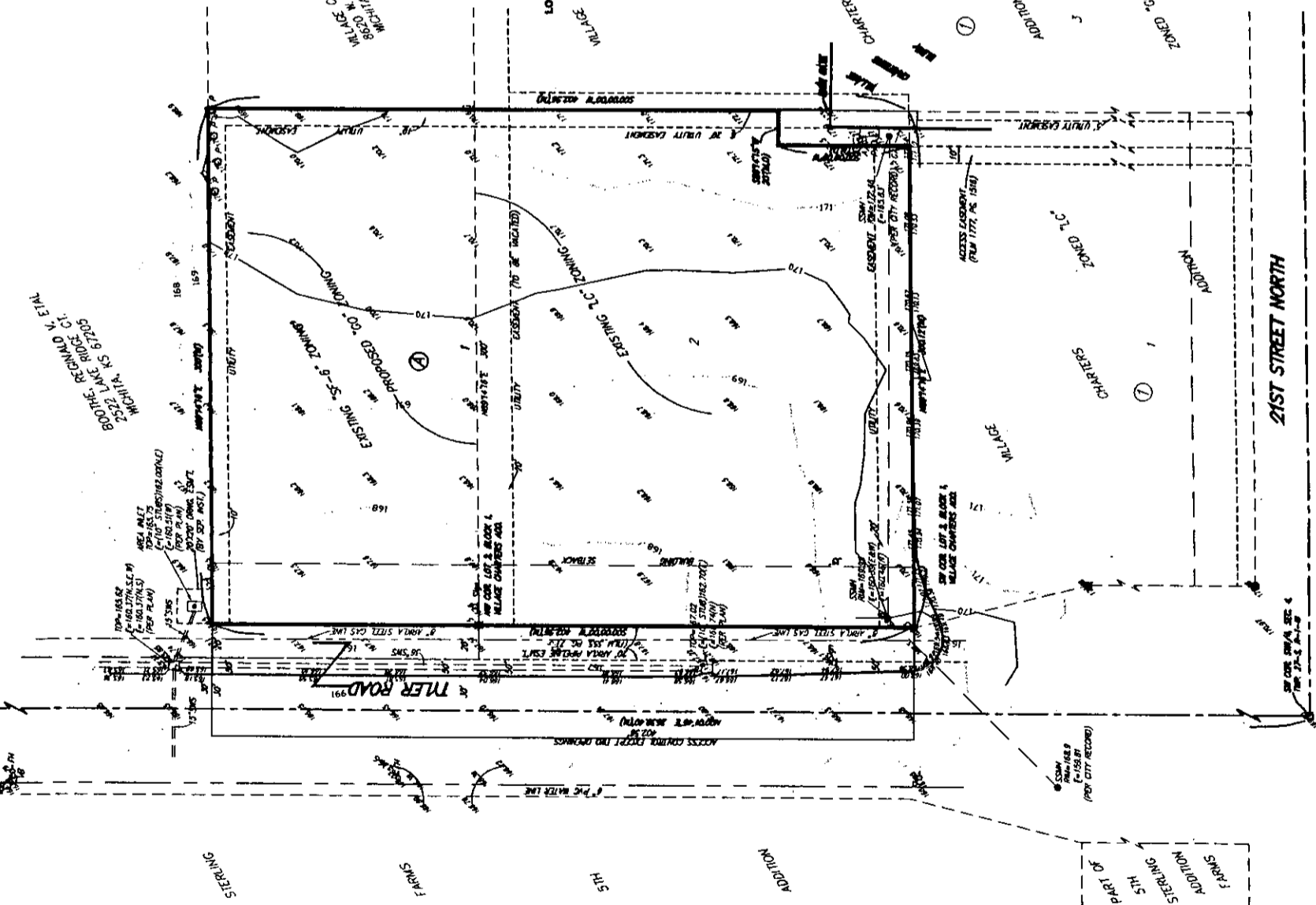
Mayor: Bob Knight  
City Clerk: Pat Burnett

Entered on transfer record this 22nd day of March, 1989.

County Clerk: James Allford

State of Kansas) SS This is to certify that this plat has been filed for record in the office of the Register of Deeds, this 22nd day of March, 1989, at \_\_\_\_\_ o'clock \_\_\_\_\_ of \_\_\_\_\_.

Register of Deeds: Bill Meek  
Deputy: Linda Kitzke



Know all men by these presents that we, the undersigned, have caused the land in the survey certificate to be platted into a Lot, a Block, and a Street, to be known as "VILLAGE CHARTERS 2ND ADDITION", Wichita, Sedgwick County, Kansas. The utility easements are hereby granted as indicated for the construction and maintenance of all public utilities. The streets are hereby dedicated to and for the use of the public.

Willage Charters, Inc.

Richard G. Marnoy, President

State of Kansas) SS The foregoing instrument acknowledged before me, this day of March, 1989, by Richard G. Marnoy, President of Willage Charters, Inc., an agent of the corporation.

My App'l. Exp. \_\_\_\_\_

Notary Public: Melory Public

# ONE-STEP FINAL PLAT

## VILLAGE CHARTERS 2ND ADDITION WICHITA, SEDGWICK COUNTY, KANSAS

State of Kansas) SS  
Sedgwick County) We, the Baughman Company, P.A., Surveyors  
in and for the county and state do hereby certify that we have surveyed and  
platted "VILLAGE CHARTERS 2ND ADDITION", Wichita, Sedgwick County,  
Kansas and that the accompanying plat is a true and correct exhibit of the  
property surveyed, described as a tract of land in the SW 1/4 of Sec. 4,  
Twp. 22-S, R. 1-W of the 6th P.M., Sedgwick County, Kansas, described as  
follows: Commencing at the SW corner of said SW 1/4, thence N00°00'00"E  
along the west line of said SW 1/4, 600 feet to the intersection with the  
north line of Lot 2, Block 1, Village Charters Addition, to Sedgwick County,  
Kansas, as extended west; thence N89°41'16"E along said extended north  
line, 30 feet for a point of beginning; thence continuing N89°41'16"E along  
said extended north line, 120 feet to the NE corner of said Lot 2, thence  
N00°00'00"E along the east line of said Lot 2 as extended north, 152.90  
feet; thence S89°41'16"W parallel with the north line of said Lot 2, 120 feet  
to a point 30 feet northerly distant east of the west line of said SW 1/4;  
thence S00°00'00"E parallel with the west line of said SW 1/4, 152.90 feet  
to the point of beginning, TOGETHER with Lot 2, Block 1, Village Charters  
Addition, to Sedgwick County, Kansas, except the east 20.00 feet of the  
south 75.00 feet thereof.

Existing easements and dedications being vacated by virtue  
of K.S.A. 12-517(d).

Baughman Company, P.A.

Michael G. Conroy \_\_\_\_\_ Surveyor

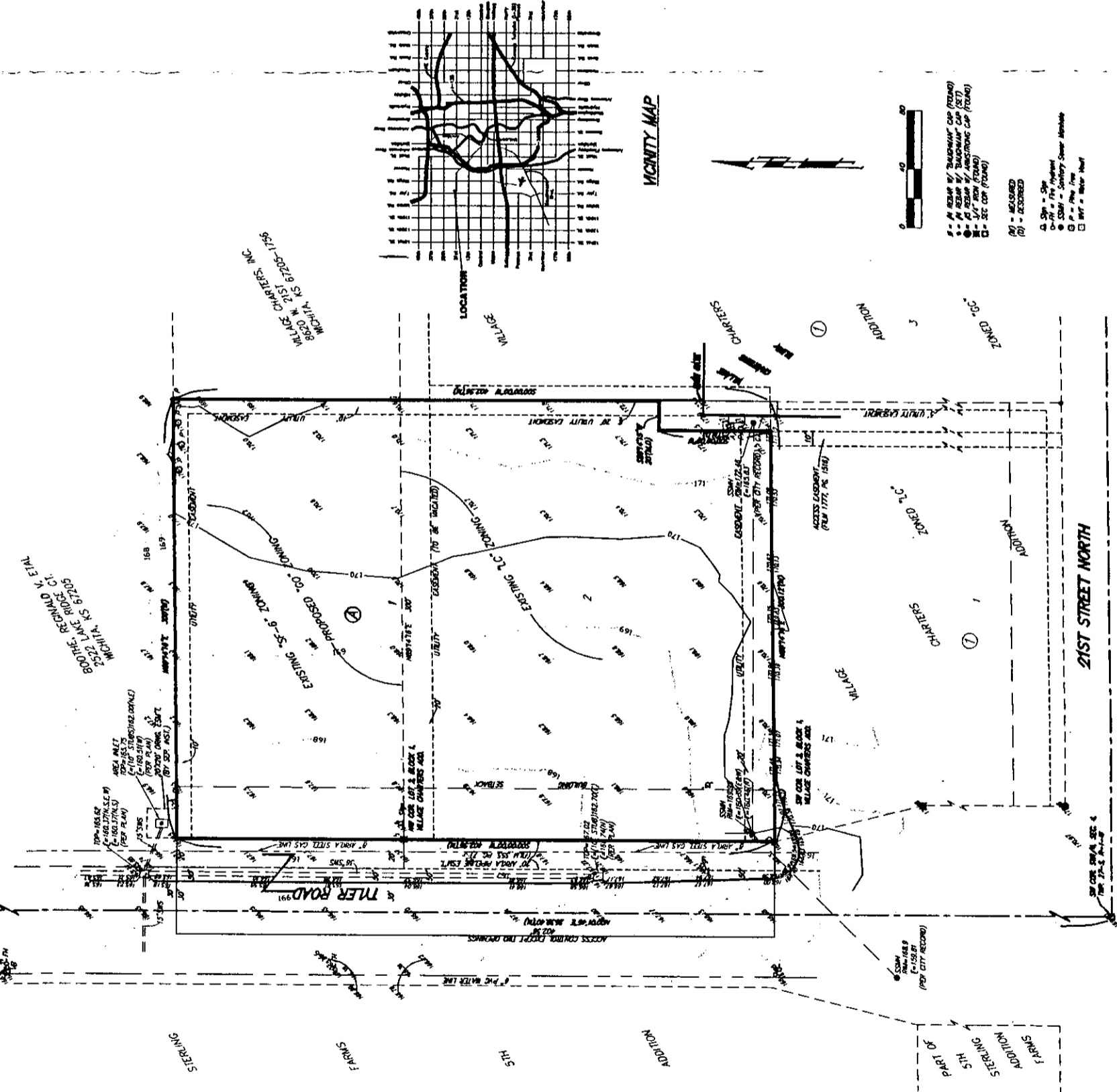
Know all men by these presents that we, the undersigned, have caused the land in the survey certificate to be platted into a Lot, a Block, and a Street, to be known as "VILLAGE CHARTERS 2ND ADDITION", Wichita, Sedgwick County, Kansas. The utility easements are hereby granted as indicated for the construction and maintenance of all public utilities. The streets are hereby dedicated to and for the use of the public.

Village Charters, Inc.

Richard D. Mernoy \_\_\_\_\_ President

State of Kansas) SS  
Sedgwick County) The foregoing instrument acknowledged before  
me, this day of \_\_\_\_\_, 1998, by Richard D. Mernoy, President  
of Village Charters, Inc., on behalf of the corporation.

My App'l. Exp. \_\_\_\_\_ Notary Public



This plat of "VILLAGE CHARTERS 2ND ADDITION", Wichita, Sedgwick County, Kansas has been submitted and approved by the Wichita-Sedgwick County Metropolitan Area Planning Commission, Wichita, Kansas, on \_\_\_\_\_, 1998.

Chairman  
William M. Johnson \_\_\_\_\_

Secretary  
Marv S. Kruel \_\_\_\_\_

This plat approved and all dedications shown hereon accepted by the City Council of the City of Wichita, Kansas, this \_\_\_\_\_ day of \_\_\_\_\_, 1998.

Mayer  
Bob Knight \_\_\_\_\_

City Clerk  
Pat Burnett \_\_\_\_\_

Entered on transfer record this \_\_\_\_\_ day of \_\_\_\_\_, 1998.

County Clerk  
James Alford \_\_\_\_\_

State of Kansas) SS  
Sedgwick County) This is to certify that this plat has been  
filed for record in the office of the Register of Deeds, this \_\_\_\_\_ day  
of \_\_\_\_\_, 1998, at \_\_\_\_\_, and is duly recorded.

Register of Deeds  
Bill Meier \_\_\_\_\_

Deputy  
Linda Kitzke \_\_\_\_\_

