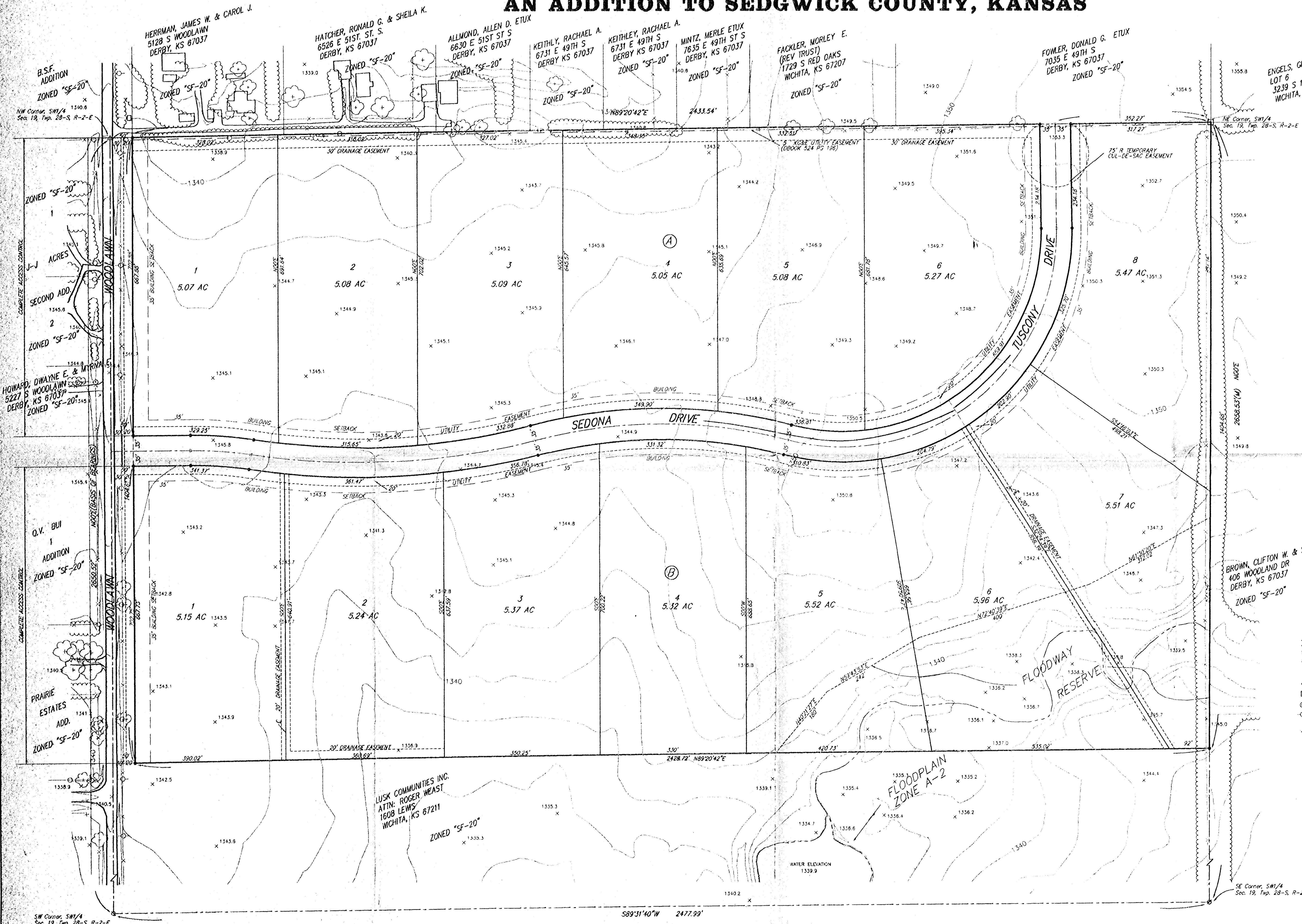


PRELIMINARY PLAT
VIÑA DEL REY ESTATES
 AN ADDITION TO SEDGWICK COUNTY, KANSAS



OWNER:
 ROGER HASHBARGER
 112 N. MERCHANT
 BELLE PLAIN, KANSAS 67013

LEGAL:
 THE NORTH 80 ACRES OF THE SW 1/4 OF SEC. 19,
 TWP. 28-S, R-2-E OF THE 6TH P.M., SEDGWICK
 COUNTY, KANSAS.

BENCHMARK:
 "□" ON S. HUBGUARD OF R.C.B.C. - 65' W.
 OF E. ROCK ROAD & 55TH ST. SO.
 ELEV. = 1362.32 M.S.L.

R.R. SPIKE IN POWER POLE - 40' NE. OF
 SW. CORNER OF SEC. 19, T28S, R2E
 ELEV. = 1328.02 M.S.L.

TOPOGRAPHY BY WESTERN AIR MAPS, INC
 CONTOUR INTERVAL: 2'

- >< = CULVERT
- = #5 REBAR (FOUND)
- ⊙ = #4 REBAR INSIDE 3/4" IRON (FOUND)
- = #4 REBAR W/ "BAUGHMAN" CAP (SET)
- △ = 3/4" IRON IN STONE (FOUND)
- = STONE (FOUND)
- ⊖ = #5 REBAR W/ "ARMSTRONG" CAP (FOUND)
- = UTILITY POLE

